



Papakura Radio Club December 2025 Newsletter

Contents

President Resigns:	2
2026.....	2
HF Power Amplifiers.....	3
2026 NZART Conference and Forums.	4
Long Path... ..	4
Tower work	6
Contest Corral December 2025	8
NZART Contest Calendar	9
Papakura Radio Club Inc.	10

President Resigns:

At the Committee Meeting on Wednesday 17th December, Gavin Denby ZL1NUX advised that he would like to resign as President and member of the Papakura Radio Club. A vote of thanks was passed with acclamation for the effort and work that Gavin has given the Club over the past 8 years.

With the resignation of Gavin, there has been a rearrangement of Officers with Richard ZL1BNQ taking on the role of President and Ian ZL1AOX as Newsletter Editor as well as Secretary.

There has also been a change in the Committee with Mike ZL4MDE resigning for personal reasons.

Rob ZL1RJS/ZL3RS has created a website at <https://zl1rjs.co.nz/> which has information on projects run and supported by the Papakura Radio Club Inc. He also has links to manuals for various radios and other interesting items. Thanks, Rob.

I intend to produce a newsletter each month and is planned to be sent out prior to each monthly meeting. If you have any items you would like to see in the newsletter, please send to me at iana@kcbbs.gen.nz

Ian Ashley ZL1AOX, Secretary.

2026...

What your club has to offer over the coming months...

Over the summer months... January through March... We will be holding our regular Project evenings on the 2nd and 4th Wednesdays of the month... but also, we will be holding some outside events such as Antenna Building (from scratch), setting up a portable station (for SOTA,POTA etc.), direction finding (including a Fox hunt). These activities will take time to setup so please, if there is something else that you would like to see or find out about... just call Ian Ashley on 021 198 1810 or email iana@kcbbs.gen.nz

As for projects... Keith Dix, ZL1BQE is well under way with the Keyer kit so we can look forward to that one very soon and any other requests are also welcome.



We may also be able to visit the Klondyke radio station... keep a watch out for more on this activity... listen to the Sunday nets... 2m on 146.625 Repeater at 0800 and the HF net 3755kHz 80M linked via 146.675 2m at Arataki Reserve or 438.775 at Drury...both links also require a CTCSS tone to be added... 141.3. or better still just come along on a Wednesday evening at 7.30 and see what's going on at your club. Rob's web site gives an indication of what's on and I'll get onto updating the clubs

web site. <https://www.qsl.net/zl1vk/> which has fallen behind somewhat.

AND... remember, anyone who wants to assist with any of these activities shown above or that has an idea for something different, let the club know by emailing Ian Ashley at his email address shown above. Thanks David ZL1DK

HF Power Amplifiers

From... <https://www.hamradiosecrets.com/ham-radio-equipment.html#MODKIT>

Many amateur radio operators consider that using ham radio amplifiers at full legal power (1500 watts DC input maximum in many countries) ... is like shooting fish in a shallow creek at close range with a double-barrelled shotgun!

These *amateurs* like to punch through pileups to be heard by the DX station they would like to log.

This questionable technique works most of the time, of course. But, where's the *sport* in that? Where is the *challenge*?

Admittedly, there **are** "*circumstances*" that justify using full legal power, or at least, higher power than most transceivers put out.

Those circumstances do **not** include casual DXing and most certainly not "local" rag chewing!...

Many serious contest operators will regularly have to use an amateur radio amplifier to "*punch*" through strong atmospheric noise (QRN) or deep fading of radio signals due to unsteady ionospheric conditions (QSB). After all, prestigious awards are often at stake!

As mentioned earlier, it is a *questionable practice* (at best) to force your way into a DX pileup with full legal power.

Good operating practice is to use *as little power as necessary* to maintain solid contact during a QSO....

From my point of view... While using the ZL100C callsign I noticed a post on DXSUMMIT Cluster directed to me as the ZL100C operator from a SWL@.... 'No idea, listen.' Well, the only thing that I could say in reply... first of all... get a licence, you'll find it a lot of fun and secondly if your aerial is insufficient maybe you need more wire in the air, a piece of wet string is not enuf. Below is the Papakura Radio Club Inc.

Amp I use with ZL100C from the Clubrooms... I can in get a 59+10 from A71AT in Qatar... his power and antenna not sure, he is 59+20.



Working into Europe, Long Path, is fun but many operators are using the bare minimum setup of antenna... maybe restricted by local rules etc. but that makes for difficulty in receiving their callsigns and signal reports.

Look at the following YouTube video and see what the bare minimum antenna is that will still work for you. <https://www.youtube.com/shorts/hRz6IMhUANK>

Thanks to David ZL1DK for the above and other items in this months news.

2026 NZART Conference and Forums.

The 2026 NZART Conference and Forums is to be held in the Waipuna Conference Centre, Mt Wellington, Auckland over Kings Birthday weekend Saturday the 30th May through Monday the 1st June.

Plans are well underway; details will be advised to all in the next Break-In publication.

Note... there is going to be a way to make payment where you can pay a % of the bill monthly... that would make it easier for some to attend this 100th Year Centennial Conference.

Long Path...

For those of you who are unaware for this term... long path is the longer way around the world to the station you are working... or trying to work. Short path is the shortest way and where it comes to Spain, England etc... good luck sorting it out.

On Friday the 19th December, I was down at the Papakura Radio clubrooms ready to work with the callsign ZL100C. After watching the news at 6.00pm I turned everything on and setup the keyer with the ... CQ Zulu Lima One Zero Zero Charlie... ZL100Charlie.

Luckily, Keith, ZL1BQE, had set the keyer up to repeat the transmission with an adjustable time delay to allow stations to reply... if they are quick enuf. I set the delay to around 2 seconds... enuf time for stations to start their call at least. Sometimes I am able to capture the complete callsign and

on other occasions I need the number or suffix to be repeated. Sometimes, when the signal is really weak, I may have to work my way through the call a letter or two at a time until I have the correct call in the logbook. Anyway, into the logbook goes the callsign... 59 for everyone... I'm not going to look at the radio for a true report... the 59 report seems to be accepted worldwide and it's good enuf for me.

But let's get back to the topic... long path. I had seen on the DXCluster LZ3CC had shown ZL100C as being on 14.241MHz calling CQ. As I hadn't worked him yet, I called for the LZ3 to call again. That went on for a couple of minutes or so but no luck... he had gone. I later found him 6 up on 14.247 calling CQ. I shuffled back and forth trying him then going back to my frequency... in the end I missed him completely. But I was able to hear him, and I knew that I can be heard in Europe... via all the Pacific, the USA, the Atlantic and most of Europe... This was not the first time for that path to be good to me, and I hope this it will not be the last. Now as I worked more and more stations in Europe, I suddenly heard the call BG5CZD, or at least I heard the BG5 part of the call. I entered it into the logbook, and it showed the country as China and that that would be a new country for me with ZL100C taking my total for 20meters to 119. The 118 was Guatemala that I had worked earlier in the evening. However, the second call to ask for BG5 to reply was met with a great signal and I entered his full call into the log... BG5CZD... we exchanged calls, signal reports and wished each other all the best for Christmas and a Happy New Year and I carried on working or pushing buttons again.

Now that call from China was interesting to me because that's a long, long way around the world and he was such a good signal I decided to follow it up in the morning. After going to the club on Saturday to again drop the beam to sort out the coax feed relief, I sent an email to BG5CZD... it read...

Hi,

My name is David (ZL1DK)... I was operating the Special Event Station, ZL100C call last evening and worked your station. I was working from Papakura, South Auckland, New Zealand with an Icom IC7410 transmitter, into an Ameritron SSD 500W mobile amp into a 4-element tri band yagi at around 15m. On 2 sides of our club station we have salt water, around 20 meters away giving a good grounding for the antenna system. You were a great signal, I wonder what you were using and the power as I was working with the beam heading of 45 degrees out over the Pacific Ocean over the USA and Long Path into Europe. I worked into Korea a month or so earlier the same way... there was no signal from that station directly but another good report Long Path. Interesting...

Thanks for the QSO and all the best for Christmas and my best wishes to you and your family for the coming New Year. 73,

David z1dk

And I received the following reply an hour or two later...

Good morning. I was using a 16-element tri-band Yagi antenna, with 4 elements on 20 metres, employing a FlexRadio 6500 and a tube power amplifier delivering approximately 1500W output. My QTH is Xinjiang, grid NN16tu, which in terms of propagation is more akin to Europe.

While operating in FT8, I received strong Pacific stations like ZL1A via the long path. Upon seeing your spot, I switched over to SSB.

Many thanks for the QSO. Wishing you a pleasant weekend, a Merry Christmas, and all the best for the New Year.

Best 73, BG5CZD Liu.

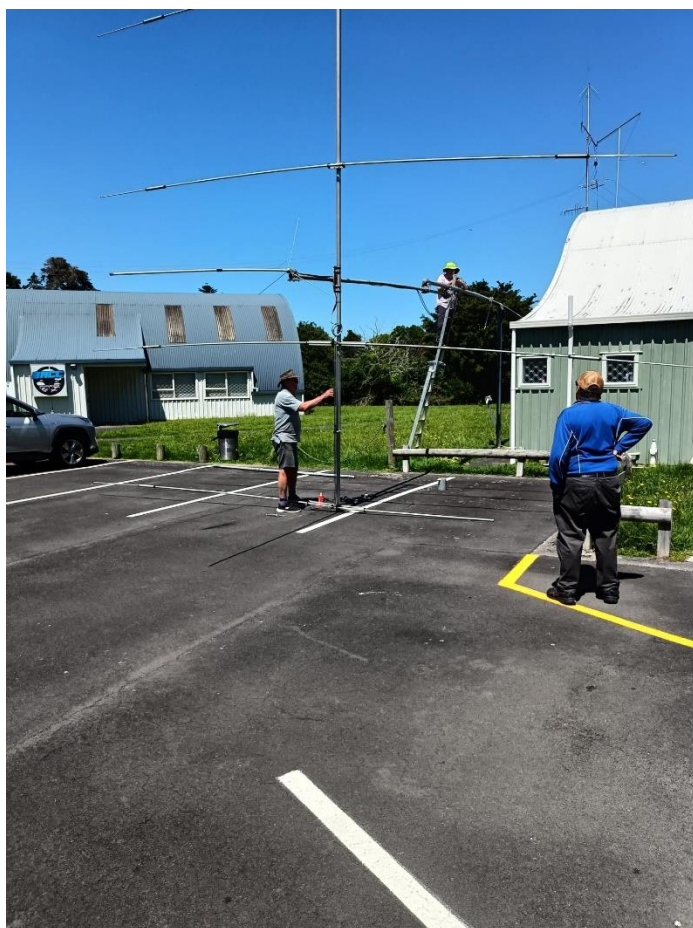
And there you have it... Long Path into and out of China is possible with a little more power, a good radio and a keen ear... not to mention that massive aerial system.

David z1dk

Tower work ... Saturday the 13th December 2025... been done

Saturday was the day we had arranged to lower the tower to sort out the coax relief area around the rotator, so it won't snag on the attachments.

The photos tell the story and the first one shows Richard, ZL1BNQ, John, ZL1OJ and Dave ZL1MR up the ladder. It always pays to have more supervisors than workers... that way things



always take longer.

This second photo shows Dave climbing the ladder to secure the coax with some ties.

The final photo, shown below, shows Dave tying back the coax below the rotator with a couple of ties to ensure they don't break loose. Pics... David ZL1DK



If we each do a Little, it becomes a lot.

New Satellite Tracking Application Released

Bob McGwier, N4HY, has announced the release of a new satellite tracking application entitled Visible Ephemeris.

Visible Ephemeris is a modern, spiritual successor to Quiktrak (1986), re-engineered for the Raspberry Pi 5 and modern silicon. It is capable of propagating 13,000+ satellites in real-time with sub-second updates while maintaining <5% CPU utilization.

Visible Ephemeris is high performance physics based program using Kelso/Villado SGP4, to track satellites (all in the Celestrak TLE). It uses McGwier's implementation of Pedro Escobal AOS/LOS search but rewritten for altitude and not Eccentric Anomaly. The code is designed for and intended for Raspberry Pi and displays graphics components using Web UI.

It features a Hybrid Decoupled Architecture where the UI, Orbital Mechanics, and Network Services run on independent threads, ensuring the interface never freezes—even during heavy calculation loads.

Visible Ephemeris has been released under the MIT license and further details can be found at <https://github.com/n4hy/VisibleEphemerisCPP.git>

[ANS thanks Bob McGwier, N4HY, for the above information]

Thanks to the AMSAT newsletter for the above item.

Contest Corral December 2025

Check for updates and a downloadable PDF version online at www.arrl.org/contest-calendar.

Refer to the contest websites for full rules, scoring information, operating periods or time limits, and log submission information.

Start - Finish Date- Time Date-Time				Bands	Contest Name	Mode	Exchange	Sponsor's Website
2	0100	2	0300	3.5-28	ARS Spartan Sprint	CW	RST, SPC, pwr	ars-qrp.com
4	0000	4	0300	1.8	QRP ARCI Top Band Sprint	CW	RST, SPC, mbr or pwr	qrparci.org
4	0000	5	0300	7	Walk for the Bacon QRP Contest	CW	Max 13 WPM; RST, SPC, name, mbr or pwr	qrptest.com/pigwalk40
4	1800	4	2200	28	NRAU 10m Activity Contest	CW Ph Dig	RS(T), 6-char grid square	nrau.net
4	2000	4	2200	1.8-28,50	SKCC Sprint Europe	CW	RST, SPC, name, mbr or "none"	www.skccgroup.com
5	0100	5	0130	See rules	NCCC FT4 Sprint	Dig	4-char grid square	www.ncccsprint.com
5	0145	5	0215	3.5-28	Weekly RTTY Test	Dig	Name, SPC	radiosport.world/wrt.html
5	2200	7	1600	1.8	ARRL 160-Meter Contest	CW	WVE: RST, ARRL/RAC Section; DX: RST	www.arrl.org/160-meter
5	0230	5	0300	See rules	NCCC Sprint	CW	Serial, name, QTH	ncccsprint.com
6	0000	7	2359	3.5-28	Kalbar Contest	Ph	RS, serial	kalbarcontest.com
6	0600	6	0800	7,14	Wake-Up! QRP Sprint	CW	RST, serial, suffix of previous QSO	qrp.ru/contest/wakeup
6	1200	7	1159	3.5-28	PRO CW Contest	CW	RST, serial, "M" if mbr	proradicontestclub.com
6	1400	7	1359	3.5-14,21	INORC Contest	CW	RST, club, mbr or serial	www.inorc.it
6	1800	7	2359	3.5-28	FT Challenge	Dig	Signal report, 4-char grid square	www.rttycontesting.com
9	1800	9	1859	3.5	DARC CW-Training Contest	CW	RST, DOK/"NM" or serial	www.darc.de
10	0130	10	0330	3.5-14	NAQCC CW Sprint	CW	RST, SPC, mbr or pwr	naqcc.info
12	0100	12	0130	See rules	NCCC FT4 Sprint	Dig	4-char grid square	www.ncccsprint.com
12	0145	12	0215	3.5-28	Weekly RTTY Test	Dig	Name, SPC	radiosport.world/wrt.html
12	0230	12	0300	See rules	NCCC Sprint	CW	Serial, name, QTH	ncccsprint.com
13	0000	14	2359	28	ARRL 10-Meter Contest	CW Ph	RST, state/province or serial	www.arrl.org/10-meter
13	0000	15	2359	1.8-7	PODXS 070 Club Triple Play Low Band Sprint	Dig	RST, SPC	www.podxs070.com
13	0600	14	1800	1.8-28	TRC Digi Contest	Dig	RST, serial, "TRC" if mbr	trcdx.org/rules-trc-digi
13	1200	14	2359	1.8-28,50	SKCC Weekend Sprintathon	CW	RST, SPC, name, mbr or "none"	www.skccgroup.com
13	1300	14	1359	3.5,7	ARI 40/80 Contest	CW Ph Dig	RS(T), 2-letter province code	www.ari.it
13	1600	14	1559	3.5-28	International Naval Contest	CW Ph	RS(T), club and mbr or serial	www.marinefreunde.com
14	2000	14	2300	1.8-28	QRP ARCI Holiday Spirits Sprint	CW	RST, SPC, mbr or pwr	qrparci.org
15	0100	15	0300	1.8-28	4 States QRP Group Second Sunday Sprint	CW Ph	RS(T), SPC, mbr or pwr	www.4sqrp.com
17	0130	17	0330	3.5-14	NAQCC CW Sprint	CW	RST, SPC, mbr or pwr	naqcc.info
18	0000	19	0300	14	Walk for the Bacon QRP Contest	CW	Max 13 WPM; RST, SPC, name, mbr or pwr	qrptest.com/pigwalk20
18	1900	18	2000	3.5-14	NTC QSO Party	CW	Max 25 WPM; RST, name, mbr or "NM"	pi4ntc.nl
19	0100	19	0130	See rules	NCCC FT4 Sprint	Dig	4-char grid square	www.ncccsprint.com
19	0145	19	0215	3.5-28	Weekly RTTY Test	Dig	Name, SPC	radiosport.world/wrt.html
19	0230	19	0300	See rules	NCCC Sprint	CW	Serial, name, QTH	ncccsprint.com
19	1600	19	1700	3.5,7	AGB-Party Contest	CW Ph Dig	Serial, name, QTH	www.ev5agb.com
20	0000	20	2359	1.8-28,50	Feld Hell Sprint	Dig	RST, mbr, SPC, grid	sites.google.com/site/feldhellclub
20	0000	20	2359	3.5-28	OK DX RTTY Contest	Dig	RST, CQ zone	okrtty.crk.cz
20	0000	20	2359	1.8-28,50,144	RAC Winter Contest	CW Ph	RS(T), province/territory, or serial	www.rac.ca
20	1400	21	1359	1.8-28	Croatian DX Contest	CW Ph	RS(T), 9A county or ITU zone	www.hamradio.hr
21	1800	21	2359	3.5-28	ARRL Rookie Roundup, CW	CW	Name, 2-digit year first licensed, SPC	www.arrl.org/rookie-roundup
21	2300	22	0100	1.8-28	Run for the Bacon QRP Contest	CW	RST, SPC, mbr or pwr	qrptest.com
24	0000	24	0200	1.8-28,50	SKCC Sprint	CW	RST, SPC, name, mbr or "none"	www.skccgroup.com
26	0100	26	0130	See rules	NCCC FT4 Sprint	Dig	4-char grid square	www.ncccsprint.com
26	0145	26	0215	3.5-28	Weekly RTTY Test	Dig	Name, SPC	radiosport.world/wrt.html
26	0230	26	0300	See rules	NCCC Sprint	CW	Serial, name, QTH	ncccsprint.com
26	0830	26	1059	3.5,7	DARC Christmas Contest	CW Ph	RS(T), DOK or "NM," serial	www.darc.de
27	1500	28	1500	1.8	Stew Perry Topband Challenge	CW	4-char grid square	www.kkn.net/stew
27	1500	28	1500	3.5-14	Original QRP Contest	CW Ph	RST, serial, pwr category	www.qrpcc.de
28	0000	28	1159	3.5-28	RAEM Contest	CW	See rules	raem.srr.ru
29	1000	29	2159	3.5-28	YOTA Contest	CW Ph	RS(T), age (avg age for multi-ops)	yotacontest.mrasz.org
29	1300	29	1400	1.8-28	QCX Challenge	CW	RST, name, SPC, rig	www.qrp-labs.com
29	1900	29	2000	1.8-28	QCX Challenge	CW	RST, name, SPC, rig	www.qrp-labs.com
30	0300	30	0400	1.8-28	QCX Challenge	CW	RST, name, SPC, rig	www.qrp-labs.com
31	0900	31	2359	3.5,7,28	Bogor Old and New Contest	Ph	RS, age	contest.orari-bogor.org

There are a number of weekly contests not included in the table above. For more info, visit: www.qrpfoxhunt.org, www.ncccsprint.com, and www.cwops.org. All dates and times refer to UTC

Mbr = Membership number. Serial = Sequential number of the contact. SPC = State, Province, DXCC Entity. XE = Mexican state. Listings in blue indicate contests sponsored by ARRL or NCJ. The latest time to make a valid contest QSO is the minute listed in the "Finish Time" column. *Data for Contest Corral is maintained on the WA7BNM Contest Calendar at www.contestcalendar.com and is extracted for publication in QST 2 months prior to the month of the contest. ARRL gratefully acknowledges the support of Bruce Horn, WA7BNM, in providing this service...*

December 2025

NZART Contest Calendar

January, 2026

- 1st [NZART Portable Activity Day](#)
- Lots happening on the 1ST of January... see Infoline on the NZART Website... click on News and then Infoline for more details...
- 26th [WIA Australia Day Contest](#)

February, 2026

- 14th and 15th [DX \(VHF\) Weekend Contest](#)
- Sat 28th Feb and Sun 1st March [NZART Jock White Memorial Field Day](#)

March, 2026

- 7th/8th [Commonwealth Contest](#)

April, 2026

May, 2026

- Each Tuesday in April –[Autumn Sprints](#)
- 11th and 12th [Low Band \(VHF\) Contest](#)
- 2nd [WIA Harry Angel Memorial 80m Sprint](#)
- 16th and 17th [NZART Sangster Shield](#)

June, 2026

- 6th and 7th [WIA VK Shires Contest](#)
- 14th [Straight Key Night – Winter](#)

Operators wanted ... ZL100C ... special event call sign for NZART Centennial Year.

If you are an NZART Member and would like to use this special event callsign, ZL100C, contact David Karrasch, zl1dk@nzart.org.nz.

David will need notification at least 24 hours prior to use, so details can be recorded in the register. You will receive a reply within 24 hours of confirmation, subject to other operator's commitments.

CW operators desperately required. You will need to advise the date, times on and off, band and modes required.

You will also need to supply regularly, a computer generated, adif file of your log so the details can be added to QRZ.com and later, LoTW, on a regular basis.

Any queries contact David zl1dk@nzart.org.nz or phone him... 021 560 180.

Papakura Radio Club Inc.

Branch 65 NZART Club Directory
Wellington Park, 1 Great South Road.
Westpac 03-0399-0019896-00

Club website: <http://www.qsl.net/zl1vk> Club email: zl1vk.club@gmail.com

Acting President	ZL1BNQ	Richard Gamble	021 729 270
Secretary	ZL1AOX	Ian Ashley	021 198 1810
Treasurer	ZL1MR	David Wilkins	021 185 7903
Committee	ZL1DK	David Karrasch	021 560 180
	ZL1IRC	Ian Clifford	021 082 48400
	ZL1RJS	Rob Stokes	021 307 005
	ZL1RIC	Ricky Hodge	027 533 8155
	ZL1KIM	Kimi Nooroa	021 024 66004
	ZL3TI	Tristan Ilich	027 889 3309

AREC Section Leader	ZL1BNQ	Richard Gamble	021 729 270
CD Liaison	ZL1AOX	Ian Ashley	021 198 1810
Newsletter Editor	ZL1AOX	021 198 1810	
Hall Custodian	ZL1AOX	Ian Ashley	021 198 1810
Newsletter. Contact:	Ian Ashley	iana@kcbbs.gen.nz	

Our newsletter is published monthly and normally distributed just before the club meeting.
Please forward articles etc to the editor Wednesday 1 week before the general meeting.
Please notify any change of address including E-Mail Address to the secretary.

Meetings

General Meetings are held at the Clubrooms on the 1st Wednesday of each month, starting at 7.30 pm. Look at your calendar and mark these nights. The speaker follows the General Meeting.

Activity Nights are held on the 2nd Wednesday starting at 7.30 pm.

Committee Meetings are held on the 3rd Wednesday of each month at 7.30 pm unless advised.

Project Evenings are on the 4th Wednesday of each month.

AREC Meetings are on the 5th Wednesday night, also starting at 7.30 pm

AGM: Held in November

Subscription: Full membership and newsletter \$30.00 Family Membership and newsletter \$45.00

Bank Account number: 03-0399-0019896-00

Working Bees: As required.

Branch 65 21 Award: For contacts with ZL1VK (5 Points) and 8 Papakura Radio Club Members (2 Points each). Total 21 Points. Cost \$5-00. Certified list and \$5-00 to Secretary, Papakura Radio Club. Address above.

ZL1VK Club Nets

146.625 MHz Sunday at 8.00 am. Controller ZL1RJS, Rob Stokes and any others available. If the repeater is not available, listen 146.475MHz FM simplex.

3.755 MHz LSB, Sunday at 9.00 am. Controller Richard.ZL1BNQ
(Linked to 146.675 & 438.775 FM Tone 141.3Hz)