



# The Official Newsletter of the **PAPAKURA RADIO CLUB INC.**

*July 2020*



*It may be cold, but at least we get to play outside*



## CONTENTS ...

<b>CONTENTS</b>	<b>2</b>
<b>MINUTES</b>	<b>3</b>
<b>CLUB ACTIVITY</b>	<b>5</b>
<b>UPCOMING ACTIVITIES</b>	<b>5</b>
<b>DXPEDITIONS</b>	<b>5</b>
<b>CONTESTS</b>	<b>6</b>
<b>RAMBLINGS FROM THE EDITOR'S DESK</b>	<b>7</b>
<b>NERDY NEWS</b>	<b>10</b>
<b>A WALK IN THE PARK – ZL1MR</b>	<b>15</b>
<b>HEARD ABOUT THE SCENES</b>	<b>12</b>
<b>NETS LIST</b> (REACH OUT AND TOUCH SOMEONE)	<b>14</b>
<b>CLUB CONTACT INFORMATION</b>	<b>15</b>

### This Month's Meetings:

With the new normal now the normal, we are back to normal activities at the clubrooms, This means, First Wednesday General meeting, and Mike ZL4MDE will be showing and telling us some of his satellite exploits, and having seen a sneak peak, It's bound to be a good talk.

Week 2 and 4 will be project nights and week 3 committee, There is a week 5 this month , so AREC members listen out for Richards news as to what you have week 5

But we do need some new project ideas, So Ideas please, but to start with I have a special challenge for next month general meeting

Details Wednesday 1 July

**THESE WILL BE MADE AVAILABLE AT THE CLUBROOMS ON THE NIGHT**

**APOLOGIES**



**SORT OF ... MAYBE**



## CLUB ACTIVITY:

- Project nights and other general activities at the clubrooms have now returned to normal
- David is continuing the Morse Classes, and we may be running some new ham classes, as interest in the hobby is quite high right now.

## UPCOMING PROJECTS:

### MORSE TRAINING EACH NIGHT EXCEPT WEDNESDAY 7:30 – DAVID ZL1DK

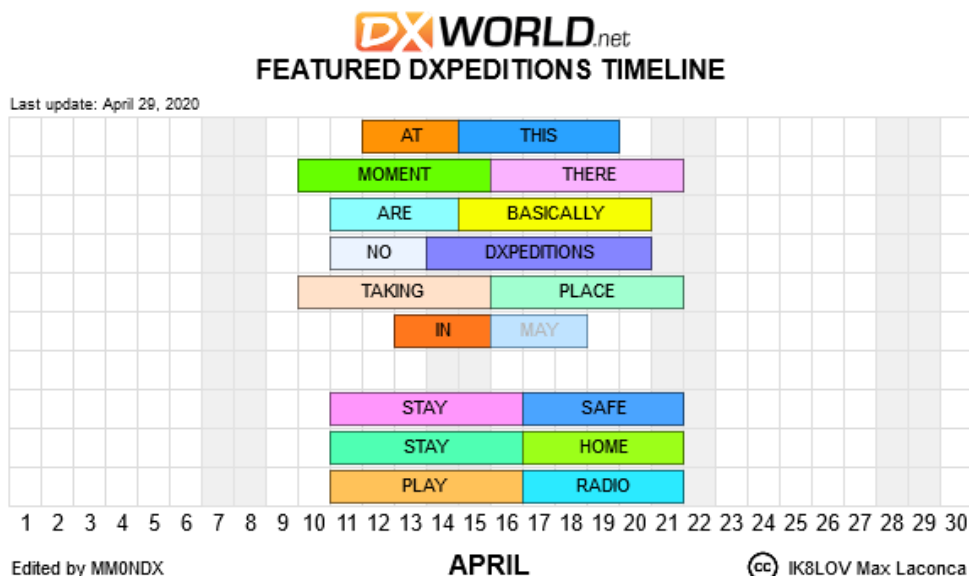
Each night at 19:30 Local, David will be transmitting Morse (audio – LSB) on the Club HF frequency of 3.755 (80 Metres), Following the transmission the message as sent will be read out, and you can self-mark.

The teaching Tool is the Teach4 system and can be found on the NZART website at <https://www.nzart.org.nz/learn/morse-code/> The recommended speed setting is 6 words per minute and 16 word Farnsworth setting (this will change later once we have mastered the alphabet.) This is a great chance to either learn a new skill, or brush up an old one

## UPCOMING ACTIVITIES:

### FACE TO FACE ON HOLD FOR DURATION OF LOCKDOWN

## DX CALENDAR JUNE 2020



Or check them out at DX News.com

## **ANNOUNCED DX**

### **OC-037 New Zealand Sub Antarctic Islands**

The Perseverance DXGroup (PDXG) has some unfinished business. Several members participated on the 2012 ZL9 activation that was cut short by weather. After their successful VP8PJ South Orkney Islands 2020 DXpedition, PDXG is pleased to announce their intention to activate the New Zealand Sub-Antarctic Islands (ZL9), ClubLog #24 most wanted, in the 2021-2022 time-frame. The plan includes 160-10m operation, CW/SSB/RTTY/FT8, with emphasis on 160, 80, 60, 40 and, propagation dependent, 12 and 10meters. The landing permit process is pending and discussions with transportation partners have begun. However, the Covid-19 lockdown has caused significant delays and uncertainty.

### **OC-139 Kangaroo Island**

Grant VK5GR and Andrew VK5AKH mention: that the VK5KI Expedition to Kangaroo Island (IOTA OC-139) has been rescheduled, although it has also been scaled down. It will not be coinciding with the IOTA contest for 2020 and instead will be held during the South Australian school holidays between July 13-18. It is also being converted into a holiday-style expedition. Operation from 80 to 10 meter and perhaps 160 metres. <https://vk5gr-iota.net>

### **Antarctica base stations: Syowa Station**

The 61<sup>st</sup> Japanese Antarctic Research Expedition's over wintering team at the Syowa Station on East Ongul Island (AN-015), Antarctica includes Taka, JA1AGS and Hiro, JH7JCX. In their spare time they are QRV from the 8J1RL club station, with activity on 40, 30, 20, 17 and 15 metres mainly FT8. They will be there until January 2021. QSL via the bureau to 8J1RL, or direct to JG2MLI.

### **3Y, BOUVET**

The Rebels will try to activate Bouvet somewhere December 2020. More to follow



# UPCOMING CONTESTS – JUNE 2020

Date-Time	Date-Time	Bands	Contest Name	Mode	Exchange	Sponsor's Website
1 0000	1 2359	1.8-144	RAC Canada Day Contest	CW Ph	RS(T), VE province/territory or serial	<a href="http://rac.ca/our-programs">rac.ca/our-programs</a>
2 1700	2 2100	28	NRAU 10-Meter Activity Contest	CW Ph Dig	RS(T), 6-char grid square	<a href="http://nrau.net/activity-contests">nrau.net/activity-contests</a>
2 1900	2 2100	1.8-50	SKCC Sprint Europe	CW	RST, SPC, name, mbr or power	<a href="http://www.skccgroup.com">www.skccgroup.com</a>
4 0000	4 0400	3.5-28	FISTS Summer Slow Speed Sprint	CW	RST, SPC, name, mbr or power	<a href="http://fistsna.org">fistsna.org</a>
4 0900	5 0859	3.5	YBDCX 80-Meter Contest	Ph	RS, serial	<a href="http://80m.ybdxcontest.com">80m.ybdxcontest.com</a>
4 1100	5 1059	3.5-28	DL-DX RTTY Contest	Dig	RST, serial	<a href="http://www.drcg.de/dldxrtty">www.drcg.de/dldxrtty</a>
4 1400	5 1400	1.8-28	Marconi Memorial HF Contest	CW	RST, serial	<a href="http://arifano.it/contest_marconi.html">arifano.it/contest_marconi.html</a>
4 1500	5 1500	3.5-14	Original QRP Contest	CW	RST, serial, power category	<a href="http://www.qrpcc.de/contestrules">www.qrpcc.de/contestrules</a>
4 2000	5 2000	7	PODXS 070 Club 40-Meter Firecracker Sprint	Dig	RST, SPC	<a href="http://www.podxs070.com">www.podxs070.com</a>
6 0100	6 0300	3.5-28	ARS Spartan Sprint	CW	RST, SPC, power	<a href="http://arsqrp.blogspot.com">arsqrp.blogspot.com</a>
6 1900	6 2030	3.5	RSGB 80-Meter Club Championship, CW	CW	RST, serial	<a href="http://www.rsgbcc.org/hf">www.rsgbcc.org/hf</a>
11 0000	11 0400	3.5-28	FISTS Summer Unlimited Sprint	CW	RST, SPC, name, mbr or power	<a href="http://www.fistsna.org">www.fistsna.org</a>
11 1200	12 1200	1.8-28	IARU HF World Championship	CW Ph	HQ stations: RS(T), IARU Society Others: RS(T), ITU zone	<a href="http://arri.org/iaru-hf-world-championship">arri.org/iaru-hf-world-championship</a>
11 1200	12 2359	1.8-50	SKCC Weekend Sprintathon	CW	RST, SPC, name, mbr or "none"	<a href="http://www.skccgroup.com">www.skccgroup.com</a>
12 2000	12 2300	1.8-28	QRP ARCI Summer Homebrew Sprint	CW	RST, SPC, mbr or power	<a href="http://qrparci.org">qrparci.org</a>
13 0000	13 0200	1.8-28	4 States QRP Group Second Sunday Sprint	CW Ph	RS(T), SPC, mbr or power	<a href="http://www.4sqrp.com">www.4sqrp.com</a>
15 1900	15 2030	3.5	RSGB 80-Meter Club Championship, SSB	Ph	RS, serial	<a href="http://www.rsgbcc.org/hf">www.rsgbcc.org/hf</a>
16 0030	16 0230	3.5-14	NAQCC CW Sprint	CW	RST, SPC, mbr or power	<a href="http://naqcc.info">naqcc.info</a>
18 0700	18 1459	7-28	Russian Radio Team Championship	CW Ph	RS(T), 3-char code or ITU zone	<a href="http://srr.ru/championat-rossii-poradiosvyazi-na-kv-rrtc">srr.ru/championat-rossii-poradiosvyazi-na-kv-rrtc</a>
18 0800	18 1400	1.8-7	Trans-Tasman Low-Bands Challenge	CW Ph Dig	RS(T), serial	<a href="http://wia.org.au/members/contests">wia.org.au/members/contests</a>
18 1200	18 1359	1.8-50	Feld Hell Sprint	Dig	RST, mbr, SPC, grid	<a href="http://sites.google.com/site/feldhellclub">sites.google.com/site/feldhellclub</a>
18 1800	19 0559	3.5-28	North American QSO Party, RTTY	Dig	Name, state/DC/province/country	<a href="http://www.ncjweb.com/naqp">www.ncjweb.com/naqp</a>
18 1800	19 2100	50, 144	CQ Worldwide VHF Contest	CW Ph Dig	4-char grid square	<a href="http://www.cqww-vhf.com">www.cqww-vhf.com</a>
19 0900	19 1600	3.5-14	RSGB Low Power Contest	CW	RST, serial, power	<a href="http://www.rsgbcc.org/hf">www.rsgbcc.org/hf</a>
19 1900	19 2359	1.8-28	Run for the Bacon QRP Contest	CW	RST, SPC, mbr or power	<a href="http://qrptest.com/pigrun">qrptest.com/pigrun</a>
19 2000	19 2159	14	CQC Great Colorado Gold Rush	CW	RST, SPC	<a href="http://www.coloradoqrclub.org">www.coloradoqrclub.org</a>
22 0000	22 0200	1.8-28	SKCC Sprint	CW	RST, SPC, name, mbr or power	<a href="http://www.skccgroup.com">www.skccgroup.com</a>
23 1900	23 2030	3.5	RSGB 80-Meter Club Championship, Data	Dig	RST, serial	<a href="http://www.rsgbcc.org/hf">www.rsgbcc.org/hf</a>
25 1200	26 1200	3.5-28	RSGB IOTA Contest	CW Ph	RS(T), serial, IOTA number (if applicable)	<a href="http://www.rsgbcc.org/hf">www.rsgbcc.org/hf</a>
26 1700	26 2100	7-28	ARS Flight of the Bumblebees	CW	RST, SPC, power or bumblebee number	<a href="http://www.arsqrp.blogspot.com">www.arsqrp.blogspot.com</a>
27 1300	27 1400	1.8-28	QCX Challenge	CW	RST, name, SPC, rig	<a href="http://www.qrp-labs.com/party.html">www.qrp-labs.com/party.html</a>
27 1900	27 2000	1.8-28	QCX Challenge	CW	RST, name, SPC, rig	<a href="http://www.qrp-labs.com/party.html">www.qrp-labs.com/party.html</a>
27 1900	27 2030	3.5	RSGB FT4 Contest Series	Dig	4-char grid square	<a href="http://www.rsgbcc.org/hf">www.rsgbcc.org/hf</a>
28 0300	28 0400	1.8-28	QCX Challenge	CW	RST, name, SPC, rig	<a href="http://www.qrp-labs.com/party.html">www.qrp-labs.com/party.html</a>

All dates and Times are in UTC and are not adjusted for local time

Mbr = Membership number. Serial = Sequential number of the contact. SPC = State, Province, DXCC Entity. XE = Mexican state.

Listings in blue indicate contests sponsored by ARRL or NCJ. The latest time to make a valid contest QSO is the minute listed in the "Finish Time" column. Data for Contest Corral is maintained on the WA7BNM Contest Calendar at

[www.contestcalendar.com](http://www.contestcalendar.com)

Check for updates and a downloadable PDF version online at [www.arrl.org/contests](http://www.arrl.org/contests).



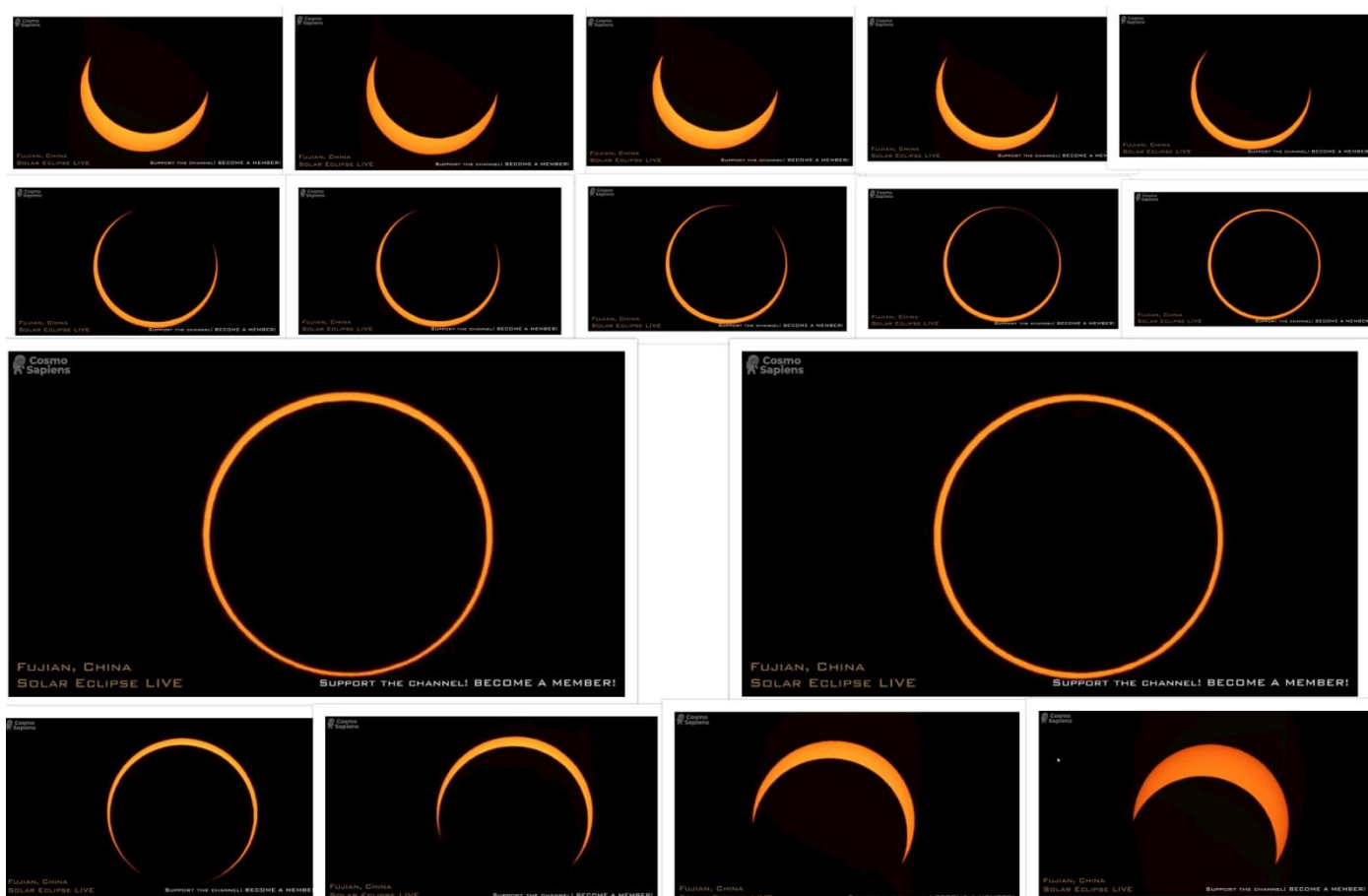
## RAMBLINGS FROM THE EDITORS DESK

Firstly let me apologise for the lateness of the newsletter, But between a busy work month, and an upset stomach, things went a little off track

The month of June has now departed, and the winter has arrived as we turn to the July second half of the year, and the slow climb towards a return to summer. It also seems like all the flu and winter ailments we avoided in the lockdown are determined to strike with vengeance to make up for lost time, Yep, It's the winter and time to pull out the valve amplifier, Not because you need the power, But because it will also heat the shack.

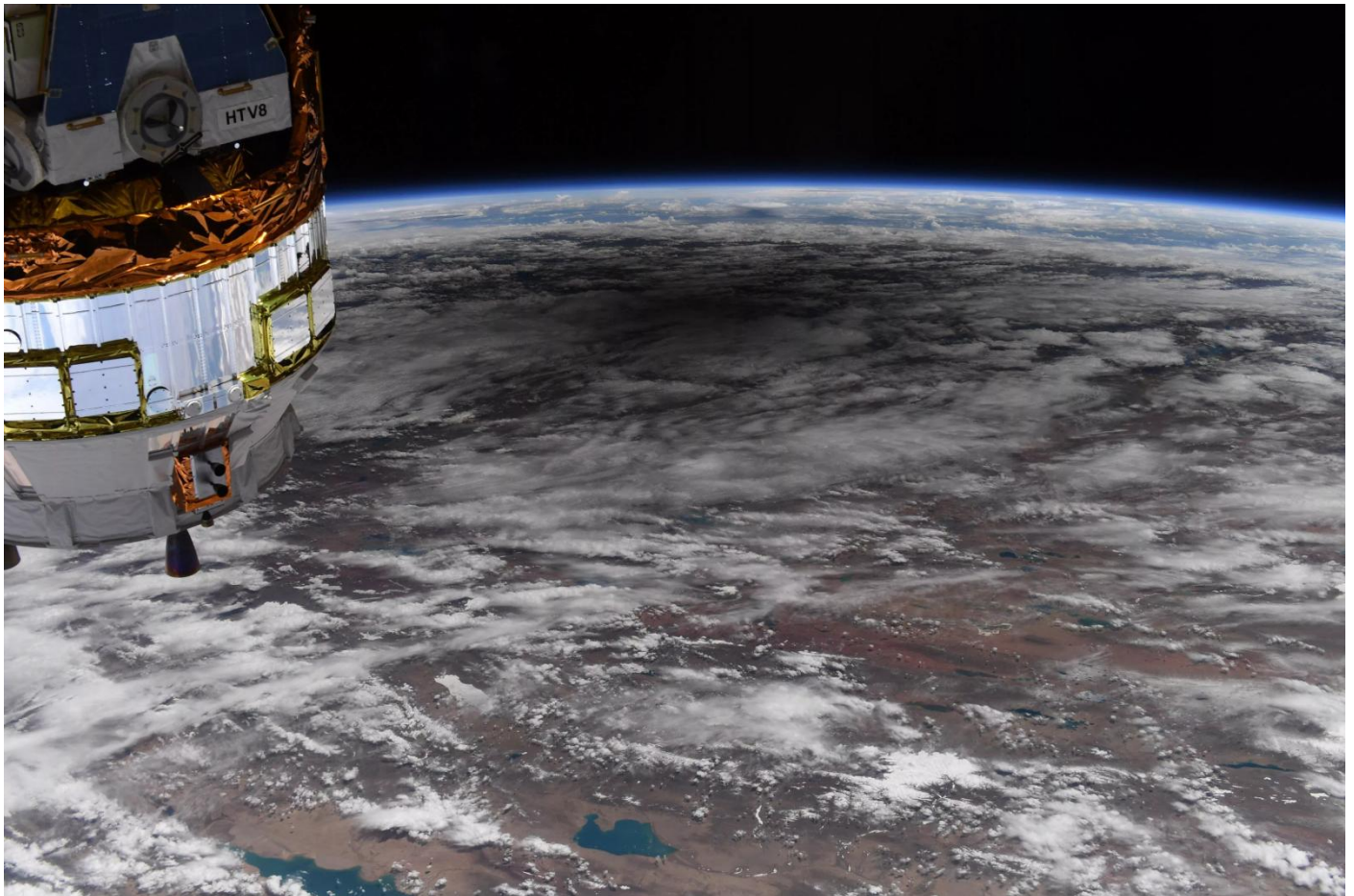
The rain has been a welcome relief for the dam levels, but even with recent falls, the water shortage in Auckland looks to be a long term problem, Low rain and more housing seems to cause us to use more than we catch. Who knew?

On an equally dull note, the upper atmosphere put on a very unique show, the Annular eclipse, also known as a ring of fire, the annular eclipse occurs when the moon is at its furthest distance from the earth, so that the sun is not fully obscured, instead if you are in the right place, you get to see about 85% of the sun obscured, and just a ring is left behind. Sadly New Zealand was not the right place, but thanks to the internet ready cameras of "Cosmo Sapiens" I was able to watch the event in real time across India and then China, where we manage to capture some incredible shots



The collage above shows the different stages of the eclipse with the actual ring lasting only about 40 seconds, but the show was totally worth every minute.

If that view was awesome, imagine how the ISS astronaut Chris Cassidy felt as he watched it from space.



“Super cool view of the Annular Solar Eclipse which passed by our starboard side as we flew over China this morning. A pretty neat way to wake up on Father's Day morning! Hoping all of the dads in the world have a wonderful day!”

Awesome too that he also used it to give dad's a shout out, Thanks for sharing Chris, not that I would feel comfortable with those heights personally.

We have one more solar eclipse to look forward to this year on Dec. 14 for parts of South America, so maybe NZ might get a small view, but I think the streaming services may get another work out.

Of course the Sun has to get a mention, but the mention is, well ... we saw a couple of Cycle 25 solar flares, then ... Silent again! This new cycle is definitely having a hard time getting started, and that means the solar flux remains low, so the propagation is hard work, especially during the daytime, but 80 metres has had some interesting and on occasion very strong grey line and early night contacts, so there is life, Sadly my 160 Metres antenna has broken, and I've yet to manage to re-run a new one, which with so much work to do at least I don't feel like I'm missing out. The good news is that this will give me time to work on my new ~~mobile ham shack~~, campervan for holidays, and with some recent acquisitions from the two Wally's both ZL1WE and ZL1JLM, I have plenty of toys to use, and good chance of Mobile HF, VHF and UHF, Ian too ZL1IRC has provided a new balun for me to try out some end fed wire antennas, so I should be able to sort out some decent reception when parked. And since Ann-Maree is keen to get out and travel the country, I'm sure there will be a few national parks, that need to be activated, so keep an ear out, and I might yet pop up for QSO and park activation on HF.



Also don't forget that we have lighthouse weekend coming up in August, and this year, to avoid clashing with the 75<sup>th</sup> anniversary of victory in the pacific day, the date is 48 hours between 22<sup>nd</sup> to 23 August (UTC), Dave ZL1DK is out there, and so is Peiter, ZL1PDT, I'm sure there will be a few more as we get closer to the date, so put the date in the calendar as there will be plenty of people chasing contacts, and they would love to hear from you, even if it's from the QTH, we also appreciate you went out in the cold to make the contact

Hopefully, by then, I will have found an unobtrusive arrangement for the batteries, solar connectors, radios and RF connectors that will us to be involved in the lighthouse weekend, while not dominating the holiday mode of the vehicle. (Yes all holes will require careful planning and prior permission ... Probably ☺)



But this is also part of the hobby, Radio can be a passion, but it should fit alongside all that we also like to do and that's why we have so many different parts, Travelling for those who like the road, Summits for those who like to climb hills, chasing for those who like to escape to the shack, national system to keep in touch, local repeaters, and simplex calling frequencies like 144.100 or 141.200 for SSB simplex, 144.500 FM Calling, 146.475 for FM calling (if you have you antennas tuned for repeaters), 146.500 for SOTA simplex (or rag chewing when its quiet) 146.525 might have a POTA if the SOTA is busy. And of course HF bands, with nets and the odd CQ caller.

The lockdown had a lot of old hams dust off the sets and make some good contacts, it would be sad if we lost that, then we have IRLP, echolink, DMR and D-Star repeaters as well as all-star, if you still have your pi handy, And of course we have never had so many satellites up in the sky, thanks to the cubesat community, many of whom are allowing the installation of amateur radio payloads to allow the cubesat a life after its primary mission is complete. While not all pass over NZ, there have been some members who have managed contacts with just a handheld whip, so a handheld yagi could open a new world, if you can just figure out where to point it. Maybe a use for that old Baofeng, you try not to talk about.

There are no limits, except those of your imagination, experimentation is part of the Ham DNA, number 8 wire technology might be forgotten by much of the country, but we might just be what we need to get some of it back, We may be in the Cul-de-sac at the bottom of the world, but if we can't bring back the give it a go mentality, then who will?

A few hours in the shack now, might open a whole new world of fun in the summer months.

Now, where did I put those antenna designs?

73 for now Gavin - ZL1NUX

## **International Lighthouse Lightship Weekend - ILLW**

Normally held on the 3rd full weekend in August

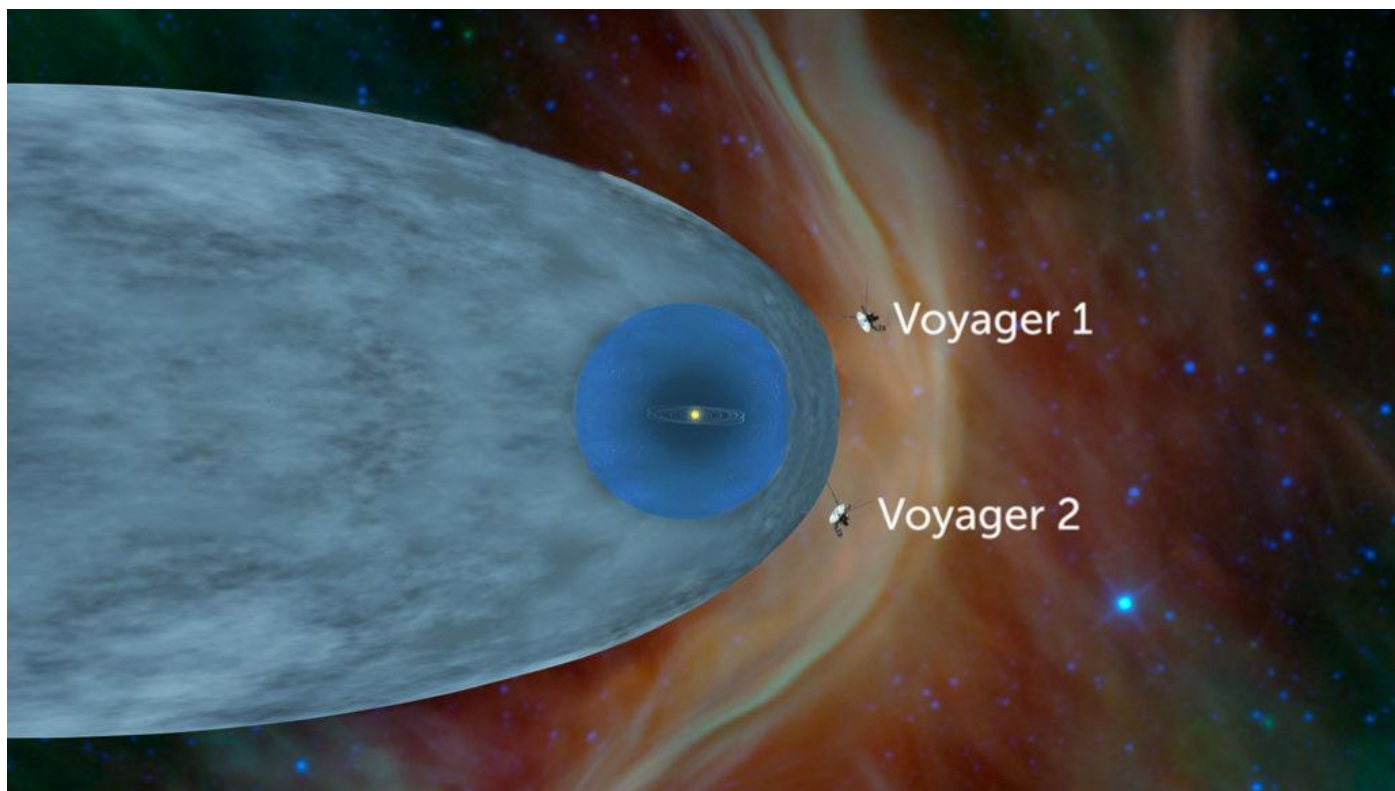
This year: 00.01 UTC 22nd August to 2400 UTC 23rd August 2020 (48 hours)

(Note change of weekend out of respect for those commemorating the 75th anniversary of Victory in the Pacific (VP) day on 15th August 2020)

Next year: 00.01 UTC 21st August to 2400 UTC 22nd August 2021 (48 hours)

### VOYAGER 2 REVEALS THE DYNAMIC, COMPLEX NATURE OF THE SOLAR SYSTEM'S EDGE

Data from two NASA spacecraft chart the boundary between the sun and the rest of the galaxy



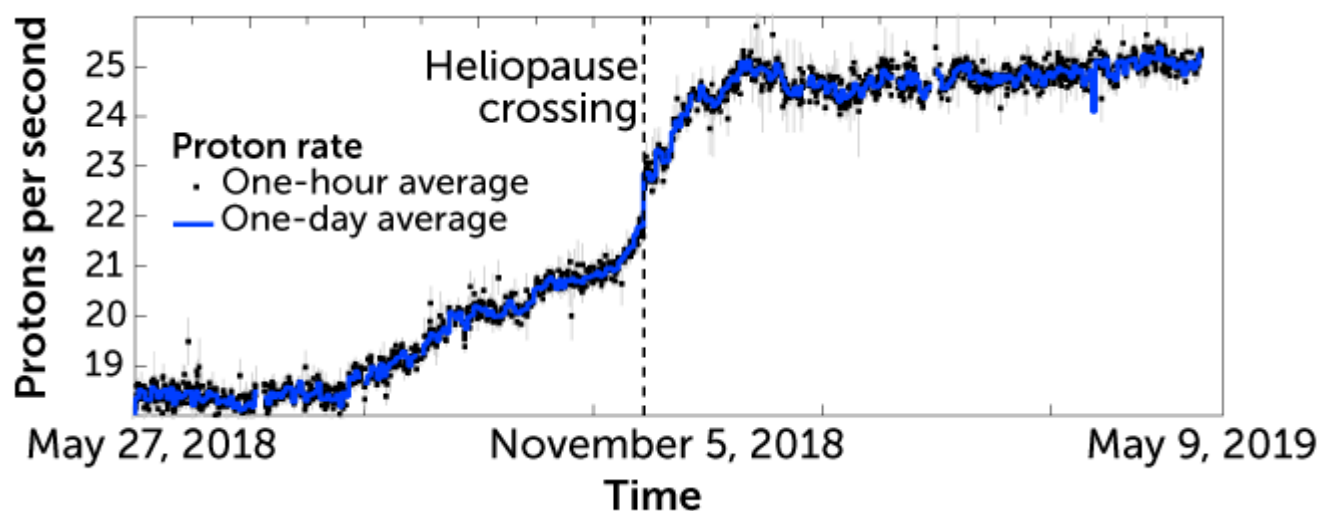
Humanity's second ambassador to interstellar space has reported back from the frontiers of the solar system — with the message that the border of the sun's territory is a complex and ever-changing place.

Late last year, NASA's Voyager 2 spacecraft broke through the heliopause, the boundary where the solar wind gives way to the plasma that permeates the galaxy. Six years earlier, its sister probe, Voyager 1, made its own heliopause crossing. Now, the combined results of these two journeys, published online November 4 in several papers in *Nature Astronomy*, offer the most detailed look yet at this largely unexplored region of space.

The view outside Voyager 2's window changed on November 5, 2018, when the craft was about 17.8 billion kilometers from the sun — 119 times farther away than Earth — and the density of the surrounding plasma jumped by about a factor of 20. The steady stream of low-energy atomic particles from the sun dropped away, replaced by a barrage of far more energetic particles known as cosmic rays.

These changes told researchers that Voyager 2 had left the sun's protective magnetic bubble, just over 41 years after beginning its sight-seeing expedition across the solar system.

As Voyager 2 crossed the heliopause — the boundary where the solar wind yields to interstellar plasma — it measured many more high-energy protons striking it per second. These particles, known as cosmic rays, originate far out in the galaxy and are usually deflected by the sun’s magnetic field.



Despite encountering the heliopause at different times and locations — the two spacecraft are farther from each other than each are from the sun — some things looked similar. The magnetic field looked pretty much the same on the inside and the outside of the boundary: Somehow, the sun’s magnetic field lines up nearly perfectly with the local galactic field, contrary to expectations. “We could dismiss that as coincidence in one case, but we can’t do that twice,” study co-author Leonard Burlaga, of NASA’s Goddard Space Flight Center in Greenbelt, Md., said in the news conference.

There were notable differences in the two crossings as well. Voyager 1 sailed through a largely stagnant solar wind for two years before reaching the heliopause, whereas the stream of solar particles alongside Voyager 2 was quick and steady right up to the boundary. Voyager 1 encountered galactic material intruding into the solar bubble, while Voyager 2 instead witnessed solar particles leaking far out into interstellar space.

Figuring out what many of these results mean will be challenging: The probes interrogated two boundary spots separated by nearly 24 billion kilometers. But this boundary is always changing. It breathes in and out in sync with the sun’s 11-year activity cycle, and eruptions on the sun’s surface make their way out to the heliopause and stir things up.

New data will have to wait. So far, five spacecraft have made it (or will make it) this far into space — but the Voyagers are the only ones sending back reports. Pioneer 10 and 11, launched in 1972 and 1973, stopped working years ago. New Horizons, which paparazzi’d Pluto in 2015, recently detected a possible glow of hydrogen gas at the solar system’s edge. But that craft may run out of power before it reaches the heliopause. In the meantime, NASA is looking into launching a dedicated interstellar probe as early as the 2030s.

For now, the Voyagers are humanity’s eyes and ears in interstellar space, and the team estimates that both spacecraft have about five years of service left. Electrical power comes from heat generated by a nugget of plutonium, and as the probes cool, they lose the ability to keep their instruments running. When asked if he expected the Voyagers to last this long, NASA replied: “We’re certainly surprised.”

No school like an old school – at least as far as probes go.

## SEEN OR HEARD AROUND THE SCENES

### TECHNICAL WRITERS STILL WANTED

The NZART exam rewrite committee needs writers from among the amateur community to help make our exam more relevant for current times.

Below is a list of the broad sections they need writers for.

- Receivers
- Transmitters

If you are interested please contact: Don MacDonald ZL3DMC [info@nzart.org.nz](mailto:info@nzart.org.nz) and they will send detailed requirements and a guide for writers.

### NZART MEMORIAL CONTEST

The NZ Memorial Contest will again be held over the first weekend in July (4th and 5th)

The contest was first held in 1946 and its purpose was to commemorate those NZ radio hams who lost their lives during WW2.

So, this year being 2020 it is worth remembering that this will be the 75th anniversary of the end of WW2 in 1945. So why not commemorate and let us celebrate by spending some time on the air operating in an easy fun contest with each other. The rules and the summary sheet files for the contest can be found at:

<https://www.nzart.org.nz/activities/contests/memorial-contest>

**Two antennas met on a roof, fell in  
love and got married. The ceremony  
wasn't much, but the reception  
was excellent.**

### MID WINTER DINNER – FRIDAY JULY 17

Franklin Branch invites all members or Papakura to a combined mid-winter dinner at the Pukekohe Cosmopolitan Club on Friday 17 July. Smorgasbord Dinner – Arrive at 6pm for a 6:30pm dinner  
Cost is \$21.00 if you prefer to avoid desserts, or \$25 with sweets to follow.

This will be both a release from restrictions that have been part of our pandemic response, and also a kind of celebratory recognition of Ian ZL1PZ who will have reached 100 years old on 2 July

Please advise Ian ZL1AOX if you are planning to attend, so we can confirm numbers with Tom ZL1TO, These are always good events, and a chance to get out and meet with so like minded Amateurs, and often cheaper than your average junk sale

## TARANAKI JUNK SALE

New Plymouth Branch 27 will be hosting their annual Junk Sale on 26th September 2020. The venue once again is Mangorei Memorial Hall, cnr Kent Road and State Highway 3, New Plymouth.

Buyers will be admitted to the hall at 10:00am, sellers from 8:00am.

Tables are available for \$20 each. To book yours, contact [secretary@zl2ab.com](mailto:secretary@zl2ab.com)

We plan to provide light refreshments for sale before and during the event.

This year, it coincides with the start of the Taranaki Award which runs from 26th to 30th September. Club Station ZL2AB will monitor the local 720 repeater and National System from the event, with every QSO worth 3 points towards the required 25.

The hall is adjacent to Taranaki Aviation Transport and Technology Museum (TATATM). This is well worth a visit and has a good display for the radio enthusiast among many other items.

Further details of both the Junk Sale and the Taranaki Award can be found on the [zl2ab.com](http://zl2ab.com) website or by contacting Doug (ZL3DUG) on [secretary@zl2ab.com](mailto:secretary@zl2ab.com)

## IS IT JUST ME?





## SOME NETS – FOR WHEN YOU ARE LOOKING FOR COMPANY

Day	Time (Local)	Freq (MHz)	Group
Sunday	08:00	3.750	Southern Net
	09:00	3.700	Bch 10. Franklin.
	09:00	3.755	Bch 65. Papakura.
	16:00	7.125	SPAM Net (AM Mode)
	19:00	146.625	YL Net
	20:00	3.710	Bch 42. Titahi Bay
	21:30	3.595	Duran WIA Net.
	21:30	3.595	VK2WI
Monday	19:30	3.757	Bch 12. Hamilton
	20:00	3.540	CW Practice Net
	<i>updated</i> 20:00	3.605	Br 80. Hibiscus Coast
	<i>updated</i> 20:00	Nat System	W.A.R.O
	20:30	3.870	O.T.C (Old Timers Club)
Tuesday	09:00	7.096	Ex Post Office Techs
	21:00	1.850	160m Net _ Ron ZL4JMF
	19:30	3.690	QRP ZL2BH
	20:00	3.581	CW improvers Net
Wednesday	20:00	3.660	Geek Net
	20:00	3.645	Bch 02. Auckland
	20:00	3.745	Bch 84. Bay of Islands
	20:30	146.525	W.R.S.C
Thursday	09:00	7.096	Ex Post Office Techs
	19:30	3.690	QRP ZL2BH
	20:00	3.540	CW Practice Net
	20:00	3.615	Bch 89. REG
	20:30	3.696	ZL10A
	20:30	3.666	LF Net ZL2CA
	20:00	3.690	ZL QRP SSB Net
Friday	20:00	3.850	SPAM (AM Mode)
	20:30	3.650	W.S.R.C.
	20:30	3.560	Digital Modes Net
Saturday	10:30	28.530	10-10 Down Under
	19:30	3.650	Christian Fellowship
	20:00	3.760	???
	20:30	3.600	Ch 62. Reefton/Buller
Daily or Other	07:30	3.696	ZL2OA
	08:30	3.730	ZL3RP
	15:00	14.300	Pacific Seafarers
	17:30	3.760	Home Brew
	17:30	14.183	ANZA DX Net
	18:00	7.115	VK7OB
	19:30	3.720	ZL1MO
	18:30	3.766	ZL3LE
	08:30/20:00	3.730	ZL3RP
	20:30	3.725	ZL2HN / ZL4RF
	21:00	3.677	Counties Net ZL2MA

This is designed to be a living list, Please update whenever you are able:

Also: Calling Frequencies:	Daily	Sunset-Sunrise	3580 USB	NZ FSQCall
Courtesy of Murray ZL1BPU	Daily	Sunrise-Sunset	7105 USB	NZ FSQCall
	Daily	24/7	7104 USB	International FSQCall

I'm told the last of these sees some amazing DX, especially around sunset.

**Papakura Radio Club Inc.**  
**Branch 65 NZART Club Directory 2017**  
 Wellington Park, 1 Great South Road.  
 PO BOX 72-397 Papakura 2244  
 PHONE 09 296 5244  
**Westpac 03-0399-0019896-00**  
**Club website:** <http://www.qsl.net/zl1vk>  
**Club email:** [zl1vk.club@gmail.com](mailto:zl1vk.club@gmail.com)

**Elected Officers**

<b>President</b>	ZL1NUX	Gavin Denby	Ph 09 299 3415	021 1046946
<b>Vice President</b>	ZL1BNQ	Richard Gamble	Ph 09 5371238	021 729270
<b>Secretary</b>	ZL1AOX	Ian Ashley	Ph 09 2981810	021 1981810
<b>Treasurer</b>	ZL1MR	David Wilkins	Ph 09 2999346	021 1857903
<b>Committee</b>	ZL1RJS	Rob Stokes	Ph 09 2961152	021 307005
	ZL1IRC	Ian Clifford	Ph	021 8248400
	ZL1ASN	Rolly Adams	Ph 09 2966107	021 0427760
	ZL1DK	David Karrasch	Ph 09 296 8264	021 560180
	ZL1RIC	Ricky Hodge		021 666421
<b>AREC Section Leader</b>	ZL1BNQ	Richard Gamble	Ph 09 5371238	021 729270
<b>CD Liaison</b>	ZL1AOX	Ian Ashley	Ph 09 2981810	021 1981810
<b>Newsletter Editor</b>	ZL1NUX	Gavin Denby	Ph 09 299 3415	021 459 192
<b>Hall Custodian</b>	ZL1AOX	Ian Ashley	Ph 09 2981810	021 1981810
<b>Newsletter.</b>	Contact: <a href="mailto:zl1nux@outlook.com">zl1nux@outlook.com</a>			

Our newsletter is published monthly and normally distributed just prior to the club meeting. Please forward articles etc to editor Wednesday 1 week prior to the general meeting. Do notify any change of address. Including E-Mail Address.

**Meetings**

General Meetings are held at the Club rooms on the 1st Wednesday of each month, starting at 7.30pm. Look at your calendar and mark these nights. The speaker follows the General Meeting.

Project Evenings are on the 4th Wednesday of each month.

Committee Meetings are held on 3rd Wednesday of each month at 7.30pm, unless advised.

Activity Nights are held on the 2nd Wednesday starting at 7.30pm.

AREC Meetings are on the 5th Wednesday night, also starting at 7.30pm

**AGM:** Held in November

**Subscription:** Full membership and newsletter \$20.00

Family Membership and newsletter \$30.00

Student or Country DX membership \$10.00

**Bank Account number: 03-0399-0019896-00**

**Working Bees** As required.

**Branch 65 21 Award:** For contacts with ZL1VK (5 Points) and 8 Papakura Radio Club Members (2 Points each) after January 2011. Total 21 Points. Cost \$5-00. Certified list and \$5-00 to Secretary, Papakura Radio Club. Address above.

**ZL1VK Club Nets**

146.900 MHz Sunday at 8.30am. Controller ZL1NUX, Gavin Denby. If the repeater is not available, listen 146.825 MHz repeater or 146.475 simplex.

3.755 MHz Sunday at 9.00am. Controller ZL1BNQ Richard Gamble. (Linked to 146.675 & 438.775)