



Western Suburbs Radio Club Inc.

July 2014 Newsletter

ZL1AC, Branch 03 NZART 3000 Great North Road New Lynn,
 PO Box 15-122 New Lynn WAITAKERE 0640
 President: Ian Sangster ZL1RCA, Vice President – Grant Manning ZL1GSM.
 Secretary: Roy Milam ZL1WI. Newsletter Editor – John Neill ZL1NE
 VHF Club Net Wednesday 07:30pm 146.525 MHz,
 HF Club Net Fridays 07:30pm 3.650 MHz
Website <http://www.qsl.net/zl1ac>

Club Calendar

Saturday	26 th	July	Committee Meeting 9:00 am
Saturday	26 th	July	Club Meeting 10:00 am – November sale planning meeting and rag chew
Saturday	2 nd	August	Manukau Radio Club Used Equipment Sale. Guide Place Papatoetoe 0900. Gold Coin donations
Saturday	9 th	August	Hamilton Used Equipment Sale
Saturday	23 rd	August	Committee Meeting 9:00 am
Saturday	23 rd	August	Club Meeting 10:00 am – Programme to be announced
Saturday	27 th	September	Committee Meeting 9:00 am
Saturday	27 th	September	Club Meeting 10:00 am – Programme to be announced
Saturday	25 th	October	Committee Meeting 9:00 am
Saturday	25 th	October	Club Meeting 10:00 am – Programme to be announced
Saturday	1 st	November	WSRC Used Equipment Sale – Date to be confirmed
Wednesday	17 th	December	Christmas Dinner at the New Lynn RSA – Date to be confirmed

July Meeting

The July meeting will be planning for the November Used equipment sale. This is unlikely to take up the full meeting so there will be an opportunity for a rag chew.

June Meeting

We had two videos at the June meeting. The first was a documentary about the manufacture of radio valves at the Mullard factory and the second was on the manufacture of black and white RCA television sets in 1959. We had a third but time was against us. Two very interesting videos. The effort that went into manufacturing each valve was amazing.

Junk Sale

The junk sale will be on the 1 November 2014 (date to be confirmed). This is advance notice as we need to collect saleable items for the club table. Go through the ham shack and the workshop and see what is collecting dust. If it is covered in dust, then you may not need it any longer. Maybe you could donate it to the club to assist in raising funds for the club.

Manukau Radio Club

Manukau Radio Club are having a cleanout sale, by way of gold coin donation on Saturday the 2nd August at the Club rooms Guide Place at 0900 hours. We have a selection of electronic units as well as bits and pieces.

Exception is, the test units will be priced down to a really attractive level. All other units etc will sold by a 1 or \$2 gold coin. This a real chance for a real bargain so mark your calendar, we will see you there. You will surprised what you will see.

73's

Terry Rist ZL1TR Sec/Treas

Club Nets

VHF Net 146.525 MHz 7:30pm every Wednesday,
HF Net 3650 KHz +/- QRM/QRN 7:30pm every
Friday. All are welcome to check in on the nets.

The HF Net roster is opposite. The full HF Net roster
can be found on:

<http://www.qsl.net/zl1ac/wsrc-hf-roster.pdf>

25-Jul-14	ZL1RCA	Ian
1-Aug-14	ZL1MW	Brian
8-Aug-14	ZL1WI	Roy
15-Aug-14	ZL1NE	John
22-Aug-14	ZL1RCA	Ian
29-Aug-14	ZL1MW	Brian
5-Sep-14	ZL1WI	Roy
12-Sep-14	ZL1NE	John
19-Sep-14	ZL1RCA	Ian
26-Sep-14	ZL1MW	Brian

Unitary Plan Update

Further submissions close on Tuesday 22 July. Do support the NZART Submission by submitting your own Further Submission. Details are below on how to do this. Partially filled in forms can be found at <http://www.qsl.net/zl1bq/page13.html> on the VHF groups website.

“How to” Guide

A guide for the preparation of “Further Submissions” to Auckland Council’s Unitary Plan.

Further Submissions.

NZART has made a submission concerning amateur aerials/antennas in the Unitary Plan, and Council has now called for submissions which Support or Oppose the NZART one.

There are three ways to make a further submission:

1. Go to the Auckland Council Website <http://www.aucklandcouncil.govt.nz/EN/planspoliciesprojects/plansstrategies/unitaryplan/Pages/further-submissionsform.aspx> and download the PDF submission form, fill it in by hand, and post or deliver it.
2. Go to the Auckland Council Website <http://www.aucklandcouncil.govt.nz/EN/planspoliciesprojects/plansstrategies/unitaryplan/Pages/further-submissionsform.aspx> and fill in the on-line form, and submit it electronically. NOTE - You must fill in every box that is marked with an * (asterisk).
3. Go to the VHF Group website <http://www.qsl.net/zl1bq/page13.html> and download the (partially completed) WORD submission form, complete it on your own computer, and submit it to Council by email at unitaryplan@aucklandcouncil.govt.nz. A copy of your Further submission must also be sent to the “address for service” of the original NZART submission at kdbirt@gisborne.net.nz within 5 days of being sent to the Council (RMA requirement).

We recommend you use option 3.

The Submission Form

Auckland Council requires the format of submissions to comprises two main parts:

1. The first part covers the submitter’s details. Council is required by law to communicate back to you, so all your name and contact details must be entered correctly. Also required in this part is proof that you have an interest “that is greater than the interest the general public has.” You will see we have suggested “I am a licenced Radio Amateur.” You may change this if you have a better reason. You may choose whether you want to appear in person or not and whether you will make a joint presentation at a hearing where there are a large number of similar submissions. We hope that there will be. The authors of the original submission will be appearing at the Hearings.
2. The second part specifies the specific section that you support or oppose, with your reasons. There is a third option - you may also support a specific point *with amendments* (rather than opposing it outright).

Specifying the sections you support or oppose.

Council has distilled the NZART submission into 20 specific “Amendments to the Unitary Plan.” These are numbered 4498-1 through to 4498-20. They are all to do with different aspects of the NZART submission. On the second part of Auckland Council’s form,

- The Submitter’s Name is “New Zealand Association of Radio Transmitters Incorporated”
- The address is kdbirt@gisborne.net.nz
- The submission number is “4498” The Submission point may be “1 to 20” (or if you are really keen, you can deal with each of the points 1 through 20 separately, together with 20 specific reasons.). Tick the “support” box.
- Provision No. of the Proposed Auckland Unitary Plan is given in the “Subtopic” column if you are dealing with each of the 20 points individually. [These are listed on the Council report, pages 385-386]
- Reason (for supporting). A sample reason is provided on the VHF Group website. It is always better, though to provide you own individual reason. Don’t use the word “hobby”. Do use the terms “technology”, “experimentation” “communication” or “Licenced radio amateur”
- The whole or part. If you are supporting the recommendation, but want it modified (say, you want to increase the maximum number of antennas from 12 to 13 per site), tick the allow box, and add the comment about 13 antennas under “specify precise details”.

The Auckland VHF Group has identified a submission which opposes the installation of antennas close to dwellings made by Hartwig Clasen, submission number 5219 at points 24 and 25 [page 771 of the same Council report]. A second “Further submission” has been created to oppose the restrictions which Mr Clasen would like the Council to put in place. The same procedure as above should be used to send this submission to the Council. A copy must also be sent to the hartwig_clasen@yahoo.com.au address within 5 days.

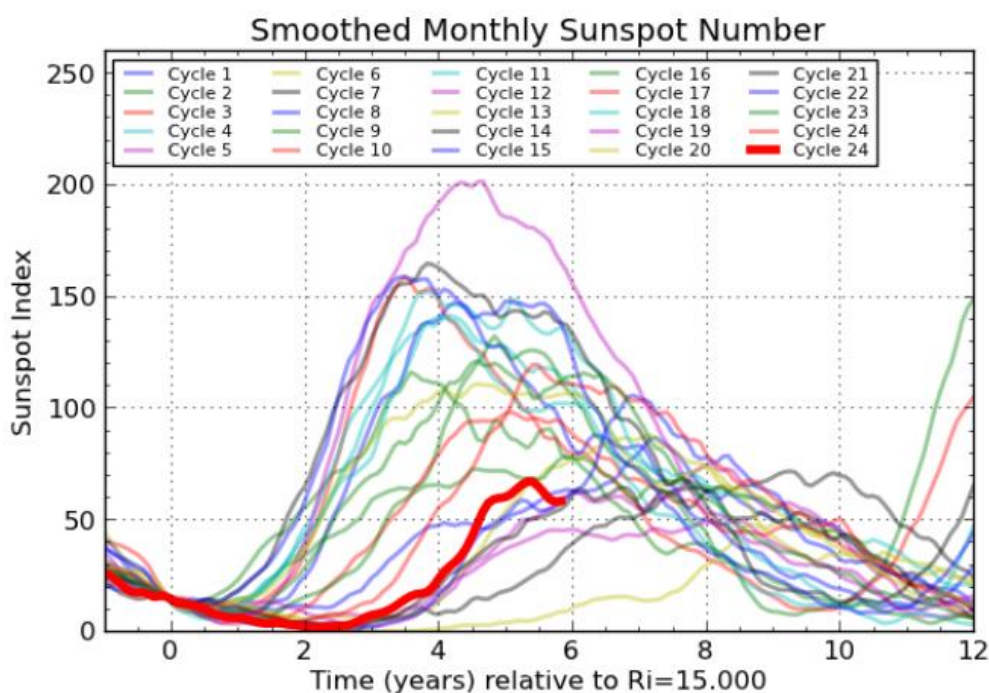
Due Date

Your submission *must reach a Council Office by 5:00pm on 22 July 2014*. You can deliver it in person, Email gets it there instantly, but allow up to 5 days for NZ Post to deliver.

Nice piece of work on solar cycles

Randy Crews, W7TJ, has interesting observations about Cycle 24

<http://www.stce.be/newsletter/images/2013/19SolarCycleFC2.png>

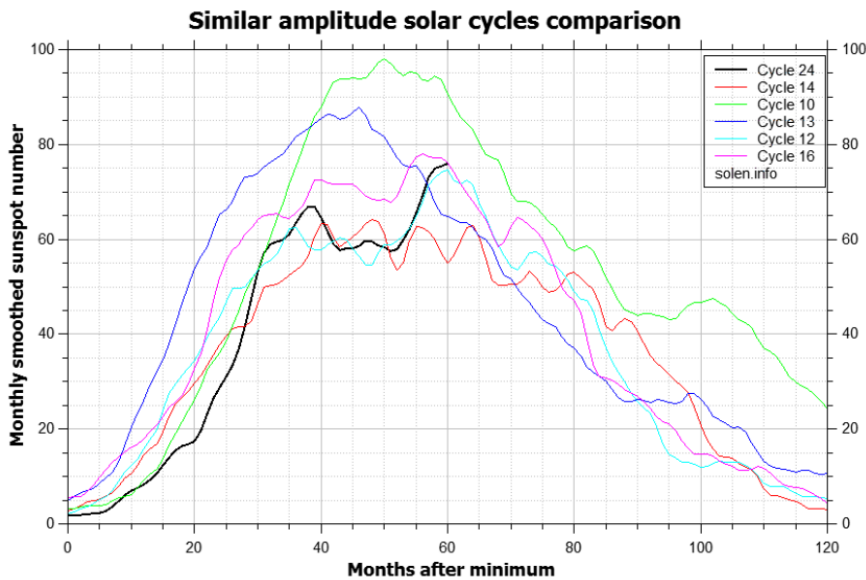


clearly shows how cycle 24 compares relative to other cycles. Note that we are at the 72 Month mark, 6 years into this cycle. Looking at other cycles, it's easy to see cycle 24 is reaching the end point as other cycles have done. Additionally, if a cycle starts weak (as cycle 24 did) it will finish weak - thus far holding true to history.

Speaking of starting weak, it took cycle 24 two and one half years from the bottom in late 2008 until the solar flux climbed above 100 (February, 2011) typically the average time for this to happen is 12 months. This was the first time the solar flux reached 100 since 2005!

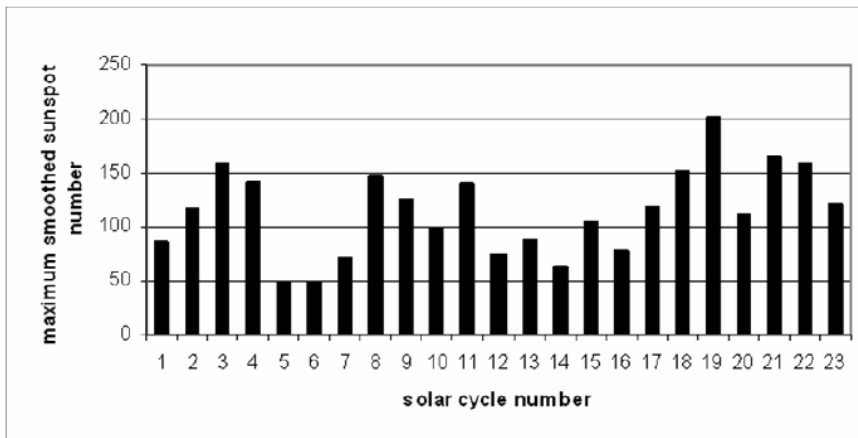
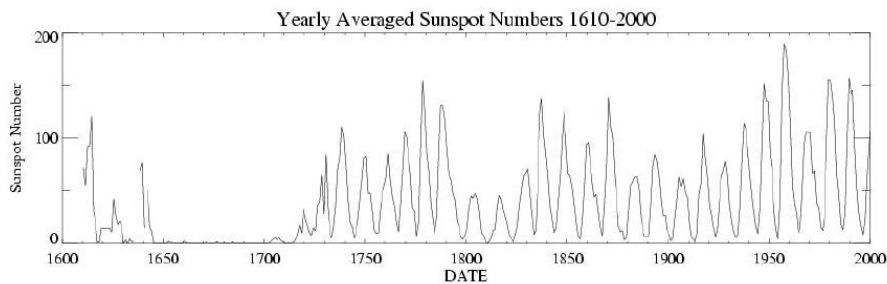
Here is a graph of the weak cycles, 24 of course included:

http://www.solen.info/solar/images/comparison_similar_cycles.png



This cycle may not be as weak as cycle 14, but currently it is running close to cycles 16 and 12.

See <http://k9la.us/A Look at All Twenty Three Solar Cycles.pdf>
(Ed Further explanation if you go to the website above)



This shows a nice bar graph of all cycles up to 24 provided by K9LA Clusters of high and low cycles trend together in larger macro cycles of 40 to 50 years. Fitting a trend line to the graph, we are definitely on a downward trend with regard to the big picture, but also the near term outlook.

Reference the graph on page 4 at:

<http://www.swpc.noaa.gov/weekly/pdf/prf2027.pdf>

(ED 21 pages of this – click on the web site if you want further information)

Notice the wide variation between monthly highs and lows. (Solar Flux Values of 200+ and mid-90s all within a 30 day period.) This is also typical of a cycle reaching the end of its max point - wide monthly fluctuations from min to max where it previously varied maybe 1/3 of the range. (Cycle 22 had a 160 point monthly variation in January of 1991, with solar flux ranging from 200 to 360.)

Cycle 24 had a brief peak in November of 2011, then was flat until October 2013 when the average monthly solar flux steadily climbed month after month, reaching average monthly peak of 170 in February of this year, then declining every month consistently thru June of this year.

How much of a bounce back we have in July and subsequent months will really depend on not only the number of monthly sunspots, but also their magnetic size and complexity, which this year has been absolutely key to cycle 24's second peak, and it's usurping the November 2011 highs.

Conclusion: The peak of this cycle 24 will go down to be February of 2014 as all the aforementioned data confirms. We may find cycle 24 giving a last hurrah this fall, but it would be strictly gratis and on borrowed time.

Livingston and Penn have it right. If the size and magnetic strength of sunspots resumes its downward trend, we will indeed have a "Propagation Winter" and cycle 25 will be even lower.

Also keep in mind referencing the first graph (of the weak cycles) we will have considerably lower highs from which to fall from this cycle compared to cycles 21, 22, and 23. (cycle 23 took 5 years, 2001 to 2006, before we entered the low portion of the cycle with solar flux values of 70 to 80. With cycle 24, the fall could materialize as quickly as it began in October 2013. It will be real interesting to see how all this plays out."