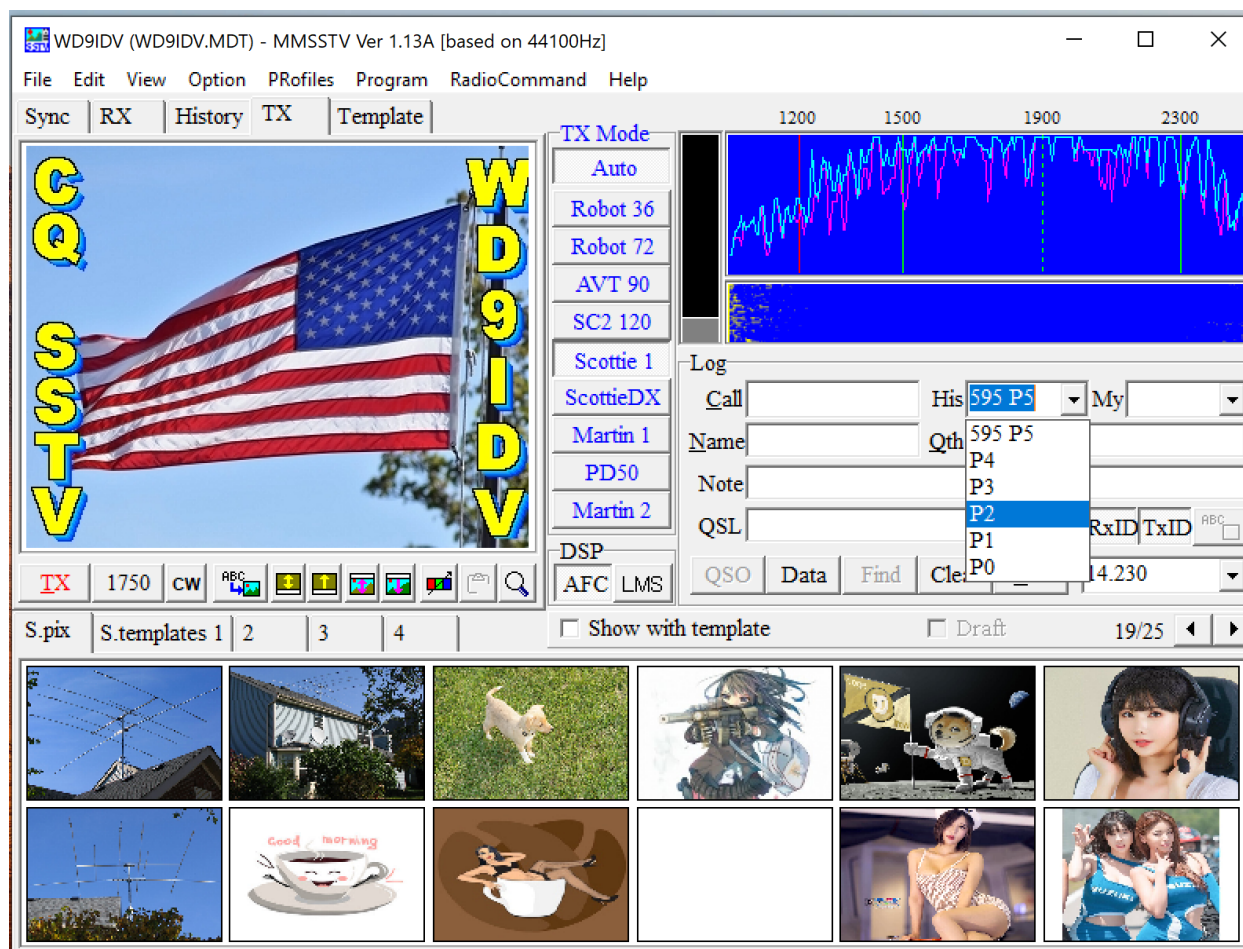


Modify **MMSSTV** or **YONIQ** for P-Signal Reporting

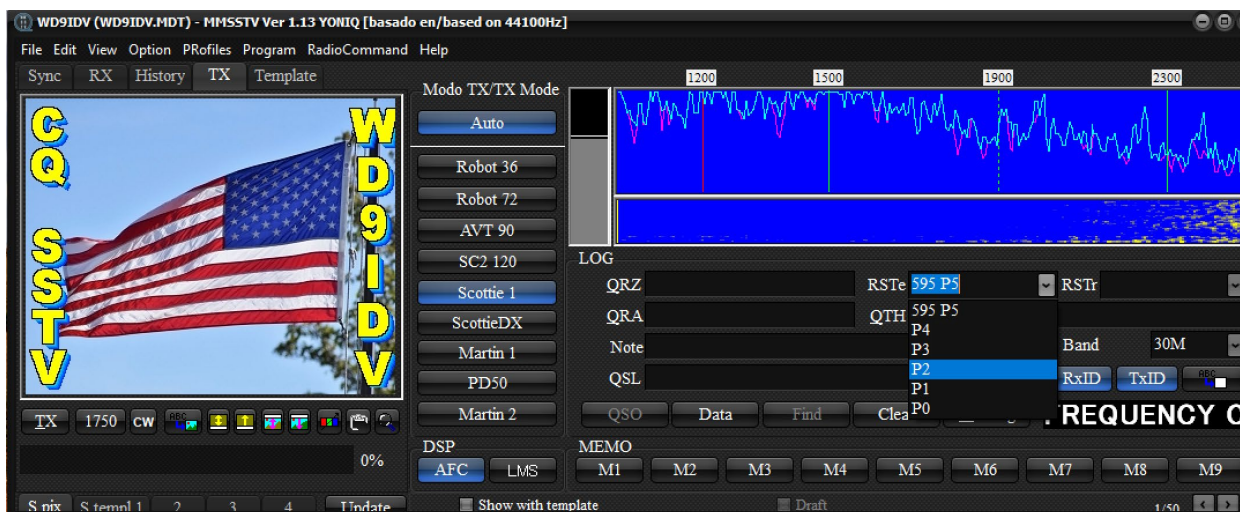
It is easy to modify **MMSSTV** or **YONIQ** so that the P5 to P0 signal report possibilities appear in the **His** and **My** signal (Log) in **MMSSTV** report drop-down boxes in the logging area of the software.

If you are using **YONIQ** then they will appear in the **RSTe** and the **RSTr** drop-down boxes in the logging area of the software.

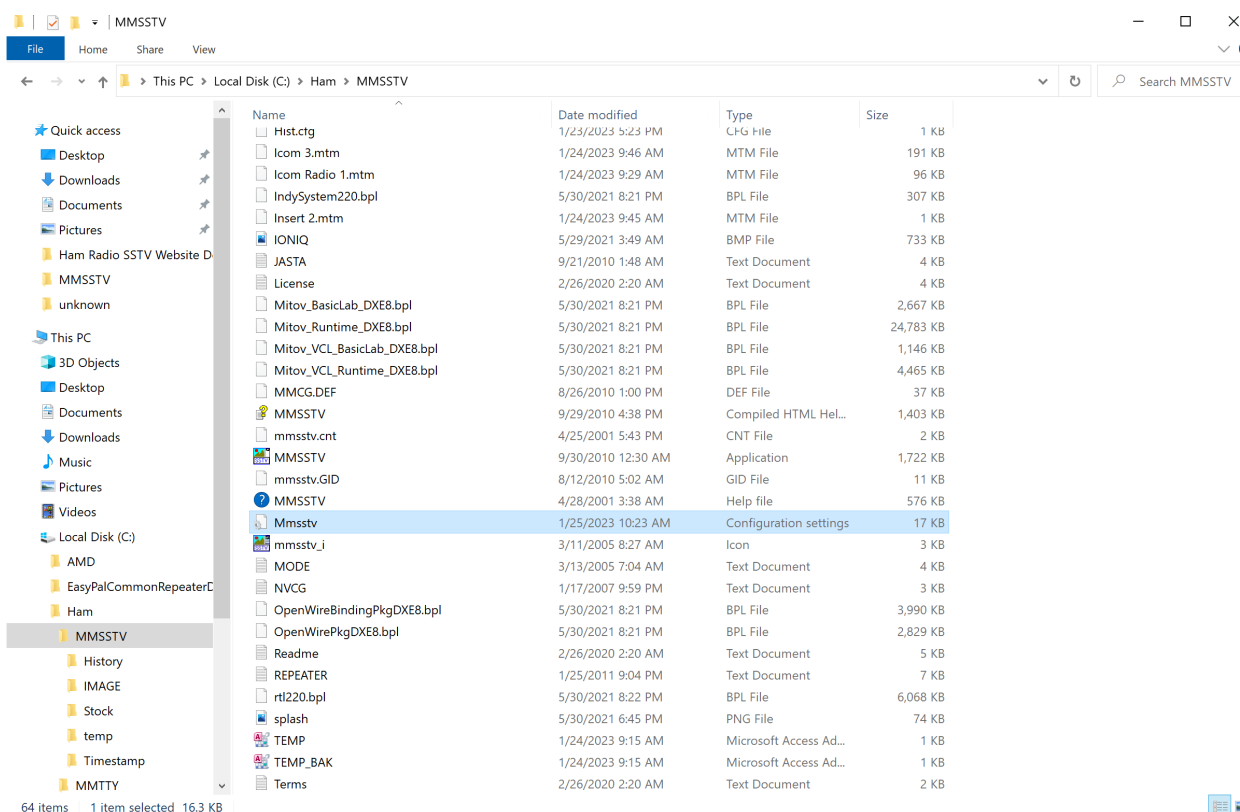
MMSSTV



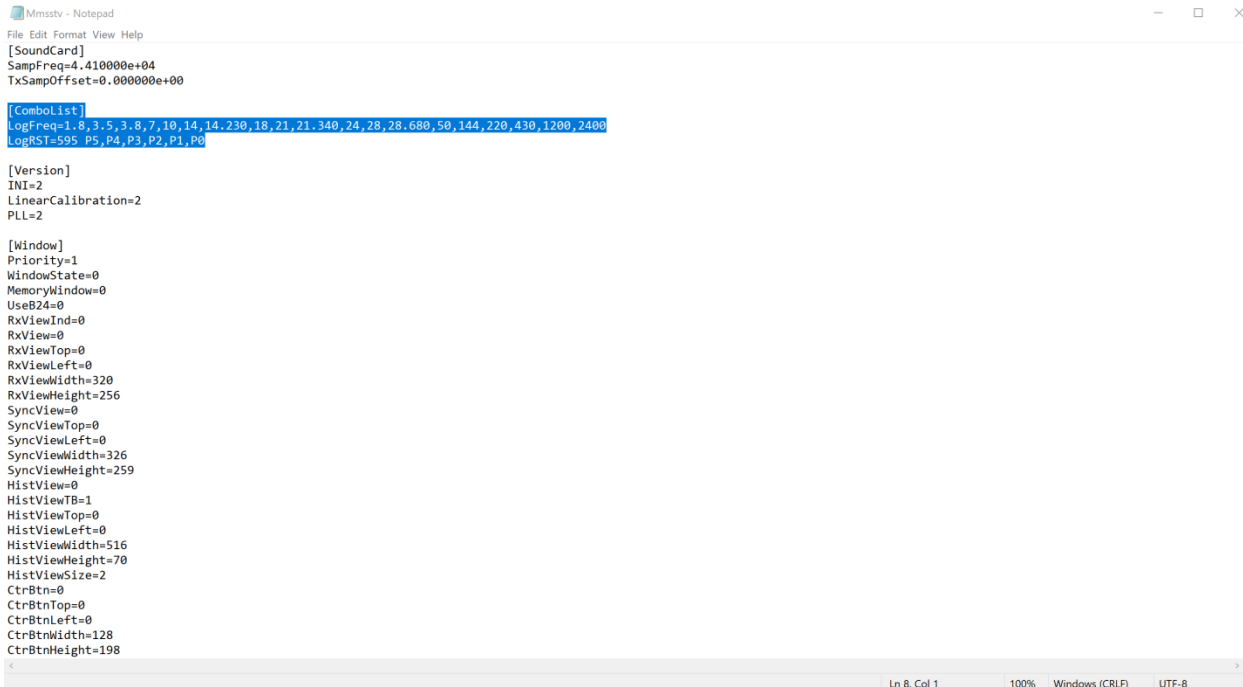
YONIQ



Go to the sub-folder on your hard drive at Ham>MMSSTV. There you will see the MMSSTV directory listed as “**MMSSTV Configuration settings**” file type. Double click on that and you should see the file contents on your Notepad. These are all the user-defined variables which you can modify.



Near the top, under “**ComboList**”, you will see the **LogRST** line to modify.



```
File Edit Format View Help
[SoundCard]
SampFreq=4.410000e+04
TxSampOffset=0.000000e+00

[ComboList]
LogFreq=1.8,3.5,3.8,7,10,14,14.230,18,21,21.340,24,28,28.680,50,144,220,430,1200,2400
LogRST=595 P5,P4,P3,P2,P1,P0

[Version]
INI=2
LinearCalibration=2
PLL=2

[Window]
Priority=1
WindowState=0
MemoryWindow=0
UseB24=0
RxViewInd=0
RxView=0
RxViewTop=0
RxViewLeft=0
RxViewWidth=320
RxViewHeight=256
SyncView=0
SyncViewTop=0
SyncViewLeft=0
SyncViewWidth=326
SyncViewHeight=259
HistView=0
HistViewTB=1
HistViewTop=0
HistViewLeft=0
HistViewWidth=516
HistViewHeight=70
HistViewSize=2
CtrBtn=0
CtrBtnTop=0
CtrBtnLeft=0
CtrBtnWidth=128
CtrBtnHeight=198

Ln 8, Col 1    100%    Windows (CRLF)    UTF-8
```

Modify the **LogRST** line as you see fit.

Example:

LogRST=595 P5,P4,P3,P2,P1,P0

In the images listed above for both software programs, are the **Log RSTe (YONIQ)** or **Log His (MMSSTV)** settings. You will see how I have configured my P signal reports. **595 P5**, appearing first in the dropdown box in MMSSTV or YONIQ. You can configure the drop down box how you want your listing to appear.

For example, LogRST=595, 575, P5, P4, P3,P2,P1,P0

You can also configured **LogFreq** to suit your own preferences (Optional).

For example, LogFreq=3.370, 7.181, 14.230, 14.233, 21.340, 28.680

Once you are satisfied with your specifications, go to File>Save. You will need to restart MMSSTV or YONIQ in order for the new configuration to take effect.

PS. You can have both MMSSTV and YONIQ installed to the same default directory. Only one software program can run at the same time. The same configuration file is used for both programs.

Hope this helps....Robert WD9IDV

Credit for this help file goes to Larry WA9TT.



P5: Broadcast Quality



P4: Very Good, Some Noise



P3: Good, More Noisy



P2: Fair, Noisy



P1: Barely Visible



P0: Unusable