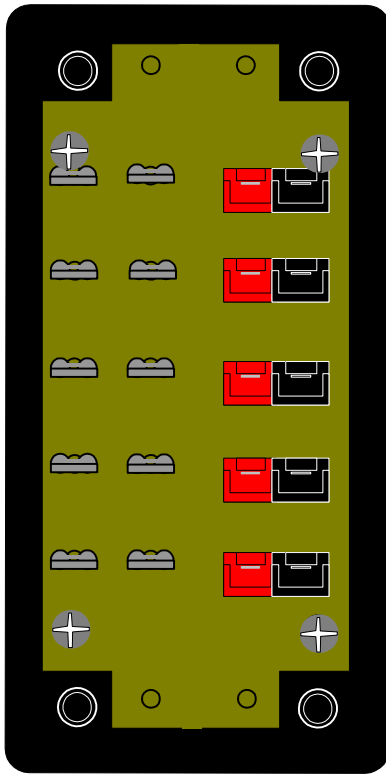
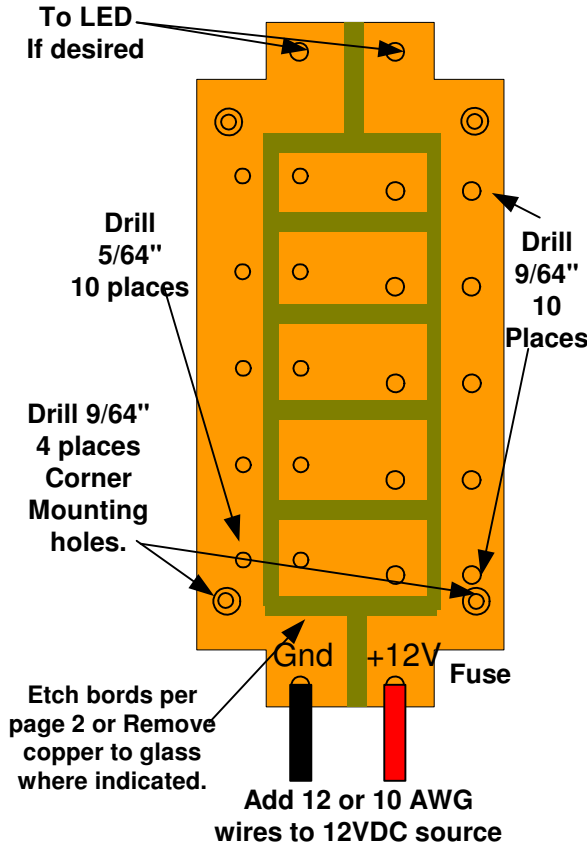


Use #4 Screws
to mount to bosses



Template Copper Clad Board Stock.
Print copies of this drawing. Cut out
templates. Tape to Copper stock and
cut to match. Drill Holes through
template and copper stock to match.

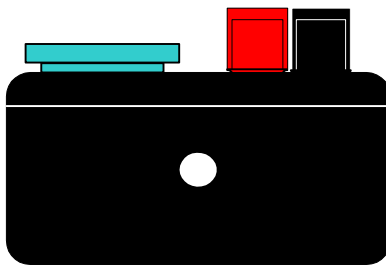


Template Top of Box.
Cut holes through template and box to
match.



Cutout top of
box as indicated

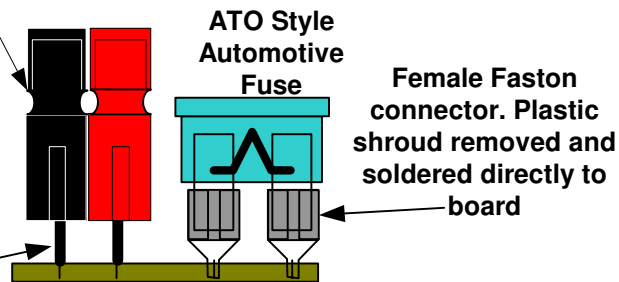
Radio Shack Project
Box, 270-1802, 4x2x1



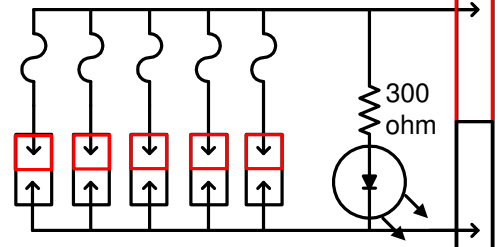
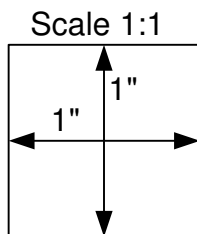
Drill hole for wires to
12Vdc Source.

Prepare five Anderson Power Pole pairs
with 2 inches of 12 or 14 AWG solid wire.
Place in mounting holes on PWB Material

Use 1/8" drill bit to space
connectors above board
material. Solder to board.



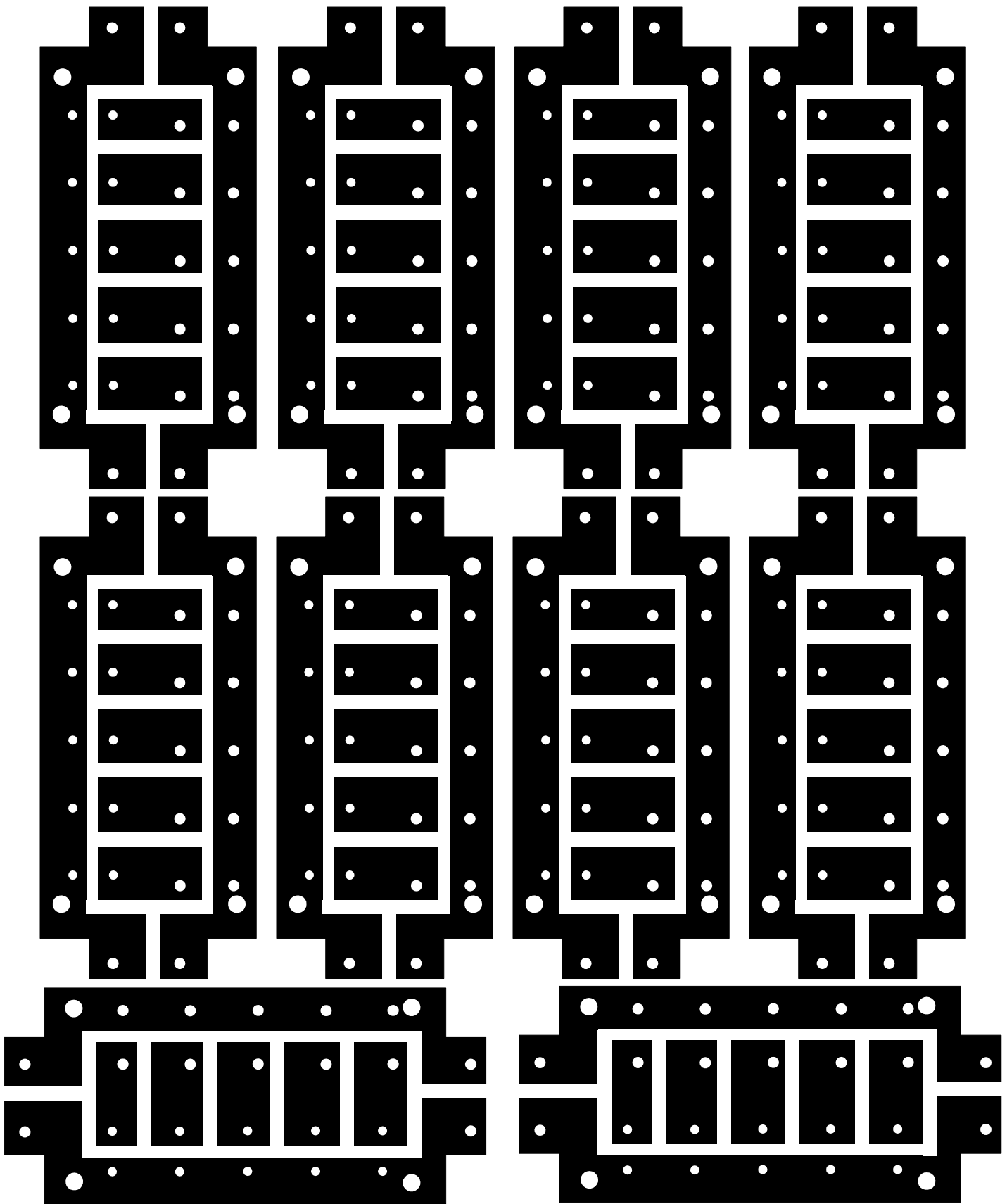
Schematic



Date	Revision/Addition/ Note	by
Nov 26 2005	Initial Drawing and concept	GSC
Dec 5 2005	Tightened up dimensions, added LED and schematic	GSC
Dec 10 2005	Added 1" scale block for drawing	GSC
Apr 19 2006	Added Radio Shack Part number	GSC

Drawn By: Gerald Crenshaw WD4BIS	Date: Nov 26, 2005
Engineer: Gerald Crenshaw WD4BIS	Date: Nov 26, 2005
Checked By: Janet Crenshaw WB9ZPH	Date: Nov 26, 2005

From the bench of: Amateur Radio Station WD4BIS	Page 1 of 1
Title: Anderson Power Pole 5 Position Fused DC Distributor	



Date	Revision/Addition/ Note	by
Nov 26 2005 Dec 5 2005 Apr 19 2006	Initial Drawing and concept Tightened up dimensions, added LED and schematic Added Radio Shack Part number	GSC GSC GSC

Drawn By: Gerald Crenshaw WD4BIS	Date: Nov 26, 2005
Engineer: Gerald Crenshaw WD4BIS	Date: Nov 26, 2005
Checked By: Janet Crenshaw WB9ZPH	Date: Nov 26, 2005

To print a reversed copy for making printed circuit boards. Print to HP laserjet 4 M, File, Print, Properties, Advanced, Postscript options, Mirror Image.

From the bench of: Amateur Radio Station WD4BIS	Page 1 of 1
Title: Anderson Power Pole PWB for 5 Position Fused DC Distributor	