

Chickasaw Amateur Radio Association Newsletter



Volume 2, Issue 1

January, 2011

Board Members 2010

*Tim Jones N5PYQ
President*

*Denver Woods
W5LJD
Vice President*

*Jim Sanders
KE5RHM
Secretary*

*Tommie Rodgers
KE5NBD
Treasurer*

*Jud Rodgers
KE5OPL
Board Member*

Christmas Party

On December 10, 2010 we had our annual Christmas party at Tim N5PYQ & Kim's KB5LIN home. There was plenty of good food for everyone. Elec-



tion of new board members was held and they are posted on the right side of this page and on our website. Music was provided by Mike K5OMC, Steve W5GD, Josiah

KE5EAU and Nina KF5CSC. They did a great



job. Lots of good conversation and fellowship was had by everyone.

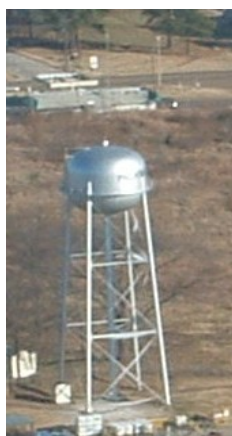


Again we would like to

thank Tim and Kim for being so gracious in opening up their home for all



of us. There was one guest that just could not get passed the front door.



146.910 Repeater

The President's Corner

Welcome to 2011 and the 35th year of the Chickasaw Amateur Radio Association. My name is Timmy Jones, N5PYQ, and I have been elected to serve as President for the 2011 year. I am honored to have this position and excited about this year.

CARA accomplished great things in 2010 and I would like to see the same in 2011. As the President, I would like for our members to send suggestions for improvement. Your opinion is very important to the progress of this organization. Send your ideas to CARA.Hernando@gmail.com.

One goal I would like to see accomplished this year is linking the Hernando repeater with the Holly Springs repeater. This project will require significant funding. The annual \$30 per family dues will enable CARA to continue to improve and expand. Thank you for being consistent in financially supporting your club. Dues may be paid at monthly meetings, or sent to CARA, PO Box 2, Hernando, MS 38632.

Looking forward to a great year!

73

Timmy, N5PYQ

Inside this issue:

President's Corner	1
Training	2
Area Ham Fest	2
CERT	3
Satellite	3
Training & Information Net	3
Nets & Monthly Meetings	5

Training

Congratulations to Steve KE5GYQ and Paul KF5EQE on their upgrade to Extra.



Tammy KE5YKH & Mike K50MC enjoying the Christmas party and the new newsletter

Annual Membership Dues

Well it is that time again. Time for everyone to send in your annual dues. The dues that you pay are vital in keeping our repeaters on the air and are tax deductible. As you may or may not know we have two additional repeaters the 147.225 in Holly Springs and the 145.350 on the Baptist DeSoto Hospital. So your annual dues are much needed in order to keep all three on the air so they will be available during emergencies and for normal activities. If you are not a member of C.A.R.A. please consider becoming a member. We have a club meeting every third Monday at 7 P.M. at the Lewisburg Fire Department. Application for membership is on page 5 of this newsletter.

2011 Dues for Calendar Year (JANUARY 1 – DECEMBER 31)

\$30.00 - MEMBERSHIP DUES

Make checks payable to:

Chickasaw Amateur Radio Association (C.A.R.A.)
 P.O. Box 2
 Hernando, MS 38632

New Website

We are currently soliciting pictures or other content you would like to see posted on the website. If you have something you would like to contribute or see posted please send me an email at kf5bti@gmail.com

Area Hamfest

Capital City Hamfest 2011

Date: January 28 & 29, 2011
Location: West Bay, Mississippi Trade Mart on the Mississippi State Fairgrounds Jackson, MS.

Talk-in: 146.16/76 (77Hz tone) Primary, 146.34/94 (100 Hz tone) Back-up

Hamfest Times: Friday 5:00PM - 8:00PM, Saturday 8:00AM - 4:00PM
Admission: \$6.00/person one admission is good for both days.

Memphis Freefest

One Day Only
 Saturday April 9, 2011
 9 am to 3 pm

Bartlett Station Municipal Center
 5868 Stage Road Bartlett
 North side of Stage Road just west of Bartlett Blvd.



“Support your local nets and Check in”



Community Emergency Response Team – CERT

CERT is a training program that prepares you to help yourself, your family, and your neighbors in the event of a disaster. During an incident, emergency service personnel may not be able to reach everyone right away. By getting trained in CERT, you will have the skills to help emergency responders save lives and protect property.

As a member of a CERT team, you can respond to disasters, participate in drills and exercises, and take additional training. CERT teams are known and trusted resources to emergency responders and their communi-

ties. In addition to supporting emergency responders during a disaster, the CERT program builds strong working relationships between emergency responders and the people they serve. CERT teams also help the community year-round by helping with community emergency plans, neighborhood exercises, preparedness outreach, fire safety education, and workplace safety. CERT training takes about 20 hours to complete and provides critical skills in emergency preparedness and response.

Participants learn how to:

- Identify and anticipate hazards
- Reduce fire hazards in the home and workplace
- Extinguish small fires
- Assist emergency responders
- Conduct light search and rescue
- Set up medical treatment areas
- Apply basic medical techniques
- Help reduce survivor stress
- People interested in taking an active role in hometown preparedness
- Neighborhood Watch groups
- Community leaders
- Parents
- Communities of faith
- Teachers and administrators
- Members of clubs and civic organizations



Steve W5GD... is that a Texas Longhorn?

Satellites

Ever thought about working the FM amateur satellites (or Birds as hams refer to them) but thought you did not have the right equipment or too expensive. Well if you can program split frequencies in your HT or mobile (transmit on 2 meter and receive on 440), you're set! Most of the FM Satellites main **V/U** mode, the **UPLINK (your transmit)** frequency (to AO-51) for voice is 145.920MHz. The **DOWNLINK (your receive)** freq (from AO-51) is 435.300MHz.

First, you need to know **WHEN** and **WHERE** the satellite will be passing over your location. There are several commercial computer

programs that will tell you. Free programs are Orbitron, and Ham Radio Deluxe. These programs are easily updated with satellite tracking data. But completely free of charge info is online at... <http://www.heavens-above.com> -or- <http://www.amsat.org> Plug in your longitude and latitude coordinates on these sites, and you can access amateur satellite pass information.

The one "absolute" for success is to **open up your squelch**. "Working the Birds" starts off as a process of finding weak signals, so don't expect the satellite to be anywhere as strong enough to

break squelch like your local repeater. Sure, it's a little noisy, but that's part of the process. Noise can also be an aid in locating the satellite because when the frequency starts to exhibit **QUIETING**, that's a sign that you are capturing the satellite!

Improve your HT's stock antenna. For BNC connectors, **Pryme's** AL-800[2] will make the difference. For SMA, the **Diamond** SRH-320a or **Smiley** 270A are good performers. Using an **Arrow** dual-band Yagi or **Elk** log periodic is better. Set up your radio so you can tune for the **Doppler effect**. Start listening **above** the center frequency you

Continued on page 4

Training and Information Net

The primary purpose of this net is to practice net operations similar to those used in actual emergencies. This net will also be used for routine training and traffic handling, as well as local information for the amateur community. In the event of any severe weather, this net will act as the DeSoto County Emergency Net, Providing coordinated emergency communications in response to severe

weather, or any other disaster. Also, severe weather information from the DeSoto County area will be passed on to DeSoto County EMA and the National Weather Service in Memphis.

Date: Every Monday Night

Time: 8:30 P.M. to 9:00 P.M.

Location: 146.910 No Tone

146.91 Simplex if repeater is down

Net control schedule through February.

W5LJD	Denver	1/17/11
KB0ZTX	Ken	1/24/11
KE5NBC	Sam	2/7/11
KE5GYQ	Steve	2/14/11
KF5EQE	Paul	2/21/11
KE5RHM	Jim	2/28/11



Chow line at the Christmas Party

We are on the Web

<http://www.qsl.net/w5gwd/>

Satellites (cont)

will hear the satellite sooner and clearer. When the downlink gets scratchy or fuzzy, tune down 1KHz at a time, and reception should be clearer. With low power, only transmit when you can **clearly** hear the satellite. Follow the signal down in frequency as the pass continues.

Don't hold your whip antenna upright. Held in a vertical position, your transmitted signal is hitting land-based receivers. You need to tilt your HT's antenna so that it is perpendicular to the airborne satellite. The satellite isn't on the ground (which is what HT and vertical antennas were designed for). **TILT IT** about the same amount as the satellite's **ELEVATION**. You'll quickly get the hang of it!

Ideally, we should all be working the satellites in full duplex mode, where we can simultaneously listen to the downlink as we are transmitting. Although this method is preferred, it is not mandatory: Carefully monitor the downlink, and wait for a break in the conversations to announce yourself. Many operators find using headphones helps - especially if working full duplex. Knowing your grid square - and having a grid square map - is a quick way of identifying locations of what you will be hearing. The **ARRL** and **Icom** have Grid square maps.

The **"three P's"** for working amateur satellites: **preparation**, **planning**, and **patience**. Not every pass is workable with an HT — so don't go after the 10 degree passes. Pick your passes, working ones you know will give you the best chance.

When you hear others, try to find a break in the action, and announce your callsign phonetically, grid square, and op mode:

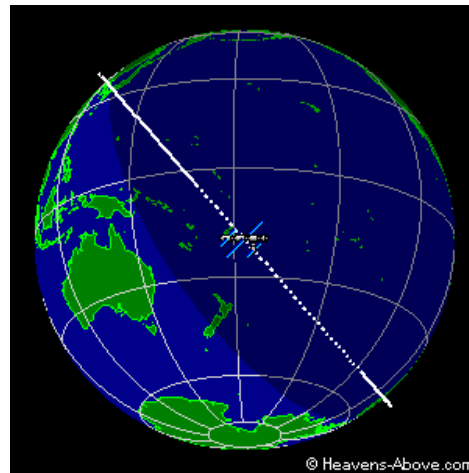
"WHISKEY FIVE GOLF WHISKEY DELTA, EM - FIVE FOUR, handheld."

Some hams record their sessions for later review. Even if you don't make contacts, it helps to familiarize yourself to the callsigns, voices and personalities of the other operators.

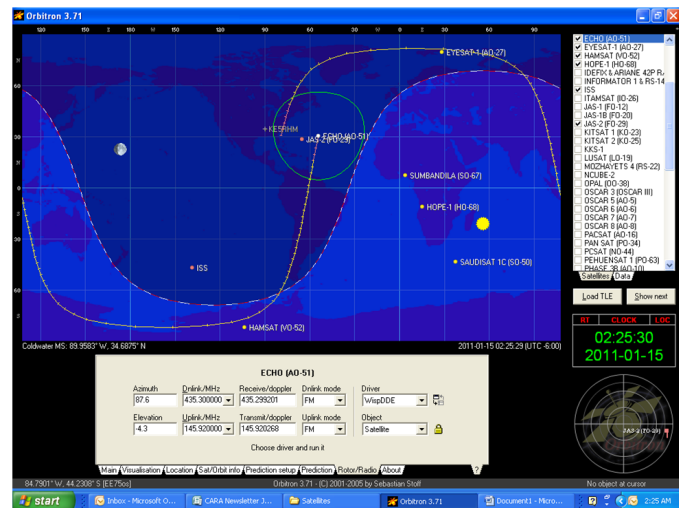
This is an example of how you can program a Yaesu FT-60 for **AO-51**:

Ch #	Name	TX Freq*	CTCSS	RX Freq	CTCSS
60	AO-51	145.920	67.0	435.311	None
61	AO51 -2	145.920	67.0	435.310	None
62	AO51 -1	145.920	67.0	435.305	None
63	AO51-MID	145.920	67.0	435.300	None
64	AO51 +1	145.920	67.0	435.295	None
65	AO51 +2	145.920	67.0	435.290	None

I made reference earlier to the Doppler effect. This is a phenomenon that all of us will recognize in a different situation. Imagine you're waiting at a railway crossing. A train passes at high speed, blowing its horn. As the train passes you, the pitch of the horn appears lower than when it was approaching. That apparent shift in frequency is Doppler shifting caused by the relative speed of the train to you shortening, then later lengthening the wavelength of the sound as seen by the observer. On board the train, the pitch of the horn does not alter, but the pitch of the bells at the crossing does. When a satellite passes overhead, the transmitted and received signals are affected in a similar way. With the satellite passing at 27,000 km/h or more, a signal at 436 MHz can be shifted by up to 10 kHz from its actual transmitted frequency. Some satellites are designed with this in mind, and have AFC (Automatic Frequency Control) circuits to partially compensate for Doppler shift. Doppler shift is only significant for FM satellites on 70cm or higher bands. On 2m, the 3 kHz Doppler shift can usually be accommodated by an ordinary FM receiver, provided it's on the correct frequency. For SSB/CW operation, Doppler shift is significant on all satellites.



Tracking of International Space Station on Heavens-Above.com



Satellite tracking program by Orbitron

These are a couple of the better links for information on working and tracking the Birds.

<http://www.heavens-above.com/>

<http://www.amsat.org/amsat-new/index.php>



**Chickasaw Amateur Radio
Association**

**Chickasaw Amateur Radio
Association
P.O. Box 2
Hernando, MS 38632**

***When All Else Fails Amateur
Radio is There.***

We are on the Web

<http://www.qsl.net/w5gwd/>

Become a member of CARA membership applications are on our website. If you have any questions concerning membership, you can contact any of the Board members or E-mail the reflector at cara-ms@yahoo.com
Web Site: <http://www.qsl.net/w5gwd>

DUES RATES PER CALENDAR YEAR (JANUARY 1 – DECEMBER 31)
\$30.00 - MEMBERSHIP DUES
Make checks payable to:
Chickasaw Amateur Radio Association (C.A.R.A.)
P.O. Box 2
Hernando, MS 38632

Nets

Mississippi Nets

Magnolia Section Net 3863 6:00 A.M. Mon-Fri
Magnolia Section Net 3862 7:00 A.M. Sat-Sun
Mississippi Phone Net 3862 5:30 P.M. Daily
Mississippi Slow Net (CW) 3543 7:00 P.M. Mon-Fri

Memphis & North Mississippi Area Nets

- **Chickasaw Amateur Radio Association (CARA) 146.91 8:30 P.M. Every Monday**
- OBARC Net 147.255 (79.7) 8:00 P.M. Tuesday
- Panola County ARES Net 146.610 (107.2) 8:30 P.M. Wednesday
- Mid-South Barefooted Bullfrog net 146.535 7:30p Daily
- Delta Club Traffic and Information Net 146.820-(107.2) 8:00p Daily
- Secret Service Net 224.780- 8:30p Monday **Repeater is down**
- Elmer Net 147.030+(107.2) 9:00p Monday
- The Short Winded Net 146.850- 8:30p Tuesday
- Med/MERS Net 146.730-(107.2) 12:00p Wednesday
- Six Meter Tech Net 53.01- 8:30p Wednesday
- The 440 Net 443.200+(107.2Hz) 9:00p Wednesday
- Two meter single Sideband Net 144.260 USB 8:30p Thursday
- ARES Training Net 146.880-(107.2) 9:00p 2nd & 4th Thursday

Newsletter Editor: Jim Sanders KE5RHM. I am soliciting any photos articles or any information you would like to share. Please include names and callsigns of people in the photographs with a brief description of what is happening. If you did a radio project or made some interesting contacts sent it to me. Send all photos and articles to ke5rhm@arrl.net.

Monthly CARA Meeting

C.A.R.A meets every 3rd Monday of the Month. Meeting will be at the LEWISBURG FIRE DEPARTMENT, 8771 Byhalia Rd, Olive Branch, MS 38654. Hope to see you there.

Chickasaw Amateur Radio Association

P.O. Box 2
Hernando, MS 38632

2011 Membership Application Form

Application Date ___/___/___

Call sign _____ Class of License _____ Exp Date ___/___/___

Name _____

Address _____

City _____ State _____ Zip _____

Home Phone (____) _____ Publish? Yes ___ No ___

Cell (____) _____ Publish? Yes ___ No ___

Work Phone (____) _____ E-mail _____

Date of your original Amateur License ___/___/___

ARRL Member Yes ___ No ___ Life ___

Signature _____ Date ___/___/___

DUES RATES PER CALENDAR YEAR (JANUARY 1 – DECEMBER 31)

\$30.00 - MEMBERSHIP DUES

Make checks payable to:

Chickasaw Amateur Radio Association (C.A.R.A.)

P.O. Box 2

Hernando, MS 38632

If you have any questions concerning membership, you can contact Timmy Jones N5PYQ@arrl.net 901.870.2849 or Jim Sanders KE5RHM@arrl.net

Office Use Only:

Date received: ___/___/___

Cash/Check: # _____

Date Deposited: ___/___/___ By: _____

Input: _____ Website: _____

