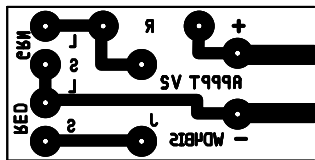
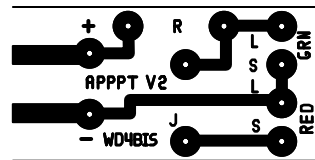


Artwork Mirror Image
(Flipped Horizontal)

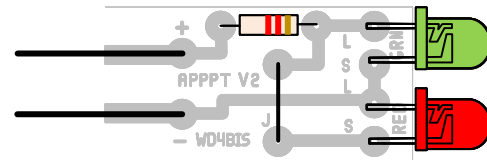


Artwork

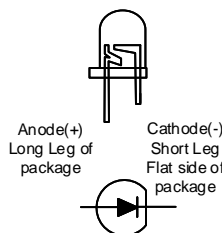
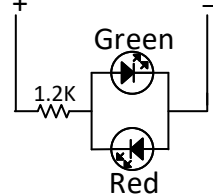


Component Placement

Probe Wires



Probe Wires



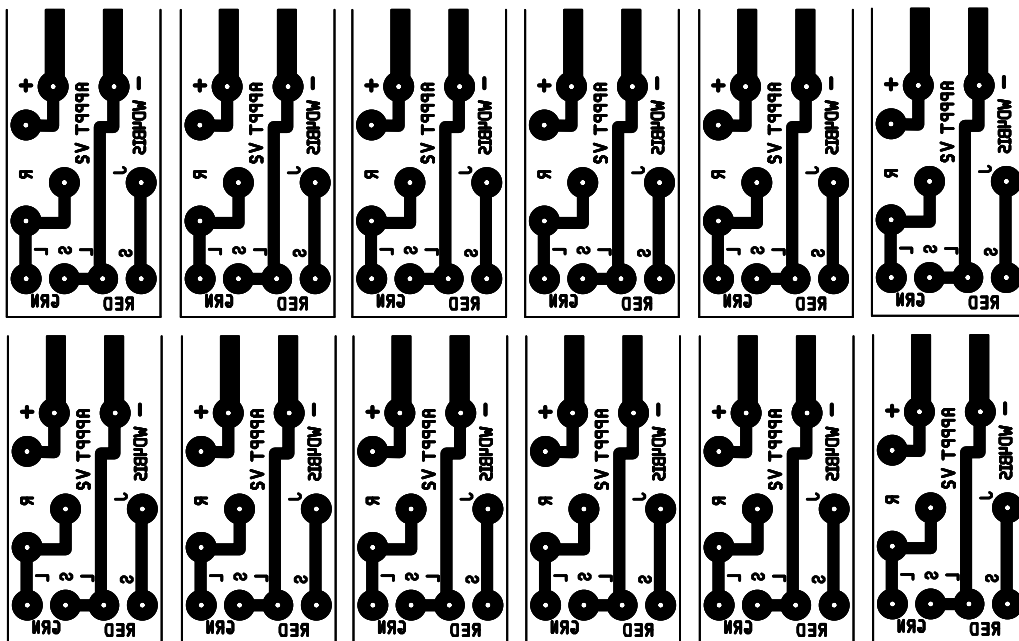
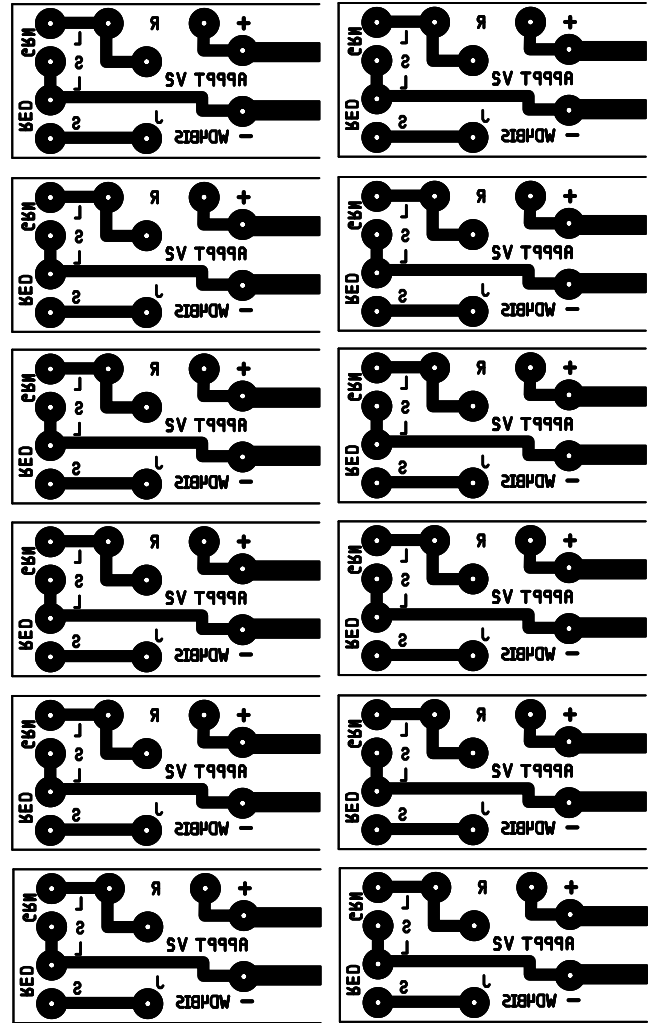
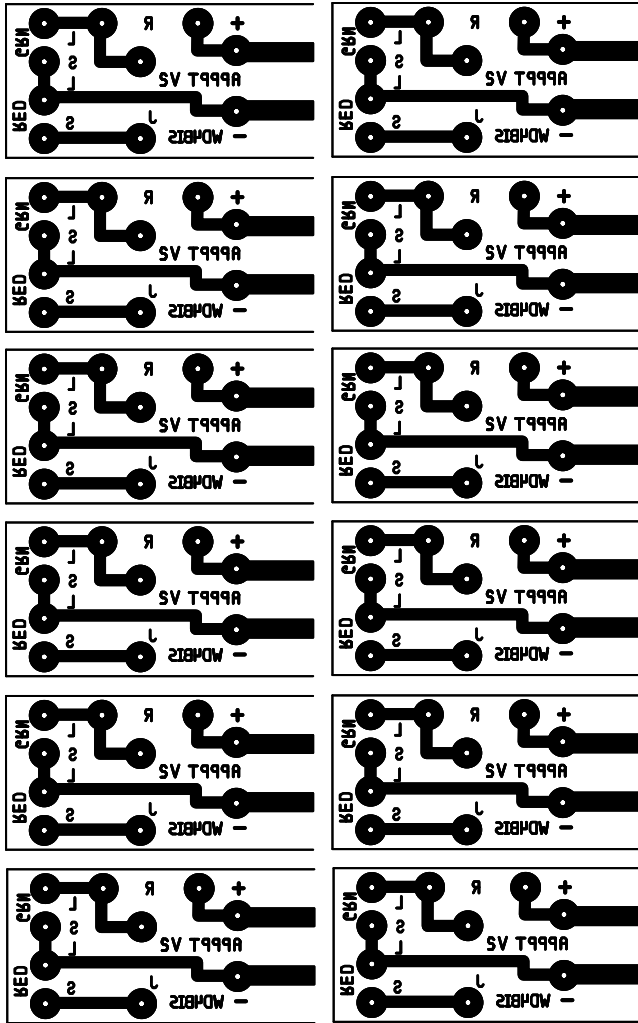
Date:	Revision/Addition/ Note	By:
Jan 21, 2019	Initial Drawing, V.2 simplified from V.1	GSC
Jan 22, 2019	I wanted a quick soldering project for the up-coming Mentor Fest. The project needed to be Simple, Fast, and cheap as I am going to fund the initial cost. But also wanted a useful gadget. This will check the polarity of an 12V active Power Pole pair. Green Polarity is correct, Red Polarity is reversed.	GSC
Jan 22, 2019	Played with various types of "Probe Wire" So far the paperclip wire has worked the best.	GSC
Jan 22, 2019	Could have done this more efficiently with dual color LEDs and no jumper, but wanted as many solder joints as possible.	GSC
Jan 22, 2019	Can place 12 copies on 4"x6" copper blanks	GSC

Drawn By: Gerald Crenshaw WD4BIS	Date: Jan 21, 2019
Designed By: Gerald Crenshaw WD4BIS	Date: Jan 21, 2019
Checked By: Janet Crenshaw WB9ZPH	Date: Jan 21, 2019

From the bench of: Amateur Radio Station WD4BIS	Page 1 of 1
Title: Anderson Power Pole Polarity Test,V2	Scale:

Drawn Text
ABCDEFGHIJKLMN OPQRSTUVWXYZ
001122334455667788 /+-. IN OUT WD4BIS

Print Check
.5"x.5"



Print to HP
 LaserJet
 P3005, Staples
 Color Laser
 Paper, SKU
 633215
 Paper/Quality
 Pro Res 1200
 DPI
 Heat press,
 300 degrees F
 for 150
 seconds. (2.5
 min.)