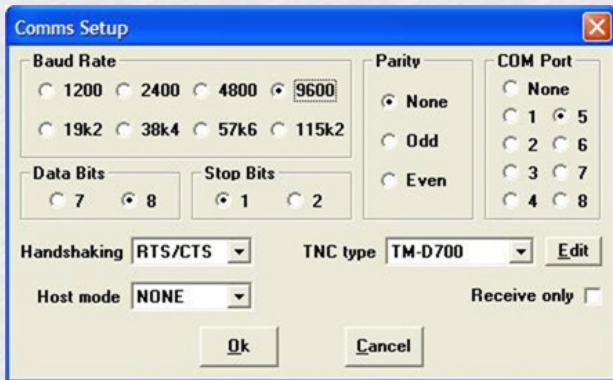


UI-View32 Comms Setup

Screen shot of AJOC's setup



The Comms Setup is accessed via the "Setup" option at the top of the UI-View32 screen.

This setup is used to interface with a Kenwood TM-D700 using the TM-D700's internal modem.

The GPS receiver is plugged directly into the TM-D700's GPS port and the computer is connected to the TM-D700's 9-pin Comm Port.