

rope elevator

by [vernors](#) on October 3, 2007

Table of Contents

intro: rope elevator	2
step 1: marking	2
step 2: marking knot	2
step 3: 8 knot and reknot	3
Video	3
step 4: making it work	4
Related Instructables	4
Advertisements	4
Customized Instructable T-shirts	4
Comments	4

intro: rope elevator

How to make an elevator by using rope. I am not liable for any stupid thing you do like any injuries or even death. (you will probably die if you got a rope too weak and if you made it really high).

first get rope. for length go and measure the height you want it and multiply it by 4. for its strength you can buy a rope that can withstand your weight or if you have rope I suggest making it and testing it.
this is my first instructable so tell me what you think



Image Notes

1. tree limb and rope

step 1: marking

fold the rope in half and mark the middle.

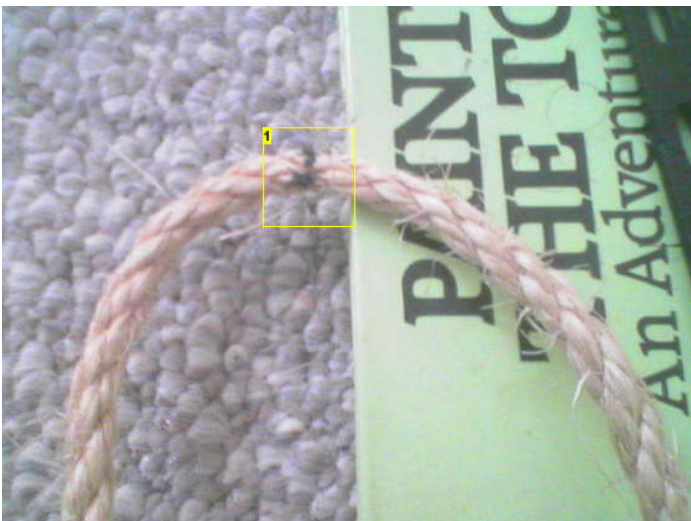


Image Notes

1. middle

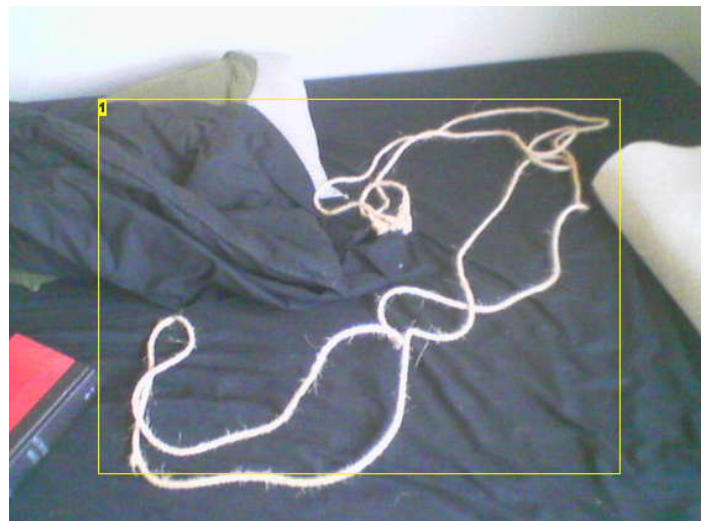


Image Notes

1. this the rope I used but it was a lot longer

step 2: marking knot

take the rope and loop it through your belt holes. make sure the middle of the rope is in the back. wrap it around and cross the rope in the front. mark it where it crosses



Image Notes

1. were it crossed and then marked

step 3: 8 knot and rekn

make an 8 knot and bring the knot down to the marks you just made then take hte othre end of the rope and retie. this video should help

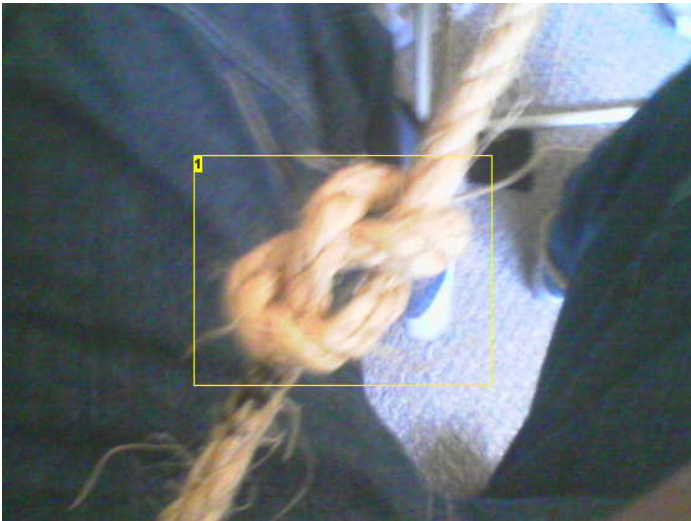


Image Notes

1. beginning of 8 knot



Image Notes

1. end of 8 knot after retie

step 4: making it work

take the to lengths of rope and put them over a tree branch or something and pull on the rope.



Image Notes

1. tree limb and rope

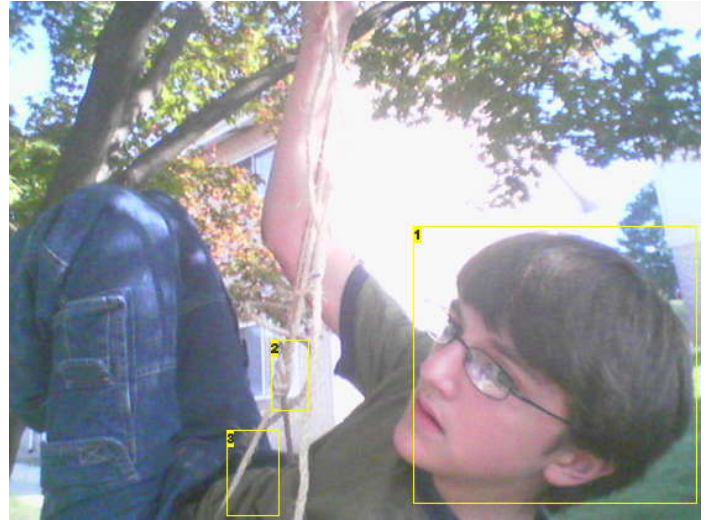


Image Notes

1. me
2. 8 knot
3. rope wrapped around waist

Related Instructables



Simple Elevator Hacking by epic59



Spartan Shield by masterochicken



paper towel rope by ilikefireworks



Build Your Own Tall Bike Without Welding by TimAnderson



Canoe/Kayak lifting Configuration by carlosdreyfus



The Climbing Chair by rouss



Monarch Butterfly Walkalong Glider by walkalongaviation



Bed Sheet Escape Rope by jesse.hensel



Comments

23 comments [Add Comment](#)



crapflinger says:

i would suggest NOT using this method very often on a tree that you'd like to keep alive...and i'd also suggest never using the same rope twice for it (and definitely DO NOT USE nylon rope for heaven's sake)...the friction across teh branch will be immense and you can seriously damage a tree this way....also...you'll burn right through nylon rope doing this

Oct 4, 2007. 6:01 AM [REPLY](#)



akimbo m says:
Think about the TREES!

Oct 4, 2007. 6:10 AM [REPLY](#)

PETTA

People for the Ethical Treatment of Tree and Animals...
"For all living things sentient or non-sentient"



pmac93 says:
PETA

Jul 25, 2008. 4:15 PM [REPLY](#)

People for the Eating of Tasty Animals

:D



twisted says:
PHSSSSS!!!! LOL the tree will be fine. But, even if its not, its just a tree.

Oct 4, 2007. 10:22 AM [REPLY](#)

PATH
People Against Tree Huggers.



twenglish1 says:
yah i wanna join to

Aug 6, 2008. 2:52 PM [REPLY](#)



i kill stuffs says:
can i join path?!?!?

Nov 26, 2007. 4:33 PM [REPLY](#)



crapflinger says:
i'm not a tree hugger...but the attitude you're showing is why the forests on this planet are being depleted....it's never "just a tree"...it's some animal's home, it's shade, it's a CO2 scrubber, it prevents soil erosion....start thinking about things other than yourself for a day

Oct 4, 2007. 10:46 AM [REPLY](#)



twenglish1 says:
what...tree hugger

Aug 6, 2008. 2:53 PM [REPLY](#)



THEULTIMATESNIPER says:
somebodys a tree hugger

Aug 6, 2008. 12:13 PM [REPLY](#)



i kill stuffs says:
and i shot a co2 pistol and it lets out co2 so there tree hugger

Nov 26, 2007. 4:33 PM [REPLY](#)



i kill stuffs says:
cough*treehugger*cough

Nov 26, 2007. 4:30 PM [REPLY](#)



blakdragon19 says:
there's a difference between a treehugger and someone who is actually smart enough to understand the importance of something. just because you are ignorant and never consider the consequences of your actions doesn't mean you have to let the whole world know it AND make us smart folks sorry to be labeled under the same species as you. 'Crapflinger' (hehe) is right, trees ARE that important. and 'i kill stuffs' that co2 comment was just stupid. why the hell would anyone be proud of contributing to global warming? think before you say something stupid, and if you have to do it, say it to your dog, cat, doll, or imaginary friend. dont say it here.

Sep 14, 2008. 5:22 PM [REPLY](#)



Ramnosity says:
One little rope mark will not kill a tree. I have had a pulley attached to a tree branch used for something like this for 5 years and the tree and even the branch is still very much alive.

Oct 4, 2007. 10:58 AM [REPLY](#)



crapflinger says:
you said the magic word! pulley!

Oct 4, 2007. 11:20 AM [REPLY](#)

this idea doesn't use a pulley....they just loop the rope over a branch and pull....

of course doing this once won't kill the tree....but (like i said in the first reply)...if you CONTINUALLY use this method to climb the same tree from the same branch....you will cause damage to the tree

also...even a small gap in the bark of a tree can allow parrasites and disease into the tree



8bit says:

I take it you don't get out into nature often. . . only trees that are already dying get killed by a nick in one of their limbs.

Oct 14, 2008. 2:10 PM [REPLY](#)



pikathebudgie1234 says:

let me join path!also my swins and elevators will be posted on youtube and then you watch.(my user name is pikathebudgie1234)

Jul 17, 2008. 11:29 AM [REPLY](#)



jakezcop says:

dude ur that lame u cant even climb a tree? but its still cool i'm probably gonna try this, and no i dont care about the trees we got plenty of em'.

Jun 15, 2008. 10:44 AM [REPLY](#)



vernors says:

i can i made it to get to places that you cant climb to

Jun 16, 2008. 5:11 AM [REPLY](#)



themasterpyro says:

use a rotten branch come on it then you can collect the insurance

Nov 6, 2007. 6:49 PM [REPLY](#)



dchall8 says:

I think I'm going to agree and disagree with just about everyone.

First of all: SAFETY FIRST. I realize that safety is not a prerequisite for an Instructable, but in this case, GET A REAL ROPE FOR PETE'S SAKE.

Secondly: Yes it is not just a tree, but climbing trees with ropes is not normally a problem. Check out treeclimbing.com for more information about trees, climbing and ropes.

Oct 10, 2007. 9:11 AM [REPLY](#)



vernors says:

i had the rope lying around and i need to get pictures so i decided to use this one
i used this instrucable to help work on a tree house and it was only temporary.

Oct 9, 2007. 5:45 PM [REPLY](#)



gmoon says:

What is that, a 1/4 sisal rope?

I wouldn't trust my body to anything with a breaking strength less than ten times my weight. Why? You can easily generate a force several times your weight in a short (2 ft.) fall. It's the dynamic forces that will kill you.

Check this out: manila and sisal rope specs -- the working limit is 1/10 the breaking strength. Their words: *Never exceed the Working Load Limit.* Working Load Limit for 1/4 in. sisal: 48 lbs.

Re: crapfinger's points --

He's a climber, (as am I) and since we often use the same trees over and over again as climbing anchors, we treat trees with respect. A single tree (or limb) might be the only viable top-rope anchor so we would NEVER do this.

I've seen climbs that became 'unriggable' because the anchor tree died from abuse.

Do this often and you WILL 'girdle' the limb, and it WILL die. Do I care if you do this to your own tree? Naw.

But don't do at the crag or on public land, or things might get nasty. Not a threat, just a warning that when you destroy things that belong to everyone, prepare to face consequences...

Oct 4, 2007. 11:45 AM [REPLY](#)



qtm says:

"for its strength you can by a rope that can with stand your weight or if you have rope i suggest making it and testing it."

This is EXTREMELY dangerous. Simple physics says if you fall on the rope, you will generate forces several times your weight. If you weigh 100 lbs and just bounce lightly on the rope, you can easily put 400lbs of force on the rope. A certified climbing rope can hold in excess of 22KN, or 5000lbs of force.

Do NOT try this with anything less than a real climbing rope.

As CF says, this is extremely damaging to the tree, and damaging to the rope as well. Use the first rope to pull up block tackle with your climbing rope attached and haul up on the block tackle instead of over the branch.

Do not just loop it around your waist; if your belt loops rip, the rope will slip up to your chest. This is extremely painful and can cause suffocation... that is if you don't let go of the rope and fall. If you don't have a climbing harness, then make yourself a "swiss seat" out of the rope.

Don't just haul up with the rope, get a proper belay device, or use prussik. That way if you do slip, you're not going to fall and kill yourself.

Oct 4, 2007. 10:25 AM [REPLY](#)