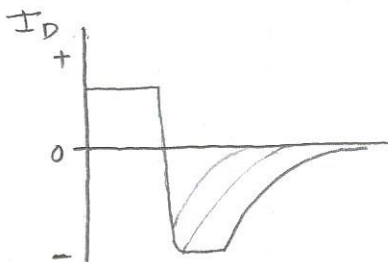
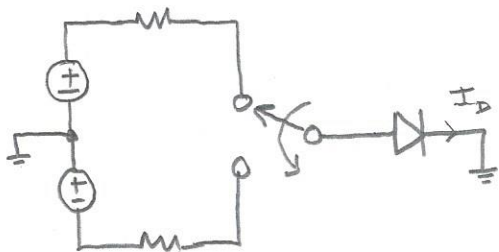


DIODE REVERSE RECOVERY TIME

IN2AEW
#201

- WHEN A DIODE IS SWITCHED FROM FORWARD TO REVERSE BIAS, A REVERSE CURRENT FLOWS FOR A SHORT TIME.

↑ I.E. IT DOESN'T BLOCK LIKE A DIODE!



- DUE TO STORED CHARGE (SPACE CHARGE) IN THE JUNCTION WHICH TAKES TIME TO REMOVE & RECOMBINE
- REVERSE RECOVERY TIMES CAN RANGE FROM A FEW ns OR LESS, TO A FEW μ s OR MORE - DEPENDENT ON THE DEVICE & CURRENT LEVELS

↓ - CAN BE A SIGNIFICANT SOURCE OF LOSS IN SWITCHING REGULATORS

↑ - CAN BE BENEFICIAL IN SOME SIGNAL SWITCHING APPLICATIONS (SEE VIDEO ON PIN DIODES & RF SWITCHING)

QUICK MEASUREMENT SETUP

