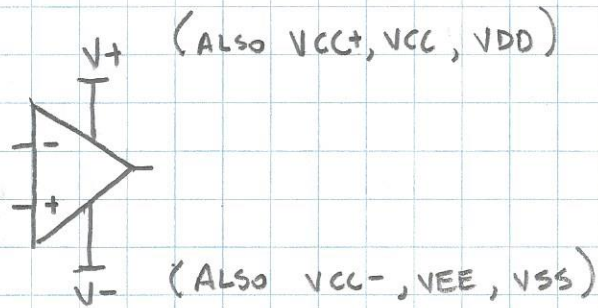


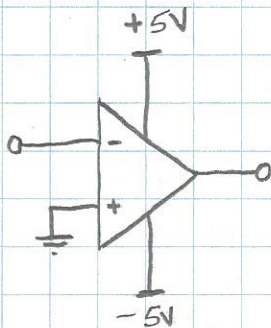
W2AEW

OP AMP POWER SUPPLY CONSIDERATIONS:

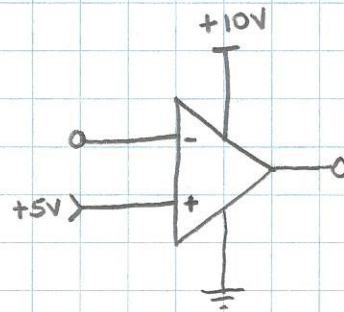
SPLIT SUPPLY OR SINGLE SUPPLY?



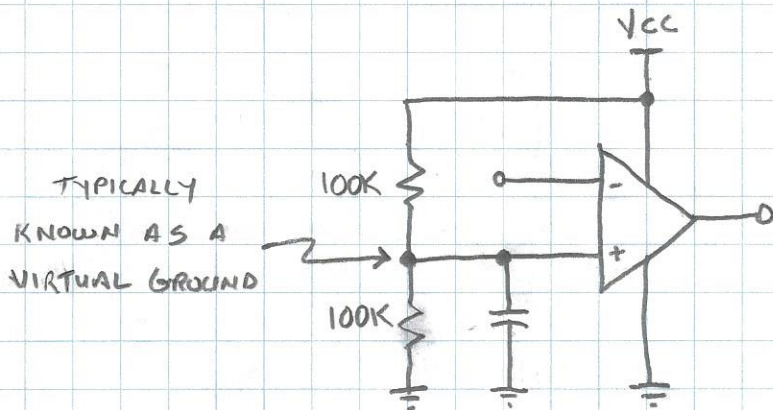
* THE OP AMP DOESN'T CARE!



SPLIT SUPPLY



SINGLE SUPPLY

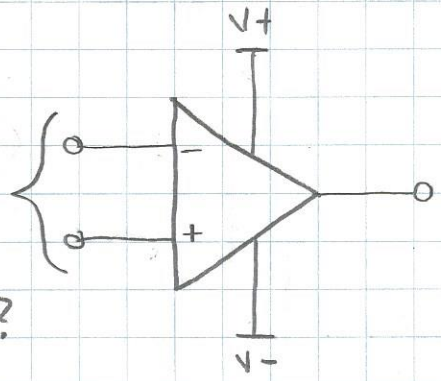


WHY?

WZAEW

INPUT & OUTPUT VOLTAGE RANGE

How close can the inputs get to $V+$ or $V-$ and still operate properly?



How close to $V+$ or $V-$ can the output be driven?

- IF THE INPUTS OR OUTPUT CAN'T GET CLOSE TO THE SUPPLY RAILS, THEN THE OP AMP IS USUALLY SPEC'D WITH SPLIT-SUPPLIES.

- BUT, IT CAN BE USED WITH A SINGLE SUPPLY!

YOU JUST HAVE TO KEEP THE I/O'S WITHIN THE ALLOWED VOLTAGE RANGE.

