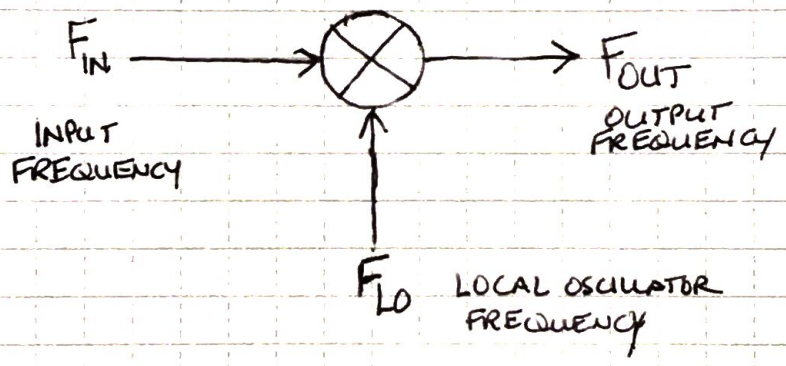


SUPER HETERODYNE RECEIVER BASICS

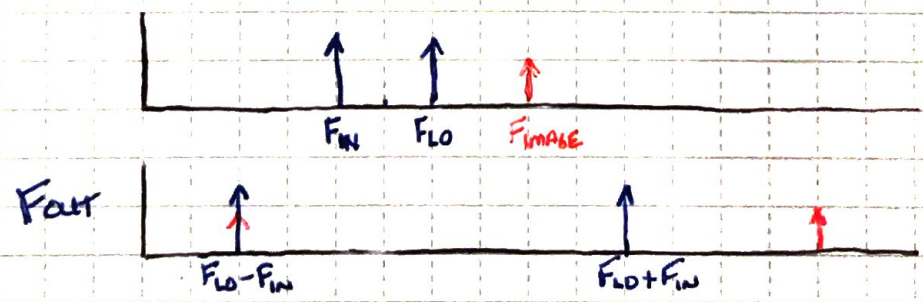
TWO KEY ELEMENTS

- ① FREQUENCY CONVERSION (MIXING)
- ② FILTERING (IF PROCESSING)

OVERVIEW OF MIXERS



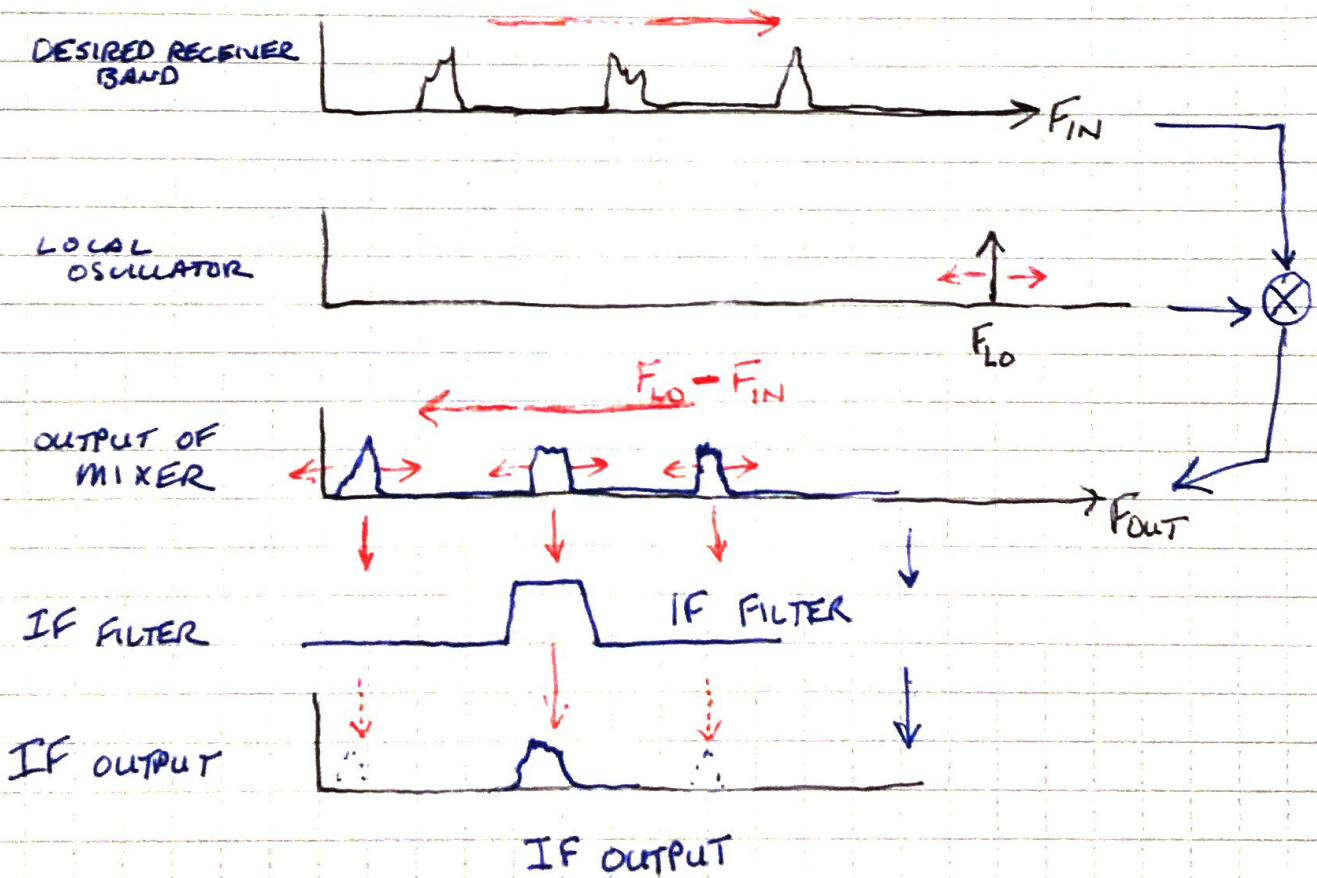
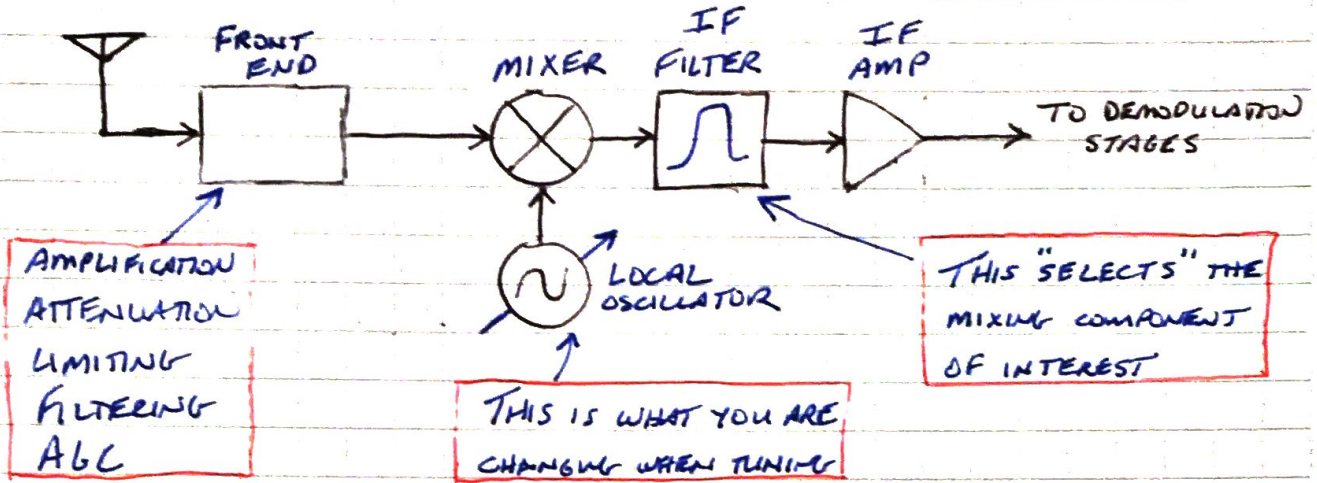
$F_{OUT} =$ SUM OF $F_{IN} + F_{LO}$
AND
DIFFERENCE OF $F_{IN} - F_{LO}$ & $F_{LO} - F_{IN}$



1 SQUARE =

THE SUPER-HETERODYNE Rx

W2AEW
②



1 SQUARE =