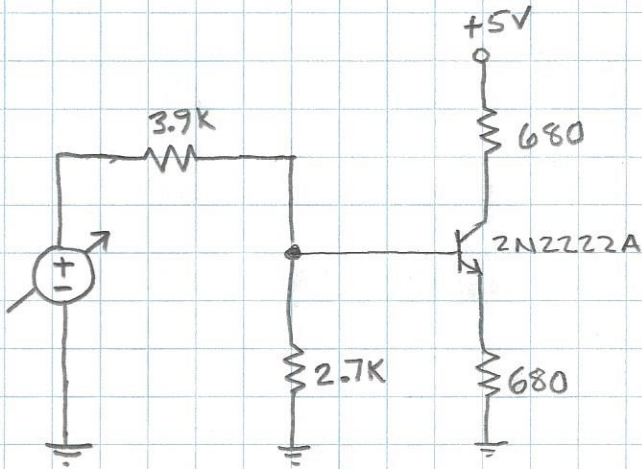


DC OPERATING POINT (QUIESCENT POINT) OF A BJT AMPLIFIER...

... AND HOW IT DETERMINES THE
"CLASS" OF OPERATION



3 OPERATING REGIONS

- CUTOFF
- ACTIVE
- SATURATION

W2AEW

BIPOLAR TRANSISTOR AMPLIFIER

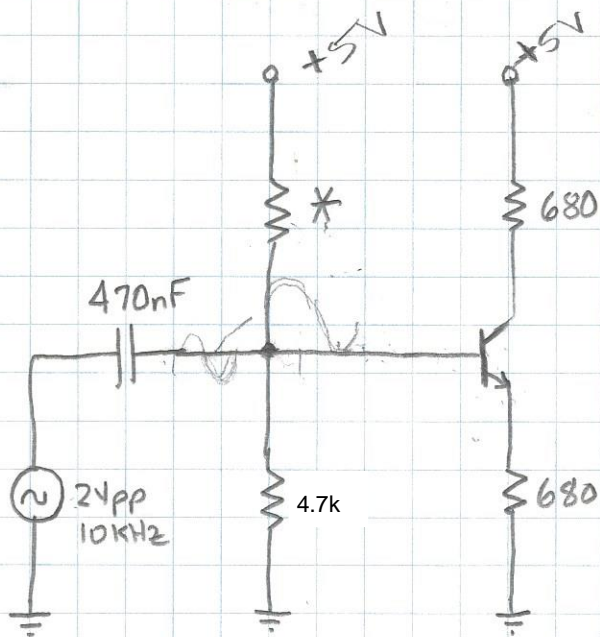
"CLASS" OF OPERATION

CLASS A : DEVICE IS "ON" OR ACTIVE REGION DURING THE ENTIRE WAVEFORM (360°)

CLASS B : DEVICE IS ON FOR $\frac{1}{2}$ CYCLE (180°)

CLASS C : DEVICE IS ON FOR $< \frac{1}{2}$ CYCLE ($< 180^\circ$)

CLASS AB : BETWEEN A & B $180 \leftrightarrow 360^\circ$



WZAEW