

The WS68 set in background surrounded by a number of A510s (pairs of boxes) together with various test appendages.

PHOTOGRAPH 1



Soldier on ground
A 510 on his chest
Whip, on ball joint, turned upwards

PHOTOGRAPH 2



A 510 fitted on Standard Metal Carrier (as used in Malaya) with other gear. Arranged as demonstration - not normal position of A 510.

PHOTOGRAPH 3

See also Photograph 5



Soldier on left with WS68 set together with pack on standard metal carrier.

Soldier on right with A510 on chest and pack on back.

Note: Soldier on left is young British National Serviceman.

On right a Gurkha soldier.

PHOTOGRAPH 4



The two A510 cases mounted on top of standard metal carrier in current use in Malaya - demonstration of versatility of A 510, not normal way of carrying.

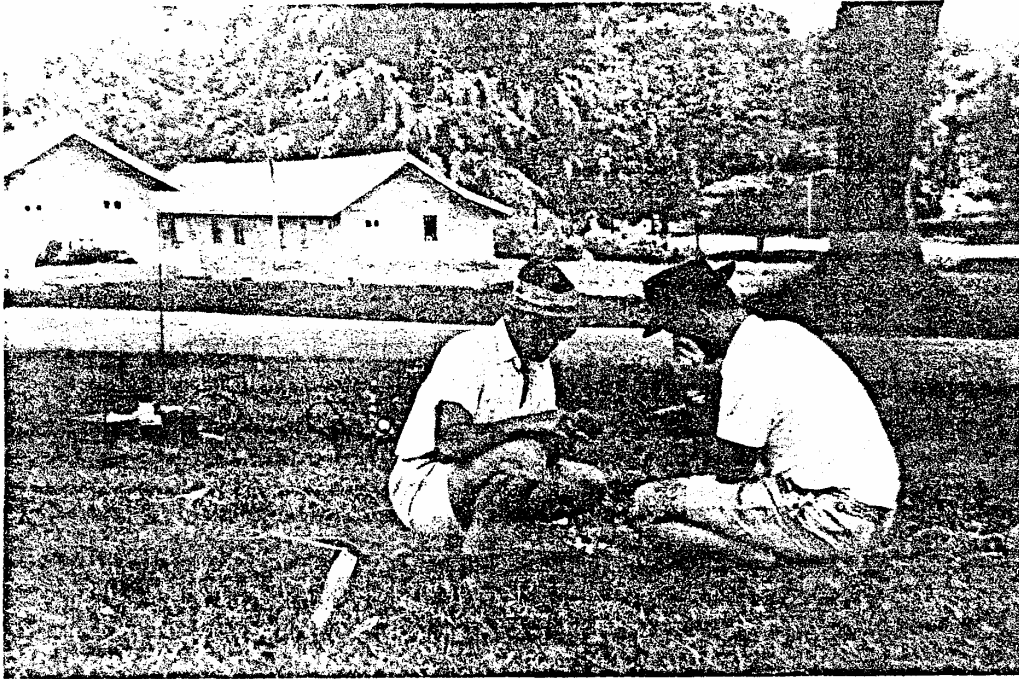
PHOTOGRAPH 5



DEAN & CURRAN compare notes at Farelf
Training Centre, Malaya.

Note: although in a "safe" area, side arms were
worn at all times.

Photograph added 1978



Lt. Col. Don Small and Ken Dean in grounds of
Tanglin Barracks, Singapore.

Photograph added 1978



DEAN:

(with pack of WS78 plus other gear on metal carrier, 70 lbs total).

"Why don't you get a REAL Soldier if you want to take a photograph".

REAL SOLDIERS:

"We want you to know how heavy it is".

Photograph added 1978