

**FROM THE PRESIDENT**

Most of the pieces are finally in place to complete our repeater project. The additional frequency assigned is 444.9625 Scott is still waiting for parts to re-crystal the repeater we purchased and to upgrade Lowmiller Road. We have the boxes for the Go Kits and Dave and Bill have installed the dual band radios and power supplies in them. We've ordered two portable generators. We're still searching for batteries and the best configuration for wiring them.

Congratulations to Gary Amato, KB8HTU, from the Triangle Club who was appointed EC for Columbiana County. Club members have been participating in activities for the upcoming nuclear power plant exercise. It's not too late to assist with the drill on June 18, 19, or 20 at various locations around the county. Let Gary know if you are interested.



SAARA will be operating under the club call, K8BTP, during 2012 Field Day on June 23 & 24, co-located with LAARA at the Columbiana County EMA in Lisbon. We need your help and hope you can sign up to work for a few hours. We'll have food and snacks throughout the day. Dave, N8GOB, is keeping the list of who is working. We plan to have a Go Kit there so you can try one

out.

We have changed our next meeting to Thursday, July 12 at 6pm at Della Walker House. It will be a SAARA family picnic and strictly social (unless there is time-sensitive info to address). Bring a covered dish. We'll eat around 6:30pm. Enter at our rear drive at 1557 Cleveland Street. SAARA will provide the burgers, dogs, fixings and beverages. I need a head count by July 8.

Welcome to new members Chuck, N8PLM, and Gloria, N8PLN, Lazear.

On a sad note, we extend our sympathy to the families of: Kenneth G. Theiss, KC8TQJ, silent key, who died on April 23; Donald P. Dodson, father of Darren Dodson, KD8NAQ, who died on May 26; and Lois Cox, mother of Edie Dillard from the EMA, who died on June 7.

Finally, for those travelling this summer, go safely, be well, and have fun.

73

Ginger, KC8ZFK

PS – Al, AB8AA, is offering an EC class on Saturdays from 9am-4pm on October 20/27 and November 3/10 at ITT Tech in Youngstown. Prerequisites are IS 100b and 700. You must register at least a month in advance, buy the book, and study before coming to class. Class is free but there is a \$15 fee for testing on November 10.

JULY'S MEETING - JULY 12, 6:00 PM
FAMILY POT LUCK
@ DELLA WALKER HOUSE
SAARA NORMALLY MEETS THE FIRST
THURSDAY OF THE MONTH
6:30 P.M.
AT THE SALEM LIBRARY
821 EAST STATE ST., SALEM, OH

ANTENNAS, ANTENNAS, ANTENNAS

It appears that at one time or other we, as amateur radio operators, will run into a problem of some kind with an antenna. No matter how careful one is at installing, something will go wrong somewhere in the future. For several years we have enjoyed trouble-free problems with our antennas. Then, out of nowhere the

antenna eater appeared.

First, it was the HF antenna. It was struck by lightning. That finished it off. It was beyond repair. With the installation of a new one, the coax working very well, and with the silly idea that my troubles were over, I was once again enjoying amateur radio. What do you know? All at once during a storm, I happened to look out our back window and noticed that we were having a down burst. It seems that in that down burst the antenna eater was in its mist, as it destroyed our new hf antenna.

Since our insurance has a \$500.00 deductible, it will not cover it. How nice that is! The next week we had another storm that broke our two-meter antenna in half.

One can only guess at the joy we were having over this. Now we had two antennas in the scrap pile. Again, the insurance would not cover it. Jumping up and down with glee on having to purchase two more antennas, we set about the task once again.

After checking out several two-meter antennas, we picked one that looked really good and would take the beating that we were enjoying up here as of late. Not only did we get that antenna but new coax as well. Why take a chance on the coax being bad, as I did not want to take it down again.

While still looking for an HF antenna that would suit our needs up here on top of the hill, I began to use an Outbacker that we had here in our attached garage. It has been doing well, but not like the one we had outside. It was inside, surrounded by all types of things in the garage plus the car.

Would you like to guess what happened next? We had another windstorm up here, and our new antenna was not doing its thing again. The antenna eater was busy once again. The SWR on that new antenna was 11 to 1. All I was able to say was OH JOY! I get to take this one down. While once again looking at antennas, I wanted to be on the air while looking, so I was able to take a mag mount that we used to have on the car, and I ran some old coax that we had to this old mag mount, and placed it on a metal drip pan in the garage. Much to my surprise, it worked almost as well as the one that was not longer working.

So, I said to myself, self why not wait a bit before you take the new antenna down and see how this will work out. After about two months or so it was doing fine. I started asking all kinds of questions about what may have happened to our new antenna. Now, the strange thing is the SWR went from 11 to 1 to 7 to 1. I had a fun time thinking about that. While thinking about it, and the smoke was coming out of several places from the brain being out of use, I figured that I would talk to other hams that were a lot more knowledgeable than I am.

Well, what do you know? I got as many answers as the ones with whom I talked, all of them different. When at the Dayton Hamvention, I talked with a representative of the maker of the antenna and got some more ideas as to the problem. We had not taken the antenna down to see what was wrong with it. After we got home, I rechecked the antenna and the SWR was 1 to 1. Wow, that is what it was when it was installed. Now, the good part is that it would go up at night to 7 to 1 but in the daytime it was 1 to 1.

While trying to figure that out, the antenna suddenly stayed at 1 to 1 no matter what was happening. Rain, wind, night or day did not affect it at

Continued page 2



ANTENNAS - CONTINUED FROM PAGE 1

all. As of right now it is still 1 to 1. After all this, I guess I am sure of one thing, and that is we do not understand antennas at all. The Outbacker, without radials, will almost equal the one with radials that was outside and up a lot higher. The old mag mount is almost as good as the one up in the air 50 feet. It appears that what will work in one place may not work in another. I know this, if anything goes wrong with the outside antennas we will be using whatever is inside, and hope that they work almost as well.

Take care and have fun.
73 Bill KB8MNE

**EC001 CLASS STARTING OCTOBER 6
AT ITT,
MERIDIAN RD., AUSTINTOWN
9:00 A.M.**

PREREQUISITE:

**PROOF OF FEMA CLASSES
IS-100.B & IS-700**

PRE-REGISTRATION A MUST!

**BOOKS FOR THE CLASS MAY BE
PURCHASED ONLINE OR
CONTACT AL AB8AA TO REGISTER
AND PURCHASE A BOOK
AB8AA@ARRL.NET**

**W8SGT IS FACILITATING AN HF NET
EVERY TUESDAY AT 1800 (6:00 PM)
LOCAL TIME.**

**THE NET IS RUN FROM THE
STATE OF OHIO EOC ON THE OHIO
ARES ADMIN**

FREQUENCY 3875 KHZ LSB.

ALL ARE WELCOME TO CHECK IN.

--

**73 DE MATT WELCH W8DEC
OHIO SECTION EMERGENCY COORDINATOR
ARRL - THE NATIONAL ASSOCIATION FOR
AMATEUR RADIO™
W8DEC@ARRL.NET
440-585-7388 - WORK
440-336-0295 - CELLULAR**

**+ ARRL FIELD DAY: NOTIFY YOUR NEIGHBORS
ABOUT ARRL FIELD DAY, JUNE 23-24**



It's not too late to get information about your ARRL Field Day activities out to the public. ARRL Field Day -- the largest on-the-air operating event -- is the one of the best opportunities of the year for showing our Amateur Radio capabilities to the public. ARRL Media and Public Relations Manager Allen Pitts, W1AGP, notes that the ARRL has made many media materials available for local use: "Our visibility to the public is important in

antenna, band preservation and texting issues, so we encourage you to use this opportunity to showcase what Amateur Radio can do," he said. Download an audio PSA that can air on local radio stations. Send out a press release or invite your local officials to your Field Day site. Send high-definition video files suitable for airing to your local television stations.



**FORECASTERS CALLING FOR NEAR-AVERAGE
HURRICANE SEASON.**

Forecasters with the National Hurricane Center (NHC) are calling for a "near-normal" Atlantic hurricane season for 2012. In its initial outlook for the 2012 Atlantic hurricane season -- which began Friday, June 1 and runs through November 30 -- the National Weather Service's Climate Prediction Center (CPC) is calling for a 50 percent probability of a near-normal season, a 25 percent probability of an above-normal season and a 25 percent probability of a below-normal season. The 2012 hurricane season began early when Tropical Storm Alberto and Tropical Storm Beryl both developed several days before the official start of the season, the first time since 1908 that two tropical storms developed early; the only other year with two storms so early in the year was 1887.

According to the CPC, ongoing conditions that have been associated with increased Atlantic hurricane activity since 1995 favor a near-normal hurricane season, as do expected near-average sea surface temperatures across much of the tropical Atlantic Ocean and Caribbean Sea (called the Main Development Region, or MDR). In addition, the possible development of El Niño during the season could make conditions less conducive for hurricane formation and intensification during the peak months of August-October, shifting the activity toward the lower end of the predicted range

CPC forecasters say that there is a 70 percent chance of having 9-15 named storms, of which four to eight could become hurricanes, including one to three major hurricanes (Category 3, 4 or 5). These ranges do not represent the total possible ranges of activity seen in past similar years. Tropical systems acquire a name upon reaching tropical storm strength with sustained winds of at least 39 miles per hour. Tropical storms become hurricanes when winds reach 74 miles per hour and become major hurricanes when winds increase to 111 miles per hour. An average season has 12 named storms, including six hurricanes with three becoming -- *Continued page 3*

**TECHNICIAN CLASS STARTING
SEPTEMBER 19
@ ITT, 7:00P.M.**

**GENERAL CLASS STARTING
NOVEMBER 7
@ ITT, 7:00P.M.
CONTACT AL, AB8AA@ARRL.NET**



HURRICANES - CONT. FROM PAGE 2

ing major hurricanes.

Though this season isn't expected to be as busy as last year's above-average season, federal officials warned coastal residents to start stocking up on hurricane supplies and forming evacuation plans. "That's still a lot of activity, so just because we're predicting a near-normal season doesn't mean anybody's off the hook at all," said Gerry Bell, the lead seasonal forecaster at the CPC. "Our range (of expected storms) is a bit wider this year because of this inherent uncertainty right now based on the best guidance we have as to whether El Nino will form or not."

This year's hurricane season got an early start when Tropical Storm Alberto formed May 19 off the coast of South Carolina, dissipating just three days later over the Atlantic. Alberto was the first named storm to form during May in the Atlantic basin since Arthur in 2008, and the earliest tropical storm since Ana in April 2003. According to NHC Director Bill Read, KB5FYA, Alberto was unusual, in that it was a small storm that formed in a small area that was favorable for storm development. On May 23, Tropical Storm Beryl formed in the Caribbean, moving into Southern Florida and making landfall with near Jacksonville Beach. Read said that tropical storms can develop when seasons transition from one to another, in this case, spring into summer. Chris is slated to be the name of the named next storm of 2012.

The atmospheric and marine conditions that began with the 1995 hurricane season still continue. The 1995 season was extremely active, largely due to favorable conditions including a La Niña and warm sea surface temperatures. Nineteen named storms formed during the season, making it the third most active on record behind the 2005 and 1933 seasons, and tied with the 1887 and 2010 seasons. There were 11 storms that reached hurricane strength that year, placing 1995 behind the 1969, 2005 and 2010 seasons as the year with the most hurricanes to form in one season.

There were a number of destructive hurricanes during the 1995 season, totaling more than \$13 billion in damages and more than 100 deaths. Hurricane Erin caused substantial damage in Florida, while Felix caused heavy beach erosion in the northeast United States, producing strong waves that drowned eight. Hurricanes Luis and Marilyn caused billions of dollars in damages in the Leeward Islands and Bermuda. Hurricane Opal, the strongest storm of the season, caused very heavy damage along the US Gulf Coast. Hurricane Roxanne -- a late-season major hurricane -- caused heavy damage when it made landfall in Quintana Roo on the Yucatán Peninsula.

Amateur Radio and Hurricanes

Rick Palm, K1CE, editor of the ARRL's ARES E-Letter, warns that now is the time for ARES® members to assess their portfolio of communications equipment and disaster response knowledge. Palm gives several tips for amateurs involved with hurricane operations:

- Monitor major HF hurricane networks during events this season. The Hurricane Watch Net (HWN) on 14.325 MHz is one of several key players. It serves either the Atlantic or Pacific during a watch or warning period and coordinates with the National Hurricane Center (NHC) in Miami. Frequent, detailed information is issued on nets when storms pose a threat to the US mainland. In addition to hurricane spotting, local communicators may announce that residents have evacuated from low-lying flood areas. Other amateurs across the country can help by relaying information, keeping the net frequency clear and by listening. See the HWN's website for more information. The net works closely with WX4NHC, the Amateur Radio station at the NHC.

- The SATERN Net (Salvation Army Team Emergency Radio

Network) provides emergency communication support to the Salvation Army and populations at large. They also handle health-and-welfare traffic. SATERN holds high profile nets on 20 meters (14.265 MHz) during major hurricanes and has a long history of excellence, discipline and service. Refer to the SATERN website for more information.

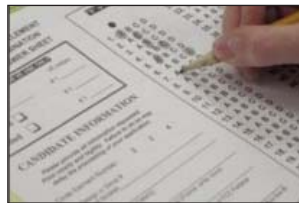
- The Maritime Mobile Service Net (MMSN) meets on 14.300 MHz and is composed of hams who serve and assist those in need of communications on the high seas. According to its website, the primary purpose of the net is for handling traffic from maritime mobile stations. The network is recognized by the United States Coast Guard and has an excellent working relationship with that agency. The MMSN has handled hundreds of incidents involving vessels in distress and medical emergencies in remote locations, as well as passing health and welfare traffic in and out of affected areas. They also work closely with the NWS and NHC by relaying weather reports from maritime stations.

- The VoIP SKYWARN and Hurricane Net operates by combining both the EchoLink and IRLP linked repeater networks, while handling critical wide area communications during major severe weather and tropical events. These operations have gained national stature in recent years and are a critical partner with WX4NHC. Whenever tropical weather is imposing a threat to the US mainland and certain other areas of interest, the VoIP WX net will be fully operational. See the VoIP SKYWARN and Hurricane Net website for more information.

Palm said that during hurricane events, there are usually two or three regional nets (usually on 40 or 20 meters) that spring to prominence as major key assets to the disaster response on an ad hoc basis. "Watch for these nets, as well as the nationally recognized networks described above, this season," he advised. "Don't transmit on their frequencies unless you are absolutely sure you have something substantive to add, and then only under the direction of the net control station."

ARRL Emergency Preparedness Manager Mike Corey, K1IU, added that when ARES® activates in response to any tropical event, it is crucial that information flows up through the Section and is reported to Headquarters. "These reports allow us to develop the situational awareness and disaster intelligence that is required for us as an organization to support the Sections that are impacted," he explained. "In this way, we are able to respond to relevant requests from the media and finally to coordinate with the governmental and non-governmental organizations. This information also allows us to make the decision at Headquarters on whether to stand up the ARRL HQ Emergency Response Team to support and coordinate the operations."

GETTING LICENSED: NEW AMATEUR EXTRA CLASS QUESTION POOL EFFECTIVE JULY 1



The new Amateur Extra class question pool -- released by the National Conference of Volunteer Examiner Coordinators in January 2012 -- becomes effective on Sunday, July 1. The current Amateur Extra class pool expires on June 30, 2012 and cannot be used after that date.

This new question pool -- including graphics and diagrams -- will remain valid until June 30, 2016. The new Amateur Extra pool contains 702 questions, from which 50 are selected for an Element 4 examination. The current Technician class question pool that became effective July 1, 2010 is valid through June 30, 2014. The current General class pool that became effective July 1, 2011 is valid until June 30, 2015.

2012 SAARA MEMBERS

Al Avnet AB8AA
Jane Avnet K8JAA
John Fabry KC8SPF
Steve Fabry KC8SOY
Ernie Greenisen KC8QPH
Ginger Grilli KC8ZFK
Don Kemp NN8B

Chuck Lazear N8LPM
Gloria Lazear N8LPN
Mel Lippiatt KA8OEB **
Bill McClaren KB8MNE**
Lela McClaren KB8YPD
Tom Miller KB8DUX **
Sue Neff KD8CGW

Dave Sprouse N8GOB **
Roger Thawley KC8CTV
Bob Tullis W8HZ **
Dave Volpe KB8NYS
Frank Zamarelli (Honorary Member)

** Life Members

2011 OFFICERS

President	Ginger Grilli	KC8ZFK
Vice President	Dave Sprouse	N8GOB
Secretary	Roger Thawley	KC8CTV
Treasurer	Lela McClaren	KB8YPD

Trustee's

1 Yr.	Don Kemp	NN8B
1 Yr.	Bill McClaren	KB8MNE
2 Yr.	Bob Tullis	W8HZ

Club Dues Structure

Full Membership	\$15.00/Year (Includes immediate family members)
Full Retired	\$12.00/Year
Associate Member	\$10.00/Year
Non-Member Newsletter	\$ 3.00/Year

Join the ARRL through your local ARRL affiliate club. When you do, the club gets \$15.00 for new members. A great way to support our club and have privileges that come with ARRL membership.

OFFICIAL CLUB ADDRESSES

Web Page	www.qsl.net/saara/
E-mail	gingergrilli@aol.com
U.S. Mail	S.A.A.R.A., P.O. Box 696, Salem, OH 44460-0696
Editor:	k8jaa@arrrl.net

NEWSLETTER Articles and Submittals

SAARA claims no liability for articles published in this newsletter. The viewpoints in the articles are not considered the viewpoints of SAARA membership.

All submittals for SAARA Speaks must be received by the Editor (k8jaa@arrrl.net) or hand delivered no later than December 10, March 10, June 10 or September 10 enabling the newsletters to be mailed and received prior to the months covered by them.

Advertisements for equipment for sale must also adhere to the same schedule. Newsletters are emailed to current members who have email addresses, and mailed to other subscribers, clubs that send newsletters to SAARA, and to selected officials.



SAARA
P.O.Box 696
Salem, OH 44460-0696

AMATEUR RADIO ASSOCIATION, INC. AddressService Requested

www.qsl.net/saara



One Nation Under God

Columbiana County NETS

Sunday	9:00 P.M. East Liverpool	146.700	Triangle ARC NET
Monday	8:00 P.M. Columbiana County		Columbiana County Emergency Training NET (ARES)
This NET alternates (lowest to highest) between 146.700, 146.775, 146.805, 147.255 and 147.285 repeaters in Columbiana County.			
	8:30 P.M. Bible Study on the Air	147.285	KB8MNE
Tuesday	7:30 P.M. Salem	147.510 Simplex	Homeland Security Net (last Tuesday of every month)
	9:00 P.M. Salem	K8BTP 147.255	Northern Columbiana County SAARA NET
	9:30 P.M. Salem	KB8MNE 28.310 SSB	SAARA Rag Chew Net
Thursday	8:30 P.M. Alliance	28.400 SSB	Alliance ARC NET
	9:00 P.M. Alliance	145.370	Alliance ARC NET
Saturday	8:00 P.M.	146.805- PL162.2	Skywarn net