

Contents

Index

ARGO Upload



About

How to use

Settings

Copy to local disk

About

ARGO Upload allows you to upload ARGO screen captures to your FTP server in a convenient way. It keeps track of the screen captures that ARGO saves to disk and uploads the file whenever a new capture is detected. Alternatively the captures can be copied to a local disk. It is assumed that the user of **ARGO Upload** has an elementary knowledge of using an FTP-client.

ARGO Upload is copyrighted freeware. This means that you can use it and distribute it freely but any commercial use (including adding it to a commercial traded "software collection") is strictly forbidden without prior written permission of the author.

Disclaimer : The author can not be held liable for any direct, indirect, consequential or incidental damages to other pieces of software, equipment, goods, or persons, arising from the use of this software.

In addition I want to mention that **ARGO upload** is developed to work with ARGO, but that there is no further connection between me and the PADAN team that developed the ARGO software.

© Rik Strobbe (ON7YD) , 2003-2008

on7yd@uba.be

[back to index](#)

How to use

Before you can upload files you need to enter following parameters :

- location on your harddisk where the ARGO screen captures can be found
- FTP address of your web space / server
- file name - including path - of the uploaded file on the server
- login name and password
- time interval for checking for new ARGO screen captures

Example :

Assume your ARGO screen captures are saved as `c:\ham\argo\captures\argo----.jpg` (where argo--.jpg means starting with argo00000.jpg , then argo00001.jpg and so on).

Further assume that your FTP address is `ftp.myserver.org` , the screen captures must be uploaded to `/argocaptures/argo.jpg` (do not forget to include the full path !) , your login is `mylogin` , your password is `topsecret` and you want to check for new captures every **30 seconds**.

In that case the **settings window** would look like :

ARGO capture :	<input type="text" value="c:\ham\argo\captures\argo"/>
FTP address :	<input type="text" value="ftp.myserver.org"/>
FTP file name (incl. path) :	<input type="text" value="/argocaptures/argo.jpg"/>
FTP login name :	<input type="text" value="mylogin"/>
FTP password :	<input type="password" value="*****"/>
Check for upload every :	<input type="text" value="30"/> <input checked="" type="radio"/> seconds <input type="radio"/> minutes

Additional parameters (Save password - Show server messages - Delete old file on server before uploading - ARGO captures handling - Start and stop times) can be set to customize **ARGO Upload** at your convenience.

Further **ArgoUpload** can notice an URL whenever a new capture is uploaded. This can be useful to keep a "capture collection" website up to date.

Detailed information on all parameters can be found under Settings.

[back to index](#)

Settings

[ARGO capture](#)

[FTP address](#)

[FTP file name](#)

[FTP login name](#)

[FTP password](#)

[Check for upload every](#)

[Save password](#)

[Show server messages](#)

[Delete old file on server before uploading](#)

[Start uploading at](#)

[Stop uploading at](#)

[ARGO handling](#)

[Notice URL](#)

If you click on the **OK button** then all parameters will be updated and the settings window will be closed. You can however also leave the settings window without updating the parameters (... if you made a mess ...) by clicking on



[back to index](#)

Copy to local disk

Instead of uploading the ARGO capture to a server it can also be copied to a local disk.

To do this:

- open the 'Settings' window
- leave the 'FTP address' field blank
- enter the target location (filename including full path) in the 'FTP file name' field

ARGO capture :	C:\Ham\argo\captures\argo	
FTP address :		
FTP file name (incl. path) :	D:\website\argocopy\argo.jpg	
FTP login name :		
FTP password :		
Check for upload every :	10	<input checked="" type="radio"/> seconds <input type="radio"/> minutes

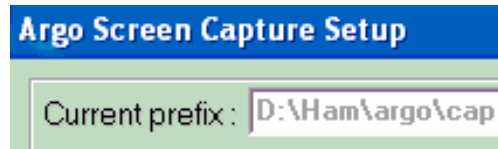
Any input to the 'FTP login name' and 'FTP password' fields will be ignored

[back to index](#)

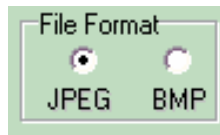
ARGO capture

The complete path and "prefix" where the ARGO screen captures are stored.

This parameter is retrieved from the windows registry and will be correct if you have **not changed** it in the ARGO software since the last shut down of ARGO (that's when the data are saved to the windows registry). If you have made any changes you must enter the string that is identical to the string you have entered in ARGO under **Capture -> Setup -> Current prefix** :



Important remark : The ARGO screen captures must be saved as JPEG (also to be set in **Capture -> Setup**)



FTP address

The FTP address of your server.

An:
Herd Software Development
Bernd Herd
Kettelerstr. 35

Tel.: +49-6206-707775
Fax: +49-6206-707776

68642 Bürstadt
Germany

Order of "Help to RTF"

Item Count	Product Description	Per Item (\$US)	Total (\$US)
_____	"Help to RTF" Standard conversion wizard for Windows Help files and Multimedia Viewer 2.0 files. SINGLE computer license.	40.--	_____
_____	"Help to RTF" Network conversion wizard for Windows Help files and Multimedia Viewer 2.0 files. License for one Site NETWORK.	80.--	_____
	Add for shipping and handling		10.--
		Total	_____

Your Address

Name: _____

Company: _____
Street: _____
ZIP-Code & City: _____
Tel. Fax: _____
E-Mail: _____
European VAT
Registration ID: _____
VISA Card Number
& expiry: _____

Sign:

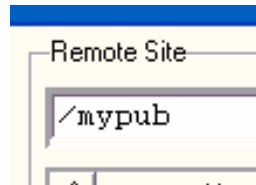
Date:

FTP file name

The name - including the full path - of the uploaded file on the server.

Be aware that you have to add the **full path**, even if you do not enter the server at the "root". In case of doubt check for the entry point with another FTP-client (such as WS_FTP or eventually your web-browser).

With WS_FTP you have to look here :



FTP login name

The login name you need to enter your server.

created with Help to RTF file format converter

FTP password

The password you need to enter your server. For security reasons the password will not appear on screen when you type it, instead a * will appear for each character.

If you enable the [save password](#) option then the password will be saved (and remembered). The password is coded before it is saved, so it cannot be retrieved by simply reading the setup file. But be aware that the coding is not extremely heavy and thus not 100% secure (is any coding 100% secure ?). So I do not recommend to save the password on a computer where many people have access to if the password gives unlimited access to a server where you run a multi-million \$\$\$ business, but it should be OK to save the password if it gives only access to your hobby website.

Check for upload every

The interval used to check for new ARGO screen captures. This interval can be given either in seconds or minutes.

ARGO upload will only send a file to the server when a new screen capture is found. This means that it is best to set a short interval (ie. 10 .. 30 seconds) in order to ensure that there is no too much time delay between the appearance of the screen captures and their uploading to the server.

Save password

If this option is enabled the password will be saved (remembered).

The password is coded before it is saved, so it cannot be retrieved by simply reading the setup file. But be aware that the coding is not extremely heavy and thus not 100% secure (is any coding 100% secure ?). So I do not recommend to save the password on a computer where many people have access to if the password gives unlimited access to a server where you run a multi-million \$\$\$ business, but it should be OK to save the password if it gives only access to your hobby website.

Show server messages

Show the messages that are received from the server.

This option is in first instance meant as a trouble-shooting help. If something does not work properly you can enable this option and maybe the server messages will give a clue of what is going wrong.

Delete old file on server before uploading

If this option is enabled file on the server will not be just overwritten but the old file will be deleted before the new file is uploaded to the server.

This option can be useful if you get a **permission to overwrite denied** error (or something similar). Otherwise it is of no use, but will not be harmful either.

ARGO handling

In order to avoid that too many screen captures get on your harddisk (each screen capture takes typically 70-100kB) you can tell **ARGO upload** to delete the screen captures from your harddisk after uploading.

But in some cases you want to keep the screen captures, not just as many as you need for a more or less continuous update. Therefore you can set an additional parameter **But keep an ARGO capture ...**, this will allow you to keep an ARGO screen capture at the given interval.

Further you can tell ArgoUpload not to check if ARGO is running at startup. That way there will be no pop-up messages (that stop ArgoUpload from running).

ARGO handling :

- ☒ Delete ARGO captures from HD after uploading, but keep an ARGO capture every minutes
- ☒ Do not check for ARGO running at startup

ARGO

Argo is a very popular viewer for slow CW, like QRSS and DFCW. It is developed by the PADAN team (Alberto, I2PHD and Vittorio, IK2CZL).

Have a look at **www.weaksignals.com** for more information.

Start and stop uploading at a given time

The uploading can be started and stopped automatically at given times.

Start time and stop time must be given in the hhmm format.

Following options are available:

- **Start time and stop time left blank**

Uploading has to be started and stopped by hand.

- **Start time given and stop time left blank**

Uploading will start at the given time and has to be stopped by hand.

- **Start time left blank and stop time given**

Uploading has to be started by hand and will stop at the given stop time.

- **Start time and stop time given**

Uploading will start at the given start time and stop at the given stop time. This cycle will be repeated until it is stopped by hand.

Assume that the start time is given as 1030 and the stop time as 1845. **ArgoUpload** will upload every day from 10h30 to 18h45, until it is stopped by hand.

This option will allow the user to upload captures only during the expected time of propagation.

Notice URL

ArgoUpload can notice an URL whenever a new capture is uploaded. This can be useful to keep a "capture collection" website up to date.

Following information must be given:

- **URL to be noticed**

The URL that handles the captures, without any php parameters (even not the question mark).

- **Login**

The login you need to notice the URL.

- **Password**

The password you need to notice the URL.

- **URL of capture**

The full URL of the place where your uploaded capture reside.

- **Notice URL**

This must be checked to enable this option.

Notice URL :		
URL to be noticed :	<input type="text" value="http://www.grabberworld.net/grabber.php"/>	
Login :	<input type="text" value="itsme"/>	Password : <input type="text" value="topsecret"/>
URL of capture :	<input type="text" value="http://www.mysite.org/grabber/capt.jpg"/>	
<input checked="" type="checkbox"/> Notice URL		

Index