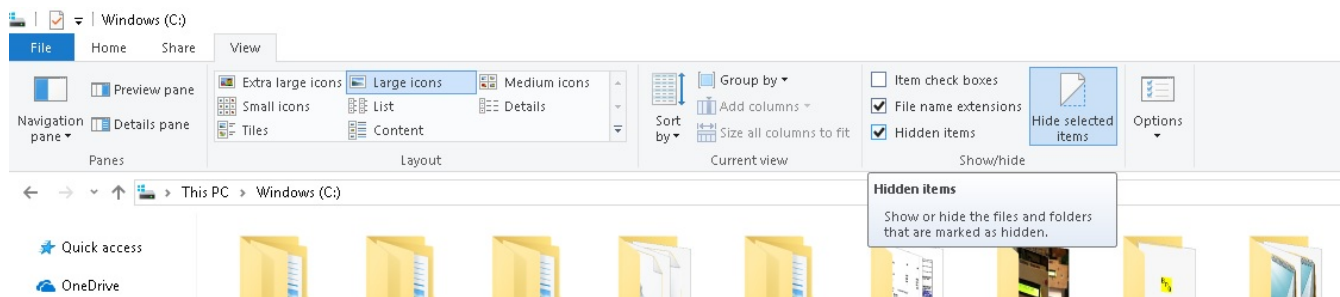


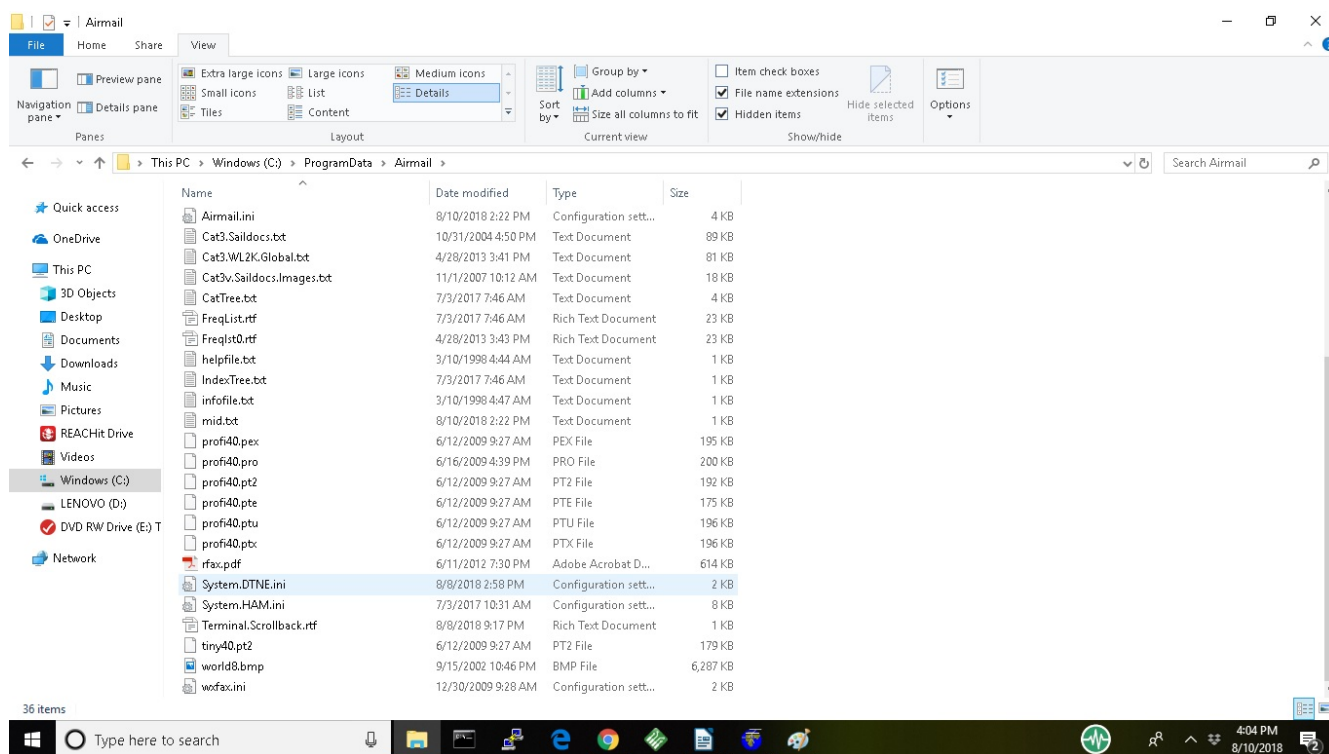
DTN AIRMAIL SOFTWARE INTALLATION

INSTRUCTIONS FOR ADDING THE **System.DTNE.ini** FILE TO AIRMAIL

1. Download the zip file with all the DTN software. See:
<http://www.qsl.net/nf4rc/Tech/DTNFiles.zip>
2. Make a directory such as [c:\DTN](#) and extract the contents of the zip file to that directory. (If you don't know how to create directories, watch this youtube video: <https://www.youtube.com/watch?v=B5SkHifyR9I>)
3. Double click on the installation program **amhc34062b.exe** to begin the installation.
4. Installation Directories: . Install the Airmail software (Current version: 3.4.062, written quite a few years ago) in the default directories that it chooses. That will probably be: "C:\Program Files (x86)\Airmail\Airmail3.exe"
5. Hidden Directories: You will in a moment need to work inside the hidden directory [c:\ProgramData](#) so you'll need for your Windows File Explorer to allow you to see "hidden" directories. Bring up File Explorer, click on VIEW and then click on the Hidden items checkbox so it can do this. See the figure below:



6. Using Windows File Explorer, find the file **System.DTNE.ini** which was unpacked back into [c:\DTN](#) if you followed the suggestions above. Copy that file and paste it into [c:\ProgramData](#)\Airmail (see figure following where it is shown installed)

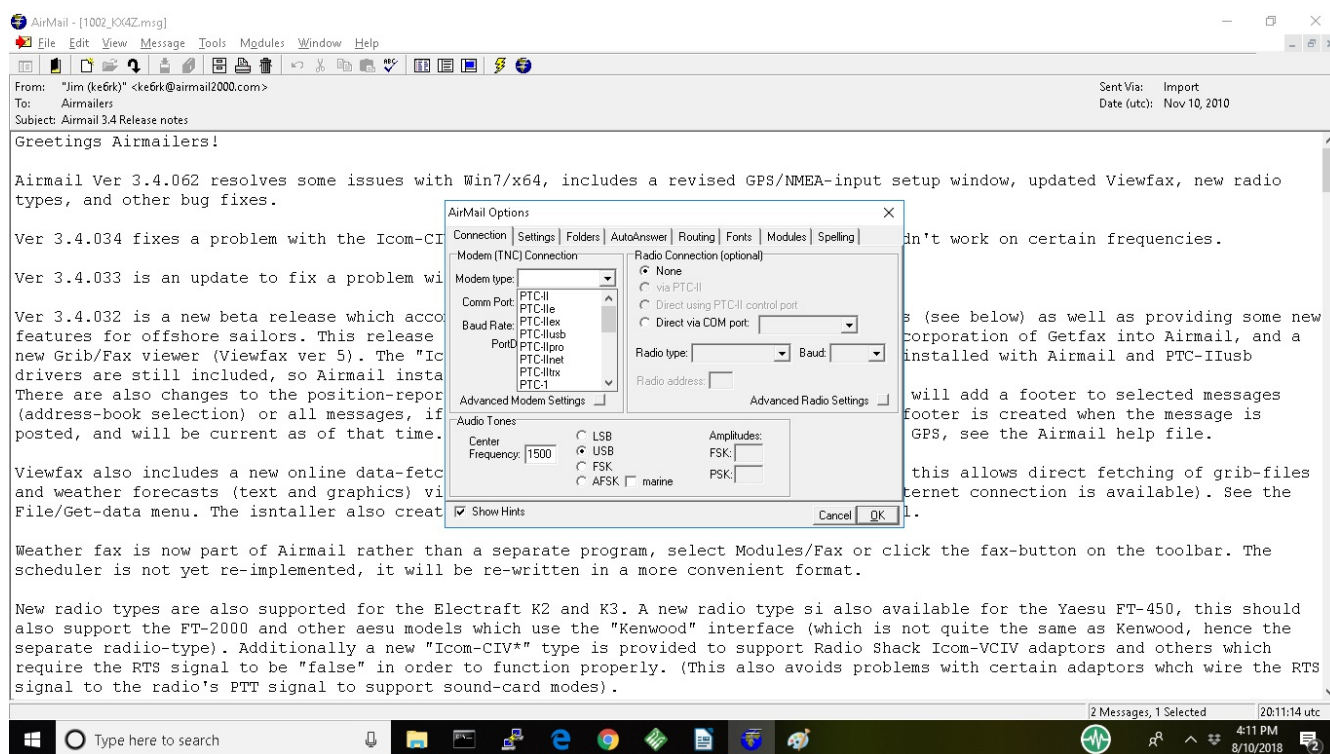


7. Now activate the Airmail3 application (double click the icon on the desktop or similar).

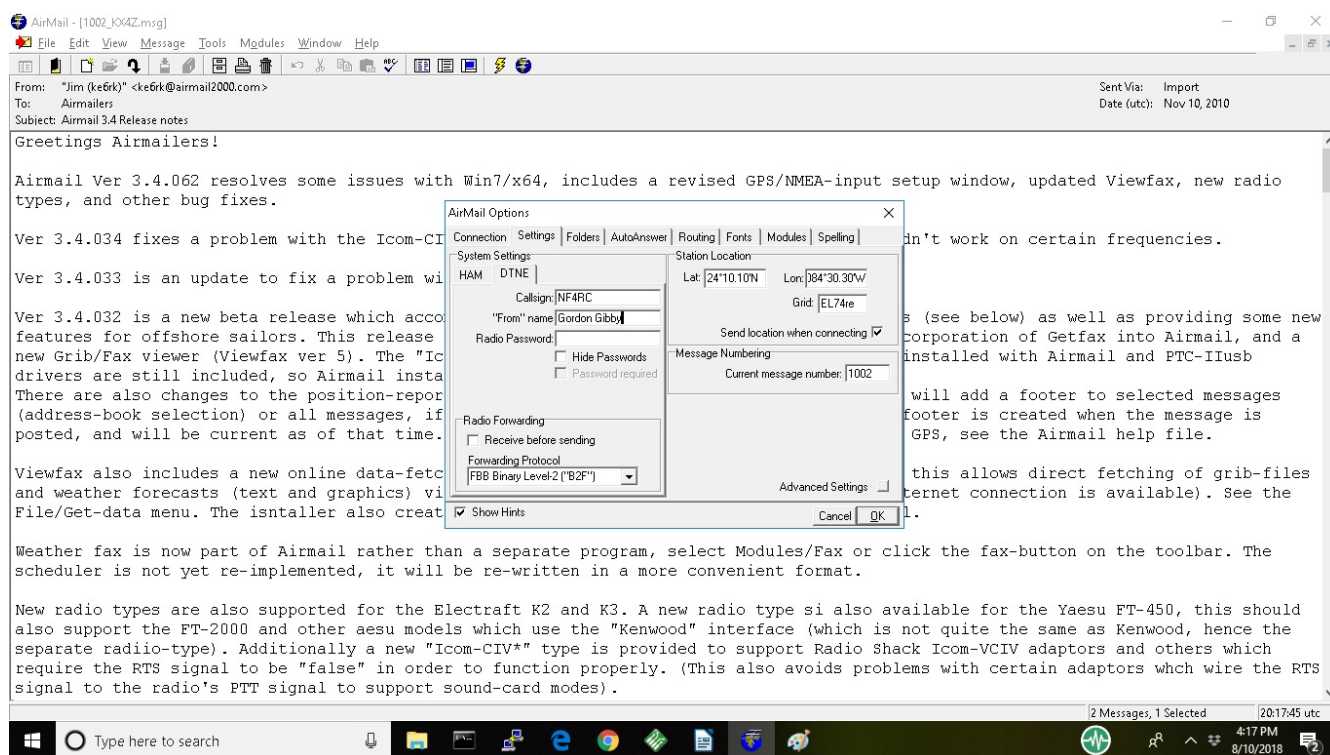
8. You should be led through a configuration system – make sure you Enable the DTNE system, and enter the proper pactor modem type and connection information; it helps if you can computer control your radio also but not required; you'll need your latitude and longitude. Don't forget the N and the W (last characters it wants.) Your GPS coordinates do not have to be perfect.

Be certain that you get the following configuration stuff in there:

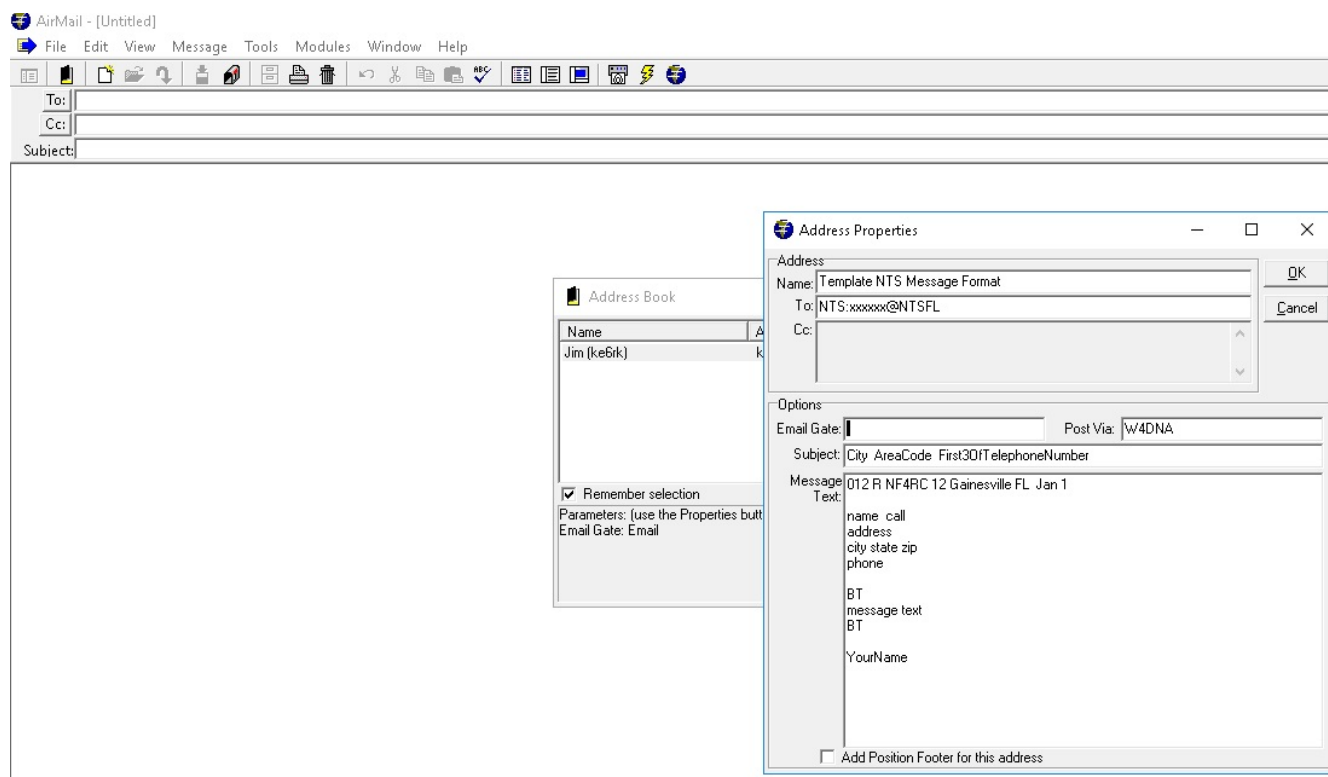
a) Your modem and radio type stuff (Tools | Options):



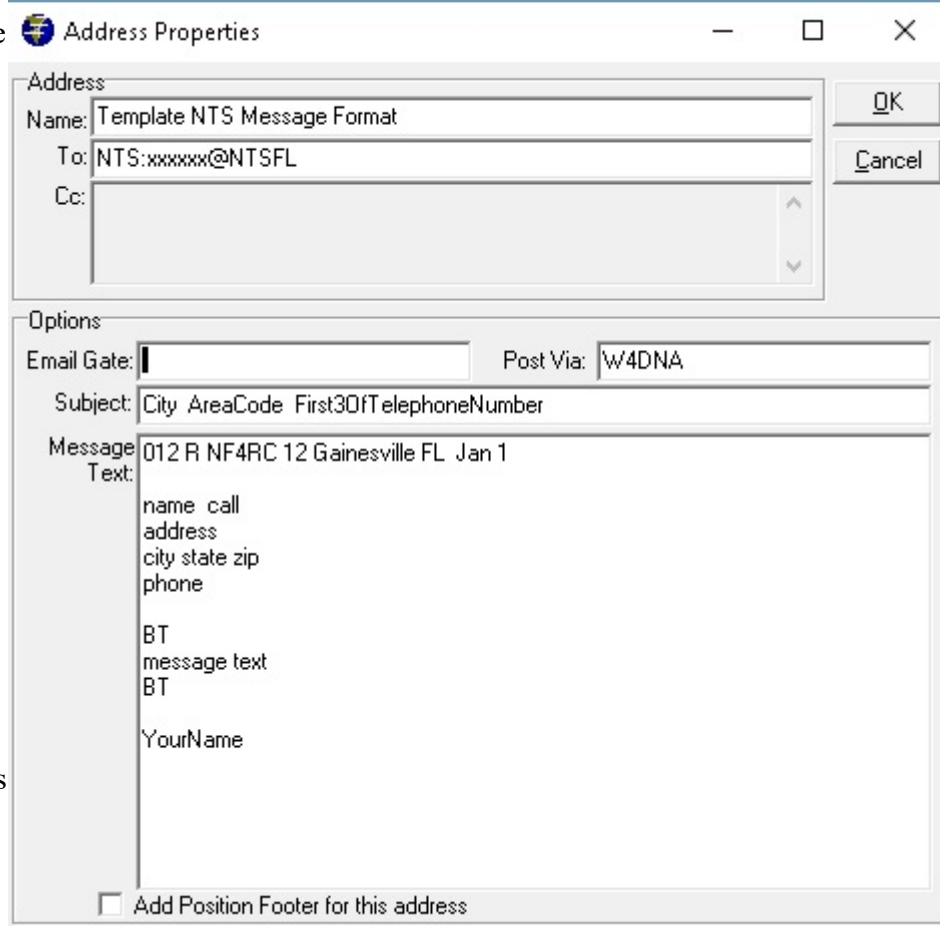
b) the DTNE setup information: Tools | Options | Settings | DTNE tab. The Ham tab is for connecting to winlink type servers --- but you probably will do better using regular WINLINK EXPRESS client software for that...



9. The DTN system uses a radiogram -type template that you will want to add to your address book. To get to this, click FILE |New (for new message....) and then on the dialog box for the address box, fill in this “generic message” which you can use from then on to create DTN style messages:



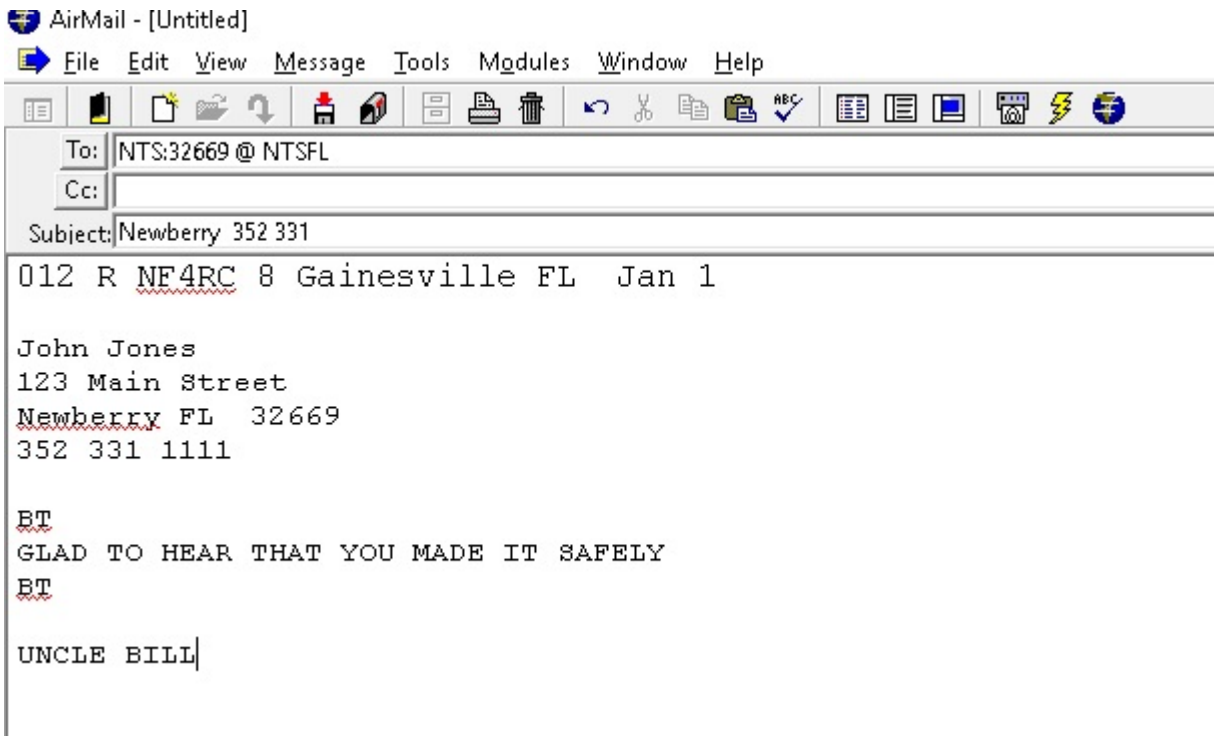
A closer view of the template addressed



For more information, see:

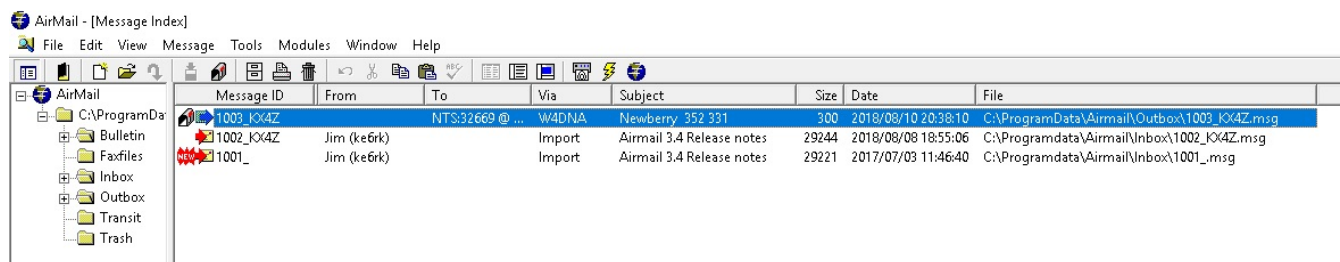
https://nts-digital.net/mw/index.php/AirMail_Addressing

9. Choosing that “address” we can write a real message:



10. Click MESSAGE | POST to post it for sending when you’re done.

It will now show up in your OUTBOX



11. In order to SEND the message, click on MODULES | HF Terminal, choose W4DNA and start a connection. The rest operates fairly similarly to current WINLINK.