

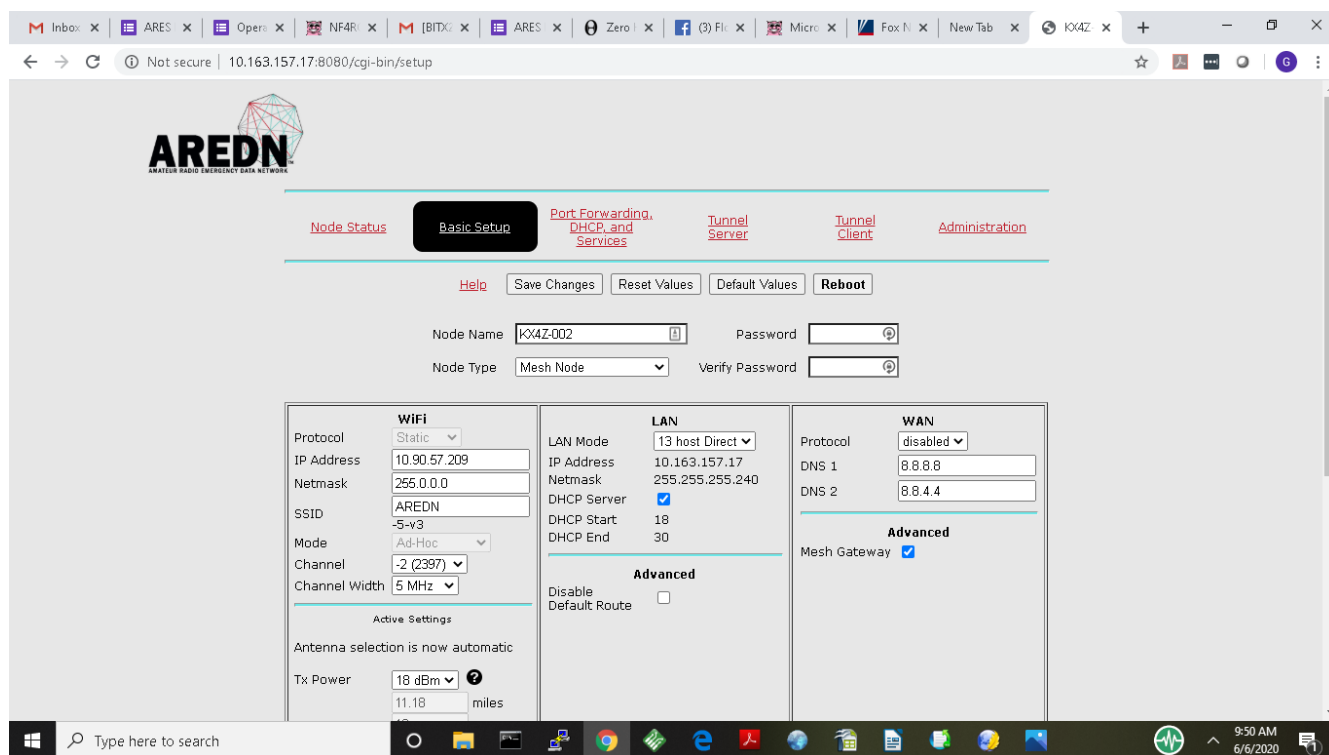
# Getting N3FJP Software working over MESH NETWORK

Draft: June 6 2020

GL Gibby KX4Z

NOTE: This is a “work in progress” – I certainly don’t have the expertise or experience of Larry – so learning while I go here.....

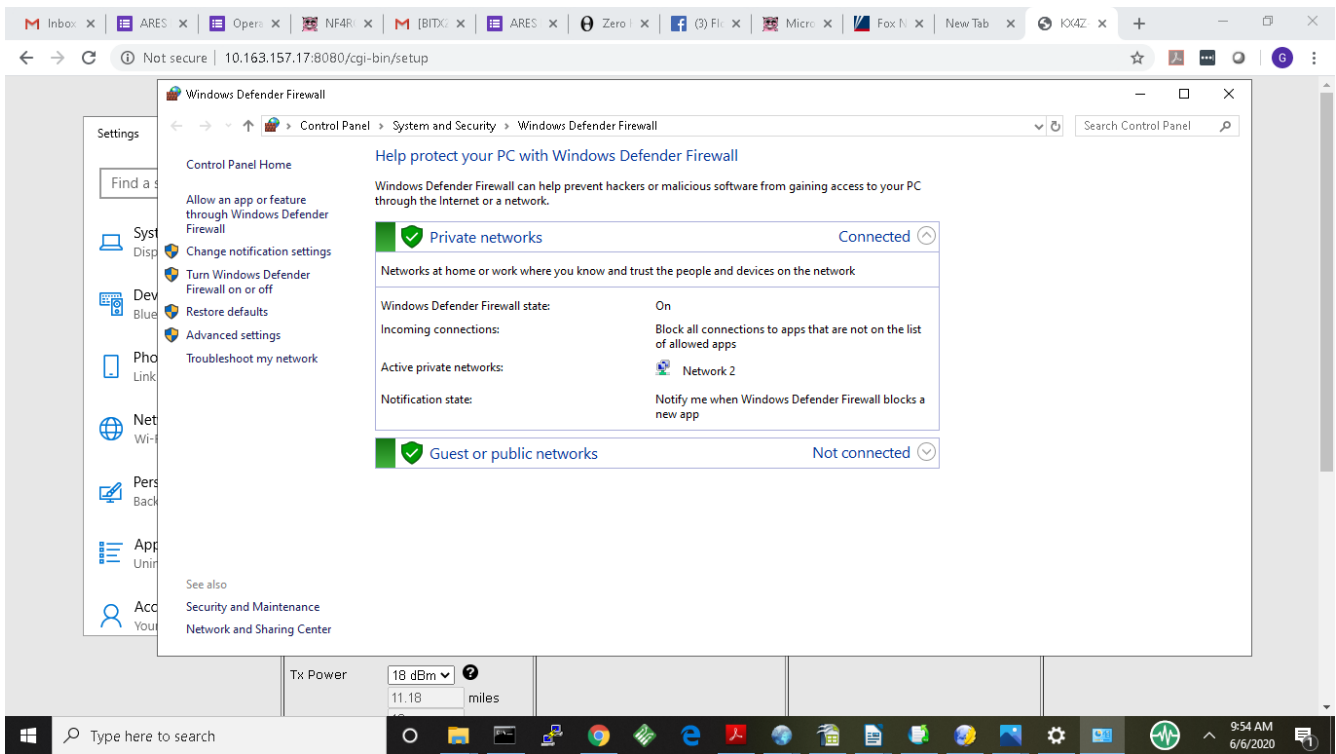
1. Ensure that computers connecting to the Ubiquity AREDN network have a valid default route to the mesh network, so that they can reach other computers on the private network. This is done by proper configuration of the MESH Ubiquity setup – **it must NOT disable the “default route”**. I also have mine set so that they are a MESH GATEWAY, which may mean that they participate in forwarding packets, but I really don’t know that for sure.



2. I cannot be certain (yet) whether PING packets (which use ICMP protocol) must be accepted , but it certainly makes TESTING of the system a ton easier!!!

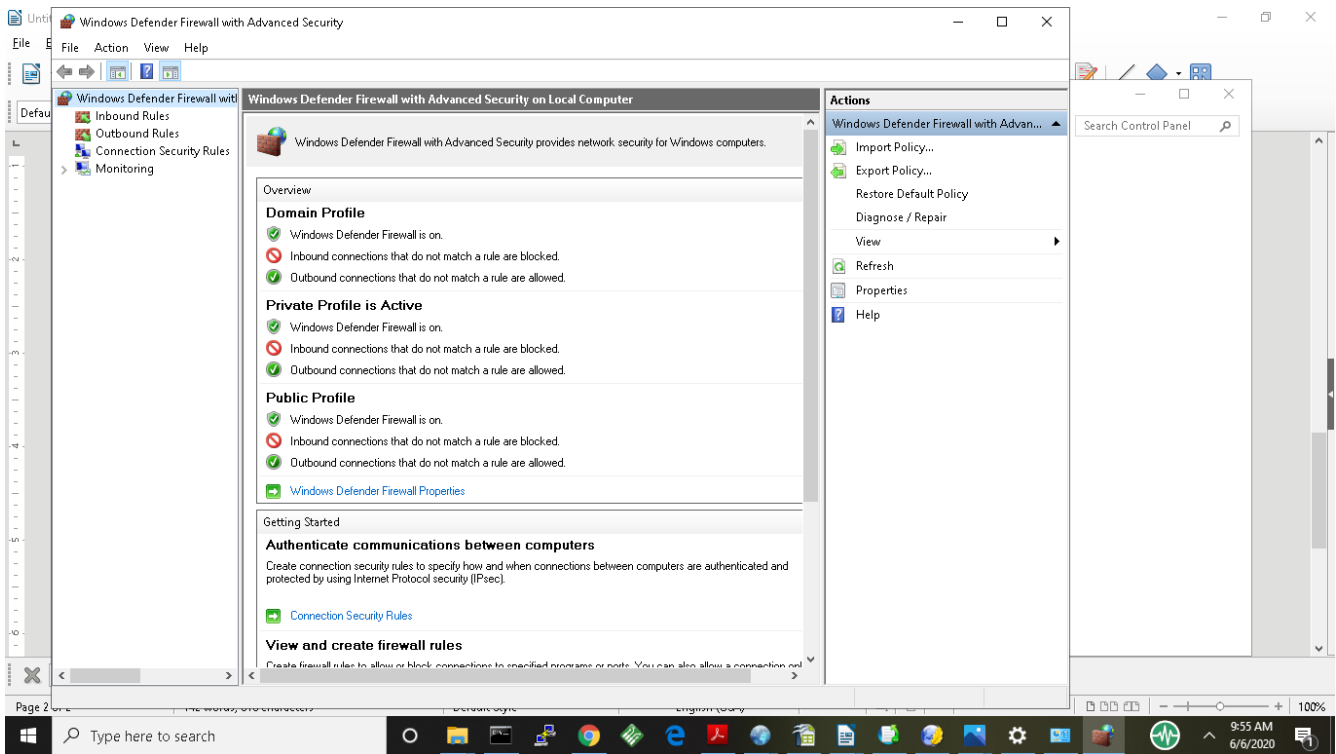
Windows 10 Machine:

Settings / Get to the WINDOWS DEFENDER FIREWALL (the only one I use, and therefore the only one I can explain here)



Click on Advanced Settings (left hand column)

We will have to adjust both INBOUND rules and OUTBOUND rules. Click on Inbound rules first.



Scroll down the list to

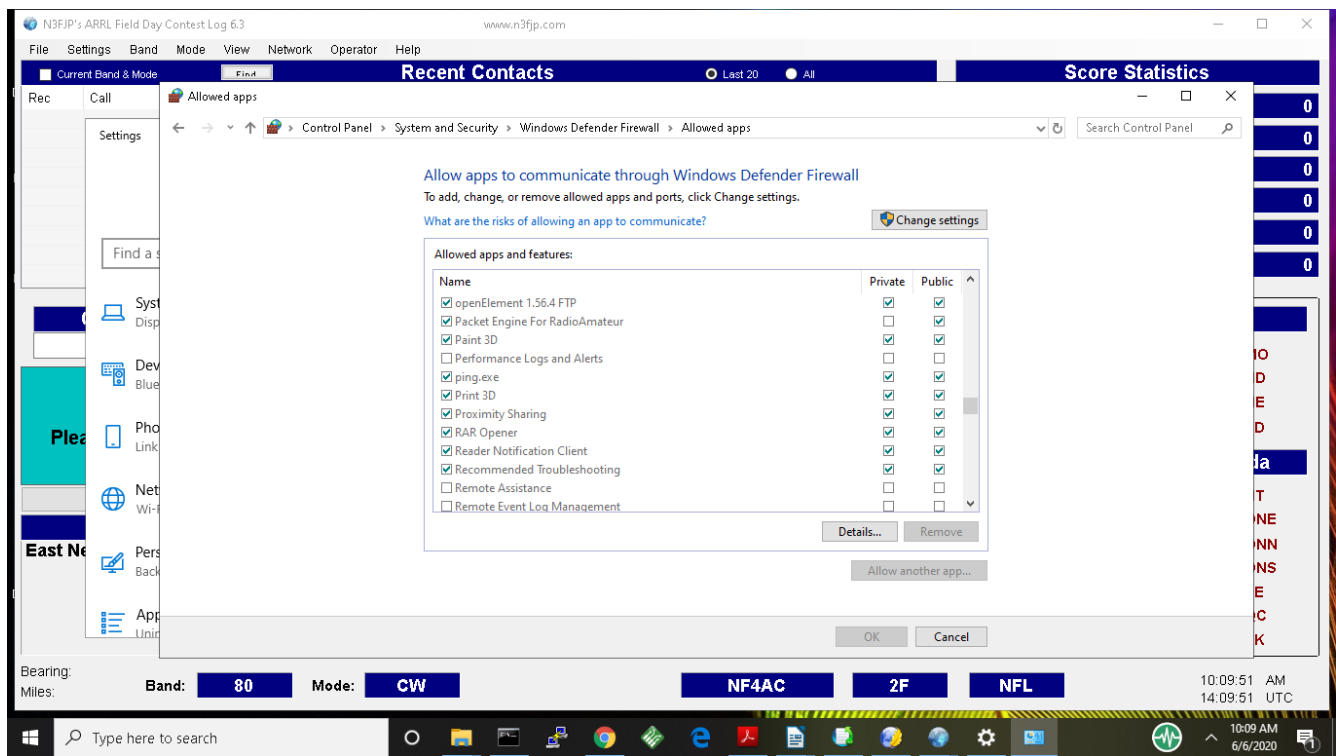
File and Printer Sharing (Echo Request – ICMP-v4 In)

Enable that both for domain and for private networks. (I think you click on it, and then ENABLE RULE in the right hand column, for each)

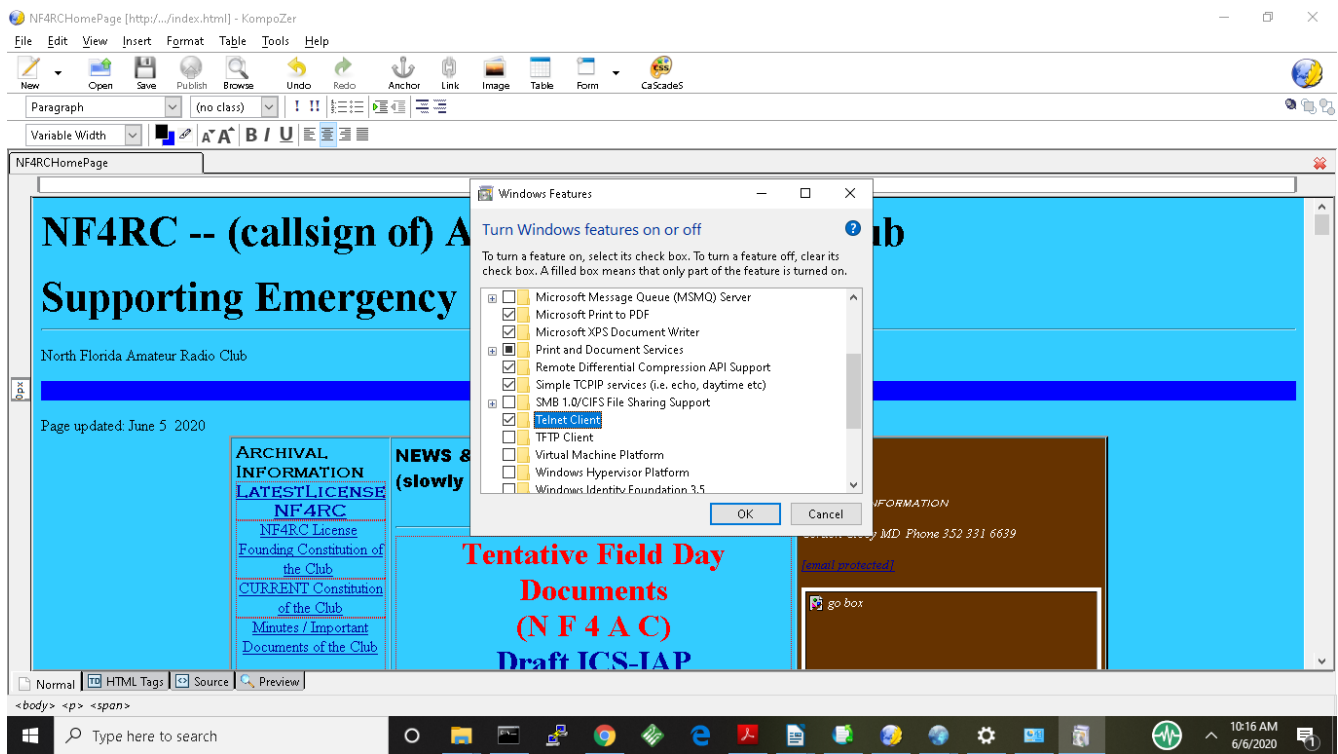
Repeat by going to OUTBOUND RULES and enable File and Printer Sharing ( Echo Request ICMP-v4 Out) for both Domain and Private networks.

4. I also made the ping.exe program able to communicate through the firewall:



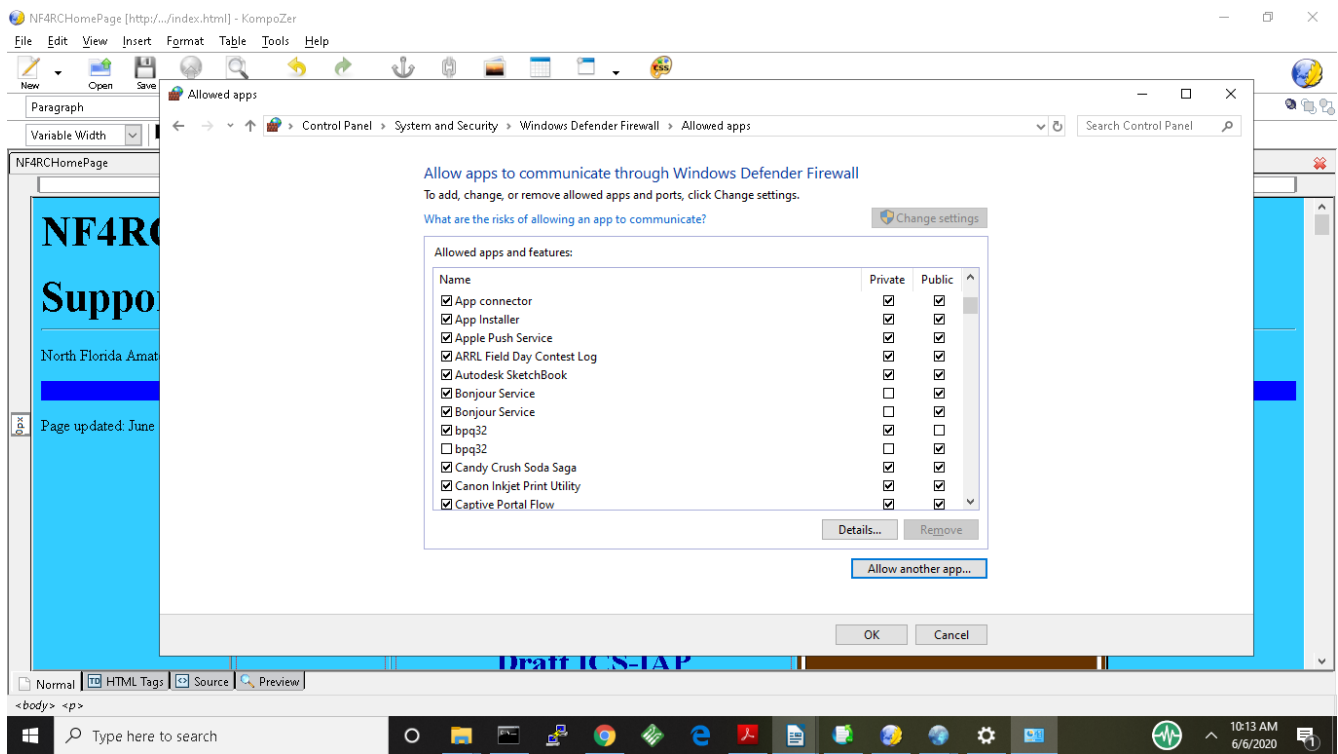


If you don't have ping.exe or telnet on your computer, this is a Windows "feature" that has to be installed; I also recommend loading putty.exe. I also enabled TCP/IP Ping (a separate entry) for passing through the firewall.



Putty.exe can be found by googling for it.

5. I also had to be certain that the **ARRL Field Day Contest Log** was on the approved list of applications to be allowed through the firewall – this requires clicking the **CHANGE** button up to the right, and then selecting (different from the usual user interface)



6. After I did all the above, when I went to N3FJP Setup / Networks and entered in the IP number of the computer that I had picked to do the logging, all went well. Recognize that I'm a newbie at this, so more information may turn up.

### Setting up the LOGGING COMPUTER:

I haven't gotten all of this figured out yet.

1. it seems to take about 10-15 seconds to make connections when you turn on the computers
2. Setting up the logging computer seems to work better when you enter its NAME on the actual computer, rather than the IP number – but other user stations seem to connect fine via the ip number.
3. I clicked the button on the actual server computer “Set Msg Server to Log File Host” I don't know exactly what that does...
4. On all computers, I clicked on Enable Status/Chat functions
5. On all computers, I clicked on TCP

It works over the mesh.

You can click the “network” menu item and see the connected computers and messages etc.

N3FJP's ARRL Field Day Contest Log 6.3 www.n3fjp.com

File Settings Band Mode View Network Operator Help

Current Band & Mode Find **Recent Contacts** Last 20 All **Score Statistics**

Rec	Call	Network Status Display 1.2 (Ctrl N)								0		
		160	80	60	40	30	20	17	15	12	10	0
		CW	GordonsLe		DESKTOP-							0
		Digital										0
		6	2	1.25	70 cm	38 cm	28 cm	18 cm	9 cm	6 cm	3 cm	0
		Phone:										0
		CW:										0
		Digital:										0

This Station's Name: GordonsLenovoG5

Server Name or IP: GordonsLenovoG50

Set Msg Server to Log File Host

Type message to send and press enter:

Message To (blank to broadcast):

GordonsLenovoG50  
DESKTOP-K5Q8CGE

Server and clients connected

Network Method:  
 File Share  TCP

Enable Status / Chat Functions

Sync Clocks

Help Done

- Keep ALL network equipment (especially your PCs, router and / or hubs) on a UPS! Power fluctuations on the network and PC shut downs due to power loss will damage your data file, cause the loss of a block of records within your database or corrupt it completely. If your PCs go down each time your generator runs out of gas, data loss is just a matter of time!

To: From: GordonsLenovoG50 6/6/2020 10:53:12 AM

This is a test from the server

To: From: GordonsLenovoG50 6/6/2020 10:53:26 AM

This is yet another test

Status: Connected to: GordonsLenovoG50

**Canada**

CO	MO
IA	ND
KS	NE
MN	SD
<b>Canada</b>	
AB	NT
BC	ONE
GTA	ONN
MAR	ONS
MB	PE
NL	QC
	SK

Bearing: Band: **80** Mode: **CW** **NF4AC** **2F** **NFL** 10:54:28 AM

Miles: 14:54:28 UTC

10:54 AM  
6/6/2020