

# ALINCO

## VHF FM MOBILE TRANSCEIVER

# DR-119T DR-119E

(U.S. Version)

(European Version)



DR-119T



DR-119E

### 50WATTS: BIG POWER IN COMPACT PACKAGE

**A Super-Compact mobile in a size no bigger than an ordinary car stereo, the tiny DR-119T/E is really powerful 50W VHF FM mobile with excellent sensitivity but built tight for low intermod. The ergonomic design fits easily in your car.**

#### High Output Power

The DR-119T/E provide a powerful 50Watts of RF Output with HI/LO power switch.

#### Compact Size and Lightweight.

140(W)×40(H)×170(D)mm (5-1/2"×2"×6-3/4") at 1.1 kgs(2.42 lbs)

#### 14 Multi Function Memory Channels.

The unit contains 14 fully programmable Memory Channels. Each channel stores operating frequency, Standard offset and other useful information.

#### High Visible LCD.

A new color LCD.

#### 6 Channel Spacing steps.

for ease of operation 5, 10, 12.5, 15, 20 and 25 KHz.

#### 4 Scanning Modes.

- (a) VFO -Scanning of the entire band.
- (b) Memory -Scanning of selected memories.
- (c) Programmed Band-Scanning of a selected segment of the band.
- (d) Priority Scanning-Allows selection of a frequency, in VFO or Memory, to serve as a priority frequency.

#### Restricted Access Operation.

allows for programmable encode/decode sub-audible tones standard (DR-119T) or a 1750Hz tone call function (DR-119E).

#### Microphone

The standard microphone offers:

- (A) UP/DOWN buttons for ease of frequency/Memory selection.

- (B) An LED "ON AIR" indicator and "LOCK" switch to enable/disable microphone function (DR-119E)

- (C) DTMF Encoder built-in (DR-119T)

#### Other Outstanding

Features:

- Function Lock Key
- Reverse Key-Inverts TX-RX
- Memory Skip
- 1 Channel Odd Offset
- Multiple Standard Offsets

#### Accessories supplied

as standard:

- Hand Microphone (Condenser type)
  - a. 16 button DTMF Microphone (DR-119T)
  - b. Hand Microphone (DR-119 E)
- Mobile Mounting Bracket
- Mounting Hardware
- D.C. power Cable

## SPECIFICATIONS

### ● General

Frequency Coverage .....	144.00-147.995MHz(U.S.Version) 144.00-145.9875MHz(Europe Version)
Frequency Resolution .....	5, 10, 12.5, 15, 20 and 25kHz
Antenna Impedance .....	50 ohms unbalanced
Power Supply requirement .....	13.8 Volts D.C.
Current Drain at 13.8V .....	Receiving Squelched: Does not exceed 500mA Transmitting High: 50W approx. 11A Low: 5W approx. 4A
Dimension .....	140mm(W) x 40mm(H) x 170mm(D) (5 1/2" x (2") x (6 3/4")
Weight .....	1.1Kgs.(2.42Lbs.)

### ● Transmitter

Output power .....	High: 50Watts Low: Approx. 5Watts
Emission Mode .....	F3E(FM)
Modulation System .....	Variable Reactance F.M.
Max. Frequency Deviation .....	±5kHz
Spurious Emission .....	More than 60dB below Carrier
Microphone .....	Electret Condenser Microphone
Operating Mode .....	Simplex Duplex: ±600kHz, 1.6MHz, 5MHz, 7.6MHz from receive frequency and 1 channel odd offsets programmable
DTMF Encoder .....	Built-in(DR-119T)

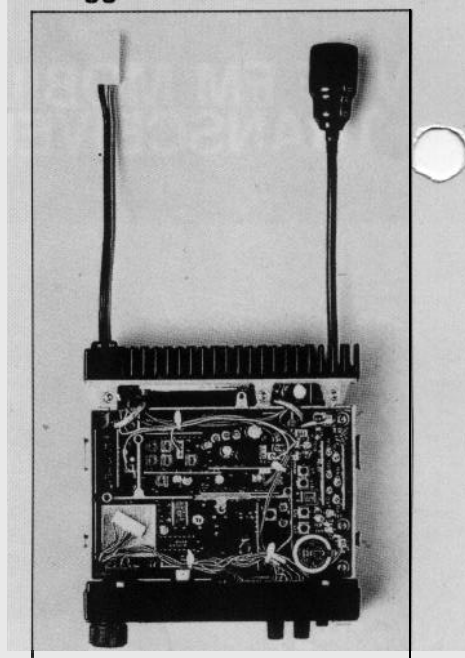
### ● Receiver

Receiving System .....	Superhetrodyne dual conversion
Modulation acceptance .....	F3E(FM)
Intermediate frequency .....	1st 10.7MHz 2nd 455kHz
Sensitivity .....	12dB SINAD less than 0.16μV
Selectivity .....	More than ±6kHz at -6dB

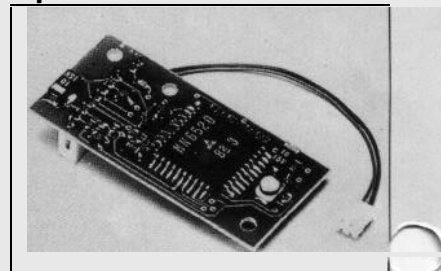
Audio Power Output .....	More than 1.5Watts(8ohms) -10% Distortion
Speaker Impedance .....	8 ohms

Note: Specifications are subject to change without notice.  
Specifications are guaranteed for amateur band only.

### ■ Ruzined Die-Cast Chassis

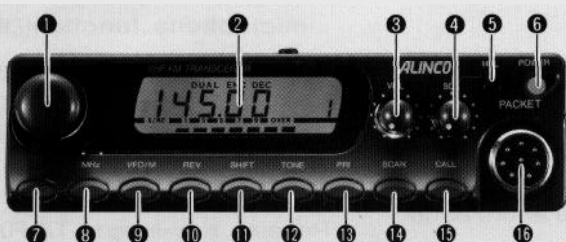


### Option For E-Version



Tone Squelch Unit EJ-3U

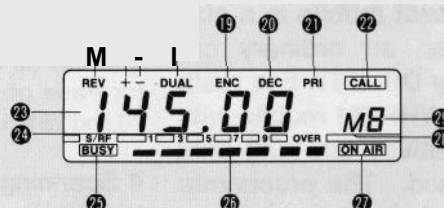
### ■ Front Panel



- ① Main Dial
- ② LCD Panel
- ③ Volume Control
- ④ Squelch Control
- @H/L Switch
- ⑥ Power Switch
- @Function/Memory Write Key
- ⑧ MHz(Band) Key
- ⑨ VFO/M/Channel Step Key
- ⑩ Reverse/Lock Key

- ⑪ Shift Key
- ⑫ Sub Tone/BEEP Key
- ⑬ Priority Key
- @Scan/Memory Skip Key
- ⑮ Call Channel/Call Channel Write Key (DR-119E: Tone Burst key)
- ⑯ Microphone Terminal
- @Reverse Indication
- ⑰ Offset Indication
- ⑱ Tone Encoder Indication

### ■ LCD Panel



- @Tone Decoder(Tone Squelch)Indication
- ⑲ Priority Indication
- @Call Channel Indication
- ⑳ Frequency Indication
- @Decimal Readout Point
- ㉑ Busy Indication
- @S/R/F Meter Indication
- ㉒ On Air Indication
- @Memory Indication
- @Memory Channel Indication

Authorized Dealer:



**ALINCO ELECTRONICS INC.**

Head Office: "TWIN 21" MID Tower Building 23F, 1-61, 2-Chomei Shiro  
Chuo-ku Osaka No.540 Japan  
Factory: I-I-I. Mishimae. Takatsuki. Osaka No.569, Japan

**ALINCO ELECTRONICS INC.**

438 Amapola Avenue, Unit130 Torrance, CA 90501, U.S.A.