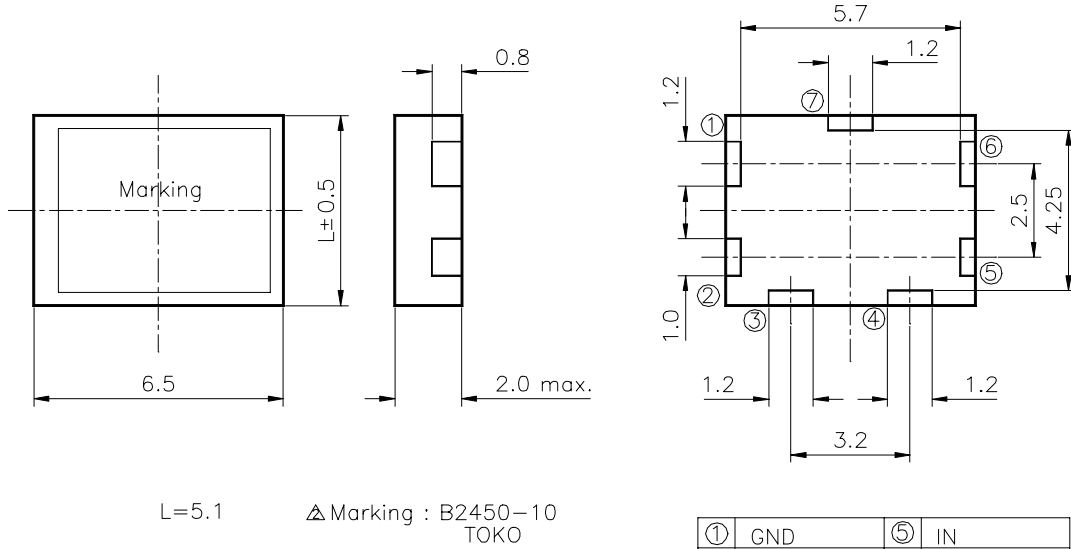


SPECIFICATION OF DIELECTRIC FILTER

TOKO P/No : TDFM1B-2450T-10

1. OUTLINE DIMENSION



| | | | |
|---|-----|---|-----|
| ① | GND | ⑤ | IN |
| ② | OUT | ⑥ | GND |
| ③ | GND | ⑦ | GND |
| ④ | GND | | |

tolerance: ± 0.3
unit : mm

2. ELECTRICAL CHARACTERISTICS

SPECIFICATION

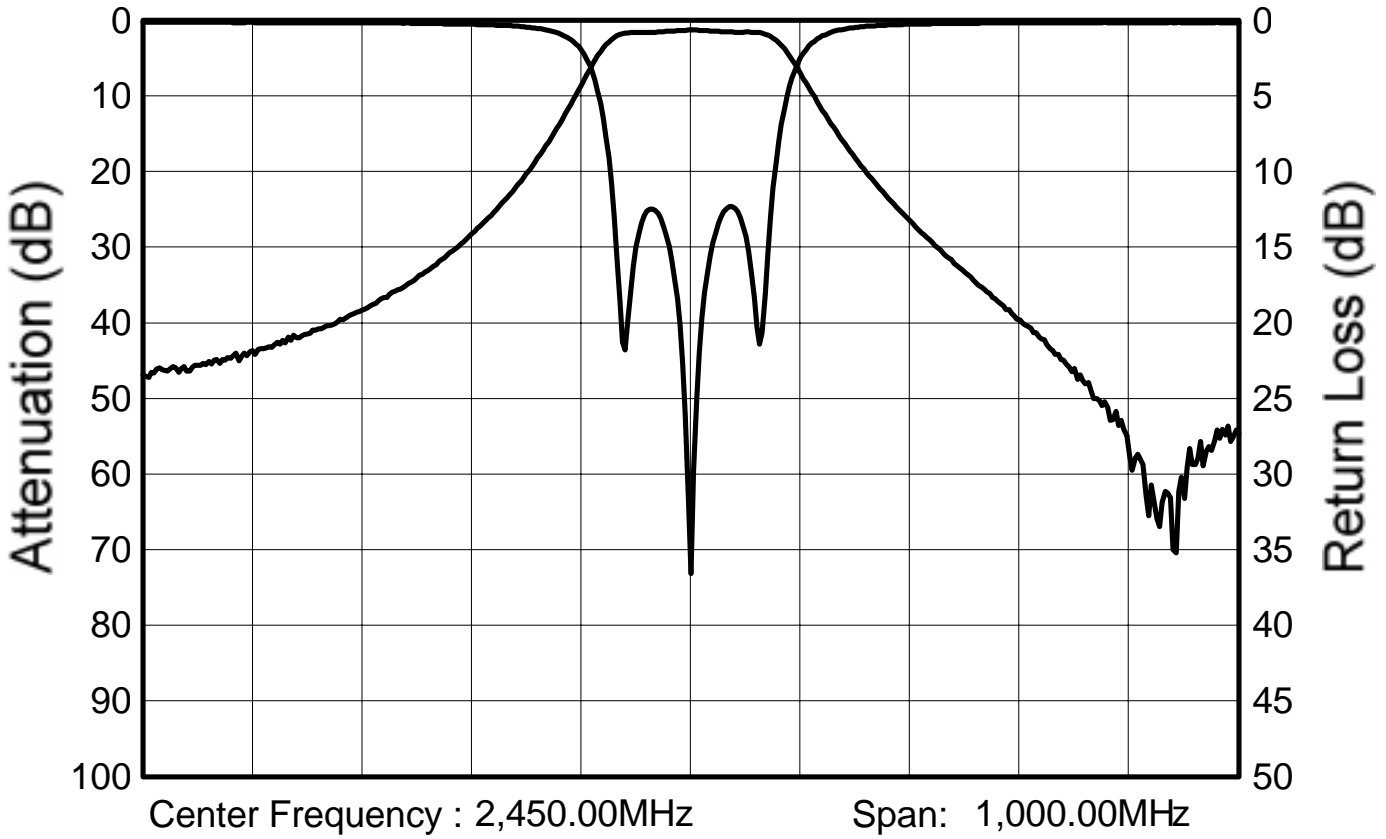
| | |
|-----------------------------|---------------------|
| CENTER FREQUENCY (Fo) | : 2450.0 MHz |
| PASS BAND WIDTH | : Fo \pm 50.0 MHz |
| INSERTION LOSS IN PASS BAND | : 2.3dB max. |
| RIPPLE IN PASS BAND | : 1.0dB max. |
| V.S.W.R IN PASS BAND | : 2.0 max. |
| ATTENUATION | |
| at Fo-430MHz | : 35.0dB min. |
| at Fo-190MHz | : 24.0dB min. |
| at Fo+350MHz | : 30.0dB min. |
| IN/OUT IMPEDANCE | : 50 ohm |

(All specifications are an absolute value.)

| | | |
|--------|--------------|------------|
| Rev 2 | JULY.22.1997 | S. OHTSUKA |
| Rev 1 | FEB.24.1997 | S. OHTSUKA |
| Orig. | MAY.22.1996 | E. TANAKA |
| Issues | | Sig. |

Test Data of Dielectric Filter

Toko No. : TDFM1B-2450T-10



| | |
|-------------------------|---------|
| Passband Insertion Loss | 1.62dB |
| Passband Ripple | 0.33dB |
| Passband V.S.W.R. | 1.64 |
| Attenuation | |
| at 2,020.00MHz | 45.35dB |
| at 2,260.00MHz | 26.86dB |
| at 2,800.00MHz | 46.08dB |

Date : 96.08.28

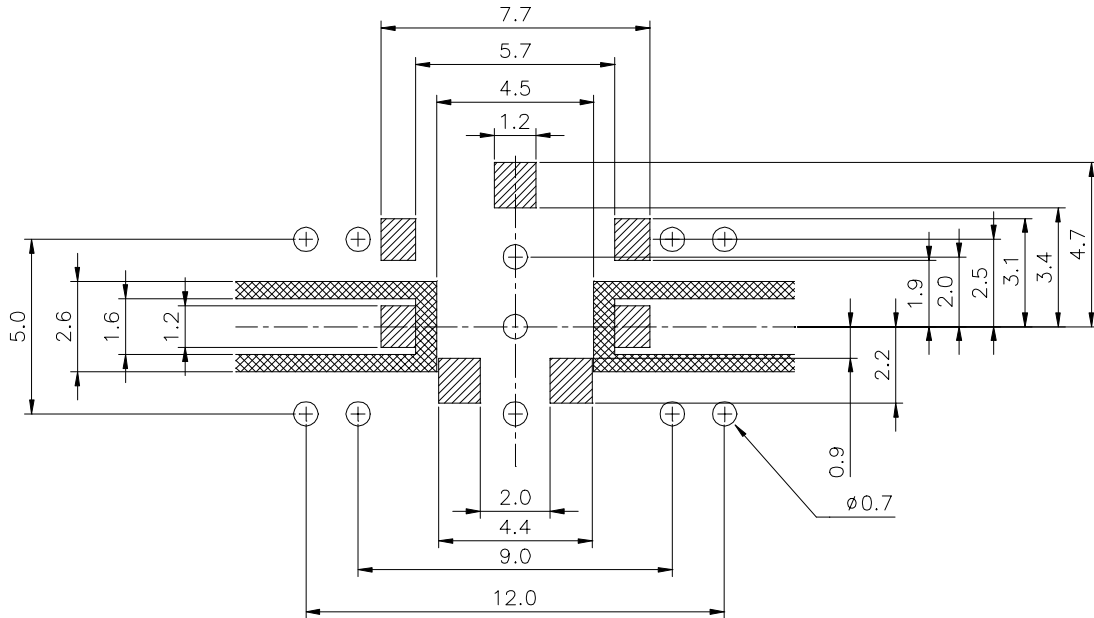
Instrument : WILTRON 37269A



Toko, INC.

PCB Recommended Pattern For Dielectric Filter

TOKO P/No : TDFM1B-2450T-10



 Parts of not coppered.
(Other parts are coppered)

 Soldering parts.

Back plane is all Coppered.
All holes are plated-through holes.

SUBSTRATE MATERIAL:

BT Resin CCL-H870 t=0.9mm.

CCI-H870's typical dielectric constant is 3.6 at 1GHz.

CAUTION:

All terminals of this filter are connected to GND.

Therefore, it must be used without DC voltage.