



NBEMS Program Setup

Download the three components of NBEMS (fldigi, flwrap and flmsg) here:

<http://www.w1hkj.com/download.html>

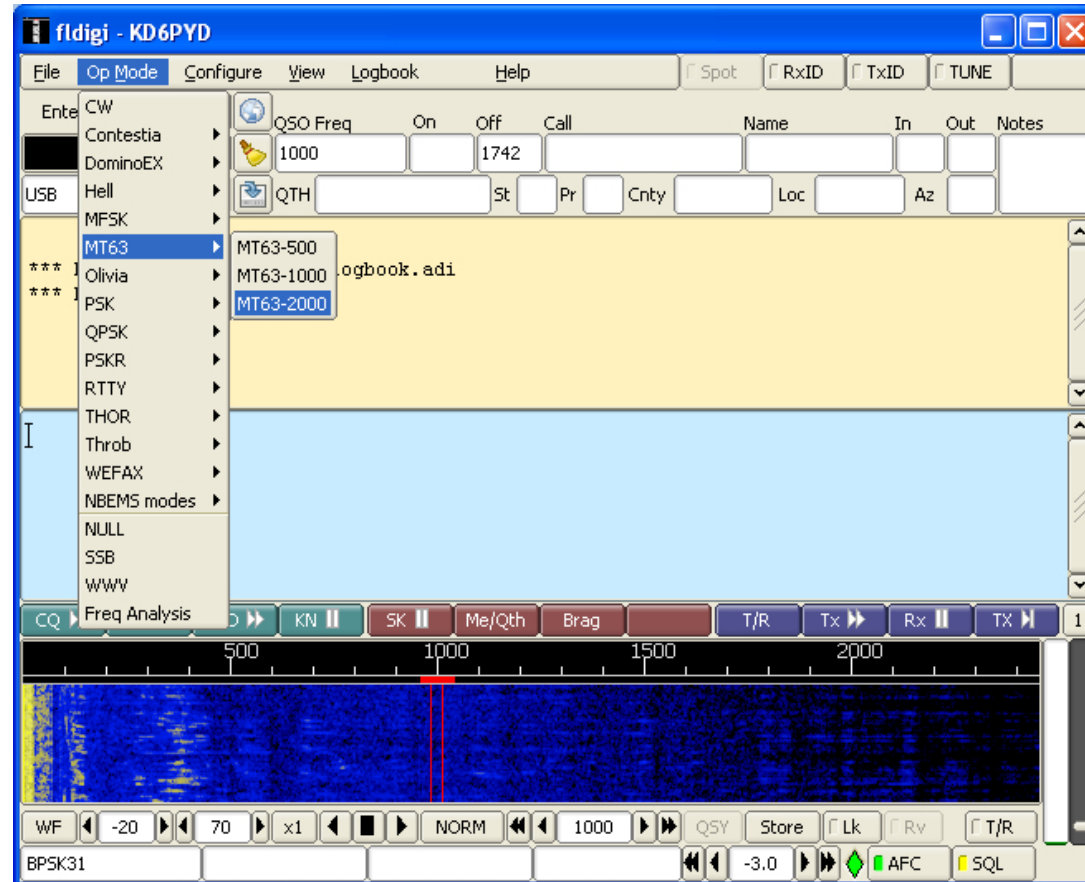
These programs are free, and there are versions for Windows, Macs and Unix platforms.

A demo can be found on YouTube:

<http://www.youtube.com/watch?v=SWZ2vKWSiIE>

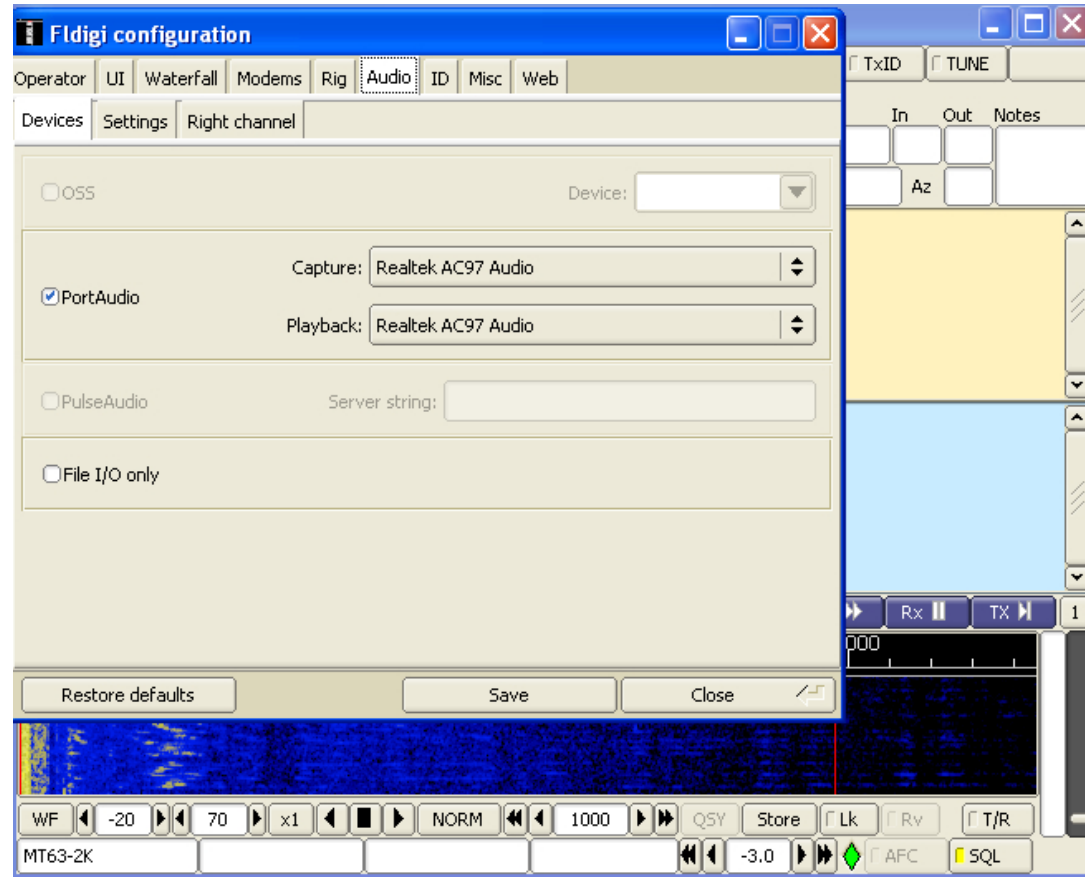
Note: This demo uses an older version of the program but you'll get the idea how to setup your programs.

Setup and Configuration FLDIGI



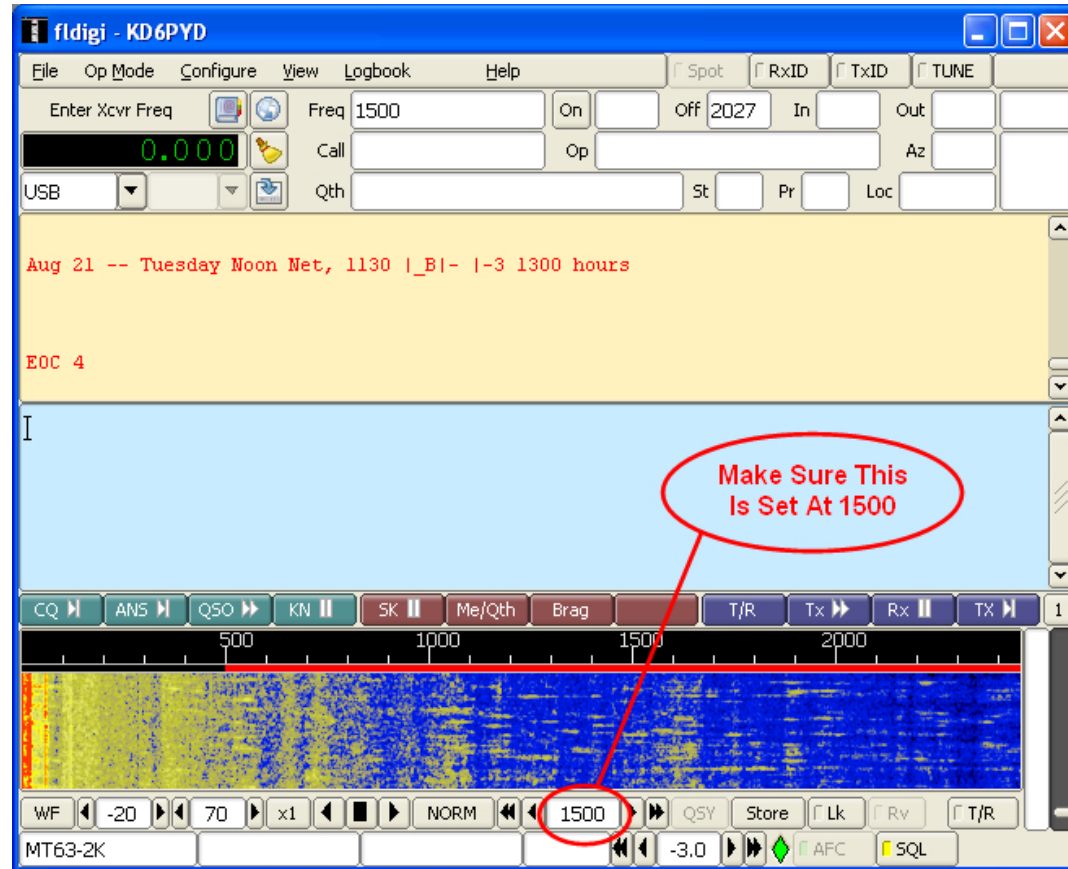
Configure program to MT-63 2000

Setup and Configuration FLDIGI



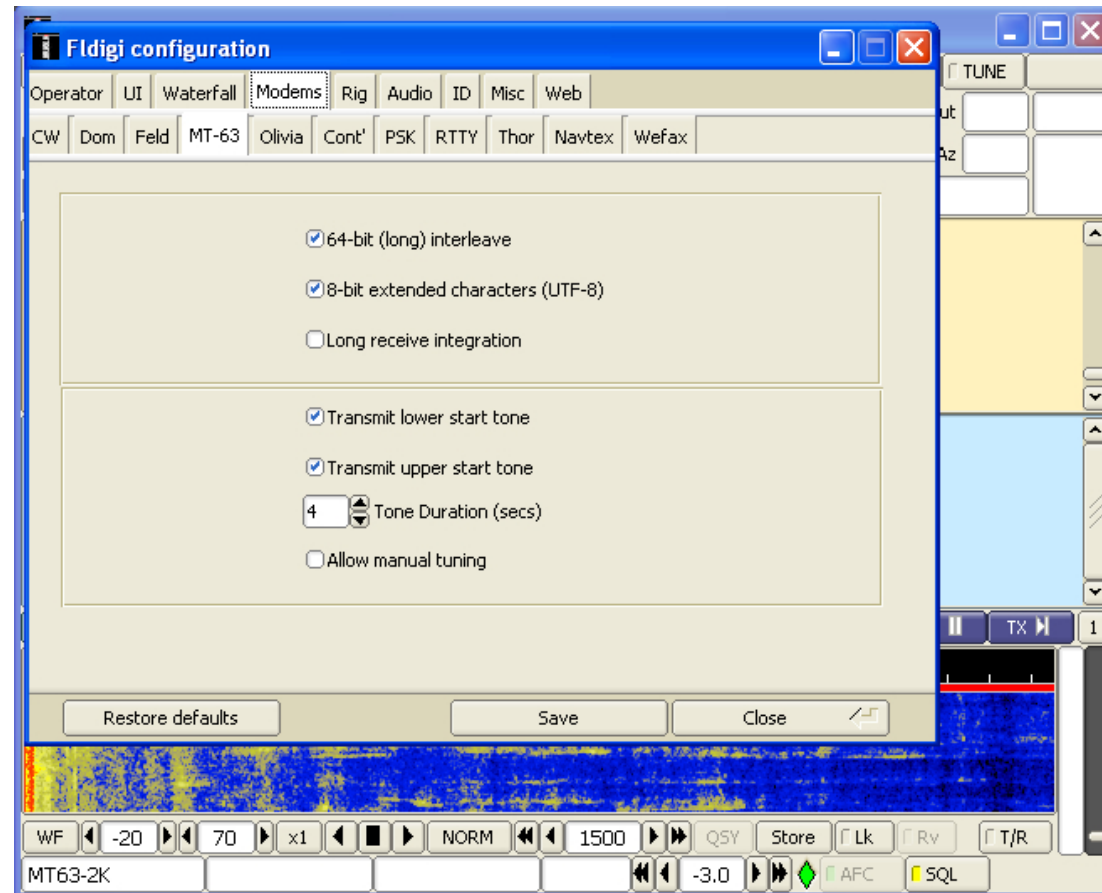
Configure sound card to the one that is being used on your computer

Setup and Configuration FLDIGI



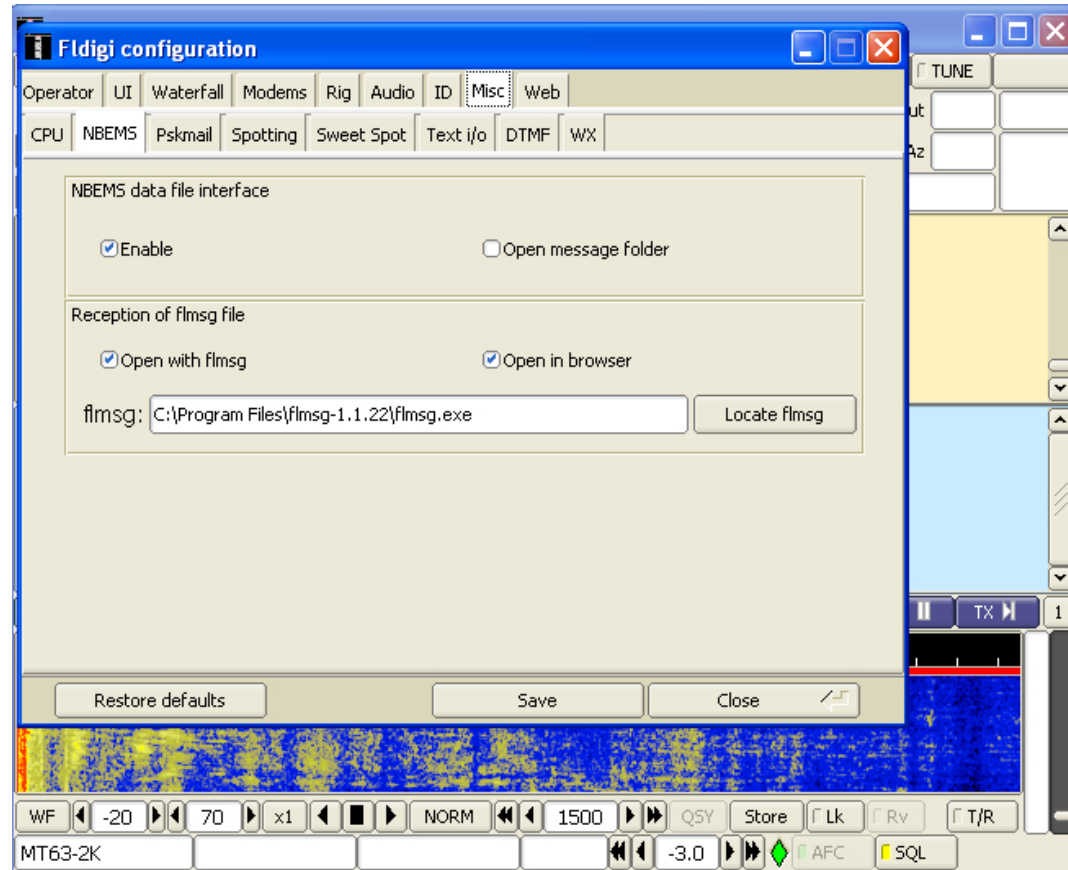
Center the waterfall frequency to 1500

Setup and Configuration FLDIGI



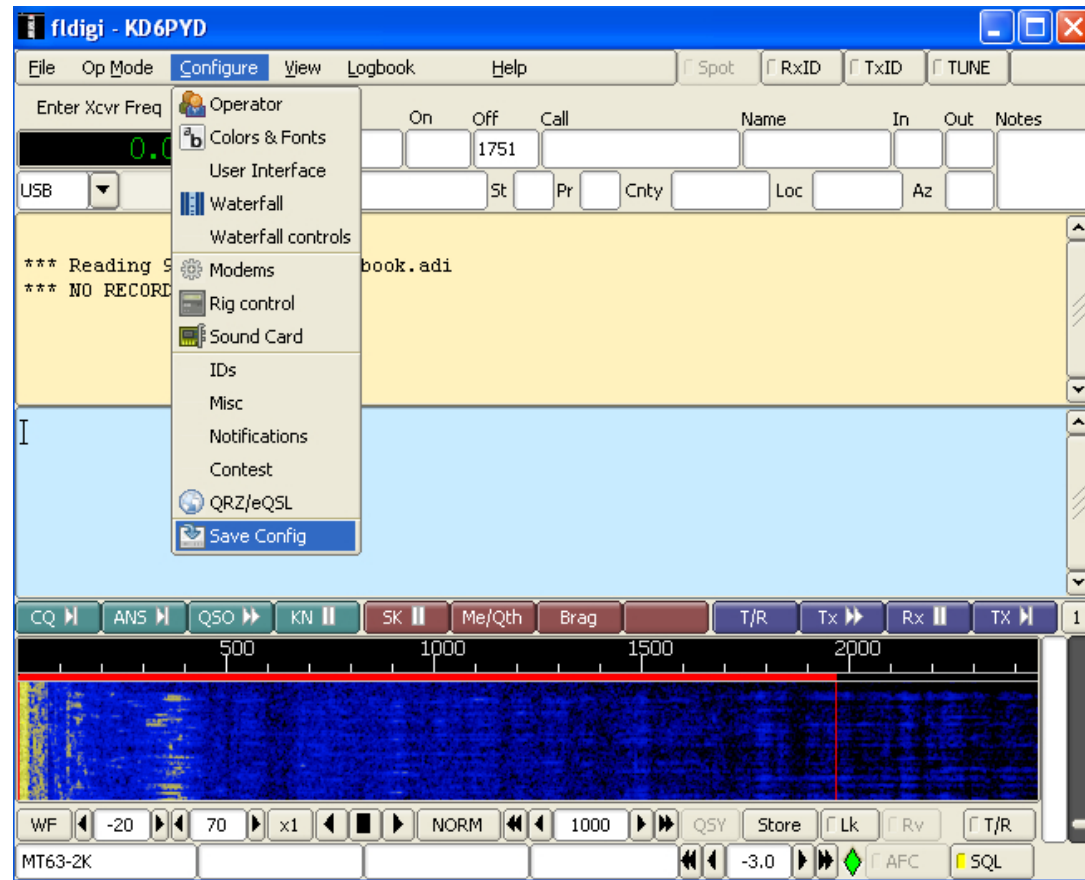
Configure the modem as shown

Setup and Configuration FLDIGI



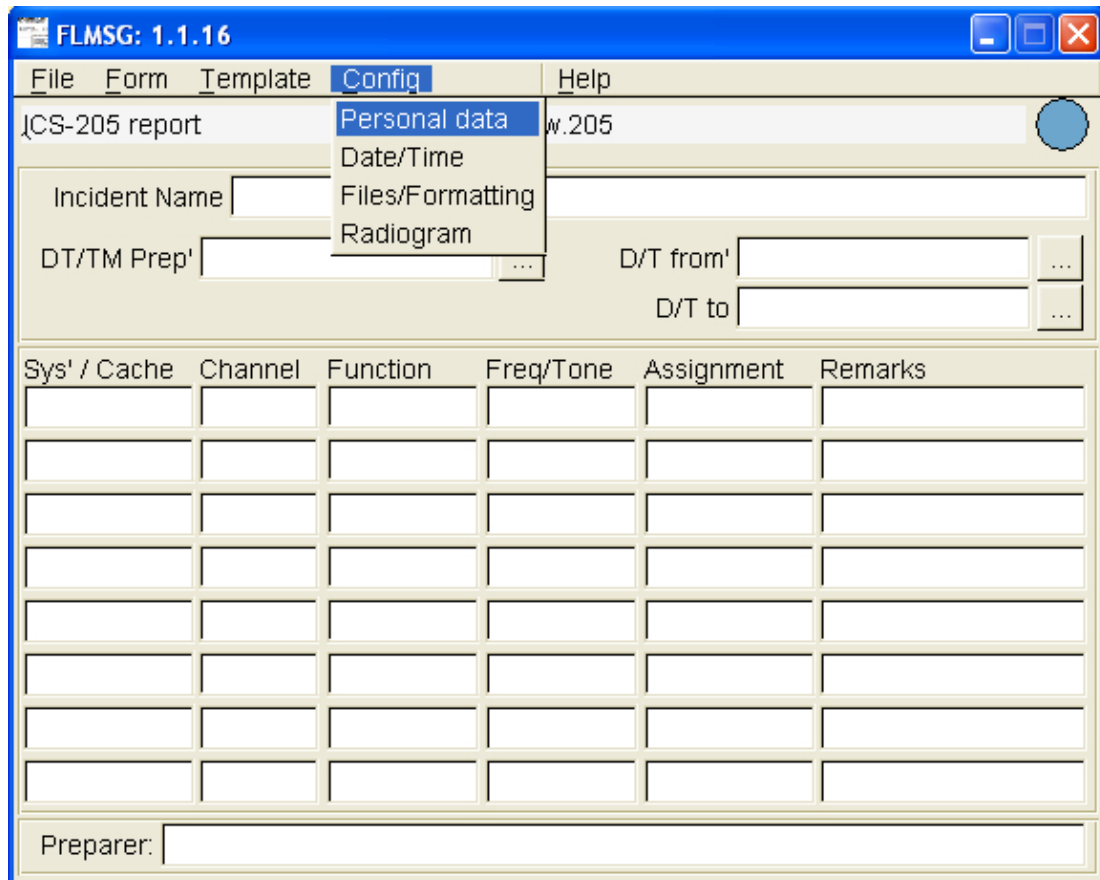
Configure NBEMS as shown. Location of the flmsg program may differ from the shown location

Setup and Configuration FLDIGI



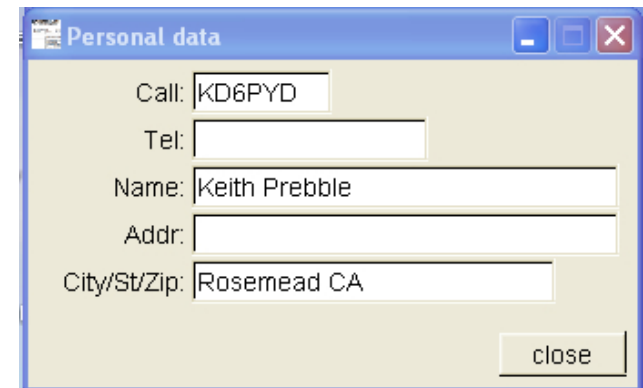
Save your configuration otherwise your changes will be lost

Setup and Configuration FLMSG



The main window of the FLMSG application, version 1.1.16, is shown. It features a menu bar with 'File', 'Form', 'Template', 'Config', and 'Help'. The 'Config' menu is open, showing options: 'Personal data', 'Date/Time', 'Files/Formatting', and 'Radiogram'. The 'Personal data' option is selected. The main area contains several input fields: 'Incident Name', 'DT/TM Prep', 'D/T from', and 'D/T to'. Below these is a table with columns: 'Sys' / Cache', 'Channel', 'Function', 'Freq/Tone', 'Assignment', and 'Remarks'. At the bottom, there is a 'Preparer:' field.

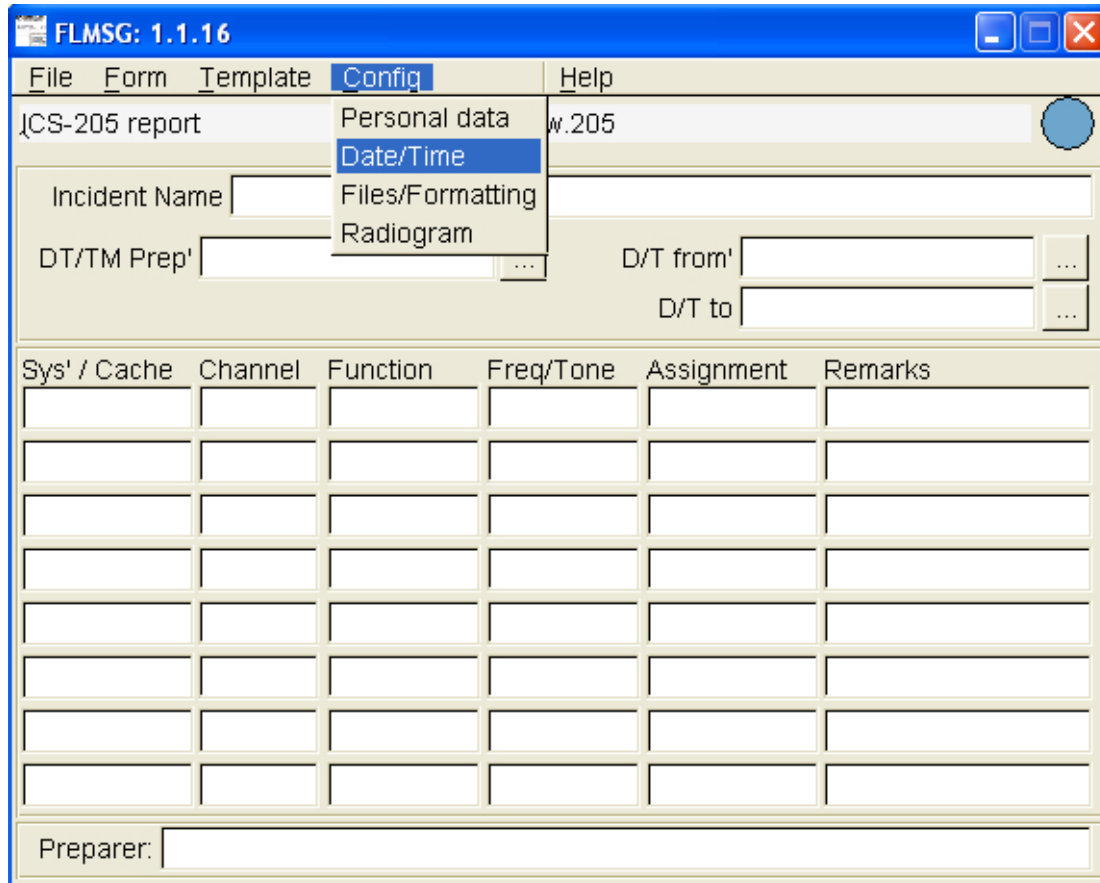
Sys' / Cache	Channel	Function	Freq/Tone	Assignment	Remarks



A dialog box titled 'Personal data' is shown. It contains the following fields: 'Call:' with the value 'KD6PYD', 'Tel:', 'Name:' with the value 'Keith Prebble', 'Addr:', and 'City/St/Zip:' with the value 'Rosemead CA'. A 'close' button is located at the bottom right.

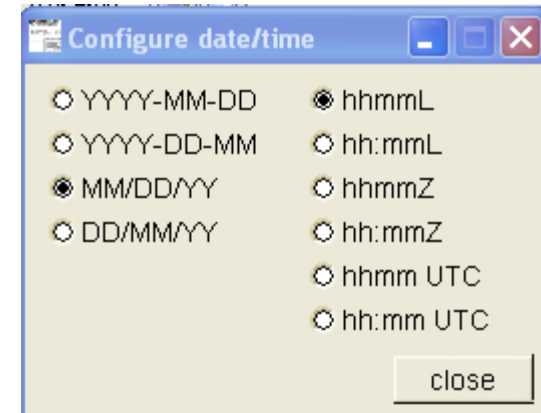
Enter the personal info that you desire

Setup and Configuration FLMSG



The main window of the FLMSG application, version 1.1.16, is shown. It features a menu bar with 'File', 'Form', 'Template', 'Config', and 'Help'. The 'Config' menu is open, showing options: 'Personal data', 'Date/Time' (highlighted), 'Files/Formatting', and 'Radiogram'. The 'Date/Time' configuration options include 'Incident Name', 'DT/TM Prep', 'D/T from', and 'D/T to'. Below these is a table with columns: 'Sys' / Cache', 'Channel', 'Function', 'Freq/Tone', 'Assignment', and 'Remarks'. At the bottom is a 'Preparer:' field.

Sys' / Cache	Channel	Function	Freq/Tone	Assignment	Remarks



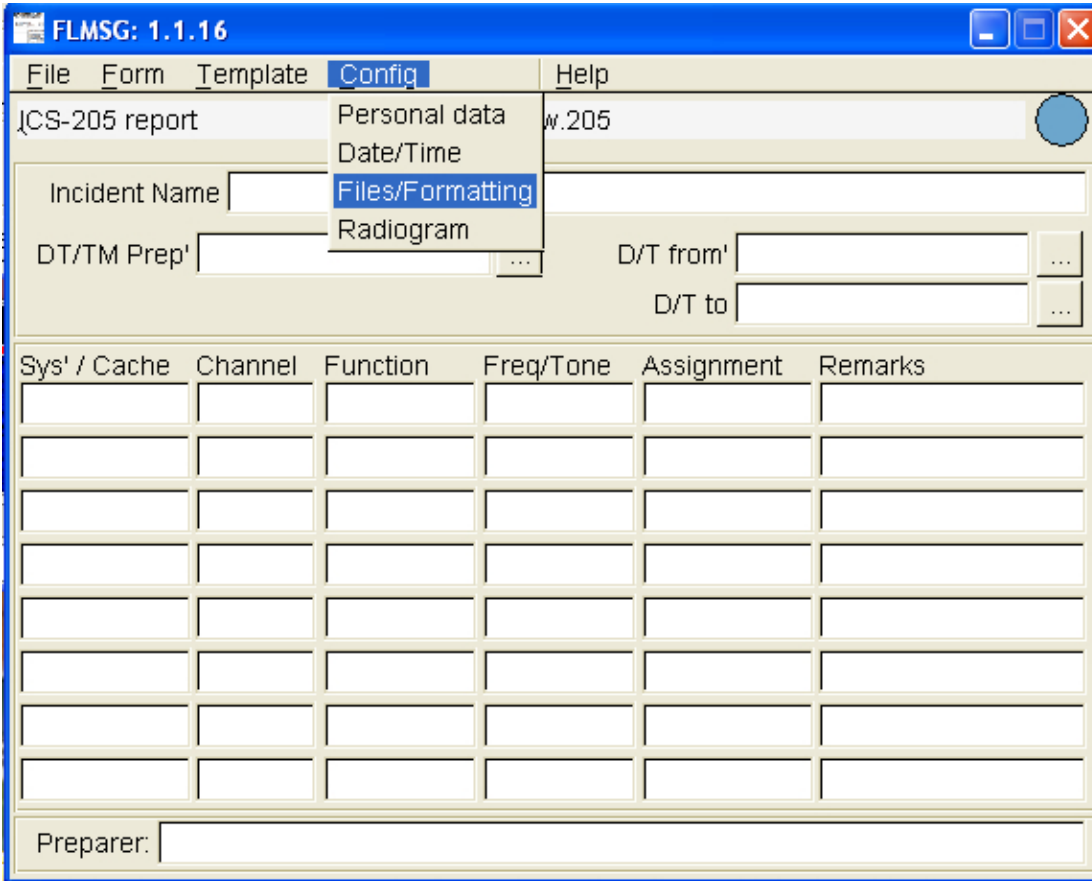
The 'Configure date/time' dialog box is shown. It contains two columns of radio button options for date and time formats. The 'close' button is at the bottom right.

<input type="radio"/> YYYY-MM-DD	<input checked="" type="radio"/> hhmmL
<input type="radio"/> YYYY-DD-MM	<input type="radio"/> hh:mmL
<input checked="" type="radio"/> MM/DD/YY	<input type="radio"/> hhmmZ
<input type="radio"/> DD/MM/YY	<input type="radio"/> hh:mmZ
	<input type="radio"/> hhmm UTC
	<input type="radio"/> hh:mm UTC

close

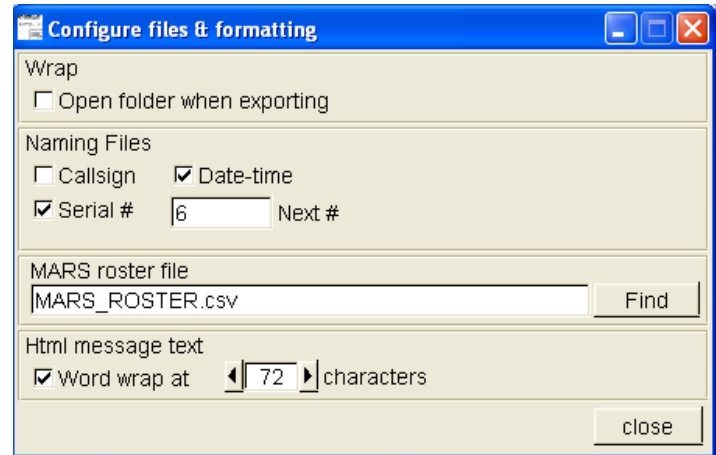
Setup the date/time configuration

Setup and Configuration FLMSG



The main window of FLMSG: 1.1.16. The title bar shows 'FLMSG: 1.1.16'. The menu bar includes 'File', 'Form', 'Template', 'Config', and 'Help'. The 'Config' menu is open, showing options: 'Personal data', 'Date/Time', 'Files/Formatting' (highlighted), and 'Radiogram'. The main area contains several input fields: 'Incident Name', 'DT/TM Prep', 'D/T from', and 'D/T to'. Below these is a table with 6 columns: 'Sys' / Cache', 'Channel', 'Function', 'Freq/Tone', 'Assignment', and 'Remarks'. The table has 8 empty rows. At the bottom is a 'Preparer:' field.

Sys' / Cache	Channel	Function	Freq/Tone	Assignment	Remarks



The 'Configure files & formatting' dialog box. It has a title bar with standard window controls. The 'Wrap' section has a checkbox for 'Open folder when exporting'. The 'Naming Files' section has checkboxes for 'Callsign' and 'Date-time' (checked), and a checkbox for 'Serial #' (checked) with a text field containing '6' and the label 'Next #'. The 'MARS roster file' section has a text field containing 'MARS_ROSTER.csv' and a 'Find' button. The 'Html message text' section has a checkbox for 'Word wrap at' (checked) with a text field containing '72' and the label 'characters'. A 'close' button is at the bottom right.

Configure the message file naming format

**Now Try Sending Some
Messages
Questions?**