

# Low Pass Filter

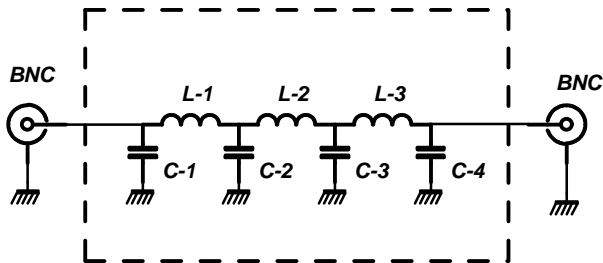
Mount this circuit in a metal box.

C-1 = C-4 = 33pF

C-2 = C-3 = 56pF

L-1 = L-3 = 7 Turns #20 AWG in 1/8"

L-2 = 8 Turns #20 AWG in 1/8"



*All capacitor are ceramic or mica (better)*

*For coils, you ou can use copper wire or silver wire (better)*