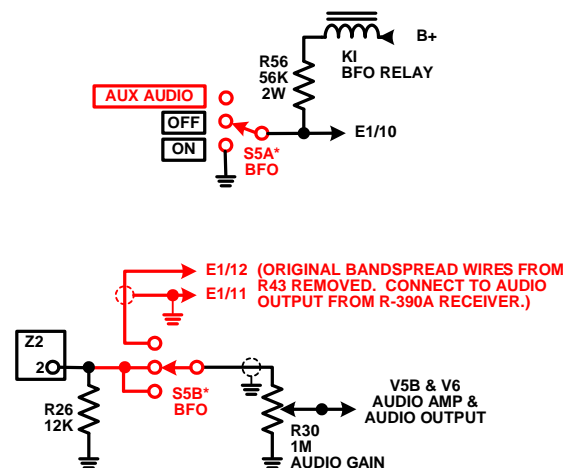
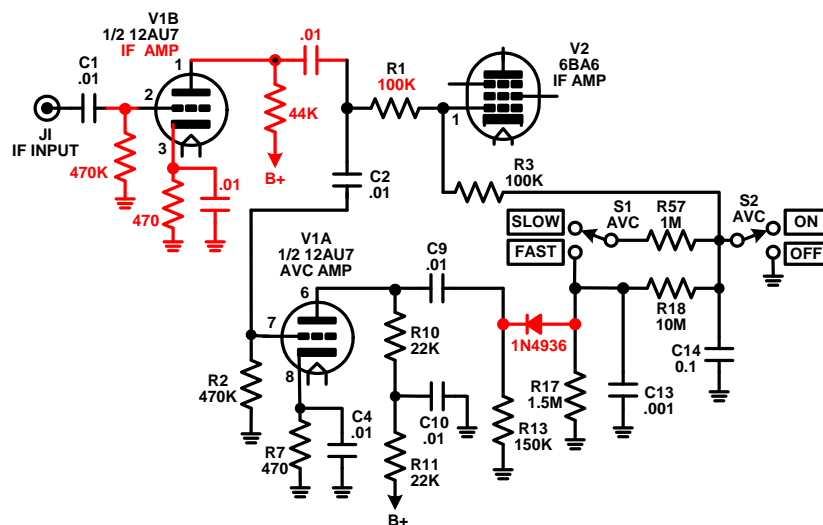


ORIGINAL CIRCUITS



*New S5 switch: 2-pole, 3-position, rotary;
Centralab type PA-1003, or equal.

MODIFIED CIRCUITS (CHANGES IN RED)

CV-591A/URR MODS

BY KH6GRT

1. The first mod involves adding an additional amplifier in the IF signal path to the CV-591. This mod allows the converter to run at less than max audio gain to achieve a comfortable listening level. This mod rewires V1B which is originally used as a diode and substitutes a silicon fast recovery diode in its place.

2. The second mod changes the BFO switch from a 2-position to a 3-position switch. The extra position connects the low-level audio signal from a R-390A to the audio stages. The allows listening to a wider bandwidth signal from the R-390A over that afforded by just turning off the CV-591 BFO. The extra position need not be indicated on the front panel so as to retain original appearance.