



**TERRAIN LIMITED PREDICTED COVERAGE
"SHADOW MAP"**

RX ANTENNA 10M HAGL

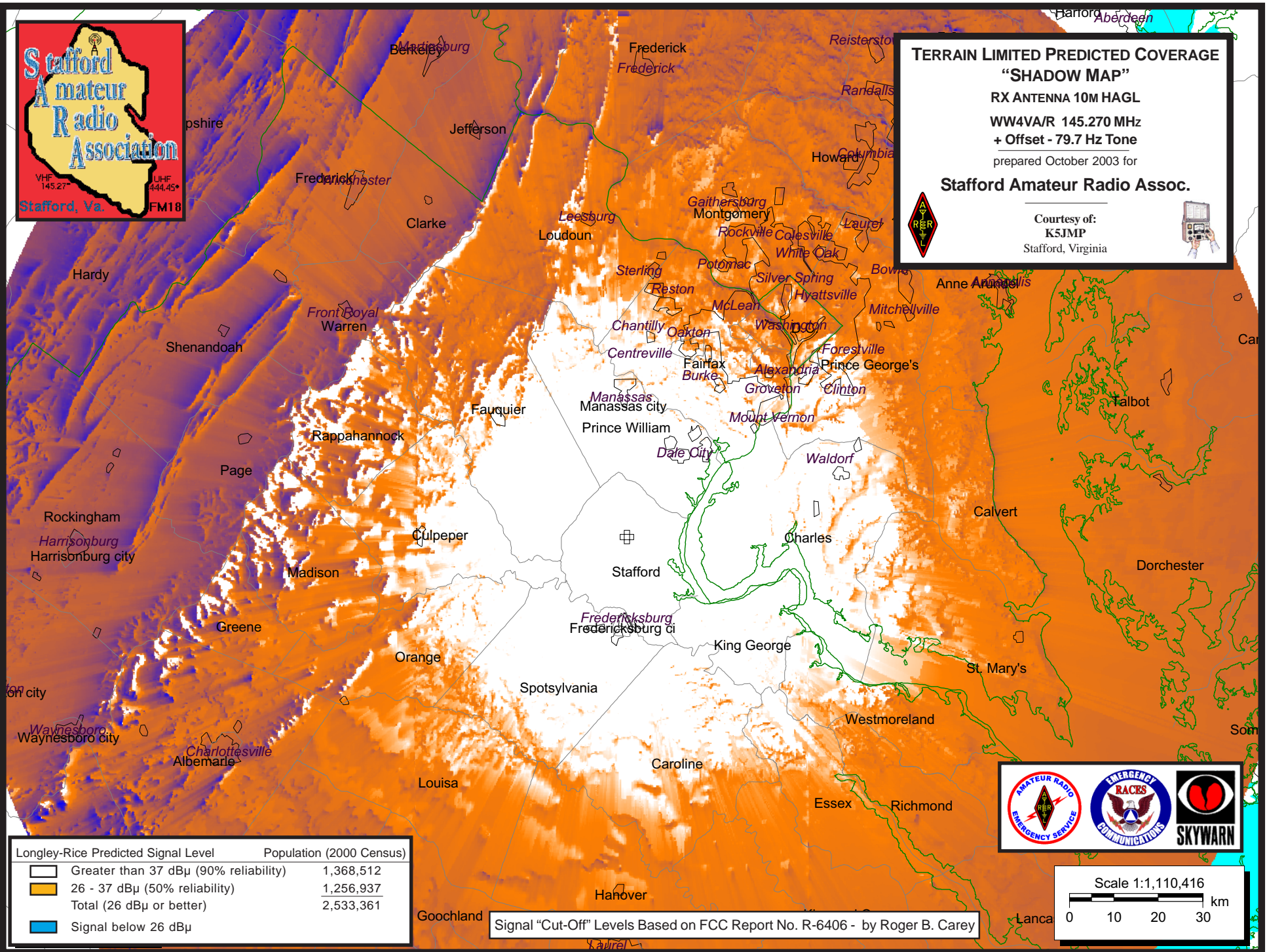
WW4VA/R 145.270 MHz

+ Offset - 79.7 Hz Tone

prepared October 2003 for

Stafford Amateur Radio Assoc.

Courtesy of:
K5JMP
Stafford, Virginia



Longley-Rice Predicted Signal Level Population (2000 Census)

	Greater than 37 dBμ (90% reliability)	1,368,512
	26 - 37 dBμ (50% reliability)	1,256,937
	Total (26 dBμ or better)	2,533,361
	Signal below 26 dBμ	

Signal "Cut-Off" Levels Based on FCC Report No. R-6406 - by Roger B. Carey

