

Linux For Hams Class #2

Orv Beach

W6BI

Training Chair

Southern California Linux Expo

Training Plan – Class #2

- Some command line basics
- How to add third-party repositories
- How to install updates
- How install new packages (programs)
- An overview of KDE Plasma (the UI)

Command Line Basics

- Copy & Paste in a GUI
 - Copy – `ctl-c`; or right-click, Copy
 - Cut – `ctl-x`; or right-click, Cut
 - Paste – `ctl-v`; or right-click, Paste

Command Line Basics

- Copy & Paste on the command line
 - Two methods
 - Windows-ish
 - Unix method
 - Can mix both methods – very useful!

Copy & Paste - On the command line

- Windows-ish method :
 - Copy – Highlight, right-click, select Copy or: `ctl-Shift-c`
 - Cut – N/A
 - Paste – right-click, select Paste or: `ctl-Shift-v`

Copy & Paste - On the command line

- Unix method
 - Copy – Highlight
 - Cut – N/A
 - Paste –
 - Click cursor (left mouse click) where you want to paste
 - Center-mouse click to paste
 - That's it!

Command Line Basics

Same across almost all Linux distros

★remember – case CoUnTs!

- `su / su - <enter>`
`<password>`
- `exit`
- `cd <dirpath>`
- `rm <filename>`
- `mkdir <dirname>`
- `rmdir <dirname>*`
- `ssh <hostname or ip address>`
- `pwd (print working dir)`
- `date`
- `man <command> (q to quit)`
- `touch <filename>`
- `less <filename>(q to quit)`
- `yum (or dnf) <command>`
`<package>`
- `locate <filename>`
- `which <program>`

Text Editors

- GUI, TUI*, CLI
 - GUI:
 - kate (not installed by default)
 - gedit (not installed by default)
 - TUI:
 - joe (not installed by default)
 - nedit (not installed by default)
 - CLI
 - vi / vim
 - Emacs

*Text-based User Interface

Adding Repositories (RPM Fusion)

- <http://rpmfusion.org/>
- How to enable repository
 - GUI
 - Follow instructions on web page for both free & non-free repositories
 - CLI
 - Copy & paste one command from web page to console!

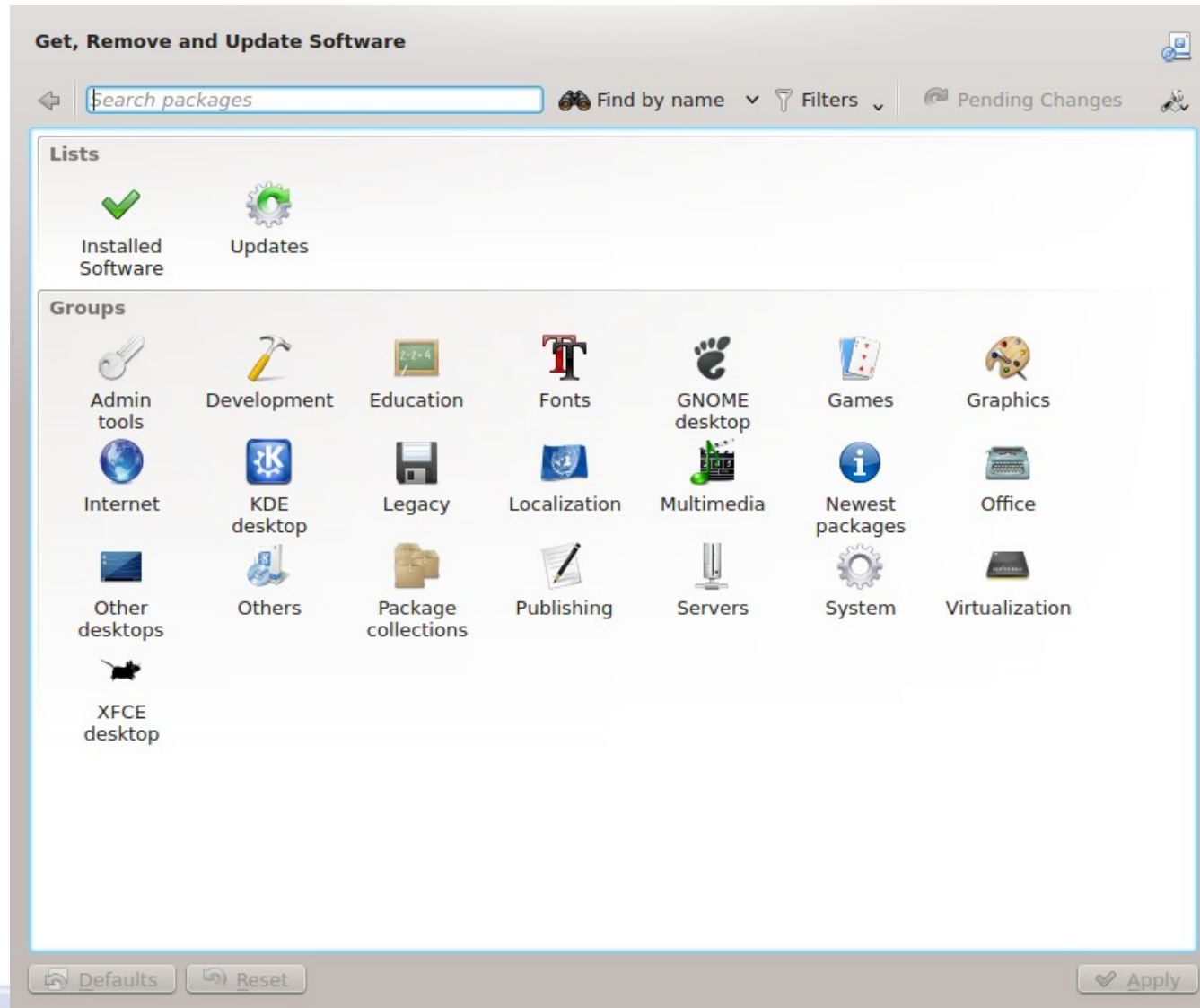
How to Install Updates



- Graphical – click on the gear:
- Command line: `yum (or dnf) update`

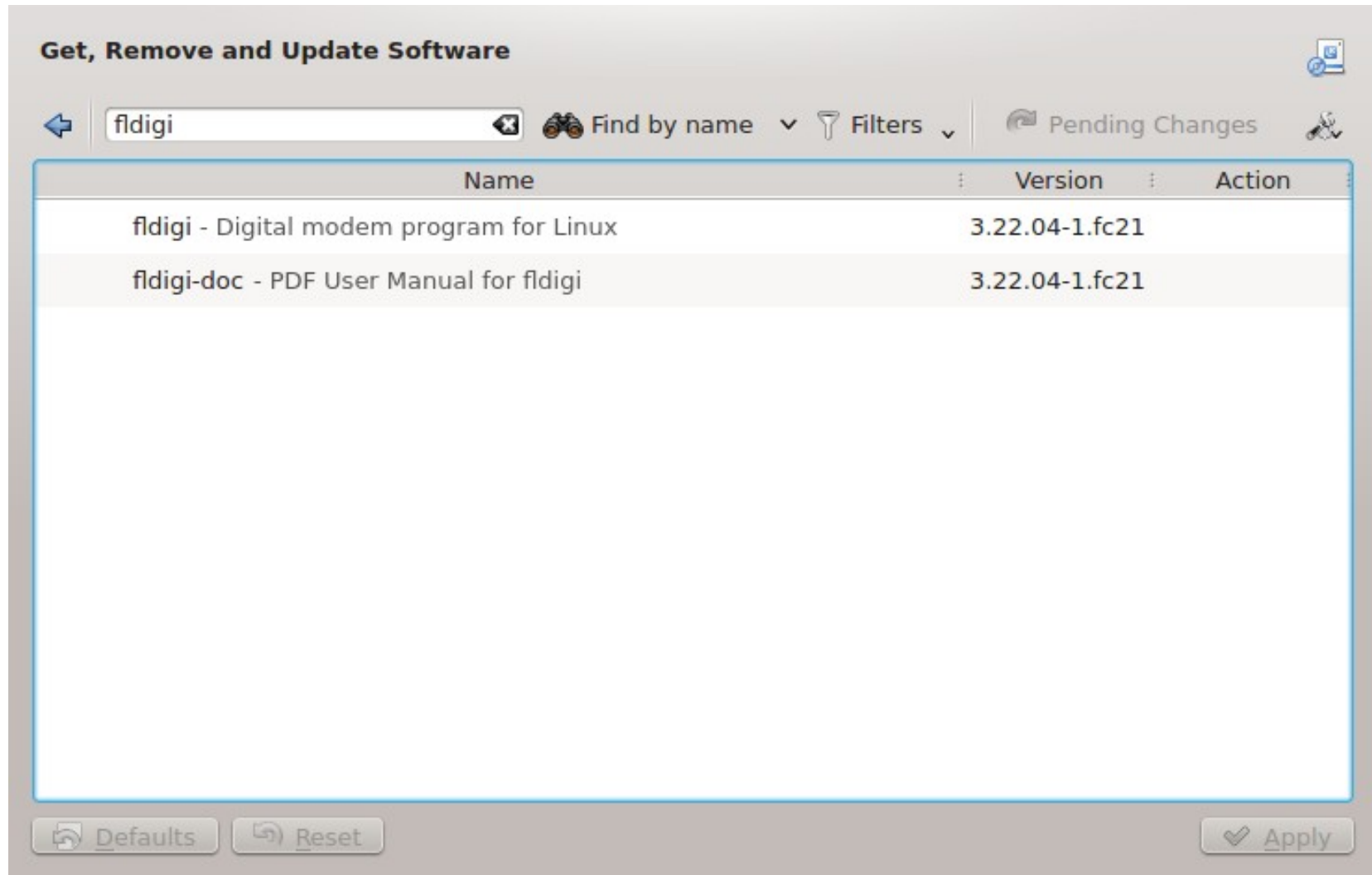
How to Install Packages

Graphical – use Apper



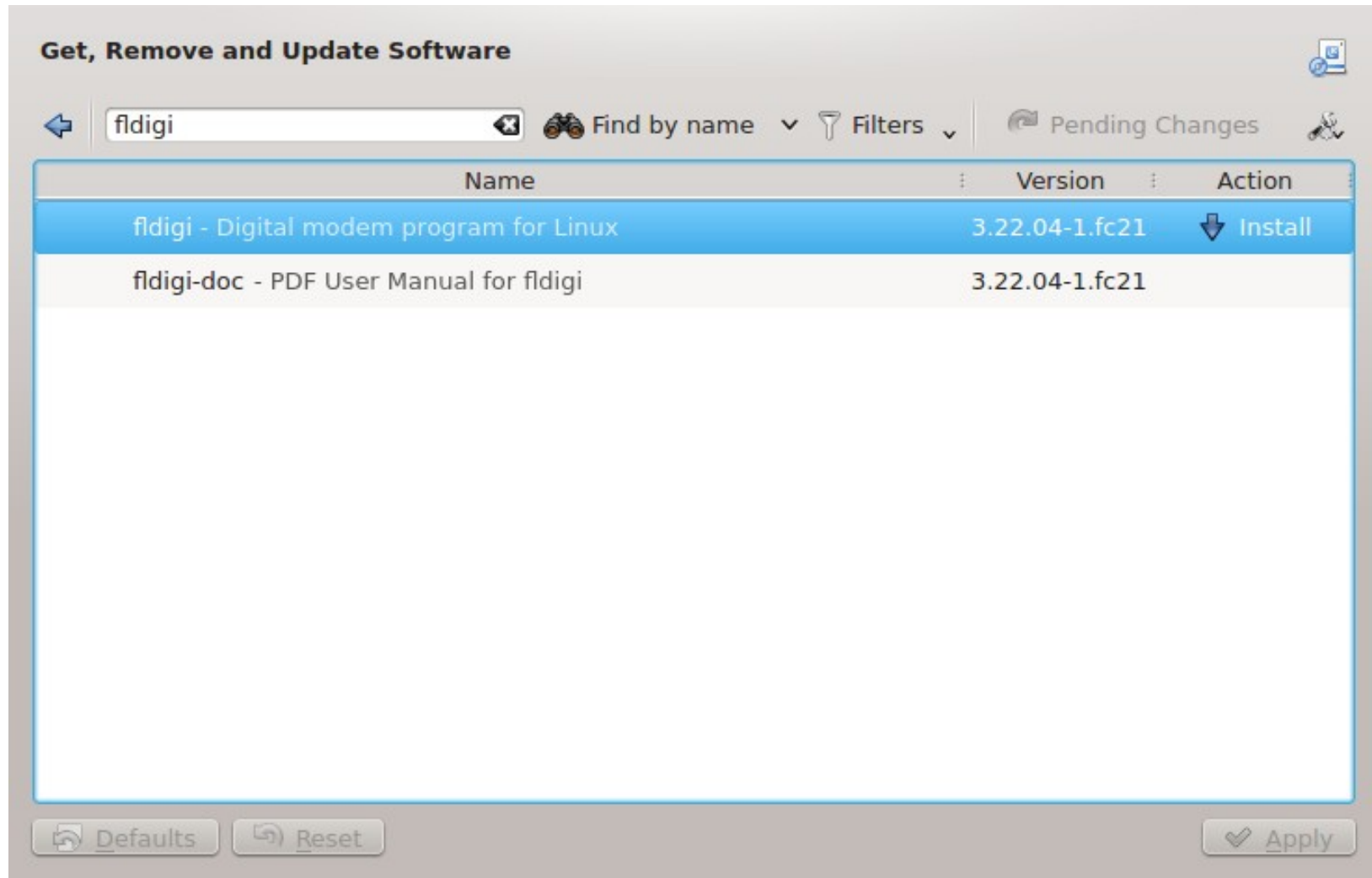
How to Install Packages

Graphical – use Apper



How to Install Packages

Graphical – use Apper



How to Install Packages

Command line

```
yum / dnf install <packagename> <second_packagename>...
```

Or:

```
yum (or dnf) install *fldgi*
```

Packages to Add

- Highly Desirable

- libreoffice*
- kate
- firefox
- gstreamer plugins
- vlc

* `dnf -y groupinstall libreoffice`

- Optional

- Google Chrome**
- Skype***
- Ham stuff
- gimp

** in Chrome repository

***not in any repository

Plasma (demos)

- Application Launcher: kickoff
- File manager: dolphin
- File viewer/editor: gwenview
- CD/DVD burner/ripper: k3b
- Desktop right-mouse-click menu
- krunner (via Alt-F2)
- Configurable System Tray

Next Up

- IP addresses, default gateways, subnets and DNS, oh my!
- Static versus Dynamic IP addressing
- Other stuff...



- <http://socallinuxexpo.org>
- This weekend (Thursday-Sunday)
- Now in its 13th year
- Expecting 3,000 people
- Mix of professionals and enthusiasts
- Tons of presentations
- Expo floor with over 100 booths
- I can get you in for free :-)





