

# JT65-HF Image Controller Lite

1. Since this program was troublesome in setting up FTP, in order to make the program compact the overlapping part is deleted.
2. If you are already using JT65-HF Image Controller, please make sure that this Setup is installed in the same folder to inherit existing server-related data. In a new folder When installing, it will be reset again.
3. If you are already JT65-HF Image Controller user and installed in the same folder.
  - a. After the installation is complete, you can start the icon called Controller\_Lite on the desktop.
  - b. After starting, you will be prompted to input callsign, so please input and press OK button
  - c. After a while, the following screen will be displayed.

The screenshot shows the 'Set' configuration window for JT65-HF Image Controller Lite. The window title is 'JT65 Lite JT65-HF Image Controller Lite ver 20B/Ma...'. The 'Set' tab is selected, showing various configuration options. The 'MyCall' field is set to 'XX0XX'. The 'Japanese' checkbox is unchecked. The 'JT65-HF Log Dir' is set to 'C:\JT65-HF\_Controller'. The 'PSK Front Dir' is set to 'C:\VariFront'. The 'WSJT-X Log Dir' is set to 'C:\Users\PCUser\AppData\Local\WSJT-X'. The 'OnAir Frequency' is set to 'Choose Frequency'. Under 'Selection of Program', 'JT65HF' is selected. Other options include 'Who is on air Hybrid OK+4' (checkbox), 'RX Image Popup', 'HTML Popup', 'Video Popup', 'Save TX Image', 'QSO Mode', 'PSK', 'Automatic Report', 'Upload Digisite', and 'Use Digisite My Server'. At the bottom, there are fields for 'His Call', 'Name', 'SNR', 'HisData', 'Digi:', 'My:', 'Free Text' (checkbox), and 'My Report'. A text area at the bottom contains the message: '<<< Welcome to JT65-HF Image Controller>>>' and '<<< Ready for start !!! >>>'.

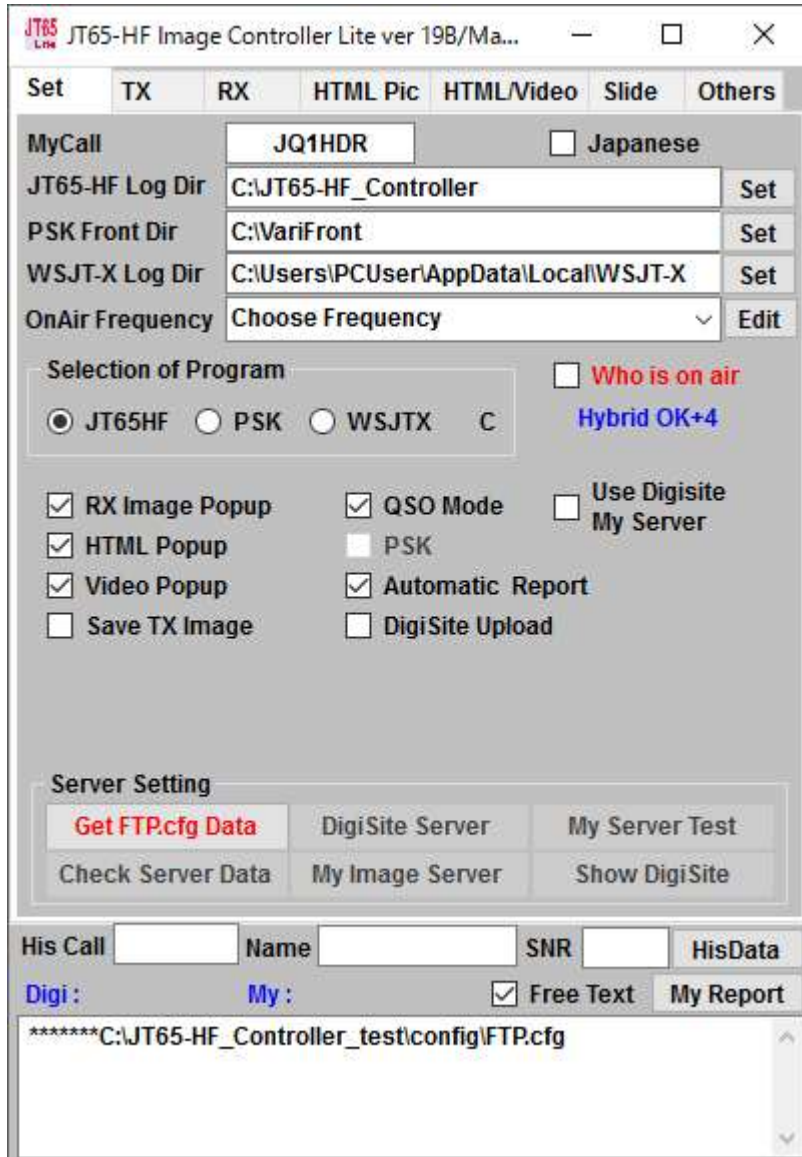
The displayed item should already have been set by JT65 - HF Image Controller, but please check again and make correction if it is wrong.

If you are not using DigiSite, in this state, make sure that you are connected to the Internet and check the Who is on air to use only HYBRID.

If you are using DigiSite please check below to use DigiSite.

d. When using Digisite

Please check to use Digisite.



The FTP data capture button is displayed. Please click the button.

Restart instruction is issued Please restart Controller Lite.

When rebooting, all FTP data should have been set, so please confirm the setting contents by pushing the Check Server Data button, the button of the DigiSite server button, and the My server Test button.

Those who use only one digisite will be a digisite server = My image server but those who use more than two please set them separately.

In addition, since it searches for the registered name by looking for the master of Digisite, it is necessary to register the displayed Digisite.

Also, please register the My image server if you are using two or more commands with the command name of your station registered in the controller.

d. final confirmation

To actually check whether the settings are correct, you can press the My Server Test button to upload, download, delete images. Also, you can check the current digisite with the Show Digisite button.

If you can not upload images properly in these tests, you can not download, or if you can not display digisite, check the settings as there are many mistakes in the settings.

4. When not using JT65-HF Image Controller and setting it newly

a. If you check the use of Digisite and press the FTP data capture button, there is no setting value already in use, so it is necessary to set newly. The following screen will appear

b. Please leave DigiSite as a call sign Call Sign is just call sign and Space or / is not allowed.

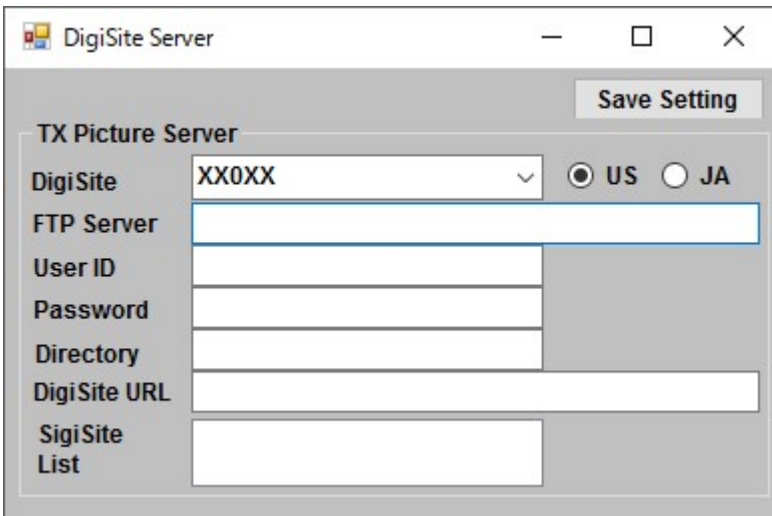
FTP Server

Use ID

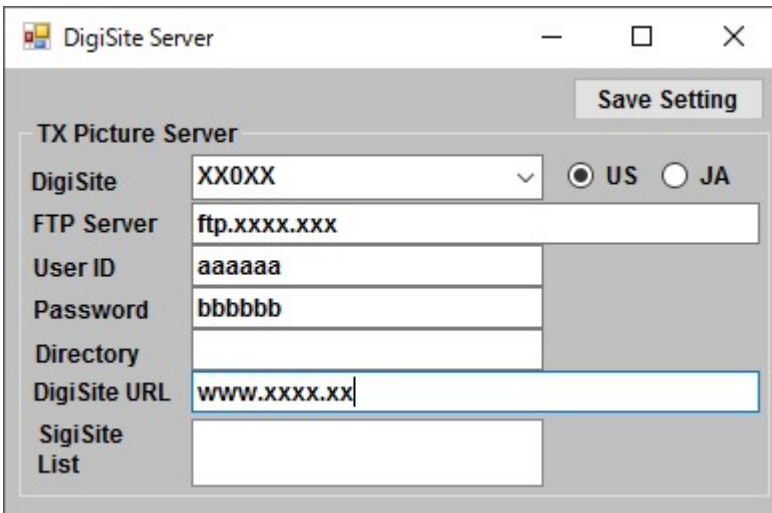
Password

Directory : When creating a new folder in the server, depending on the server, it may be necessary to log in by FTP so please check the instructions for each provider.

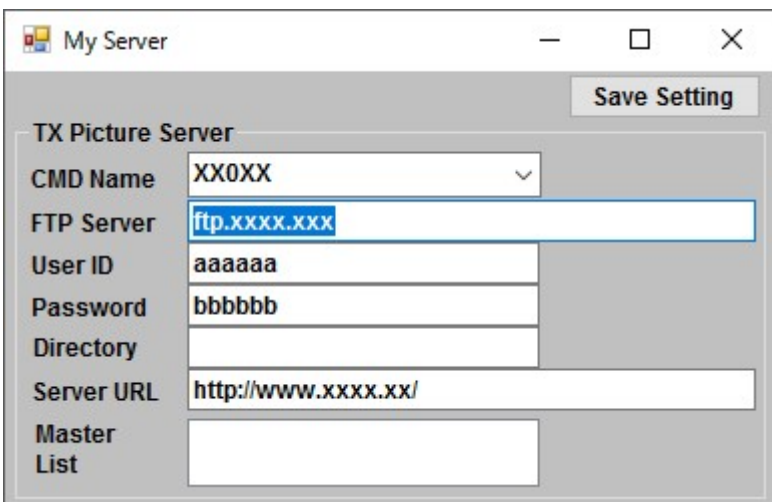
DigiSite URL: Write the digiSite URL.



c. When all the writing is completed, click the Save Setting button.



d. The following screen appears, just press the Save Setting button.



e. To actually check whether the settings are correct, you can press the My Server Test button to upload, download, delete images. Also, you can check the current digisite with the Show Digisite button.

If you can not upload images properly in these tests, you can not download, or if you can not display digisite, check

the settings as there are many mistakes in the settings.

5. Please check in Who is on air to start operation.

We have not created the manual yet, although many buttons were in previous versions, most of them We are changing to the menu system by right click. For example, right clicking the image on the TX tab will display the menu that can be done there. In addition, please do not only the TX image part but the processing necessary at that place is displayed by right click, so please make heavy use of right click.

