

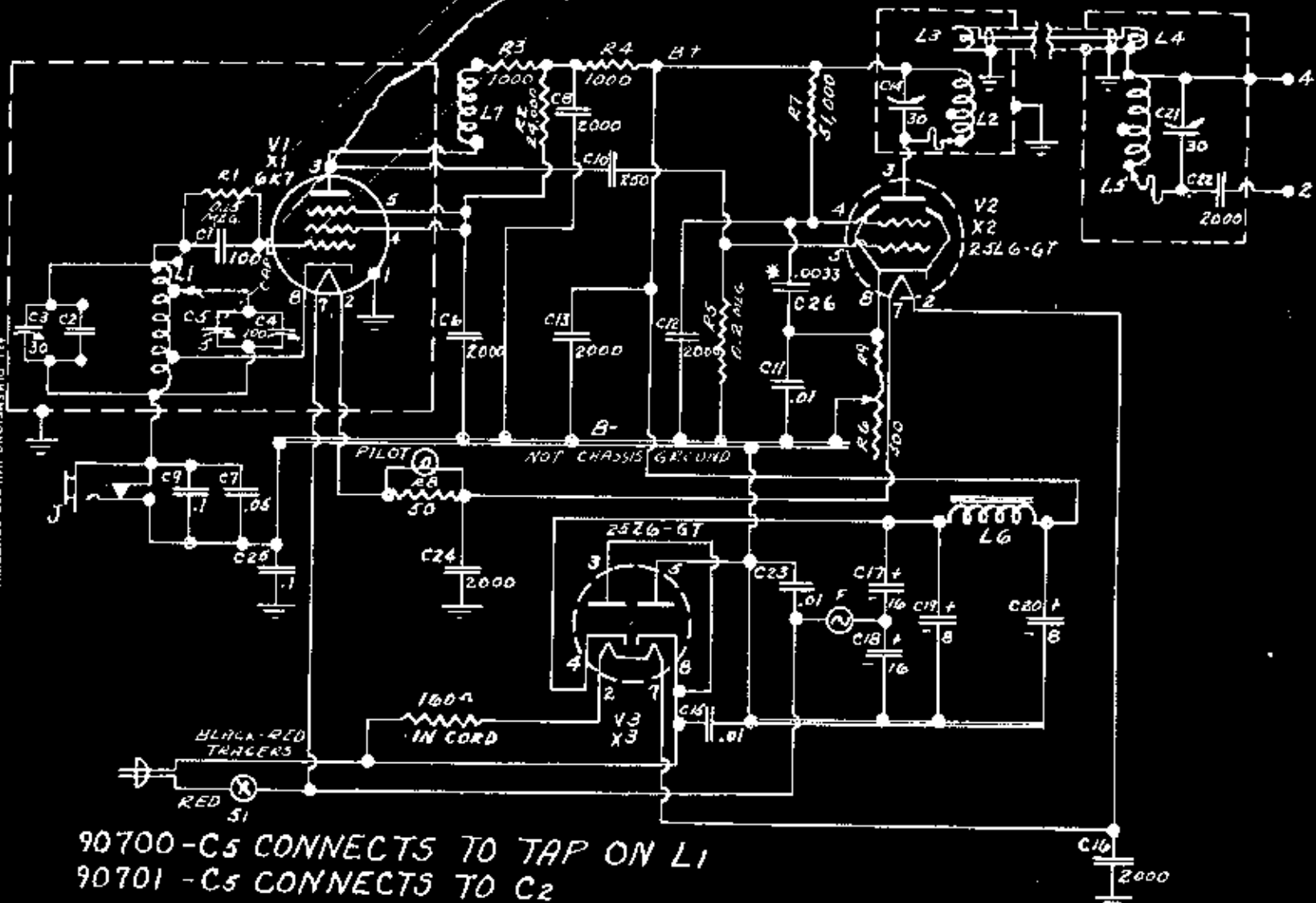
89 - C26	3-3-46	C26 wire shown to ground Changed R3 to 100 ohms
3-28-46	2	Added C26
12-26-46	1	Eliminated Cap C29 Added 2526-67 tubes 189 K.K.

DESIGNED BY **H.P.**  
 DRAWN BY **H.P.**  
**JAMES MILLEN MFG. CO., INC.**  
 MALDEN, MASS., U.S.A.

CHECKED BY **H.P.**  
 APPROVED **R.W.C.**  
**K90700**

DATE **11/39**  
**10-31-45**

ALL DIMENSIONS UNLESS OTHERWISE NOTED MUST BE HELD TO A TOLERANCE OF



90700 - C5 CONNECTS TO TAP ON L1  
 90701 - C5 CONNECTS TO C2  
 MICA CAPACITORS IN  $\mu\mu\text{fds}$  - OTHERS IN  $\mu\text{fds}$

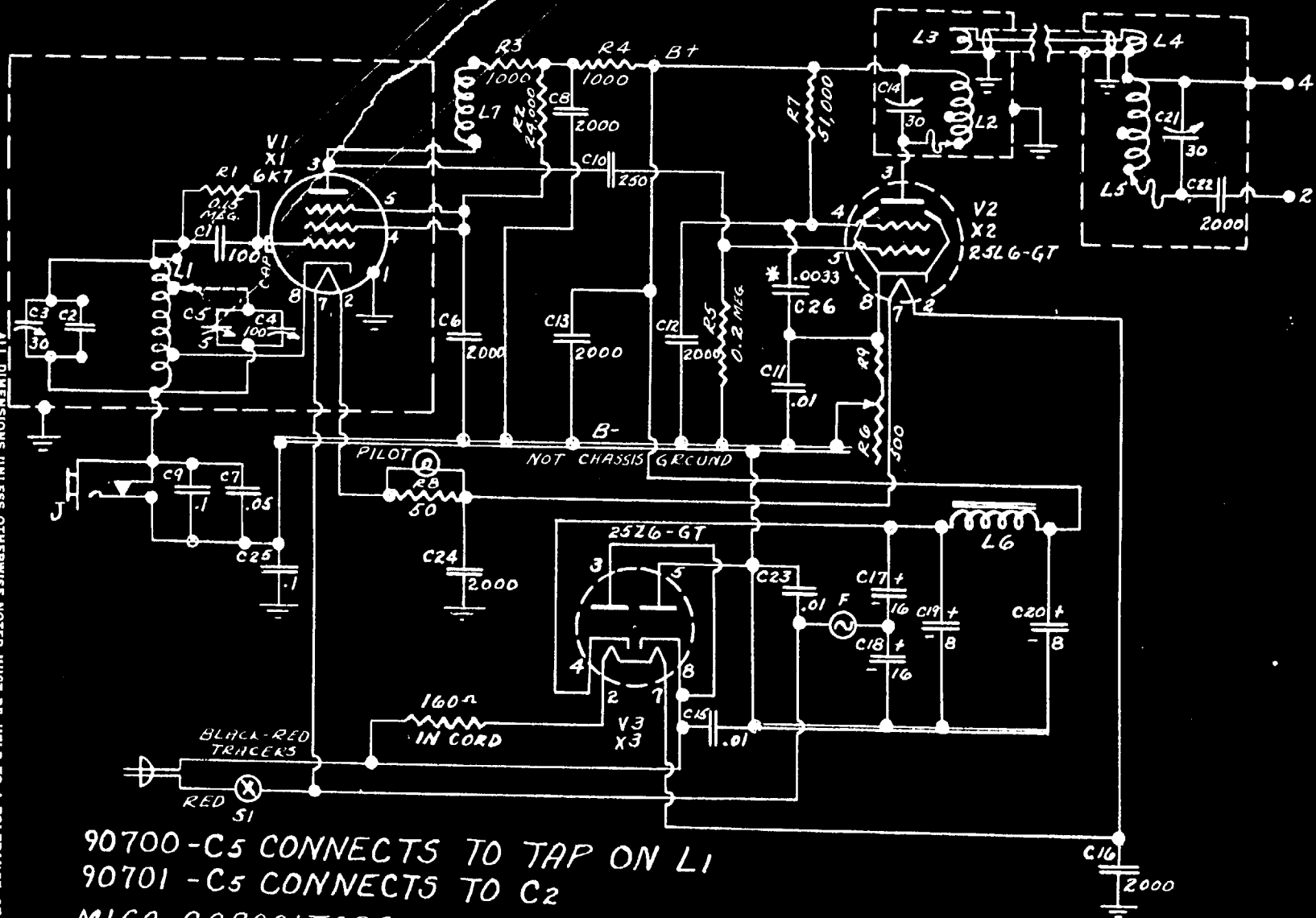
⊥ INDICATES CHASSIS GROUND

\* USED ONLY IN 90701

R9	MODEL	C2
700	90700	400 mmf
300 ohms	90701	270 mmf

THIRD ANGLE PROJECTION

THIRD ANGLE PROJECTION



ALL DIMENSIONS UNLESS OTHERWISE NOTED MUST BE HELD TO A TOLERANCE OF

**SCHEMATIC CIRCUIT DIAGRAM**  
**VARIARM 90700 OR 90701**  
 FIRST MADE FOR 90700

R9 - C26

8-3-46

C26 was shown for grid.  
 Changed R9 to 100 ohms.

3-28-46

Added C26

12-16-45

Eliminated C29  
 Added 90701 notes + R9 2K

DESIGNED BY **H.P.**

DRAWN BY **H.P.**

**JAMES MILLEN MFG. CO., INC.**  
 MALDEN, MASS., U.S.A.

CHECKED BY **H.A.**

APPROVED **R.W.C.**

**K90700**

1/39

DATE  
 10-31-45

90700 - C5 CONNECTS TO TAP ON L1  
 90701 - C5 CONNECTS TO C2  
 MICA CAPACITORS IN  $\mu$ ufds - OTHERS IN ufds

$\perp$  INDICATES CHASSIS GROUND

\* USED ONLY IN 90701

R9	MODEL	C2
100	90700	400 mmf
300 ohms	90701	270 mmf