

15 FEB 64

The most general uniform linear transmission line has four primary descriptive constants:

1. The loop resistance per unit length,  $R$ .
2. The loop inductance per unit length,  $L$ .
3. The shunt conductance per unit length,  $G$ .
4. The shunt capacitance per unit length,  $C$ .

If there is a voltage  $e$  between conductors and it is changing at a rate  $\frac{\partial e}{\partial t}$  there will be a shunt current  $di_s$  in a length  $dx$  given by  $di_s = (Ge + C \frac{\partial e}{\partial t}) dx$ .

This current is robbed from the current entering the element  $dx$ . Hence for the current,  $i$ , in the line we have

$$\frac{\partial i}{\partial x} = - \frac{\partial i_s}{\partial x} = - (Ge + C \frac{\partial e}{\partial t}) \quad (1)$$

Similarly, the current  $i$  in the line, changing at a rate  $\frac{\partial i}{\partial t}$  causes a series voltage  $de_s$  in the length  $dx$  given by

$$de_s = (Ri + L \frac{\partial i}{\partial t}) dx.$$

The voltage at the output of  $dx$  is the input voltage to  $dx$  less this series voltage. Thus for the voltage,  $e$ , between conductors we have

$$\frac{\partial e}{\partial x} = - \frac{\partial e_s}{\partial x} = - (Ri + L \frac{\partial i}{\partial t}) \quad (2)$$

By differentiating (1) and (2) and substituting we find:

$$\frac{\partial^2 e}{\partial x^2} = LC \frac{\partial^2 e}{\partial t^2} + (RC + LG) \frac{\partial e}{\partial t} + RGe \quad (3)$$

$$\frac{\partial^2 i}{\partial x^2} = LC \frac{\partial^2 i}{\partial t^2} + (RC + LG) \frac{\partial i}{\partial t} + RGi \quad (4)$$

Equations (3) and (4) are one dimensional wave equations the direct general solution of which is difficult. However, two cases admit simple solutions:

- a) The "distortionless" case, where  $\frac{R}{L} = \frac{G}{C}$
- b) The "harmonic" case, where the excitation is sinusoidal.

00482-3



The harmonic solution then permits complete specific solutions since the spectrum of the wave can be found at any point on the line if the input spectrum is known, and the spectrum defines the time function. However, let us first consider the "distortionless" case (a).

- a) (3) and (4) are of the same form, so let's just talk about (3). The general solution of (3) under the condition  $\frac{R}{L} = \frac{G}{C}$  is:

$$e = A e^{-\alpha x} f(x-vt) + B e^{\alpha x} f(x+vt) \quad (5)$$

where  $\alpha = \sqrt{RG}$ ,  $v = \frac{1}{\sqrt{LC}}$ , and A and B are arbitrary. This solution can be verified by substitution.

What does (5) say? The first term represents a wave traveling to the right (x increasing) at a velocity  $v$  and dying out at a rate determined by  $\alpha$ , but without changes in shape. Similarly, the second term represents a wave traveling to the left (x decreasing) at a velocity  $v$ , and also dying out at a rate determined by  $\alpha$ , and also without change of shape. Hence the name "distortionless" for this case. Since the wave shape doesn't change, the spectrum amplitude merely decreases with distance equally for all frequencies; i. e., the line attenuation is independent of frequency, the phase shift linear.

Associated with each of these voltage waves is a current wave of the same shape, i. e.:

$$i = C e^{-\alpha x} f(x-vt) + D e^{\alpha x} f(x+vt). \quad (6)$$

Substitution in (1) and (2) will reveal that

$$\frac{A}{C} = -\frac{B}{D} = \sqrt{\frac{L}{C}} \left( = \sqrt{\frac{R}{G}} \right) \quad (7)$$

Thus, for the distortionless line the ratio of instantaneous voltage to instantaneous current for any wave is a resistance  $Z_0 = \sqrt{\frac{L}{C}}$ .

- b) Things aren't too different in the harmonic case.

$$\begin{array}{l} \text{We let} \\ e = E e^{j\omega t} \\ i = I e^{j\omega t} \end{array} \quad \text{so that} \quad \begin{array}{l} \frac{de}{dt} = (j\omega)e \\ \frac{di}{dt} = (j\omega)i \end{array}$$

And get

$$\frac{dE}{dx} = (R + j\omega L) I \quad (8)$$

$$\frac{dI}{dx} = (G + j\omega C) E \quad (9)$$

$$\frac{d^2E}{dx^2} = [RG + j\omega(RC + LG) - \omega^2LC] E \quad (10)$$

$$\frac{d^2I}{dx^2} = [RG + j\omega(RC + LG) - \omega^2LC] I \quad (11)$$

We then find as the solutions:

$$E = A e^{-\gamma x} + B e^{\gamma x} \quad (12)$$

$$I = C e^{-\gamma x} + D e^{\gamma x} \quad (13)$$

Where

$$\begin{aligned} \gamma^2 &= [RG + j\omega(RC + LG) - \omega^2LC] \\ &= (R + j\omega L)(G + j\omega C). \end{aligned}$$

That is

$$\begin{aligned} \gamma &= \sqrt{(R + j\omega L)(G + j\omega C)} \\ &= \alpha + j\beta \end{aligned} \quad (14)$$

$\gamma$  is called the propagation constant. It tells what happens to the amplitude and phase of a sinusoid as it propagates down the line. It consists of two parts:  $\alpha$ , the attenuation constant (nepers/unit length)

$\beta$ , the phase constant (radians/unit length).

Thus:

$$e^{-\gamma x} = e^{-\alpha x - j\beta x} = e^{-\alpha x} \times e^{-j\beta x}$$

$\uparrow$                        $\uparrow$   
 Attenuation          Phase shift  
 with distance        with distance.

In general,  $\alpha$  and  $\beta$  are very complicated expressions of  $R, L, C, G$ ; but for the case  $\frac{R}{L} = \frac{G}{C}$ , we have

$$\alpha = \sqrt{RG}, \quad \beta = \omega \sqrt{LC};$$

while for the "low loss" case:  $R \ll \omega L, G \ll \omega C$ , we have

$$\left. \begin{aligned} \beta &\approx \omega \sqrt{LC} \\ \alpha &\approx \frac{1}{2} \left[ R \sqrt{\frac{C}{L}} + G \sqrt{\frac{L}{C}} \right] = \frac{1}{2} \left( \frac{R}{Z_0} + G Z_0 \right). \end{aligned} \right\} \quad (15)$$

Substitution of (12) and (13) in (8) and (9) shows that

$$\frac{A}{C} = -\frac{B}{D} = \sqrt{\frac{R + j\omega L}{G + j\omega C}} = Z_c \quad (16)$$

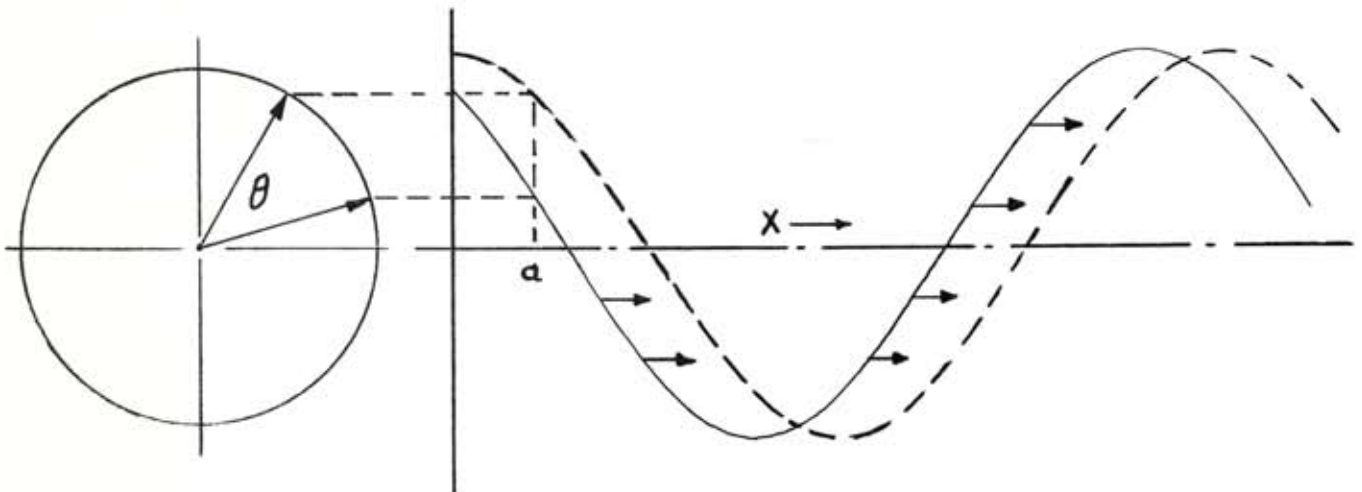
$Z_c$  is the characteristic impedance of the line. For the distortionless case  $\frac{R}{L} = \frac{G}{C}$ , we have

$$Z_c = \sqrt{\frac{L}{C}} = \sqrt{\frac{R}{G}} = Z_o$$

For the "low loss" case ( $R \ll \omega L$ ,  $G \ll \omega C$ ), we have

$$Z_c \approx \sqrt{\frac{L}{C}} \left[ 1 + j \frac{1}{2} \left( \frac{R}{\omega L} - \frac{G}{\omega C} \right) \right] \approx \sqrt{\frac{L}{C}} = Z_o \quad (17)$$

If the transmission line extends from  $x=0$  to  $x=\infty$  and the excitation is by a generator at  $x=0$ , the solution will consist of only the first term in (5) and (6) or in (12) and (13). With no loss the voltage conditions in the harmonic case are as shown below.



The solid line shows the wave now ( $t = 0$ ).

The dotted line shows the wave later ( $t = t_0$ ).

The voltage at  $x = 0$  is the generator voltage.

The voltage now (solid) at  $x = a$  is the generator voltage at the earlier time  $t = -t_0$ .

The voltage later (dotted) at  $x = a$  is the generator voltage now. As we move from  $x = 0$  to  $x = a$  the voltage we see is exactly as if we had stayed at  $x = 0$  and the generator had dropped back in phase by an angle  $-\theta$ . If we move a distance  $\lambda$ ,  $-\theta = 2\pi$ . Hence

$$-\theta = \frac{2\pi}{\lambda} x = \frac{2\pi f}{v} x = \frac{\omega}{v} x.$$

But  $v = \frac{1}{\sqrt{LC}}$ , so  $-\theta = \omega \sqrt{LC} x = \beta x$ .

If we look at any point on the infinite lossless line we will see the generator voltage delayed by an angle  $-\theta = \beta x$ . That is

$$E = E(0) e^{j\theta} = E(0) e^{-j\beta x}.$$

When the line is lossy a similar picture is obtained. The difference is that as we advance down the line the voltage is the generator voltage delayed by angle  $-\theta$ , and decreased in amplitude by a factor  $e^{-\alpha x}$ . That is

$$E(x) = E(0) e^{-\alpha x} e^{-j\beta x} = E(0) e^{-\alpha x}.$$

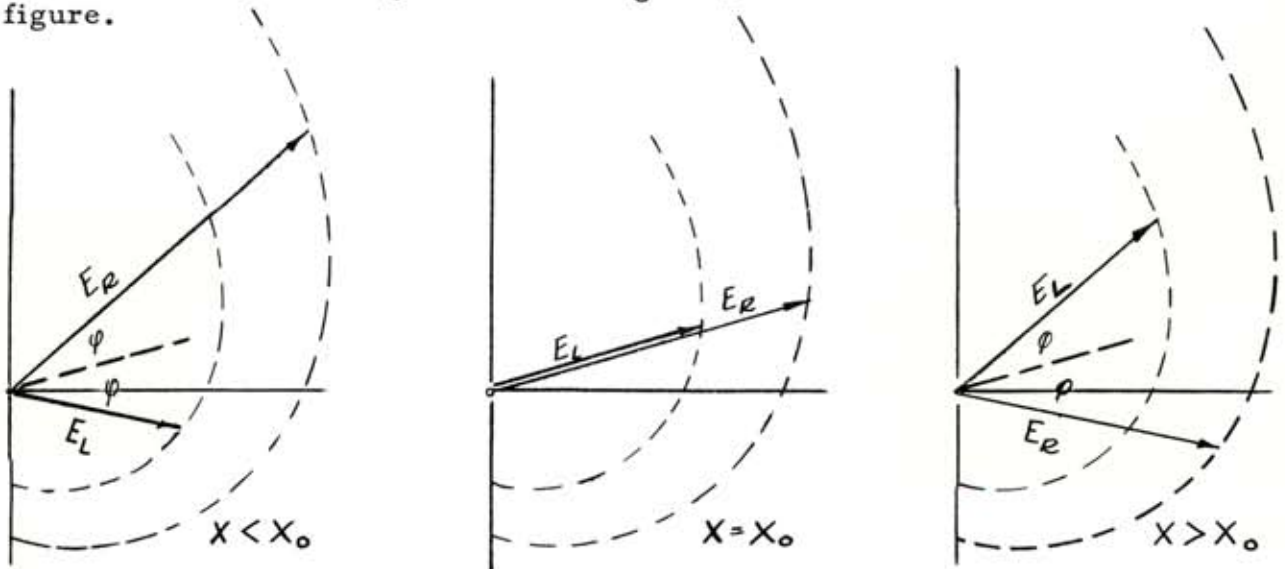
As a result we can represent the voltage (or current) for a wave traveling to the right as a vector which rotates clockwise uniformly and decreases exponentially in length with increasing  $x$ . The locus of the tip of this vector is a logarithmic spiral

$$E = E(0) e^{\left(\frac{\alpha}{\beta}\right)\theta}$$

where  $\theta$  is measured counterclockwise. The ratio  $\frac{\alpha}{\beta} \approx \frac{1}{\omega} \sqrt{\frac{RG}{LC}}$  is a measure of the lossiness of the line. For  $\frac{\alpha}{\beta} \ll 1$ . The locus is nearly circular and the loss per wavelength is small.

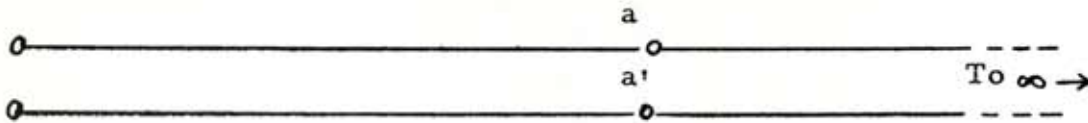
Similarly a wave traveling to the left can be represented as a vector which rotates clockwise and decreases exponentially with decreasing  $x$ .

Thus consider two voltages which happen to be in phase at  $x = x_0$ , as shown in the center figure below. If one voltage  $E_R$  is from a wave propagating to the right, the other  $E_L$  from a wave propagating to the left, then at  $x < x_0$  the picture will be as shown in the left figure. For  $x > x_0$  the picture will be as shown in the right figure.



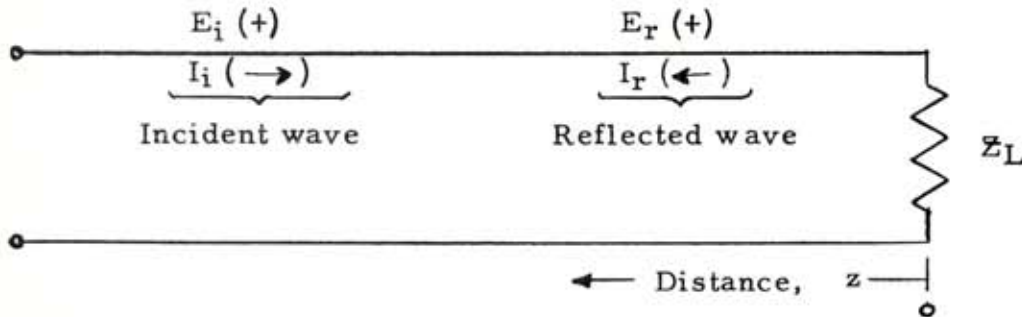
Termination, Reflection, Standing Waves

Consider any two points a-a' on the conductors of an infinite line.



To a wave incident on these points from the left, the line to the right merely looks like an impedance  $Z_0$  connecting a and a'. If we chop the line off at a-a' and connect an impedance  $Z_0$  across a-a' then so far as the line to the left is concerned,  $Z_0$  just looks like more line. Waves coming from the left will be totally absorbed by the connected impedance. We say such a line is "terminated in a matching impedance", or "matched", or simply "terminated". Regardless of length, such a line looks infinite to the generator which sees the impedance  $Z_0$ .

If we now terminate the line in an impedance  $Z_L$ , different from  $Z_0$ , a reflected wave is produced. To see how this happens, first consider the relative polarities of the incident and reflected voltages and currents. If the voltage on a conductor is positive and the current in it at the same instant is to the right, the wave is traveling to the right. If either E or I is of opposite sign, the wave is to the left. Hence the following polarities and senses are consistent for our case:



For convenience, let us measure distance from the load. Then at the load we have

$$E_L = E(0) = E_i(0) + E_r(0)$$

$$I_L = I(0) = I_i(0) - I_r(0)$$

But  $Z_L = \frac{E_L}{I_L}$  while  $\frac{E_i}{I_i} = \frac{E_r}{I_r} = Z_0$ . Hence

$$Z_L = \frac{E_i(0) + E_r(0)}{I_i(0) - I_r(0)} = Z_0 \frac{1 + \frac{E_r(0)}{E_i(0)}}{1 - \frac{I_r(0)}{I_i(0)}}$$

$$\frac{Z_L}{Z_0} = \frac{1 + \frac{E_r(0)}{E_i(0)}}{1 - \frac{I_r(0)}{I_i(0)}} \quad (18)$$

If we now let  $\rho = \frac{E_r(0)}{E_i(0)} = \frac{I_r(0)}{I_i(0)}$  we have

$$\frac{Z_L}{Z_0} = \frac{1 + \rho}{1 - \rho} \quad (19)$$

Or, turning things around

$$\rho = \frac{\frac{Z_L}{Z_0} - 1}{\frac{Z_L}{Z_0} + 1} = \frac{Z_L - Z_0}{Z_L + Z_0} \quad (20)$$

$\rho$  is called the reflection coefficient. It is the (complex) ratio of the amplitude of the reflected wave to the amplitude of the incident wave. We shall represent its magnitude by  $r$ . This is  $\rho = r e^{j\phi}$ .

The voltage at the load is

$$E_L = (1 + \rho) E_i(0) = \frac{2Z_L}{Z_L + Z_0} E_i(0)$$

The current at the load is

$$I_L = (1 - \rho) I_i(0) = \frac{2Z_0}{Z_L + Z_0} I_i(0) = \frac{2E_i(0)}{Z_L + Z_0}$$

The ratio of reflected power to incident power is given by

$$\frac{P_r}{P_i} = |\rho|^2 = r^2$$

The return loss is this ratio expressed in db. Thus

$$\begin{aligned} \text{Return Loss} &= -10 \log \frac{P_r}{P_i} \\ &= -20 \log r. \end{aligned}$$

The remainder of the power is absorbed by the load so we have

$$\frac{P_L}{P_i} = 1 - r^2$$

The reflection loss is the ratio expressed in db. Thus

$$\text{Reflection Loss} = 10 \log (1-r^2) \approx 4.343r^2 \text{ for } r \ll 1.$$

If there is reflection at the receiving end of the line, the reflected wave amplitude (current or voltage) will add vectorially to the incident wave amplitude. If there is no loss, the incident and reflected vectors merely rotate in opposite directions as we move along the line. At a point where  $E_i$  and  $E_r$  are in phase the total voltage will have the magnitude  $(1+r)E_i$ . As we move toward the generator a distance  $\Delta z$  from this point  $E_i$  will advance in phase an amount  $\beta\Delta z$  while  $E_r$  will retard the same amount. The total angle between them is thus  $2\beta\Delta z$ . When

$$2\beta\Delta z = \pi$$

$$\Delta z = \frac{\pi}{2\beta} = \frac{\pi V}{2\omega} = \frac{V}{4f} = \frac{\lambda}{4}$$

The two vectors will be opposed and the total voltage will have the magnitude  $(1-r)E_i$ . The action repeats cyclically, maxima and minima occurring alternately every quarter wavelength. The ratio of maximum to minimum is called the standing wave ratio. Evidently:

$$\text{SWR} = \frac{1+r}{1-r} \quad (21)$$

By comparing (19) and (21) we see that a resistance termination produces a standing wave ratio which is its normalized value or the reciprocal. Thus a  $50^\omega$  line terminated in a resistance of  $100^\omega$  (or  $25^\omega$ ) will have a 2 to 1 SWR.

Equation (21) may be inverted to give

$$r = \frac{\text{SWR} - 1}{\text{SWR} + 1} \quad (22)$$

Standing wave measurements thus indicate (1) the frequency and (2) the degree of match at the load.

### Input Impedance of Mis-terminated Lines

The impedance looking into a line of length  $l$  terminated in  $Z_L$  may be written merely by adapting equation (18) to the point  $z = l$ , rather than  $z = 0$ .

Thus

$$\frac{Z}{Z_0} = \frac{1 + \frac{E_r(l)}{E_i(l)}}{1 - \frac{I_r(l)}{I_i(l)}}$$

Now

$$\frac{E_r(l)}{E_i(l)} = \frac{I_r(l)}{I_i(l)} = \frac{E_r(0)}{E_i(0)} e^{-2\gamma l} = \rho e^{-2\gamma l}$$

So

$$\frac{Z}{Z_0} = \frac{1 + \rho e^{-2\gamma l}}{1 - \rho e^{-2\gamma l}} \quad (23)$$

Now substitute  $\rho e^{j\phi}$  for  $\rho$  and let  $\theta = \phi - 2\beta l$  and we find

$$\frac{Z}{Z_0} = \frac{1 + r e^{-2\alpha l} e^{j\theta}}{1 - r e^{-2\alpha l} e^{j\theta}} \quad (24)$$

For lossless lines  $\alpha = 0$  and (24) becomes

$$\frac{Z}{Z_0} = \frac{R}{Z_0} + j \frac{X}{Z_0} = \frac{1 + r e^{j\theta}}{1 - r e^{j\theta}} \quad (25)$$

Equation (25) is the equation of the Smith Chart. The equation is of the form

$$w = \frac{1 + z}{1 - z}$$

where  $w = u + jv$ , and  $z = x + jy$  are complex numbers. Such an equation is known as a bilinear transformation and is characterized by the fact that lines of constant  $u$  or constant  $v$  plot as circles in the  $z$ -plane. Since in our case  $r = |z| \leq 1$ , the entire plot lies within the unit circle  $r = 1$ .

### The Smith Chart

We see from equation (25) that the Smith Chart is essentially a plot of normalized resistance and reactance as a function of magnitude and phase of reflection coefficient. In fact:

1. Distance from the center of the chart is proportional to magnitude of reflection coefficient,  $r$ .

2. Angles about the center of the chart (read on the peripheral angle scale) are the angle of the reflection coefficient  $\phi$ , if the plane is that of the load ( $z = 0$ ); or the effective angle,  $\theta$ , if the plane is  $z = l$ .
3. The lines of constant normalized resistance  $\left(\frac{R}{Z_0}\right)$  and reactance  $\left(\frac{X}{Z_0}\right)$  form a set of curvilinear coordinates from which the impedance corresponding to any magnitude and phase of reflection coefficient may be read; or vice versa.

Now the convenient thing about the Smith Chart is this: In a lossless line, as we see from eq. (25), the input impedance change with line length is equivalent to a change in the phase of the reflection coefficient only. Hence as we change line length the input impedance will describe a circular path about the center of the Smith Chart. Since

$$\Delta\theta = 2\beta\Delta l = \frac{2\omega}{v} \Delta l = 4\pi \frac{\Delta l}{\lambda}$$

changing  $l$  by  $\frac{\lambda}{2}$  takes us completely around the circle. For convenience, a second angle scale calibrated in terms of fractions of a wavelength is provided around the periphery. With a Smith Chart you don't need tables of hyperbolic functions to compute transmission line problems; all you need is a ruler and compass. (In fact, you usually don't need the compass.) This sounds easy enough, let's try an example.

Example 1: A  $50\omega$  line is terminated in a resistance of  $30\omega$  in series with a capacitive reactance of  $40\omega$ .

- a) What is the reflection coefficient?
- b) What is the SWR?
- c) What is the input impedance if  $l = 0.1\lambda$ ?
- d) What lengths of line make the input impedance resistive and what is the resistance?

Solution:  $\frac{30 - j40}{50} = 0.6 - j0.8$  so we enter the chart at  $\frac{R}{Z_0} = 0.6$ ,

$\frac{X}{Z_0} = 0.8$ , marking point A.

- a) The distance of point to the center is 0.5. Radial line through A to angle scale shows  $\phi = -90^\circ$ . Thus  $\rho = 0.5 \angle -90^\circ$
- b) Draw the circle of constant  $r = 0.5$  through point A. This circle intersects the  $\frac{X}{Z_0} = 0$  line on the  $\frac{R}{Z_0} > 1$  side at  $\frac{R}{Z_0} = 3$  (Point B). This is the SWR. (This is the  $\frac{R}{Z_0}$  which would produce the same  $r$  as the actual load, and for  $\frac{R}{Z_0} > 1$ ,  $\frac{R}{Z_0} = \text{SWR}$ ).

- c) Radius through A intersects wavelength scale ("toward generator" scale) at  $0.375\lambda$ . (This is just an arbitrary starting point. On fancy Smith charts, wavelength scale can be rotated to put index here.) Proceed  $0.1\lambda$  toward generator - you're going away from load, aren't you? -- to  $0.475$ . Draw radius. Intersects circle (Point C) at  $0.336 - j 0.144$  or  $16.8 - j 7.2$  ohms.
- d) Impedance will be real at Points D and B. Takes  $0.5\lambda - 0.375\lambda = \frac{\lambda}{8}$  to get to D from A. Another  $\frac{\lambda}{4}$  to get to B. Resistance at D is  $50 \times 0.333 \dots = 16.67$  ohms. Resistance at B is  $50 \times 3 = 150\omega$ .

Referring to equation (25) we see that changing  $\theta$  by  $\pi$  inverts the expression. Thus points diametrically opposite each other on the Smith Chart are inverses of each other with respect to  $Z_0$ , i.e.  $\frac{Z_1}{Z_0} = \frac{Z_0}{Z_2}$  or  $Z_1 Z_2 = Z_0^2$ . This illustrates the impedance inverting property of a quarter wave (or  $\frac{(2n-1)\lambda}{4}$ ) line, since it takes a quarter wavelength to go halfway around the chart. Further, since

$$\frac{Z_0}{Z} = \frac{Y}{Y_0}$$

the point diametrically opposite a given normalized impedance point is the normalized admittance representation. Thus the Smith Chart can be used equally well on an impedance or admittance basis. In the latter case one merely uses the  $\frac{R}{Z_0}$  scale as  $\frac{G}{Y_0}$  and the  $\frac{X}{Z_0}$  scale as  $\frac{B}{Y_0}$ .

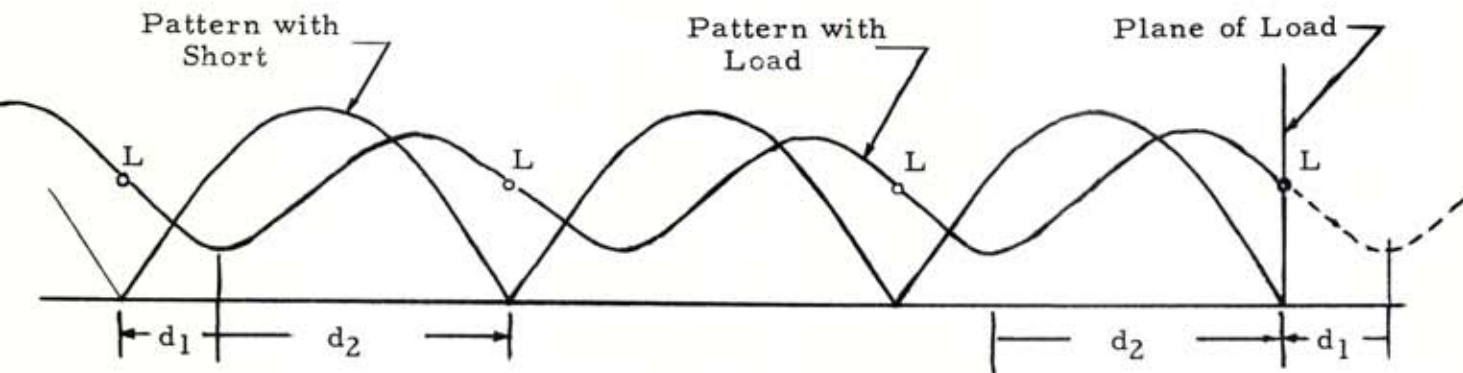
The voltage maxima along a line occur at the point where  $\frac{Z}{Z_0}$  is greatest, i.e., where  $\rho$  is real and positive; the minima where  $\frac{Z}{Z_0}$  is least, i.e., where  $\rho$  is real and negative. Thus the maxima are where the r-circle intersects the  $\frac{X}{Z_0} = 0$  line where  $\frac{R}{Z_0} > 1$  and the minima at the intersection where  $\frac{R}{Z_0} < 1$ .

A standing wave measurement suffices to determine the magnitude of the reflection coefficient,  $r$ , of an unknown load. To complete the picture the phase (referred to some reference plane) must also be found. This can be done by measuring the position of the minima of the SW pattern with the unknown, relative to their positions with a load having known reflection phase, and is usually carried out as follows:

1. Locate a voltage minimum with the actual load. (Any minimum near the middle of the slotted section will do.)

2. Replace the load with short circuit.
3. Locate a nearby new null and express in wavelengths the distance you moved (toward generator or toward load) from the old minimum. Draw this radial line on the Smith Chart, using the wavelength scales (with their zeros opposite  $\frac{Z}{Z_0} = 0$ ).
4. Draw the circle representing the measured SWR and read the impedance where it intersects the radial line.

The impedance so obtained is referred to the plane of the short. The reason the method works may be seen from the drawing below.



Input Impedance = Load Impedance at Points Marked "L".

Since the input impedance of the line is equal to the load impedance for a line any number of half wavelengths long, and since these half wavelength multiples occur at the nulls with a short, the input impedance will equal the load impedance either a distance  $d_1$  toward the generator or a distance  $d_2$  toward the load from the observed minimum. Now the input impedance at the observed minimum occurs on the  $\frac{X}{Z_0} = 0$  line for  $\frac{R}{Z_0} < 1$  on the chart. This happens to be the zero axis for the wavelength scale (as printed) so all we do is go toward the generator a distance  $d_1$  on our r-circle or toward the load a distance  $d_2$ . Since  $d_1 + d_2 = \frac{\lambda}{2}$  we will end up at the same point on the chart.

Additional radial scales are often provided on the Smith Chart. Some of these and their uses are listed below:

1. Voltage or Current Limits

(Max. and Min.) These are scales of  $\sqrt{\text{SWR}}$  and  $\frac{1}{\sqrt{\text{SWR}}}$  respectively.

They are used to find the maximum and minimum voltages or currents on a line when the line impedance and load power are known, using the relations:

$$E_{\max} = \sqrt{P Z_0 (\text{SWR})} \quad I_{\max} = \sqrt{P(\text{SWR}) / Z_0}$$

$$E_{\min} = \sqrt{P Z_0 / (\text{SWR})} \quad I_{\min} = \sqrt{P / Z_0 (\text{SWR})}$$

2. Voltage or Current Ratios -

(Max. and Min. and db) These are scales of SWR and  $20 \log \text{SWR}$ .

3. Reflection Loss (db) -

This is a scale of  $-10 \log (1 - r^2)$ , i.e. the load mismatch loss in db.

4. S. W. Loss Coefficient -

This is a scale of  $\frac{1 + r^2}{1 - r^2}$  which is the factor by which the actual power dissipation in the line is increased by the SWR.

5. "1 db Steps" (or 1/2 Return Loss) -

This is a scale which can be used to compute or to take account of line loss as explained below. If each step is taken as 2 db, starting with the outside mark as 0 db, the scale becomes a scale of return loss ( $-10 \log r^2$ ).

Use of Smith Chart with Lossy Lines

So far our discussion of the Smith Chart has assumed a lossless line. The locus of input impedance as line length varies is then a circle, as we have seen.

Referring to equation (24) we see that if  $\alpha \neq 0$  then the effective reflection coefficient not only changes in angle ( $\theta$ ) but also decreases exponentially in magnitude as we progress toward the generator. The Smith Chart can still be used to convert between input and load impedances, but the loci along which impedances move with  $l$  are now logarithmic spirals, not circles. However, if the attenuation per wavelength is known the process is not difficult.

The losses are most simply taken into account with the aid of an additional radial scale marked off in 1 db steps, the use of which is best illustrated by example. Suppose the line in Example 1 had a loss of 5 db per wavelength. Then the answer to part (c) would be obtained as follows.

1. We would first pretend the line had no loss and obtain point C, as before.
2. Since we have moved away from the load, the effect of line loss will be to make the input impedance nearer the characteristic impedance than would be the case without loss. The total intervening attenuation has been 0.1 wavelength x 5 db per wavelength or 0.5 db. Accordingly, we move inward radially from point C by 0.5 db on the 1 db steps scale to obtain point E. This point is the normalized input impedance with the lossy line.

Since the 1 db steps are farthest apart for  $r \approx 1$ , we see that corrections for loss will have the greatest effect on impedances when the SWR is high.

The attenuation of a lossy line can be determined by a measurement of SWR of shorted length of line. Since the reflection coefficient of the load is unity, the reflection coefficient at  $z = l$  will be  $r = e^{-2\alpha l}$ . Hence we have

$$\begin{aligned} \alpha l &= -\frac{1}{2} \ln r = \frac{1}{2} \ln \left( \frac{\text{SWR} + 1}{\text{SWR} - 1} \right) \quad (\text{nepers}) \\ &= -4.343 \log r = 4.343 \log \left( \frac{\text{SWR} + 1}{\text{SWR} - 1} \right) \quad (\text{db}) \end{aligned}$$

This quantity (in db) can be read directly from the "1 db steps" radial scale as the number of db from  $r = 1$  ( $\text{SWR} = \infty$ ) to the point opposite the measured  $r$  (or SWR).

The load need not be a short, though this is best. With less than unity reflection at the load one takes the difference on the db steps scale between the point for  $r$  (or SWR) as measured at the load and the point for  $r$  (or SWR) as measured through the line.

The measurement of attenuation using the "db steps" scale is not very accurate for very low or very high attenuation. However, with a slotted line, the expression

$$\alpha l = 4.343 \log \left( \frac{\text{SWR} + 1}{\text{SWR} - 1} \right) \quad (\text{db})$$

is quite accurate for low attenuations. For high attenuations a transmission measurement is preferable.

**ELECTRONIC INSTRUMENTATION SALES AND SERVICE**

**UNITED STATES**

**ALABAMA**

P.O. Box 4207  
2003 Byrd Spring Road S.W.  
Huntsville 35802  
Tel: (205) 881-4591  
TWX: 810-726-2204

**ARIZONA**

3009 North Scottsdale Road  
Scottsdale 85251  
Tel: (602) 945-7601  
TWX: 910-950-1282

232 South Tucson Boulevard  
Tucson 85716  
Tel: (602) 623-2564  
TWX: 910-952-1162

**CALIFORNIA**

3939 Lankershim Boulevard  
North Hollywood 91604  
Tel: (213) 877-1282  
TWX: 910-499-2170

1101 Embarcadero Road  
Palo Alto 94303  
Tel: (415) 327-6500  
TWX: 910-373-1280

2591 Carlsbad Avenue  
Sacramento 95821  
Tel: (916) 482-1463  
TWX: 910-367-2092

1055 Shafter Street  
San Diego 92106  
Tel: (714) 223-8103  
TWX: 910-335-2000

**COLORADO**

7965 East Prentice  
Englewood 80110  
Tel: (303) 771-3455  
TWX: 910-935-0705

**CONNECTICUT**

508 Tolland Street  
East Hartford 06108  
Tel: (203) 289-9394  
TWX: 710-425-3416

111 East Avenue  
Norwalk 06851  
Tel: (203) 853-1251  
TWX: 710-468-3750

**DELAWARE**

3941 Kennett Pike  
Wilmington 19807  
Tel: (302) 655-6161  
TWX: 510-666-2214

**FLORIDA**

Suite 106  
9999 N.E. 2nd Avenue  
Miami Shores 33138  
Tel: (305) 758-3626  
TWX: 810-848-7262

P.O. Box 20007  
Herndon Station 32814  
621 Commonwealth Avenue  
Orlando  
Tel: (305) 841-3970  
TWX: 810-850-0113

P.O. Box 8128  
Madeira Beach 33708  
410 150th Avenue  
St. Petersburg  
Tel: (813) 391-0211  
TWX: 810-863-0366

**GEORGIA**

P.O. Box 28224  
2340 Interstate Parkway  
Atlanta 30328  
Tel: (404) 436-6181  
TWX: 810-766-4890

**ILLINOIS**

5500 Howard Street  
Skokie 60076  
Tel: (312) 677-0400  
TWX: 910-223-3613

**INDIANA**  
4002 Meadows Drive  
Indianapolis 46205  
Tel: (317) 546-4891  
TWX: 810-341-3263

**LOUISIANA**

391 Grand Avenue  
1942 Williams Boulevard  
Kenner 70062  
Tel: (504) 721-6201  
TWX: 810-955-5524

**MARYLAND**

6707 Whitestone Road  
Baltimore 21207  
Tel: (301) 944-5400  
TWX: 710-862-0850

P.O. Box 727  
Twinbrook Station 20851  
12303 Twinbrook Parkway  
Rockville  
Tel: (301) 427-7560  
Tel: (301) 710-828-9684

**MASSACHUSETTS**

Middlesex Turnpike  
Burlington 01803  
Tel: (617) 272-9000  
TWX: 710-332-0382

**MICHIGAN**

24315 Northwestern Highway  
Southfield 48075  
Tel: (313) 353-9100  
TWX: 810-232-1532

**MINNESOTA**

2459 University Avenue  
St. Paul 55114  
Tel: (612) 645-9461  
TWX: 910-563-3734

**MISSOURI**

9208 Wyoming Place  
Kansas City 64114  
Tel: (816) 333-2445  
TWX: 910-771-2087

2812 South Brentwood Blvd.  
St. Louis 63144  
Tel: (314) 644-0220  
TWX: 910-760-1670

**NEW JERSEY**

391 Grand Avenue  
Englewood 07631  
Tel: (201) 567-3933  
TWX: 710-991-9707

**NEW MEXICO**

P.O. Box 8366  
Station C 87108  
6501 Lomas Boulevard N.E.  
Albuquerque  
Tel: (505) 255-5586  
TWX: 910-989-1665

156 Wyatt Drive  
Las Cruces 88001  
Tel: (505) 526-2485  
TWX: 910-983-0550

**NEW YORK**

1702 Central Avenue  
Albany 12205  
Tel: (518) 869-8462

1219 Campville Road  
Endicott 13760  
Tel: (607) 754-0050  
TWX: 510-252-0890

236 East 75th Street  
New York 10021  
Tel: (212) 879-2023  
TWX: 710-581-4376

82 Washington Street  
Poughkeepsie 12601  
Tel: (914) 454-7330  
TWX: 510-248-0012

39 Saginaw Drive  
Rochester 14623  
Tel: (716) 473-9500  
TWX: 510-253-5981

1025 Northern Boulevard  
Roslyn, Long Island 11576  
Tel: (516) 869-8400  
TWX: 510-223-0811

5858 East Molloy Road  
Syracuse 13211  
Tel: (315) 454-2486  
TWX: 710-541-0482

**NORTH CAROLINA**

P.O. Box 5187  
1923 North Main Street  
High Point 27262  
Tel: (919) 884-6873  
TWX: 510-926-1516

**OHIO**

5579 Pearl Road  
Cleveland 44129  
Tel: (216) 884-9209  
TWX: 810-421-8500

2460 South Dixie Drive  
Dayton 45439  
Tel: (513) 298-0351  
TWX: 810-459-1925

**OREGON**

Westhills Mall, Suite 158  
4475 S.W. Scholls Ferry Road  
Portland 97225  
Tel: (503) 292-9171  
TWX: 910-464-6103

**PENNSYLVANIA**

2500 Moss Side Boulevard  
Monroeville 15146  
Tel: (412) 271-0724  
TWX: 710-797-3650

144 Elizabeth Street  
West Conshohocken 19428  
Tel: (215) 248-1600, 828-6200  
TWX: 510-660-8715

**TEXAS**

P.O. Box 7166  
3605 Inwood Road  
Dallas 75209  
Tel: (214) 357-1881  
TWX: 910-861-4081

P.O. Box 22813  
4242 Richmond Avenue  
Houston 77027  
Tel: (713) 667-2407  
TWX: 910-881-2645

**GOVERNMENT CONTRACT OFFICE**

225 Billy Mitchell Road  
San Antonio 78226  
Tel: (512) 434-4171  
TWX: 910-871-1170

**UTAH**

2890 South Main Street  
Salt Lake City 84115  
Tel: (801) 486-8166  
TWX: 910-925-5661

**VIRGINIA**

P.O. Box 6514  
2111 Spencer Road  
Richmond 23230  
Tel: (703) 282-5451  
TWX: 910-956-0157

**WASHINGTON**

11656 N.E. Eighth Street  
Bellevue 98004  
Tel: (206) 454-3971  
TWX: 910-443-2303

FOR AREAS NOT LISTED, CONTACT: Hewlett-Packard; 1501 Page Mill Road, Palo Alto, California 94304; Tel: (415) 326-7000; TWX: 910-373-1267; Telex: 34-8461

**CANADA**

**ALBERTA**

10010 - 105th Street  
Edmonton  
Tel: (403) 424-0718  
TWX: 610-831-2431

**BRITISH COLUMBIA**

Hewlett-Packard (Canada) Ltd.  
2184 West Broadway  
Vancouver  
Tel: (604) 738-7520  
TWX: 610-922-5050

**NOVA SCOTIA**

7001 Mumford Road  
Suite 356  
Halifax  
Tel: (902) 455-0511  
TWX: 610-271-4482

**ONTARIO**

Hewlett-Packard (Canada) Ltd.  
880 Lady Ellen Place  
Ottawa 3  
Tel: (613) 722-4223  
TWX: 610-562-1952

Hewlett-Packard (Canada) Ltd.

1415 Lawrence Avenue West  
Toronto  
Tel: (416) 249-9196  
TWX: 610-492-2382

**QUEBEC**

Hewlett-Packard (Canada) Ltd.  
275 Hymus Boulevard  
Pointe Claire  
Tel: (514) 697-4232  
TWX: 610-422-3022  
Telex: 01-2819

FOR AREAS NOT LISTED, CONTACT: Hewlett-Packard Inter-Americas; 1501 Page Mill Road, Palo Alto, Calif. 94304; Tel: (415) 326-7000; TWX: 910-373-1267; Telex: 034-8461; Cable: HEWPACK Palo Alto

**CENTRAL AND SOUTH AMERICA**

**ARGENTINA**

Mauricio A. Suárez  
Telecomunicaciones  
Carlos Calvo 224  
Buenos Aires  
Tel: 30-6312, 34-9087  
Cable: TELEPILOT Buenos Aires

**CHILE**

Héctor Calcagni  
Casilla 13942  
Santiago  
Tel: 490.505, 393.119

**COLOMBIA**

Instrumentacion  
Henrik A. Langebaek & Cia. Ltda.  
Cra. 7A N° 48-51/59  
Apartado Aereo 6287  
Bogota, 1 D.E.  
Tel: 45-78-06, 45-55-46  
Cable: AARIS Bogota

**COSTA RICA**

Lic. Alfredo Gallegos Guardián  
Apartado 3243  
San José  
Tel: 21-86-13  
Cable: GALGUR San José

**ECUADOR**

Laboratorios de Radio-Ingeniería  
Calle Guayaquil 1246  
Post Office Box 3199  
Quito  
Tel: 12496  
Cable: HORVATH Quito

**EL SALVADOR**

Electrónica  
27 Avenida Norte 1133  
Apartado Postal 1589  
San Salvador  
Tel: 25-74-50  
Cable: ELECTRONICA  
San Salvador

**GUATEMALA**

Olander Associates Latin America  
Apartado 1226  
7a. Calle, 0-22, Zona 1  
Guatemala City  
Tel: 22812  
Cable: OLALA Guatemala City

**MEXICO**

Hewlett-Packard Mexicana,  
S.A. de C.V.  
Eugenia 408, Dept. 1  
Mexico 12, D.F.  
Tel: 43-03-79

**NICARAGUA**

Roberto Terán G.  
Edificio Terán  
Apartado Postal 689  
Managua  
Tel: 3451, 3452  
Cable: ROTERAN Managua

**PANAMA**

Electrónica Balboa, S.A.  
P.O. Box 4929  
Ave. Manuel Espinosa No. 13-50  
Bldg. Alina  
Panama City  
Tel: 30833  
Cable: ELECTRON Panama City

**PERU**

Fernando Ezeta B.  
Av. Petit Thouars 4719  
Miraflores  
Casilla 3061  
Lima  
Tel: 50346  
Cable: FEPERU Lima

**PUERTO RICO**

San Juan Electronics, Inc.  
P.O. Box 5167  
Ponce de León 150, Stop 3  
Puerta de Tierra Santa  
San Juan 00906  
Tel: (809) 725-3342  
Cable: SATRONICS San Juan

**URUGUAY**

Pablo Ferrando  
S.A. Comercial e Industrial  
Avenida Italia 2877  
Casilla de Correo 370  
Montevideo  
Tel: 40-3102  
Cable: RADIUM Montevideo

**VENEZUELA**

Citec, C.A.  
Edif. Arisan-Of. #4  
Avda. Francisco de Miranda  
Apartado del Este 10934 Chacaito  
Caracas  
Tel: 71.88.05  
Cable: CITECAL Caracas

FOR AREAS NOT LISTED, CONTACT: Hewlett-Packard Inter-Americas; 1501 Page Mill Road, Palo Alto, Calif. 94304; Tel: (415) 326-7000; TWX: 910-373-1267; Telex: 034-8461; Cable: HEWPACK Palo Alto

**ELECTRONIC INSTRUMENTATION SALES AND SERVICE**

**EUROPE**

**AUSTRIA**  
Unilabor H.m.b.H.  
Wissenschaftliche Instrumente  
Rummelhardtgasse 6/3  
P.O. Box 33  
Vienna IX/71  
Tel: 425 181  
Cable: LABORINSTRUMENT  
Vienna

**BELGIUM**  
Hewlett-Packard Benelux S.A.  
20-24 rue de l'Hôpital  
Brussels  
Tel: 11 22 20  
Cable: PALOBEN Brussels

**DENMARK**  
Tage Olsen A/S  
Ronnegade 1  
Copenhagen 0  
Tel: 29 48 00  
Cable: TOCOPEN Copenhagen

**FINLAND**  
INTO O/Y  
Meritalinkatu 11  
P.O. Box 10153  
Helsinki 10  
Tel: 51 133  
Cable: INTO Helsinki

**FRANCE**  
Hewlett-Packard France  
2 rue Tête d'Or  
Lyon, 6 - Rhône  
Tel: 52 35 66  
Hewlett-Packard France  
150 Boulevard Massena  
Paris 13e  
Tel: 707 97 19  
Cable: HEWPACK Paris

**GERMANY**  
Hewlett-Packard Vertriebs-GmbH  
Lietzenburger Strasse 30  
1 Berlin W 30  
Tel: 24 86 36

Hewlett-Packard Vertriebs-GmbH  
Herrnberger Strasse 110  
703 Bablingen, Württemberg  
Tel: 07031-6971  
Cable: HEPAG Bablingen

Hewlett-Packard Vertriebs-GmbH  
Achenbachstrasse 15  
4 Düsseldorf 1  
Tel: 68 52 58/59

Hewlett-Packard Vertriebs-GmbH  
Kurfürstenstrasse 95  
6 Frankfurt 50  
Tel: 52 00 36  
Cable: HEWPACKSA Frankfurt

Hewlett-Packard Vertriebs-GmbH  
Beim Strohhaus 26  
2 Hamburg 1  
Tel: 24 05 51/52  
Cable: HEWPACKSA Hamburg

Hewlett-Packard Vertriebs-GmbH  
Reginfriedstrasse 13  
8 Munich 9  
Tel: 69 51 21/22  
Cable: HEWPACKSA Munich

**GREECE**  
Kostos Karayannis  
18, Ermou Street  
Athens 126  
Tel: 230 301  
Cable: RAKAR Athens

**IRELAND**  
Hewlett-Packard Ltd.  
224 Bath Road  
Slough, Bucks, England  
Tel: Slough 28406-9, 29486-9  
Cable: HEWPIE Slough

**ITALY**  
Hewlett-Packard Italiana S.p.A.  
Viale Lunigiana 46  
Milan  
Tel: 69 15 84  
Cable: HEWPAKIT Milan

Hewlett-Packard Italiana S.p.A.  
Palazzo Italia  
Piazza Marconi 25  
Rome - Eur  
Tel: 591 2544  
Cable: HEWPAKIT Rome

**NETHERLANDS**  
Hewlett-Packard Benelux, N.V.  
de Boelelaan 1043  
Amsterdam, Z.2  
Tel: 42 77 77  
Cable: PALOBEN Amsterdam

**NORWAY**  
Morgenstjerne & Co. A/S  
Ingeniofirma  
6 Wessels Gate  
Oslo  
Tel: 20 16 35  
Cable: MOROF Oslo

**PORTUGAL**  
Teleclra  
Rua Rodrigo da Fonseca 103  
P.O. Box 2531  
Lisbon 1  
Tel: 68 60 72  
Cable: TELECLRA Lisbon

**SPAIN**  
Ataio Ingenieros  
Urgel, 259  
Barcelona, 11  
Tel: 230-69-88  
Ataio Ingenieros  
Enrique Larreta 12  
Madrid, 16  
Tel: 235 43 44  
Cable: TELEATAIO Madrid

**SWEDEN**  
HP Instrument AB  
Hagakersgatan 7  
Mölnådal  
Tel: 031 - 27 68 00  
HP Instrument AB  
Centralvägen 28  
Solna  
Tel: 08 - 83 08 30  
Cable: MEASUREMENTS  
Stockholm

**SWITZERLAND**  
HEWPAK AG  
Zurcherstrasse  
8952 Schlieren  
Zurich  
Tel: (051) 98 18 21  
Cable: HEWPAKAG Zurich

**TURKEY**  
Telekom Engineering Bureau  
P.O. Box 376 - Galata  
Istanbul  
Tel: 49 40 40  
Cable: TELEMTION Istanbul

**UNITED KINGDOM**  
Hewlett-Packard Ltd.  
224 Bath Road  
Slough, Bucks  
Tel: Slough 28406-9, 29486-9  
Cable: HEWPIE Slough

**YUGOSLAVIA**  
Belram S.A.  
83 avenue des Mimosas  
Brussels 15, Belgium  
Tel: 35 29 58  
Cable: BELRAMEL Brussels

FOR AREAS NOT LISTED, CONTACT: Hewlett-Packard S.A.; 54 Route des Acacias; Geneva, Switzerland; Tel: (022) 42 81 50; Telex: 2.24.86; Cable: HEWPACKSA Geneva

**AFRICA, ASIA, AUSTRALIA**

**AUSTRALIA**  
Hewlett-Packard Australia  
Pty. Ltd.  
22-26 Weir Street  
Glen Iris, S. E. 6  
Victoria  
Tel: 20-1371 (4 lines)  
Cable: HEWPARD Melbourne  
Hewlett-Packard Australia  
Pty. Ltd.  
4 Grose Street  
Glebe, New South Wales  
Tel: 211-2235, 211-2888  
Cable: HEWPARD Sydney

**CEYLON**  
United Electricals Ltd.  
P.O. Box 681  
Yahala Building  
Staples Street  
Colombo 2  
Tel: 5496  
Cable: HOTPOINT Colombo

**ETHIOPIA**  
African Salespower & Agency  
Private Ltd., Co.  
P. O. Box 718  
Addis Ababa  
Tel: 44090  
Cable: ASACO Addisababa

**HONG KONG**  
Schmidt & Co. (Hong Kong) Ltd.  
P.O. Box 297  
1511, Prince's Building  
10, Chater Road  
Hong Kong  
Tel: 240168, 232735  
Cable: SCHMIDTCO Hong Kong

**INDIA**  
The Scientific Instrument  
Co., Ltd.  
6, Tej Bahadur Sapru Road  
Allahabad 1  
Tel: 2451  
Cable: SICO Allahabad  
The Scientific Instrument  
Co., Ltd.  
240, Dr. Dadabhai Naoroji Road  
Bombay 1  
Tel: 26-2642  
Cable: SICO Bombay  
The Scientific Instrument  
Co., Ltd.  
11, Esplanade East  
Calcutta 1  
Tel: 23-4129  
Cable: SICO Calcutta  
The Scientific Instrument Co., Ltd.  
30, Mount Road  
Madras 2  
Tel: 86339  
Cable: SICO Madras

The Scientific Instrument Co., Ltd.  
B-7, Ajmeri Gate Extn.  
New Delhi 1  
Tel: 27-1053  
Cable: SICO New Delhi

**IRAN**  
Telecom, Ltd.  
P. O. Box 1812  
Teheran  
Tel: 43850, 48111  
Cable: BASCOM Teheran

**ISRAEL**  
Electronics & Engineering  
Div. of Motorola Israel Ltd.  
16, Kremenski Street  
Tel-Aviv  
Tel: 35021/2/3  
Cable: BASTEL Tel-Aviv

**JAPAN**  
Yokogawa-Hewlett-Packard Ltd.  
Shinhankyu Building  
No. 8, Umeda  
Kita-ku, Osaka City  
Tel: 0726-23-1641  
Yokogawa-Hewlett-Packard Ltd.  
Ito Building  
No. 59, Kotori-cho  
Nakamura-ku, Nagoya City  
Tel: 551-0215

Yokogawa-Hewlett-Packard Ltd.  
Ohashi Building  
No. 59, Ichome, Yoyogi  
Shibuya-ku, Tokyo  
Tel: 370-2281  
Cable: YOKOHEWPACK Tokyo  
Telex: 232-2034

**KENYA**  
R. J. Tilbury Ltd.  
P. O. Box 2754  
Suite 517/518  
Hotel Ambassador  
Nairobi  
Tel: 25670, 26803, 68206  
Cable: ARJAYTEE Nairobi

**KOREA**  
American Trading Co., Korea, Ltd.  
Seoul P. O. Box 1103  
112-35 Sokong-Dong  
Jung-ku, Seoul  
Tel: 3.7049, 3.7613  
Cable: AMTRACO Seoul

**LEBANON**  
Constantin E. Macridis  
Clemenceau Street  
Clemenceau Center  
Beirut  
Tel: 220846  
Cable: ELECTRONUCLEAR Beirut

**MALAYSIA**  
MECOMB Malaysia Ltd.  
2 Lorong 13/6A  
Section 13  
Petaling Jaya, Selangor  
Cable: MECOMB Kuala Lumpur

**NEW ZEALAND**  
Sample Electronics (N.Z.) Ltd.  
8 Matipo Street  
Onehunga S.E. 5  
Auckland  
Tel: 667-356  
Cable: ELPMS Auckland

**PAKISTAN (EAST)**  
Mushko & Company, Ltd.  
31, Jinnah Avenue  
Dacca  
Tel: 80058  
Cable: COOPERATOR Dacca

**PAKISTAN (WEST)**  
Mushko & Company, Ltd.  
Oosman Chambers  
Victoria Road  
Karachi 3  
Tel: 51027, 52927  
Cable: COOPERATOR Karachi

**SINGAPORE**  
Mechanical and Combustion  
Engineering Company Ltd.  
9, Jalan Kilang  
Singapore, 3  
Tel: 642361-3  
Cable: MECOMB Singapore

**SOUTH AFRICA**  
F. H. Flanter & Co. (Pty.), Ltd.  
Rosella House  
Buitencingle Street  
Cape Town  
Tel: 3-3817  
Cable: AUTOPHONE Cape Town

F. H. Flanter & Co. (Pty.), Ltd.  
104 Pharmacy House  
80 Jorissen Street  
Braamfontein, Johannesburg  
Tel: 724-4172

**TAIWAN**  
Hwa Sheng Electronic Co., Ltd.  
P. O. Box 1558  
21 Nanking West Road  
Taipei  
Tel: 46076, 45936  
Cable: VICTRONIX Taipei

**THAILAND**  
The International  
Engineering Co., Ltd.  
P. O. Box 39  
614 Sukhumvit Road  
Bangkok  
Tel: 913460-1-2  
Cable: GYSOM Bangkok

**VIETNAM**  
Landis Brothers and Company,  
Inc.  
P.O. Box H-3  
216 Hien-Vuong  
Saigon  
Tel: 20.805  
Cable: LANBROCOMP Saigon

FOR AREAS NOT LISTED, CONTACT: Hewlett-Packard Export Marketing; 1501 Page Mill Road; Palo Alto, California 94304; Tel: (415) 326-7000; Telex: 034-8461; Cable: HEWPACK Palo Alto