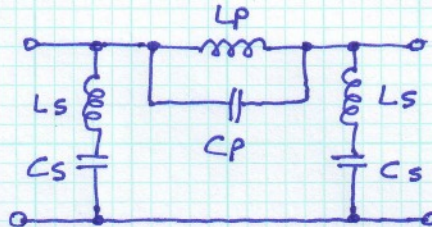
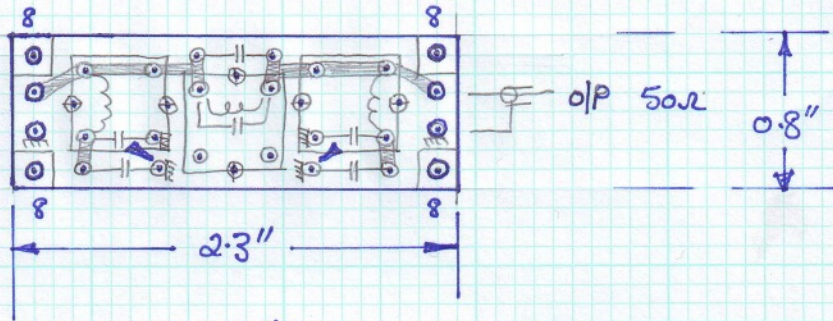


# IF REJECT FILTER

6/5/2013

①

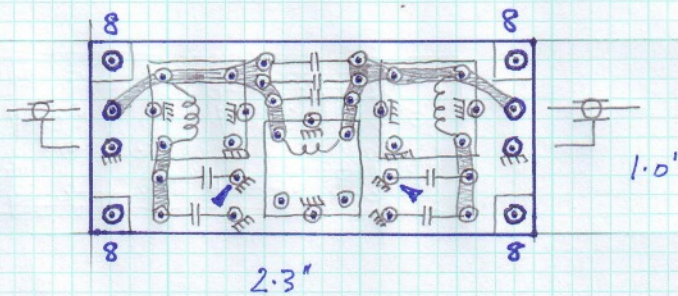
50Ω I/P  
Some CAPACITORS  
INSIDE COIL  
ASSEMBLIES.



Freq	Ls	Cs	Lp	Cp
9MHz	7.38μH	42.4p	210nH	1477p
39.7MHz	1.67μH	9.6p	47.6nH	335p

②

INCREASED  
SPACE FOR  
CAPACITORS  
ON THE PCB



Notes:

See the PCB symbol document for an explanation of all symbols on this diagram.

Board material is 1/16 inch thick double sided copper clad fibreglass.

Two different layouts have been provided to allow for different capacitor arrangements. Check the dimensions of the printed image and change the printing scale if any corrections are required.

The above view is from the solder side and all areas containing points marked as ground connections should be infilled with ground copper and connected through to the top copper groundplane.

All of the top copper is a continuous ground plane with small gaps around non-ground component leads.

Through links are marked with arrow heads to join top and bottom copper together.