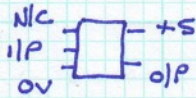


H-MODE MIXER

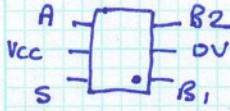
VERSION 5.

26/02/2013

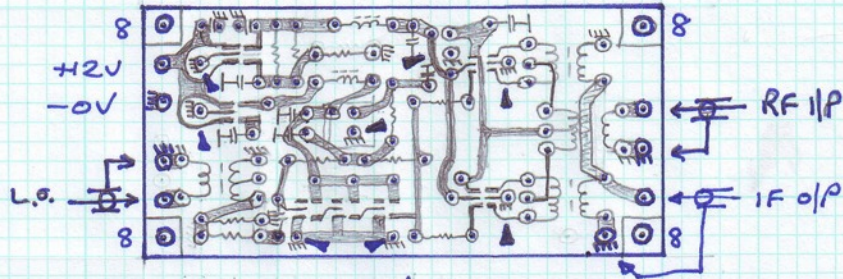
NC7SZ ϕ 4



FSA31S7



TWO REGULATORS



SQUARER
3 x NC7SZ ϕ 4

MIXER
2 x FSA31S7

REGULATORS

1 x MIC5205-SV

1 x MIC5205-VAR.

Notes:

- See the PCB symbol document for an explanation of all symbols on these diagrams.
- The above layout uses three T1-6T transformers, one T4-1 transformer and two FB43 single hole ferrite beads. The T4-1 may be replaced with a transformer wound on a two hole ferrite core.
- Board material is 1/16 inch thick double sided copper clad fibreglass.
- Board dimensions are 1.30 inches x 2.70 inches or 33mm x 69mm (rounded up). Check the dimensions of the printed image and change the printing scale if required.
- The layout above is shown viewed from the solder side and all areas containing points marked as ground connections should be in-filled with ground copper and connected through to the top copper groundplane.
- The top copper is a continuous groundplane with small gaps around non-ground component leads.
- Please note that the above drawing contains a squarer that is based on three separate ultra-high speed inverter ICs in place of the single 74AC04.