

Technician Class Question Pool

Questions and correct answers only

July 1, 2018 – June 30, 2022

By K8TB last edited 8-12-2018

SUBELEMENT T1-FCC Rules, descriptions and definitions for the amateur radio service, operator and station license responsibilities [6 Exam Questions – 6 Groups]

Which of the following is a purpose of the Amateur Radio Service as stated in the FCC rules and regulations?

Advancing skills in the technical and communication phases of the radio art

Which agency regulates and enforces the rules for the Amateur Radio Service in the United States?

The FCC

What are the FCC rules regarding the use of a phonetic alphabet for station identification in the Amateur Radio Service?

It is encouraged

How many operator/primary station license grants may be held by any one person?

One

What is proof of possession of an FCC-issued operator/primary license grant?

The control operator's operator/primary station license must appear in the FCC ULS consolidated licensee database

What is the FCC Part 97 definition of a beacon?

An amateur station transmitting communications for the purposes of observing propagation or related experimental activities

What is the FCC Part 97 definition of a space station?

An amateur station located more than 50 km above the Earth's surface

Which of the following entities recommends transmit/receive channels and other parameters for auxiliary and repeater stations?

Volunteer Frequency Coordinator recognized by local amateurs

Who selects a Frequency Coordinator?

Amateur operators in a local or regional area whose stations are eligible to be repeater or auxiliary stations

Which of the following describes the Radio Amateur Civil Emergency Service (RACES)?

-A radio service using amateur frequencies for emergency management or civil defense communications

-A radio service using amateur stations for emergency management or civil defense communications

-An emergency service using amateur operators certified by a civil defense organization as being enrolled in that organization

All of these choices are correct

When is willful interference to other amateur radio stations permitted?

At no time

What is the International Telecommunications Union (ITU)?

A United Nations agency for information and communication technology issues

Which amateur radio stations may make contact with an amateur radio station on the **International Space Station (ISS) using 2 meter and 70 cm band frequencies?**
Any amateur holding a Technician or higher-class license

Which frequency is within the 6 meter amateur band?
52.525 MHz

Which amateur band are you using when your station is transmitting on 146.52 MHz?
2 meter band

What is the limitation for emissions on the frequencies between 219 and 220 MHz?
Fixed digital message forwarding systems only

On which HF bands does a Technician class operator have phone privileges?
10 meter band only

Which of the following VHF/UHF frequency ranges are limited to CW only?
50.0 MHz to 50.1 MHz and 144.0 MHz to 144.1 MHz

Which of the following is a result of the fact that the Amateur Radio Service is secondary in all or portions of some amateur bands (such as portions of the 70 cm band)?
U.S. amateurs may find non-amateur stations in those portions, and must avoid interfering with them

Why should you not set your transmit frequency to be exactly at the edge of an amateur band or sub-band?
-To allow for calibration error in the transmitter frequency display
-So that modulation sidebands do not extend beyond the band edge
-To allow for transmitter frequency drift
All of these choices are correct

Which of the following HF bands have frequencies available to the Technician class operator for RTTY and data transmissions?
10 meter band only

What is the maximum peak envelope power output for Technician class operators using their assigned portions of the HF bands?
200 watts

Except for some specific restrictions, what is the maximum peak envelope power output for Technician class operators using frequencies above 30 MHz?
1500 watts

For which license classes are new licenses currently available from the FCC?
Technician, General, Amateur Extra

Who may select a desired call sign under the vanity call sign rules?
Any licensed amateur

What types of international communications is an FCC-licensed amateur radio station permitted to make?
Communications incidental to the purposes of the Amateur Radio Service and remarks of a personal character

When are you allowed to operate your amateur station in a foreign country?
When the foreign country authorizes it

Which of the following is a valid call sign for a Technician class amateur radio station?

K1XXX

From which of the following locations may an FCC-licensed amateur station transmit?

From any vessel or craft located in international waters and documented or registered in the United States

What may result when correspondence from the FCC is returned as undeliverable because the grantee failed to provide and maintain a correct mailing address with the FCC?

Revocation of the station license or suspension of the operator license

What is the normal term for an FCC-issued primary station/operator amateur radio license grant?

Ten years

What is the grace period following the expiration of an amateur license within which the license may be renewed?

Two years

How soon after passing the examination for your first amateur radio license may you operate a transmitter on an Amateur Radio Service frequency?

As soon as your operator/station license grant appears in the FCC's license database

If your license has expired and is still within the allowable grace period, may you continue to operate a transmitter on Amateur Radio Service frequencies?

No, transmitting is not allowed until the FCC license database shows that the license has been renewed

With which countries are FCC-licensed amateur radio stations prohibited from exchanging communications?

Any country whose administration has notified the International Telecommunications Union (ITU) that it objects to such communications

Under which of the following circumstances may an amateur radio station make one-way transmissions?

When transmitting code practice, information bulletins, or transmissions necessary to provide emergency communications

When is it permissible to transmit messages encoded to hide their meaning?

Only when transmitting control commands to space stations or radio control craft

Under what conditions is an amateur station authorized to transmit music using a phone emission?

When incidental to an authorized retransmission of manned spacecraft communications

When may amateur radio operators use their stations to notify other amateurs of the availability of equipment for sale or trade?

When the equipment is normally used in an amateur station and such activity is not conducted on a regular basis

What, if any, are the restrictions concerning transmission of language that may be considered indecent or obscene?

Any such language is prohibited

What types of amateur stations can automatically retransmit the signals of other amateur stations?

Repeater, auxiliary, or space stations

In which of the following circumstances may the control operator of an amateur station receive compensation for operating that station?

When the communication is incidental to classroom instruction at an educational institution

Under which of the following circumstances are amateur stations authorized to transmit signals related to broadcasting, program production, or news gathering, assuming no other means is available?

Only where such communications directly relate to the immediate safety of human life or protection of property

What is the meaning of the term broadcasting in the FCC rules for the Amateur Radio Service?

Transmissions intended for reception by the general public

When may an amateur station transmit without on-the-air identification?

When transmitting signals to control model craft

When is an amateur station permitted to transmit without a control operator?

Never

Who may be the control operator of a station communicating through an amateur satellite or space station?

Any amateur whose license privileges allow them to transmit on the satellite uplink frequency

Who must designate the station control operator?

The station licensee

What determines the transmitting privileges of an amateur station?

The class of operator license held by the control operator

What is an amateur station control point?

The location at which the control operator function is performed

When, under normal circumstances, may a Technician class licensee be the control operator of a station operating in an exclusive Amateur Extra class operator segment of the amateur bands?

At no time

When the control operator is not the station licensee, who is responsible for the proper operation of the station?

The control operator and the station licensee are equally responsible

Which of the following is an example of automatic control?

Repeater operation

Which of the following is true of remote control operation?

- The control operator must be at the control point
 - A control operator is required at all times
 - The control operator indirectly manipulates the controls
- All of these choices are correct**

Which of the following is an example of remote control as defined in Part 97?

Operating the station over the internet

Who does the FCC presume to be the control operator of an amateur station, unless documentation to the contrary is in the station records?

The station licensee

When must the station licensee make the station and its records available for FCC inspection?

At any time upon request by an FCC representative

When using tactical identifiers such as "Race Headquarters" during a community service net operation, how often must your station transmit the station's FCC-assigned call sign?

At the end of each communication and every ten minutes during a communication

When is an amateur station required to transmit its assigned call sign?

At least every 10 minutes during and at the end of a communication

Which of the following is an acceptable language to use for station identification when operating in a phone sub-band?

The English language

What method of call sign identification is required for a station transmitting phone signals?

Send the call sign using a CW or phone emission

Which of the following formats of a self-assigned indicator is acceptable when identifying using a phone transmission?

- KL7CC stroke W3
- KL7CC slant W3
- KL7CC slash W3

All of these choices are correct

Which of the following restrictions apply when a non-licensed person is allowed to speak to a foreign station using a station under the control of a Technician class control operator?

The foreign station must be one with which the U.S. has a third-party agreement

What is meant by the term Third Party Communications?

A message from a control operator to another amateur station control operator on behalf of another person

What type of amateur station simultaneously retransmits the signal of another amateur station on a different channel or channels?

Repeater station

Who is accountable should a repeater inadvertently retransmit communications that violate the FCC rules?

The control operator of the originating station

Which of the following is a requirement for the issuance of a club station license grant?

The club must have at least four members

SUBELEMENT T2 - Operating Procedures - [3 Exam Questions - 3 Groups]

Which of the following is a common repeater frequency offset in the 2 meter band?

Plus or minus 600 kHz

What is the national calling frequency for FM simplex operations in the 2 meter band?

146.520 MHz

What is a common repeater frequency offset in the 70 cm band?

Plus or minus 5 MHz

What is an appropriate way to call another station on a repeater if you know the other station's call sign?

Say the station's call sign, then identify with your call sign

How should you respond to a station calling CQ?

Transmit the other station's call sign followed by your call sign

Which of the following is required when making on-the-air test transmissions?

Identify the transmitting station

What is meant by "repeater offset?"

The difference between a repeater's transmit frequency and its receive frequency

What is the meaning of the procedural signal "CQ"?

Calling any station

What brief statement indicates that you are listening on a repeater and looking for a contact?

Your call sign

What is a band plan, beyond the privileges established by the FCC?

A voluntary guideline for using different modes or activities within an amateur band

What term describes an amateur station that is transmitting and receiving on the same frequency?

Simplex

Which of the following is a guideline when choosing an operating frequency for calling CQ?

-Listen first to be sure that no one else is using the frequency

-Ask if the frequency is in use

-Make sure you are in your assigned band

All of these choices are correct

What is the most common use of the "reverse split" function of a VHF/UHF transceiver?

Listen on a repeater's input frequency

What term describes the use of a sub-audible tone transmitted along with normal voice audio to open the squelch of a receiver?

CTCSS

If a station is not strong enough to keep a repeater's receiver squelch open, which of the following might allow you to receive the station's signal?

Listen on the repeater input frequency

Which of the following could be the reason you are unable to access a repeater whose output you can hear?

-Improper transceiver offset

-The repeater may require a proper CTCSS tone from your transceiver

-The repeater may require a proper DCS tone from your transceiver

All of these choices are correct

What might be the problem if a repeater user says your transmissions are breaking up on voice peaks?

You are talking too loudly

What type of tones are used to control repeaters linked by the Internet Relay Linking Project (IRLP) protocol?

DTMF

How can you join a digital repeater's "talk group"?

Program your radio with the group's ID or code

Which of the following applies when two stations transmitting on the same frequency interfere with each other?

Common courtesy should prevail, but no one has absolute right to an amateur frequency

What is a "talk group" on a DMR digital repeater?

A way for groups of users to share a channel at different times without being heard by other users on the channel

Which Q signal indicates that you are receiving interference from other stations?

QRM

Which Q signal indicates that you are changing frequency?

QSY

Why are simplex channels designated in the VHF/UHF band plans?

So that stations within mutual communications range can communicate without tying up a repeater

Where may SSB phone be used in amateur bands above 50 MHz?

In at least some portion of all these bands

Which of the following describes a linked repeater network?

A network of repeaters where signals received by one repeater are repeated by all the repeaters

When do the FCC rules NOT apply to the operation of an amateur station?

Never, FCC rules always apply

What is meant by the term "NCS" used in net operation?

Net Control Station

What should be done when using voice modes to ensure that voice messages containing unusual words are received correctly?

Spell the words using a standard phonetic alphabet

What do RACES and ARES have in common?

Both organizations may provide communications during emergencies

What does the term "traffic" refer to in net operation?

Formal messages exchanged by net stations

Which of the following is an accepted practice to get the immediate attention of a net control station when reporting an emergency?

Begin your transmission by saying "Priority" or "Emergency" followed by your call sign

Which of the following is an accepted practice for an amateur operator who has checked into a net?

Remain on frequency without transmitting until asked to do so by the net control station

Which of the following is a characteristic of good traffic handling?

Passing messages exactly as received

Are amateur station control operators ever permitted to operate outside the frequency privileges of their license class?

Yes, but only if necessary in situations involving the immediate safety of human life or protection of property

What information is contained in the preamble of a formal traffic message?

The information needed to track the message

What is meant by the term "check," in reference to a formal traffic message?

The number of words or word equivalents in the text portion of the message

What is the Amateur Radio Emergency Service (ARES)?

Licensed amateurs who have voluntarily registered their qualifications and equipment for communications duty in the public service

SUBELEMENT T3 – Radio wave characteristics: properties of radio waves; propagation modes – [3 Exam Questions - 3 Groups]

What should you do if another operator reports that your station's 2 meter signals were strong just a moment ago, but now they are weak or distorted?

Try moving a few feet or changing the direction of your antenna if possible, as reflections may be causing multi-path distortion

Why might the range of VHF and UHF signals be greater in the winter?

Less absorption by vegetation

A03 (C)

What antenna polarization is normally used for long-distance weak-signal CW and SSB contacts using the VHF and UHF bands?

Horizontal

What can happen if the antennas at opposite ends of a VHF or UHF line of sight radio link are not using the same polarization?

Signals could be significantly weaker

When using a directional antenna, how might your station be able to access a distant repeater if buildings or obstructions are blocking the direct line of sight path?

Try to find a path that reflects signals to the repeater

What term is commonly used to describe the rapid fluttering sound sometimes heard from mobile stations that are moving while transmitting?

Picket fencing

What type of wave carries radio signals between transmitting and receiving stations?

Electromagnetic

Which of the following is a likely cause of irregular fading of signals received by ionospheric reflection?

Random combining of signals arriving via different paths

Which of the following results from the fact that skip signals refracted from the ionosphere are elliptically polarized?

Either vertically or horizontally polarized antennas may be used for transmission or reception

What may occur if data signals arrive via multiple paths?

Error rates are likely to increase

Which part of the atmosphere enables the propagation of radio signals around the world?

The ionosphere

How might fog and light rain affect radio range on the 10 meter and 6 meter bands?

Fog and light rain will have little effect on these bands

What weather condition would decrease range at microwave frequencies?

Precipitation

What is the name for the distance a radio wave travels during one complete cycle?

Wavelength

What property of a radio wave is used to describe its polarization?

The orientation of the electric field

What are the two components of a radio wave?

Electric and magnetic fields

How fast does a radio wave travel through free space?

At the speed of light

How does the wavelength of a radio wave relate to its frequency?

The wavelength gets shorter as the frequency increases

What is the formula for converting frequency to approximate wavelength in meters?

Wavelength in meters equals 300 divided by frequency in megahertz

What property of radio waves is often used to identify the different frequency bands??

The approximate wavelength

What are the frequency limits of the VHF spectrum?

30 to 300 MHz

What are the frequency limits of the UHF spectrum?

300 to 3000 MHz

What frequency range is referred to as HF?

3 to 30 MHz

What is the approximate velocity of a radio wave as it travels through free space?

300,000,000 meters per second

Why are direct (not via a repeater) UHF signals rarely heard from stations outside your local coverage area?

UHF signals are usually not reflected by the ionosphere

Which of the following is an advantage of HF vs VHF and higher frequencies?

Long distance ionospheric propagation is far more common on HF

What is a characteristic of VHF signals received via auroral reflection?

The signals exhibit rapid fluctuations of strength and often sound distorted

Which of the following propagation types is most commonly associated with occasional strong over-the-horizon signals on the 10, 6, and 2 meter bands?

Sporadic E

Which of the following effects might cause radio signals to be heard despite obstructions between the transmitting and receiving stations?

Knife-edge diffraction

What mode is responsible for allowing over-the-horizon VHF and UHF communications to ranges of approximately 300 miles on a regular basis?

Tropospheric ducting

What band is best suited for communicating via meteor scatter?

6 meter band

What causes tropospheric ducting?

Temperature inversions in the atmosphere

What is generally the best time for long-distance 10 meter band propagation via the F layer?

From dawn to shortly after sunset during periods of high sunspot activity

Which of the following bands may provide long distance communications during the peak of the sunspot cycle?

6 or 10 meter bands

Why do VHF and UHF radio signals usually travel somewhat farther than the visual line of sight distance between two stations??

The Earth seems less curved to radio waves than to light

SUBELEMENT T4 - Amateur radio practices and station set-up – [2 Exam Questions - 2 Groups]

What must be considered to determine the minimum current capacity needed for a transceiver power supply?

- Efficiency of the transmitter at full power output
- Receiver and control circuit power
- Power supply regulation and heat dissipation

All of these choices are correct

How might a computer be used as part of an amateur radio station?

- For logging contacts and contact information
- For sending and/or receiving CW
- For generating and decoding digital signals

All of these choices are correct

Why should wiring between the power source and radio be heavy-gauge wire and kept as short as possible?

To avoid voltage falling below that needed for proper operation

Which computer sound card port is connected to a transceiver's headphone or speaker output for operating digital modes?

Microphone or line input

What is the proper location for an external SWR meter?

In series with the feed line, between the transmitter and antenna

Which of the following connections might be used between a voice transceiver and a computer for digital operation?

Receive audio, transmit audio, and push-to-talk (PTT)

How is a computer's sound card used when conducting digital communications?

The sound card provides audio to the radio's microphone input and converts received audio to digital form

Which of the following conductors provides the lowest impedance to RF signals?

Flat strap

Which of the following could you use to cure distorted audio caused by RF current on the shield of a microphone cable?

Ferrite choke

What is the source of a high-pitched whine that varies with engine speed in a mobile transceiver's receive audio?

The alternator

Where should the negative return connection of a mobile transceiver's power cable be connected?

At the battery or engine block ground strap

What may happen if a transmitter is operated with the microphone gain set too high?

The output signal might become distorted

Which of the following can be used to enter the operating frequency on a modern transceiver?

The keypad or VFO knob

What is the purpose of the squelch control on a transceiver?

To mute receiver output noise when no signal is being received

What is a way to enable quick access to a favorite frequency on your transceiver?

Store the frequency in a memory channel

Which of the following would reduce ignition interference to a receiver?

Turn on the noise blanker

Which of the following controls could be used if the voice pitch of a single-sideband signal seems too high or low?

The receiver RIT or clarifier

What does the term "RIT" mean?

Receiver Incremental Tuning

What is the advantage of having multiple receive bandwidth choices on a multimode transceiver?

Permits noise or interference reduction by selecting a bandwidth matching the mode

Which of the following is an appropriate receive filter bandwidth for minimizing noise and interference for SSB reception?

2400 Hz

Which of the following is an appropriate receive filter bandwidth for minimizing noise and interference for CW reception?

500 Hz

What is the function of automatic gain control, or AGC?

To keep received audio relatively constant

Which of the following could be used to remove power line noise or ignition noise?

Noise blanker

Which of the following is a use for the scanning function of an FM transceiver?

To scan through a range of frequencies to check for activity

SUBELEMENT T5 – Electrical principles: math for electronics; electronic principles; Ohm's Law – [4 Exam Questions - 4 Groups]

Electrical current is measured in which of the following units?

Amperes

Electrical power is measured in which of the following units?

Watts

What is the name for the flow of electrons in an electric circuit?

Current

What is the name for a current that flows only in one direction?

Direct current

What is the electrical term for the electromotive force (EMF) that causes electron flow?

Voltage

How much voltage does a mobile transceiver typically require?

About 12 volts

Which of the following is a good electrical conductor?

Copper

Which of the following is a good electrical insulator?

Glass

What is the name for a current that reverses direction on a regular basis?

Alternating current

Which term describes the rate at which electrical energy is used?

Power

What is the unit of electromotive force?

The volt

What describes the number of times per second that an alternating current makes a complete cycle?

Frequency

In which type of circuit is current the same through all components?

Series

In which type of circuit is voltage the same across all components?

Parallel

How many milliamperes is 1.5 amperes?

1500 milliamperes

What is another way to specify a radio signal frequency of 1,500,000 hertz?

1500 kHz

How many volts are equal to one kilovolt?

One thousand volts

How many volts are equal to one microvolt?

One one-millionth of a volt

T5B05 (B) Which of the following is equal to 500 milliwatts?

0.5 watts

If an ammeter calibrated in amperes is used to measure a 3000-milliampere current, what reading would it show?

3 amperes

If a frequency display calibrated in megahertz shows a reading of 3.525 MHz, what would it show if it were calibrated in kilohertz?

3525 kHz

How many microfarads are equal to 1,000,000 picofarads?

1 microfarad

What is the approximate amount of change, measured in decibels (dB), of a power increase from 5 watts to 10 watts?

3 dB

T5B10 (C)

What is the approximate amount of change, measured in decibels (dB), of a power decrease from 12 watts to 3 watts?

-6 dB

What is the amount of change, measured in decibels (dB), of a power increase from 20 watts to 200 watts?

10 dB

Which of the following frequencies is equal to 28,400 kHz?

28.400 MHz

If a frequency display shows a reading of 2425 MHz, what frequency is that in GHz?

2.425 GHz

What is the ability to store energy in an electric field called?

Capacitance

What is the basic unit of capacitance?

The farad

What is the ability to store energy in a magnetic field called?

Inductance

What is the basic unit of inductance?

The henry

What is the unit of frequency?

Hertz

What does the abbreviation "RF" refer to?

Radio frequency signals of all types

A radio wave is made up of what type of energy?

Electromagnetic

What is the formula used to calculate electrical power in a DC circuit?

Power (P) equals voltage (E) multiplied by current (I)

How much power is being used in a circuit when the applied voltage is 13.8 volts DC and the current is 10 amperes?

138 watts

How much power is being used in a circuit when the applied voltage is 12 volts DC and the current is 2.5 amperes?

30 watts

How many amperes are flowing in a circuit when the applied voltage is 12 volts DC and the load is 120 watts?

10 amperes

What is impedance?

A measure of the opposition to AC current flow in a circuit

What is a unit of impedance?

Ohms

What is the proper abbreviation for megahertz?

MHz

What formula is used to calculate current in a circuit?

Current (I) equals voltage (E) divided by resistance (R)

What formula is used to calculate voltage in a circuit?

Voltage (E) equals current (I) multiplied by resistance (R)

What formula is used to calculate resistance in a circuit?

Resistance (R) equals voltage (E) divided by current (I)

What is the resistance of a circuit in which a current of 3 amperes flows through a resistor connected to 90 volts?

30 ohms

What is the resistance in a circuit for which the applied voltage is 12 volts and the current flow is 1.5 amperes?

8 ohms

What is the resistance of a circuit that draws 4 amperes from a 12-volt source?

3 ohms

What is the current in a circuit with an applied voltage of 120 volts and a resistance of 80 ohms?

1.5 amperes

What is the current through a 100-ohm resistor connected across 200 volts?

2 amperes

What is the current through a 24-ohm resistor connected across 240 volts?

10 amperes

What is the voltage across a 2-ohm resistor if a current of 0.5 amperes flows through it?

1 volt

What is the voltage across a 10-ohm resistor if a current of 1 ampere flows through it?

10 volts

What is the voltage across a 10-ohm resistor if a current of 2 amperes flows through it?

20 volts

What happens to current at the junction of two components in series?

It is unchanged

What happens to current at the junction of two components in parallel?

It divides between them dependent on the value of the components

What is the voltage across each of two components in series with a voltage source?

It is determined by the type and value of the components

What is the voltage across each of two components in parallel with a voltage source?

The same voltage as the source

SUBELEMENT T6 – Electrical components; circuit diagrams; component functions – [4 Exam Questions - 4 Groups]

T6A01 (B) What electrical component opposes the flow of current in a DC circuit?

Resistor

What type of component is often used as an adjustable volume control?

Potentiometer

What electrical parameter is controlled by a potentiometer?

Resistance

What electrical component stores energy in an electric field?

Capacitor

What type of electrical component consists of two or more conductive surfaces separated by an insulator?

Capacitor

What type of electrical component stores energy in a magnetic field?

Inductor

What electrical component usually is constructed as a coil of wire?

Inductor

What electrical component is used to connect or disconnect electrical circuits?

Switch

What electrical component is used to protect other circuit components from current overloads?

Fuse

Which of the following battery types is rechargeable?

-Nickel-metal hydride

-Lithium-ion

-Lead-acid gel-cell

All of these choices are correct

Which of the following battery types is not rechargeable?

Carbon-zinc

What class of electronic components uses a voltage or current signal to control current flow?

Transistors

What electronic component allows current to flow in only one direction?

Diode

Which of these components can be used as an electronic switch or amplifier?

Transistor

Which of the following components can consist of three layers of semiconductor material?

Transistor

Which of the following electronic components can amplify signals?

Transistor

How is the cathode lead of a semiconductor diode often marked on the package?

With a stripe

What does the abbreviation LED stand for?

Light Emitting Diode

What does the abbreviation FET stand for?

Field Effect Transistor

What are the names of the two electrodes of a diode?

Anode and cathode

Which of the following could be the primary gain-producing component in an RF power amplifier?

Transistor

What is the term that describes a device's ability to amplify a signal?

Gain

What is the name of an electrical wiring diagram that uses standard component symbols?

Schematic

What is component 1 in figure T1?

Resistor

What is component 2 in figure T1?

Transistor

What is component 3 in figure T1?

Lamp

What is component 4 in figure T1?

Battery

What is the function of component 2 in Figure T1?

Control the flow of current

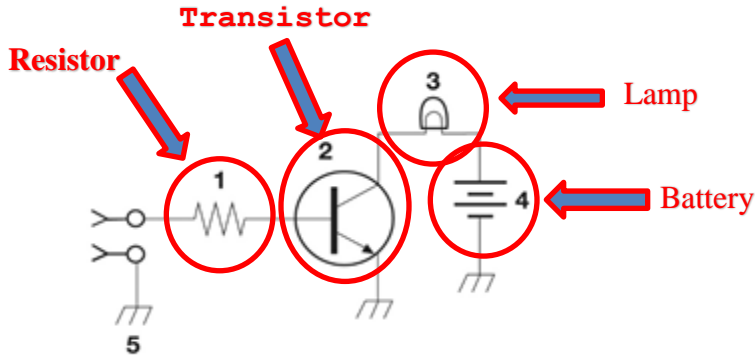


Figure T-1

What is component 6 in figure T2?

Capacitor

What is component 8 in figure T2?

Light emitting diode

What is component 9 in figure T2?

Variable resistor

What is component 4 in figure T2?

Transformer

What type of switch is represented by component 3 in figure T2?

Single-pole single-throw

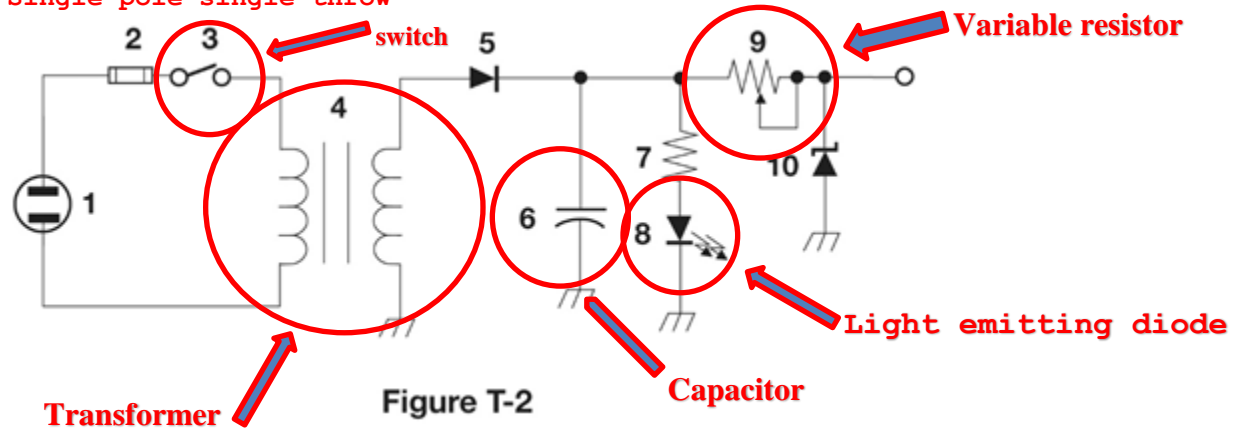


Figure T-2

What is component 3 in figure T3?

Variable inductor

What is component 4 in figure T3?

Antenna

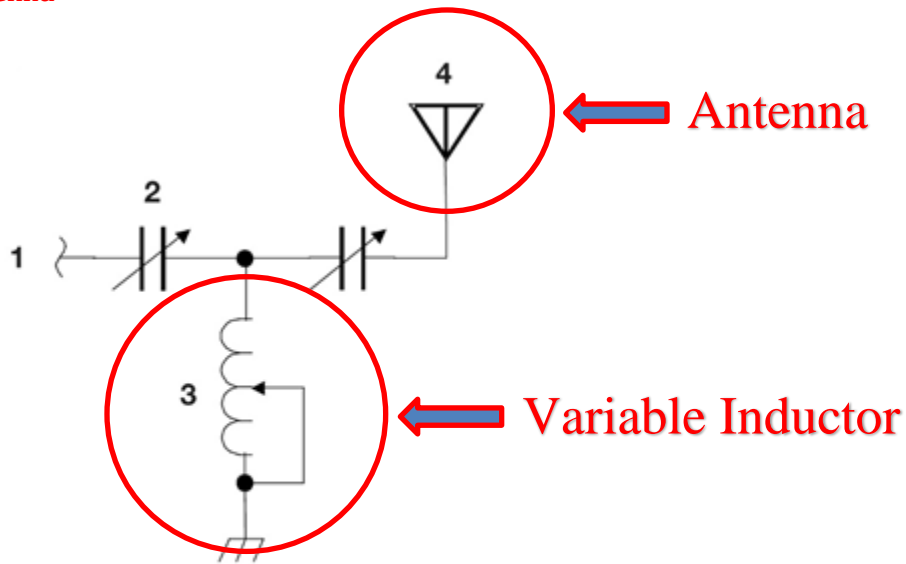


Figure T-3

What do the symbols on an electrical schematic represent?

Electrical components

Which of the following is accurately represented in electrical schematics?

The way components are interconnected

Which of the following devices or circuits changes an alternating current into a varying direct current signal?

Rectifier

What is a relay?

An electrically-controlled switch

Which of the following displays an electrical quantity as a numeric value?

Meter

What type of circuit controls the amount of voltage from a power supply?

Regulator

What component is commonly used to change 120V AC house current to a lower AC voltage for other uses?

Transformer

Which of the following is commonly used as a visual indicator?

LED

Which of the following is combined with an inductor to make a tuned circuit??

Capacitor

What is the name of a device that combines several semiconductors and other components into one package?

Integrated circuit

Which of the following is a resonant or tuned circuit?

An inductor and a capacitor connected in series or parallel to form a filter

Which of the following is a common reason to use shielded wire?

To prevent coupling of unwanted signals to or from the wire

SUBELEMENT T7 – Station equipment: common transmitter and receiver problems; antenna measurements; troubleshooting; basic repair and testing – [4 Exam Questions - 4 Groups]

Which term describes the ability of a receiver to detect the presence of a signal?

Sensitivity

What is a transceiver?

A unit combining the functions of a transmitter and a receiver

Which of the following is used to convert a radio signal from one frequency to another?

Mixer

Which term describes the ability of a receiver to discriminate between multiple signals?

Selectivity

What is the name of a circuit that generates a signal at a specific frequency?

Oscillator

What device converts the RF input and output of a transceiver to another band?

Transverter

What is meant by "PTT"?

The push-to-talk function that switches between receive and transmit

Which of the following describes combining speech with an RF carrier signal?

Modulation

What is the function of the SSB/CW-FM switch on a VHF power amplifier?

Set the amplifier for proper operation in the selected mode

What device increases the low-power output from a handheld transceiver?

An RF power amplifier

Where is an RF preamplifier installed?

Between the antenna and receiver

What can you do if you are told your FM handheld or mobile transceiver is over-deviating??

Talk farther away from the microphone

What would cause a broadcast AM or FM radio to receive an amateur radio transmission unintentionally?

The receiver is unable to reject strong signals outside the AM or FM band

Which of the following can cause radio frequency interference?

-Fundamental overload

-Harmonics

-Spurious emissions

All of these choices are correct

Which of the following is a way to reduce or eliminate interference from an amateur transmitter to a nearby telephone?

Put an RF filter on the telephone

How can overload of a non-amateur radio or TV receiver by an amateur signal be reduced or eliminated?

Block the amateur signal with a filter at the antenna input of the affected receiver

Which of the following actions should you take if a neighbor tells you that your station's transmissions are interfering with their radio or TV reception?

Make sure that your station is functioning properly and that it does not cause interference to your own radio or television when it is tuned to the same channel

Which of the following can reduce overload to a VHF transceiver from a nearby FM broadcast station?

Band-reject filter

What should you do if something in a neighbor's home is causing harmful interference to your amateur station?

-Work with your neighbor to identify the offending device

-Politely inform your neighbor about the rules that prohibit the use of devices that cause interference

-Check your station and make sure it meets the standards of good amateur practice

All of these choices are correct

What is a Part 15 device?

An unlicensed device that may emit low-powered radio signals on frequencies used by a licensed service

What might be a problem if you receive a report that your audio signal through the repeater is distorted or unintelligible?

-Your transmitter is slightly off frequency

-Your batteries are running low

-You are in a bad location

All of these choices are correct

What is a symptom of RF feedback in a transmitter or transceiver?

Reports of garbled, distorted, or unintelligible voice transmissions

What should be the first step to resolve cable TV interference from your ham radio transmission?

Be sure all TV coaxial connectors are installed properly

What is the primary purpose of a dummy load?

To prevent transmitting signals over the air when making tests

Which of the following instruments can be used to determine if an antenna is resonant at the desired operating frequency?

An antenna analyzer

What, in general terms, is standing wave ratio (SWR)?

A measure of how well a load is matched to a transmission line

What reading on an SWR meter indicates a perfect impedance match between the antenna and the feed line?

1 to 1

Why do most solid-state amateur radio transmitters reduce output power as SWR increases?

To protect the output amplifier transistors

What does an SWR reading of 4:1 indicate?

Impedance mismatch

What happens to power lost in a feed line?

It is converted into heat

What instrument other than an SWR meter could you use to determine if a feed line and antenna are properly matched?

Directional wattmeter

Which of the following is the most common cause for failure of coaxial cables?

Moisture contamination

Why should the outer jacket of coaxial cable be resistant to ultraviolet light?

Ultraviolet light can damage the jacket and allow water to enter the cable

What is a disadvantage of air core coaxial cable when compared to foam or solid dielectric types?

It requires special techniques to prevent water absorption

What does a dummy load consist of?

A non-inductive resistor and a heat sink

Which instrument would you use to measure electric potential or electromotive force?

A voltmeter

What is the correct way to connect a voltmeter to a circuit?

In parallel with the circuit

How is a simple ammeter connected to a circuit?

In series with the circuit

Which instrument is used to measure electric current?

An ammeter

What instrument is used to measure resistance?

An ohmmeter

Which of the following might damage a multimeter?

Attempting to measure voltage when using the resistance setting

Which of the following measurements are commonly made using a multimeter?

Voltage and resistance

Which of the following types of solder is best for radio and electronic use?

Rosin-core solder

What is the characteristic appearance of a cold solder joint?

A grainy or dull surface

What is probably happening when an ohmmeter, connected across an unpowered circuit, initially indicates a low resistance and then shows increasing resistance with time?

The circuit contains a large capacitor

Which of the following precautions should be taken when measuring circuit resistance with an ohmmeter?

Ensure that the circuit is not powered

Which of the following precautions should be taken when measuring high voltages with a voltmeter?

Ensure that the voltmeter and leads are rated for use at the voltages to be measured

SUBELEMENT T8 – Modulation modes: amateur satellite operation; operating activities; non-voice and digital communications – [4 Exam Questions - 4 Groups]

Which of the following is a form of amplitude modulation?

Single sideband

What type of modulation is most commonly used for VHF packet radio transmissions?

FM

Which type of voice mode is most often used for long-distance (weak signal) contacts on the VHF and UHF bands?

SSB

Which type of modulation is most commonly used for VHF and UHF voice repeaters?

FM

Which of the following types of emission has the narrowest bandwidth?

CW

Which sideband is normally used for 10 meter HF, VHF, and UHF single-sideband communications?

Upper sideband

What is an advantage of single sideband (SSB) over FM for voice transmissions?

SSB signals have narrower bandwidth

What is the approximate bandwidth of a single sideband (SSB) voice signal?

3 kHz

What is the approximate bandwidth of a VHF repeater FM phone signal?

Between 10 and 15 kHz

What is the typical bandwidth of analog fast-scan TV transmissions on the 70 centimeter band?

About 6 MHz

What is the approximate maximum bandwidth required to transmit a CW signal?

150 Hz

What telemetry information is typically transmitted by satellite beacons?

Health and status of the satellite

What is the impact of using too much effective radiated power on a satellite uplink?

Blocking access by other users

Which of the following are provided by satellite tracking programs?

- Maps showing the real-time position of the satellite track over the earth
- The time, azimuth, and elevation of the start, maximum altitude, and end of a pass
- The apparent frequency of the satellite transmission, including effects of Doppler shift

All of these choices are correct

What mode of transmission is commonly used by amateur radio satellites?

- SSB
- FM
- CW/data

All of these choices are correct

What is a satellite beacon?

A transmission from a satellite that contains status information

Which of the following are inputs to a satellite tracking program?

The Keplerian elements

With regard to satellite communications, what is Doppler shift?

An observed change in signal frequency caused by relative motion between the satellite and the earth station

What is meant by the statement that a satellite is operating in mode U/V?

The satellite uplink is in the 70 centimeter band and the downlink is in the 2 meter band

What causes spin fading of satellite signals?

Rotation of the satellite and its antennas

What do the initials LEO tell you about an amateur satellite?

The satellite is in a Low Earth Orbit

Who may receive telemetry from a space station?

Anyone who can receive the telemetry signal

Which of the following is a good way to judge whether your uplink power is neither too low nor too high?

Your signal strength on the downlink should be about the same as the beacon

Which of the following methods is used to locate sources of noise interference or jamming?

Radio direction finding

Which of these items would be useful for a hidden transmitter hunt?

A directional antenna

What operating activity involves contacting as many stations as possible during a specified period?

Contesting

Which of the following is good procedure when contacting another station in a radio contest?

Send only the minimum information needed for proper identification and the contest exchange

What is a grid locator?

A letter-number designator assigned to a geographic location

How is access to some IRLP nodes accomplished?

By using DTMF signals

What is meant by Voice Over Internet Protocol (VoIP) as used in amateur radio?

A method of delivering voice communications over the internet using digital techniques

What is the Internet Radio Linking Project (IRLP)?

A technique to connect amateur radio systems, such as repeaters, via the internet using Voice Over Internet Protocol (VoIP)

How might you obtain a list of active nodes that use VoIP?

-By subscribing to an on line service

-From on line repeater lists maintained by the local repeater frequency coordinator

-From a repeater directory

All of these choices are correct

What must be done before you may use the EchoLink system to communicate using a repeater?

You must register your call sign and provide proof of license

What name is given to an amateur radio station that is used to connect other amateur stations to the internet?

A gateway

Which of the following is a digital communications mode?

-Packet radio

-IEEE 802.11

-JT65

All of these choices are correct

What does the term "APRS" mean?

Automatic Packet Reporting System

Which of the following devices is used to provide data to the transmitter when sending automatic position reports from a mobile amateur radio station?

A Global Positioning System receiver

What type of transmission is indicated by the term "NTSC?"

An analog fast scan color TV signal

Which of the following is an application of APRS (Automatic Packet Reporting System)?

Providing real-time tactical digital communications in conjunction with a map showing the locations of stations

What does the abbreviation "PSK" mean?

Phase Shift Keying

Which of the following best describes DMR (Digital Mobile Radio)?

A technique for time-multiplexing two digital voice signals on a single 12.5 kHz repeater channel

Which of the following may be included in packet transmissions?

-A check sum that permits error detection

-A header that contains the call sign of the station to which the information is being sent

-Automatic repeat request in case of error

All of these choices are correct

What code is used when sending CW in the amateur bands?

International Morse

Which of the following operating activities is supported by digital mode software in the WSJT suite?

-Moonbounce or Earth-Moon-Earth

-Weak-signal propagation beacons

-Meteor scatter

All of these choices are correct

What is an ARQ transmission system?

A digital scheme whereby the receiving station detects errors and sends a request to the sending station to retransmit the information

Which of the following best describes Broadband-Hamnet(TM), also referred to as a high-speed multi-media network?

An amateur-radio-based data network using commercial Wi-Fi gear with modified firmware

What is FT8?

A digital mode capable of operating in low signal-to-noise conditions that transmits on 15-second intervals

What is an electronic keyer?

A device that assists in manual sending of Morse code

SUBELEMENT T9 – Antennas and feed lines - [2 Exam Questions - 2 Groups]

What is a beam antenna?

An antenna that concentrates signals in one direction

Which of the following describes a type of antenna loading?

Inserting an inductor in the radiating portion of the antenna to make it electrically longer

Which of the following describes a simple dipole oriented parallel to the Earth's surface?

A horizontally polarized antenna

What is a disadvantage of the "rubber duck" antenna supplied with most handheld radio transceivers when compared to a full-sized quarter-wave antenna?

It does not transmit or receive as effectively

How would you change a dipole antenna to make it resonant on a higher frequency?

Shorten it

What type of antennas are the quad, Yagi, and dish?

Directional antennas

What is a disadvantage of using a handheld VHF transceiver, with its integral antenna, inside a vehicle?

Signals might not propagate well due to the shielding effect of the vehicle

What is the approximate length, in inches, of a quarter-wavelength vertical antenna for 146 MHz?

19

What is the approximate length, in inches, of a half-wavelength 6 meter dipole antenna?

112

In which direction does a half-wave dipole antenna radiate the strongest signal?

Broadside to the antenna

What is the gain of an antenna?

The increase in signal strength in a specified direction compared to a reference antenna

What is an advantage of using a properly mounted 5/8 wavelength antenna for VHF or UHF mobile service?

It has a lower radiation angle and more gain than a 1/4 wavelength antenna

Why is it important to have low SWR when using coaxial cable feed line?

To reduce signal loss

What is the impedance of most coaxial cables used in amateur radio installations?

50 ohms

Why is coaxial cable the most common feed line selected for amateur radio antenna systems?

It is easy to use and requires few special installation considerations

What is the major function of an antenna tuner (antenna coupler)?

It matches the antenna system impedance to the transceiver's output impedance

In general, what happens as the frequency of a signal passing through coaxial cable is increased?

The loss increases

Which of the following connectors is most suitable for frequencies above 400 MHz?

A Type N connector

Which of the following is true of PL-259 type coax connectors?

They are commonly used at HF frequencies

Why should coax connectors exposed to the weather be sealed against water intrusion?

To prevent an increase in feed line loss

What can cause erratic changes in SWR readings?

A loose connection in an antenna or a feed line

What is the electrical difference between RG-58 and RG-8 coaxial cable?

RG-8 cable has less loss at a given frequency

Which of the following types of feed line has the lowest loss at VHF and UHF?

Air-insulated hard line

SUBELEMENT T0 – Electrical safety: AC and DC power circuits; antenna installation; RF hazards – [3 Exam Questions - 3 Groups]

Which of the following is a safety hazard of a 12-volt storage battery?

Shorting the terminals can cause burns, fire, or an explosion

What health hazard is presented by electrical current flowing through the body?

- It may cause injury by heating tissue
 - It may disrupt the electrical functions of cells
 - It may cause involuntary muscle contractions
- All of these choices are correct**

In the United States, what is connected to the green wire in a three-wire electrical AC plug?

Equipment ground

What is the purpose of a fuse in an electrical circuit?

To interrupt power in case of overload

Why is it unwise to install a 20-ampere fuse in the place of a 5-ampere fuse?

Excessive current could cause a fire

What is a good way to guard against electrical shock at your station?

- Use three-wire cords and plugs for all AC powered equipment
 - Connect all AC powered station equipment to a common safety ground
 - Use a circuit protected by a ground-fault interrupter
- All of these choices are correct**

Which of these precautions should be taken when installing devices for lightning protection in a coaxial cable feed line?

Mount all of the protectors on a metal plate that is in turn connected to an external ground rod

What safety equipment should always be included in home-built equipment that is powered from 120V AC power circuits?

A fuse or circuit breaker in series with the AC hot conductor

What should be done to all external ground rods or earth connections?

Bond them together with heavy wire or conductive strap

What can happen if a lead-acid storage battery is charged or discharged too quickly?

The battery could overheat, give off flammable gas, or explode

What kind of hazard might exist in a power supply when it is turned off and disconnected?

You might receive an electric shock from the charge stored in large capacitors

When should members of a tower work team wear a hard hat and safety glasses?

At all times when any work is being done on the tower

What is a good precaution to observe before climbing an antenna tower?

Put on a carefully inspected climbing harness (fall arrester) and safety glasses

Under what circumstances is it safe to climb a tower without a helper or observer?

Never

Which of the following is an important safety precaution to observe when putting up an antenna tower?

Look for and stay clear of any overhead electrical wires

What is the purpose of a gin pole?

To lift tower sections or antennas

What is the minimum safe distance from a power line to allow when installing an antenna?

Enough so that if the antenna falls unexpectedly, no part of it can come closer than 10 feet to the power wires

Which of the following is an important safety rule to remember when using a crank-up tower?

This type of tower must not be climbed unless retracted or mechanical safety locking devices have been installed

What is considered to be a proper grounding method for a tower?

Separate eight-foot long ground rods for each tower leg, bonded to the tower and each other

Why should you avoid attaching an antenna to a utility pole?

The antenna could contact high-voltage power lines

Which of the following is true when installing grounding conductors used for lightning protection?

Sharp bends must be avoided

Which of the following establishes grounding requirements for an amateur radio tower or antenna?

Local electrical codes

Which of the following is good practice when installing ground wires on a tower for lightning protection?

Ensure that connections are short and direct

What is the purpose of a safety wire through a turnbuckle used to tension guy lines?

Prevent loosening of the guy line from vibration

What type of radiation are VHF and UHF radio signals?

Non-ionizing radiation

Which of the following frequencies has the lowest value for Maximum Permissible Exposure limit?

50 MHz

What is the maximum power level that an amateur radio station may use at VHF frequencies before an RF exposure evaluation is required??

50 watts PEP at the antenna

What factors affect the RF exposure of people near an amateur station antenna?

-Frequency and power level of the RF field

-Distance from the antenna to a person

-Radiation pattern of the antenna

All of these choices are correct

Why do exposure limits vary with frequency?

The human body absorbs more RF energy at some frequencies than at others

Which of the following is an acceptable method to determine that your station complies with FCC RF exposure regulations?

-By calculation based on FCC OET Bulletin 65

-By calculation based on computer modeling

-By measurement of field strength using calibrated equipment

All of these choices are correct

What could happen if a person accidentally touched your antenna while you were transmitting?

They might receive a painful RF burn

Which of the following actions might amateur operators take to prevent exposure to RF radiation in excess of FCC-supplied limits?

Relocate antennas

How can you make sure your station stays in compliance with RF safety regulations?

By re-evaluating the station whenever an item of equipment is changed

Why is duty cycle one of the factors used to determine safe RF radiation exposure levels?

It affects the average exposure of people to radiation

What is the definition of duty cycle during the averaging time for RF exposure?

The percentage of time that a transmitter is transmitting

How does RF radiation differ from ionizing radiation (radioactivity)?

RF radiation does not have sufficient energy to cause genetic damage

If the averaging time for exposure is 6 minutes, how much power density is permitted if the signal is present for 3 minutes and absent for 3 minutes rather than being present for the entire 6 minutes??

2 times as much

The End!