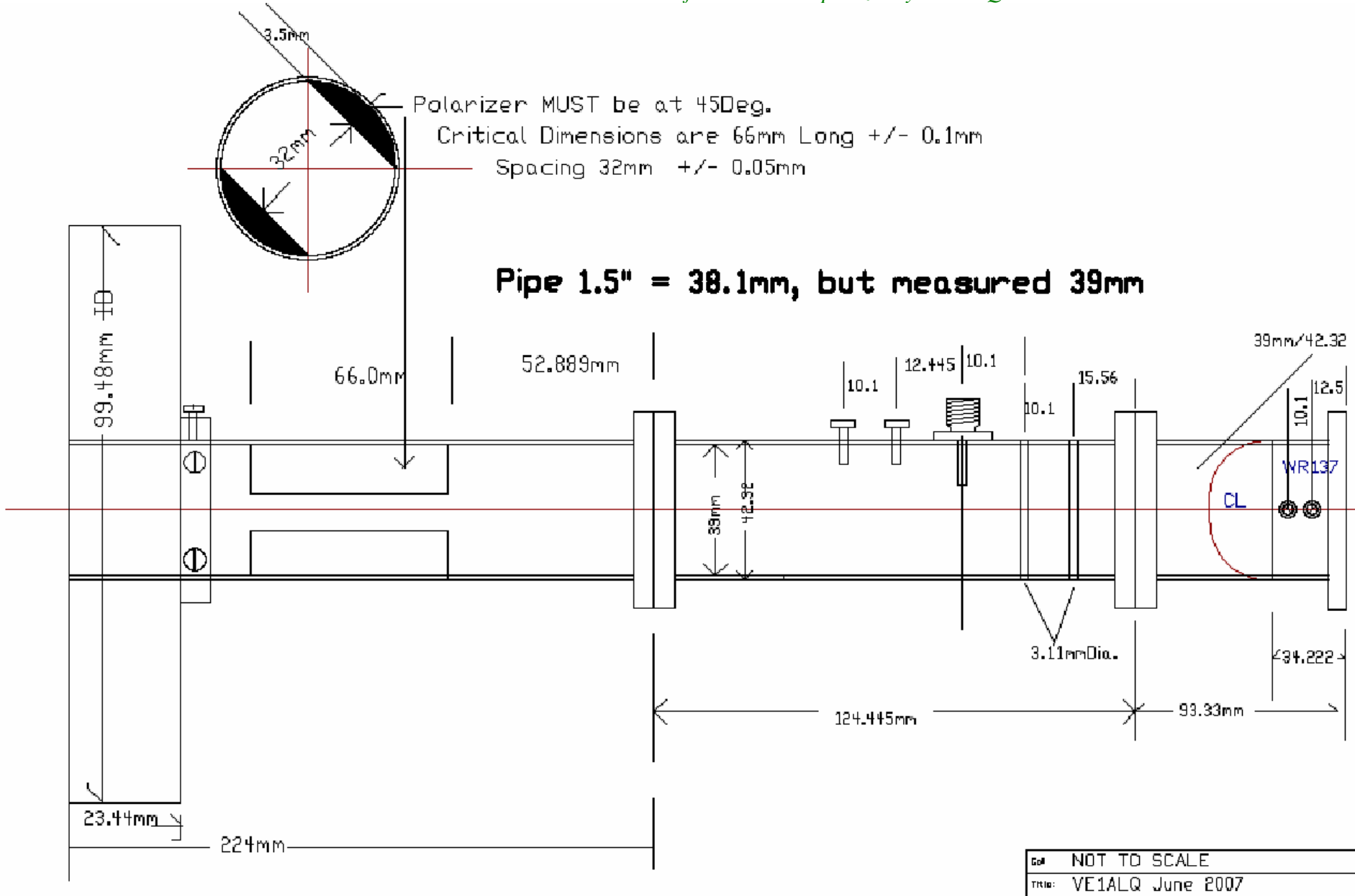


6cm Feed setup, ports WG/Coax

CT1DMK

Original from CT1DMK / LX1DB, with Super Scalar VE4MA
 Revised for 6cm and imp. Sizes by VE1ALQ

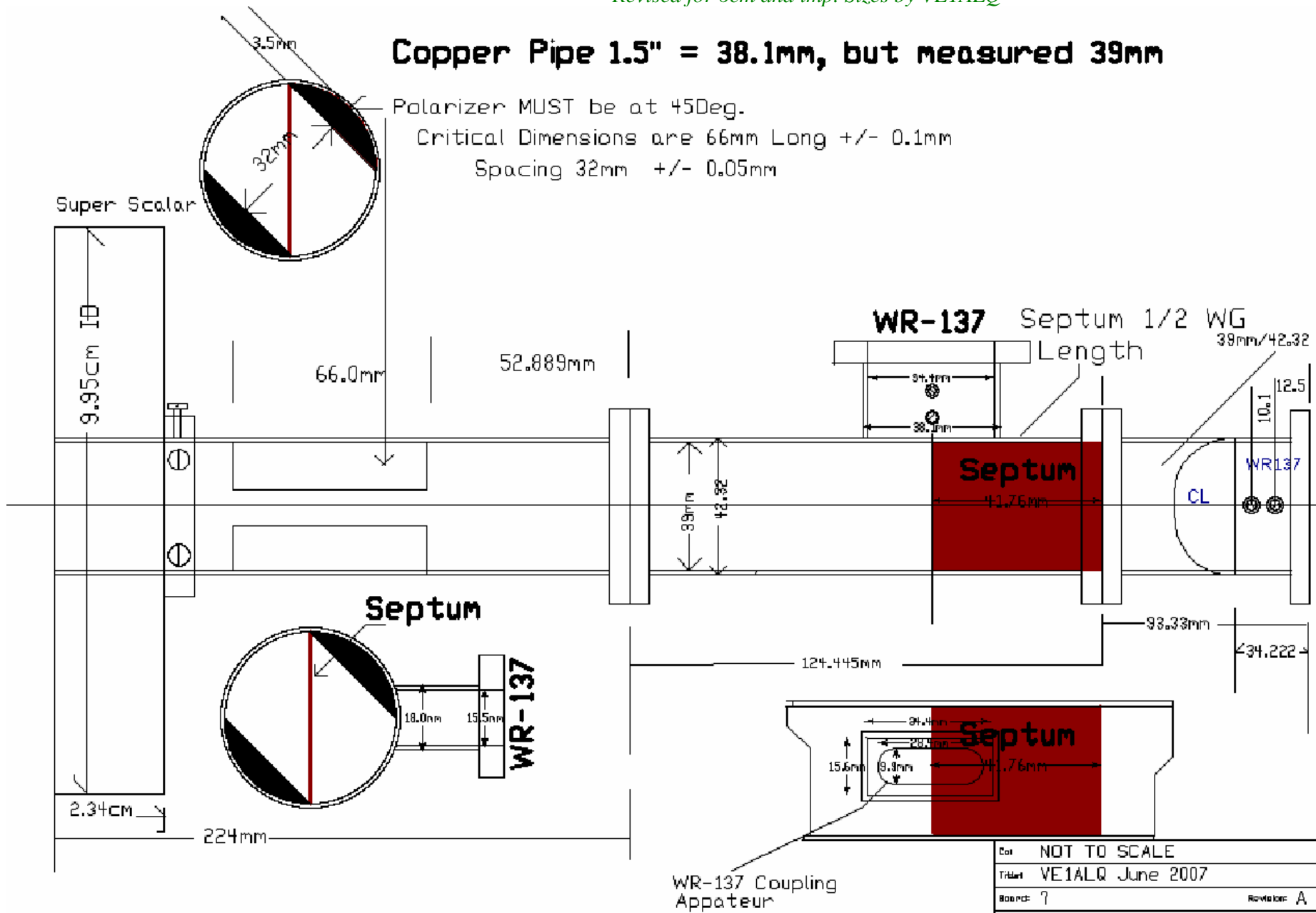


6cm Feed setup, ports WG/WG

CT1DMK

Original from CT1DMK, with Super Scalar VE4MA feed.
 Revised for 6cm and imp. Sizes by VE1ALQ

Copper Pipe 1.5" = 38.1mm, but measured 39mm



Col	NOT TO SCALE
Title	VE1ALQ June 2007
Source	?
Revision	A

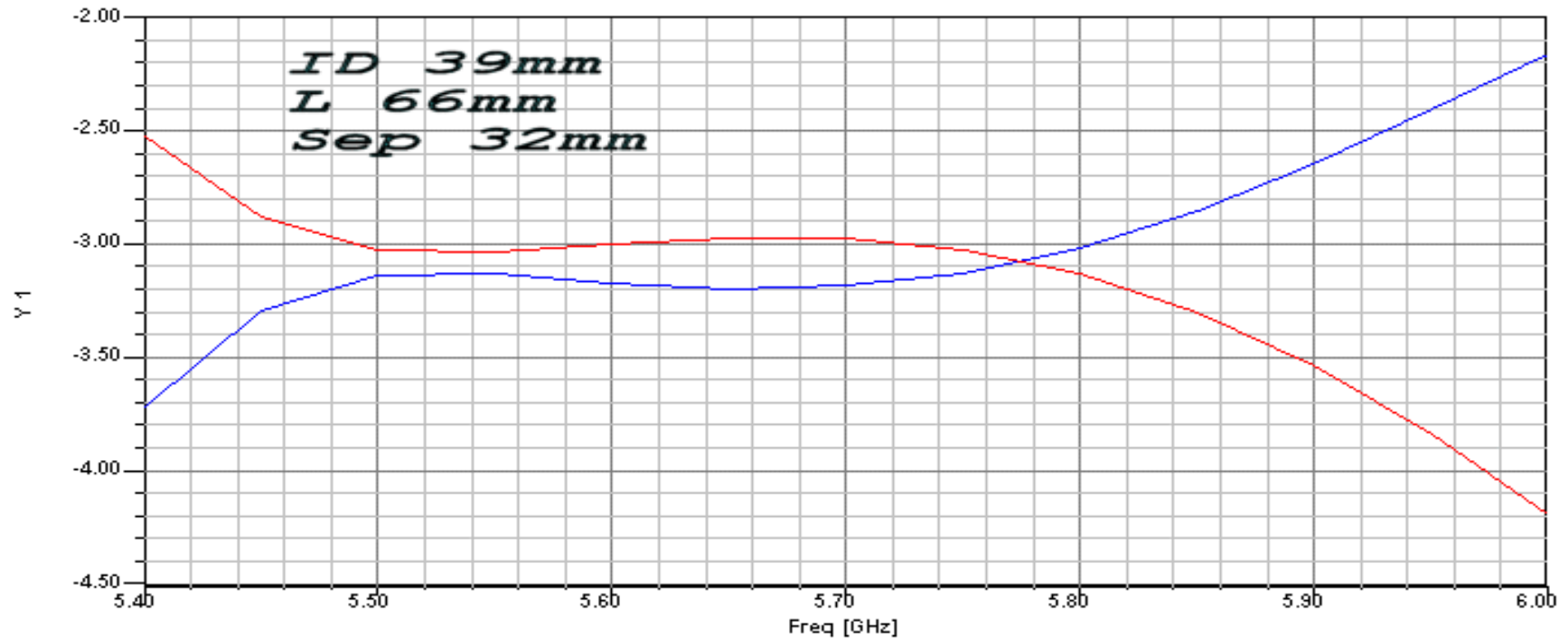
Polarizer section simulation.

CT1DMK

10 Jul 2007

Ansoft Corporation
XY Plot 1
HFSSModel1

02:21:39



Best dimensions:

Diameter = 39.0mm
Length = 66.0 mm
Separation = 32.0 mm