

is terminated with appropriate Molex pins for insertion into the trunk-mount Accessory Plug on the Control Head or the under-dash Power/Accessory Plug. The speaker housing and mounting bracket assembly is 5" x 5" x 3", and the mounting surface is 4 1/4" x 1 1/4", with four 3/32" screw slots.

tact/switch-box is installed to unmute CTCSS squelch when the microphone is lifted. The center conductor of the shielded hang-up box cable connects to pin 3, the shield to pin 2.

HANG-UP BOX

If the CTCSS feature is included in the transceiver, the optional 70-2195 Microphone Hang-Up con-

AUXILIARY DEVICES

Pins 1 and 8 are available for auxiliary connections necessary with certain optional features. Wiring details for these are found in the literature for the option.

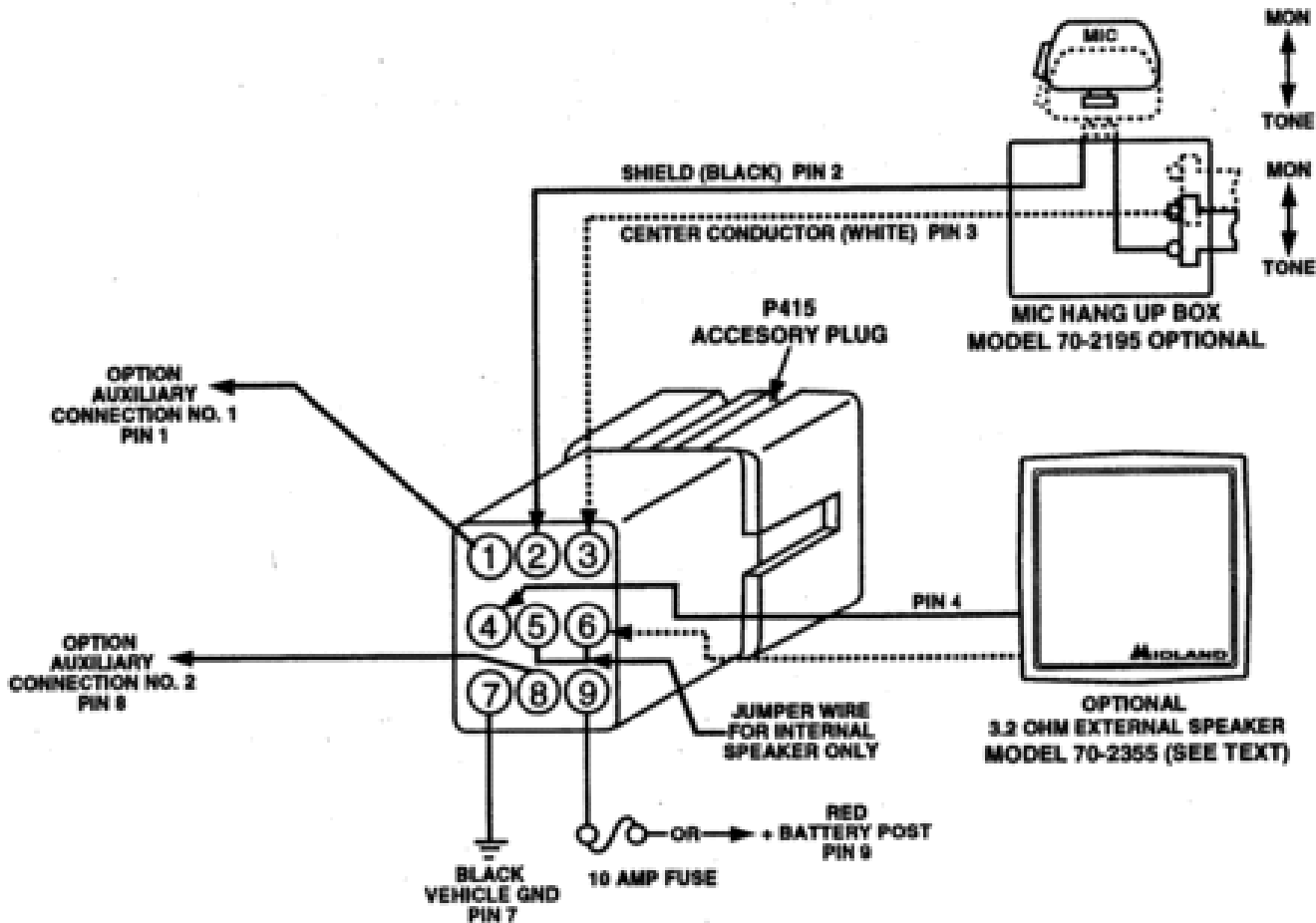


Figure 3 - 1 Under-Dash — Power/Accessory Plugs