

Club Repeaters:
Erie: 146.610-
PL 127.3 hz

Waterford: 146.82-
PL 186.2 hz

QUARAE



Volume 3, Issue 10

November 2004

Simulated Emergency Test

On Saturday October 20th, approximately 30 Erie County ARES members participated in the annual ARES Simulated Test which helps hams hone their communication skills during an emergency. This years scenario was quite unique because it is something that is experienced once every couple years in the Erie Area. This years scenario was that a lake effect rain storm was expected to occur overnight. But the cold front dropped farther south than expected allowing cold air to pour into the lower levels of the atmosphere in Erie County. Thus the expected rain storm became an ice storm for most of the overnight hours. By 7:00 AM between .25 and .50 inches ice had accumulated on trees, power and telephone lines, and road surfaces. Here is a break down of the activities that took place

7:00 AM - Ice storm changed to a heavy lake effect snow event primarily from I-90 south through all of Erie County. Wind speeds increasing to 25 - 40 MPH where snow bands are located.

8:45 AM - Since 7:00 AM 6 inches of snow have already accumulated. Near zero visibility from I-90 south. I-90 closed due to blowing snow with zero visibility that has caused numerous accidents. Shelters being opened to help those stranded by the closing and/or accidents.

9:00 AM - Primary net called up on 146.61 and 146.82 repeaters

9:10 AM—Tactical net called up on the 146.70 and 147.27 repeaters

9:45 AM - The 61 and 82 repeaters loose power. The primary net is transferred to 146.55 for a bit.

10:15 AM - Heavy snow band starts to shift north-

ward into the city as wind direction changes. Snowfall in southern areas gradually decreases from south to north. Snowfall in the City increases dramatically with zero visibility and snowfall rates of 3 inches per hours.

10:45 AM - Link from 27 to 70 is lost.

11:00 AM - The Heavy snow band is now situated across northern Erie County from I-90 north. South of I-90 only light snow.

11:30 AM - Band begins to lift north over the lake with rapidly decreasing snowfall from I-90 northward. PennDOT Road crews beginning to clear a single lane of I-90 to allow for traffic flow.

11:45 AM - I-90 now open one lane in each direction. Shelters begin to empty out.

Noon - Shelters close.

Amateur Radio Emergency Services received some needed PR on WJET Action News 24. As part of the net, 30 different agencies were visited along with 4 pieces of traffic were passed to the Western PA Phone and Traffic Net. A big thanks goes out to those who participated in the drill.



Officers and Contacts – 2004

President

Chris Robson, KB3A

Vice President

Jack Haven, N3RKO

Treasurer

Frank Graziano, KD3D

Secretary

Dianne Miller, K3LD

Chairman of the Board

Robert Fuller, N3LBI

Board Members

Bob Schwimmer, N3FAW

Bob LaPlaca, KC2HVX

Ron Prindle, N3BXL

Joe McLain, KB3ALU

ARES/RACES E.C.

Dave Wellman, WX3E

ucdavid@aol.com

SKYWARN E.C.

Steve Lajohn, N3SRD

slajohn@adelphia.net

Membership Chairmen

Bob Schwimmer, N3FAW

bobn3faw@verizon.net

Clubhouse & Repeater

Committee Chairman

Steve LaJohn, N3SRD

slajohn@adelphia.net

Volunteer Examiner

Coordinator

Rob Jacobs, N3OCL

n3ocl@velocity.net

Webmaster

Bob LaPlaca, KC2HVX

rlaplaca@adelphia.net

Newsletter Editor

John Lis, N3NKV

john@jjlis.com

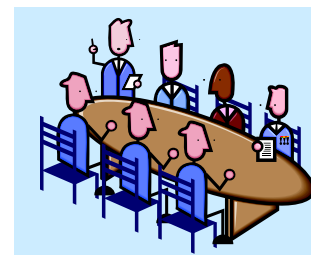
Upcoming Events

Election of Officers



The Election of Officers for 2005 will be held at this month's meeting on Thursday night at the Clubhouse. It may be a bit cold out. We'll have the heat running in the clubhouse. The meeting starts at 7 pm.

Hope to see everyone there!



Board of Directors Meeting-
Tuesday November 23rd

Location to Be Announced

The Holiday Party will be held on January 15, 2005 at Nunzi's Restaurant on East 38th St. Menu Information and Reservations will be taken at the November meeting at the Club House.



RAE General Membership Meeting Minutes October 9, 2004

RAE Association of Erie General Membership Meeting October 9, 2004

Board Members Present: KB3A, N3RKO, KD3D, N3FAW and K3LD

Not present: N3LBI, KC2HVX, N3BXL and KB3ALU

Meeting brought to order by President KB3A at 7:08, General Membership Meeting at the RAE clubhouse.

Secretary's report- K3LD: motion to accept the minutes that were printed in the QuaRae for August

Motion: W3WBT Second: WB3DOM

Treasurer's report- report given

Board of Directors report-K3LD –election committee looking for nominations, website, repeater, batteries for .82 and for .61 controller, PA QSO in October, and JOTA.

Membership- N3FAW: 22 members for 2005

Membership is due at this time. Contact Bob N3FAW if you haven't received your membership form.

We are accepting Visa and Mastercard payments.

Also if anyone is interested N3FAW is stepping down as membership chairman after many years of dedicated service. If you would like to take it over contact N3FAW.

QuaRae: N3NKV – John is running low on articles if anyone has any please send it to him.

ARES: WX3E- Picnic at Glenwood Zoo was a success, both Dave and Steve plan on that

being an annual event. WW3JC wants to do some classes Level I for M-com, any one interested contact him.

Repeater: N3APP- Repeater batteries in place with .82 and .61.

Clubhouse: AD4UL- RAE garage sale at meeting October 9.

AD4UL motion for Bob the next door neighbor who has been mowing and trimming the lawn and watching over the clubhouse and letting us know if anything is happening. Thank you and \$50.00 2nd N3RKO all approved

Contest- KB3A: PA QSO – October 9th & 10th. The club will have stations set up.

Nominations for Elections: President - none VP- none Treasurer (KD3D)Frank Secretary - none

Board nominees Neal Shea (N3ZNP) N3FAW (Bob Schwimmer) KB3A (Chris Robson)

VE: K3LD- If anyone is interested to test you have to contact Rob (N3OCL) cell phone # 814-881-5238 or email at N3OCL@verizon.net so that we can make sure to have the test at the RAE clubhouse.

50/50: KB3B

Motion to adjourn: WB3DOM Second: N3IQ

Meeting adjourned at 7:43

Submitted by K3LD

It's Membership Renewal Time!

This past Saturday we set the clocks back an hour, that means that 2005 is just about around the corner. Membership dues for 2005 are now due. Membership dues for 2005 remain the same as in the past 10 or more years: Full: \$20. Associate: \$16, Student: \$8. Family Members 50% Discount. As before, newly licensed hams can receive free membership for their first year as Amateur Radio Operators. If you can attend the RAE meeting Thursday, please if possible bring in your dues payment for 2005.

Otherwise if you can mail it to me it would be appreciated. It's an easy way to keep me from bothering you again!



Full Name: _____

Callsign: _____ **Date of Birth** _____

Address: _____

City, State Zip _____

Telephone: _____ **Cell Phone:** _____

Email Address: _____

ARRL Member? Yes No

If you'd like to pay dues with a credit card, please write Card Number, Exp. Date, Amount to Pay, and Sign below.

Name on Card _____

Card Number _____ **Exp Date** _____ **Amt.** _____

Sign _____ (Charge will be from Robson Company)

Thanks from the club and me.

73,

Bob N3FAW.

PA QSO PARTY



Bob N3LBI waiting for that rare county



Wattsburg Bob KC2HVX



Jerry W2FS and Micki KE3XR



Chris KB3A wants to join in on the excitement!



Jack N3RKO

The Results.

CW Contacts: 80

SSB/FM Contacts: 657

Counties Worked: 63

Sections Worked: 67

Times Worked W3UU: 7

Total Score: 103187

ARRL Emergency Communications Courses

by Lee Robinson WW3JC

Why are they needed ?

Shortly after the 9/11 terrorism attacks the shortcomings of the public safety radio systems became apparent and a need for a reliable back up radio system arose. When the Federal Emergency Management Agency (FEMA) reviewed their operational plans, they went to the ARRL and awarded them a \$117,000 grant to put together a series of Emergency Communications (EmComm) courses and sponsored training for Amateur Radio Operators. ARRL then contacted the Connecticut Distance Learning Center and an internet based training program was assembled. This course is still available today. Now ARRL is branching into hybrid, or combination internet and local classes where you take your exam over the internet and get you training right at your local club.



What do you learn ?

Imagine an Emergency Communications course that covers topics like Public Service Events, An Introduction to Traffic Handling, Skywarn, Hurricane Watch Nets, how to assist agencies like Red Cross, Salvation Army, Emergency Management, Hazmat, DMAT, incident command system, public safety radio systems, private radio systems, VHF/UHF repeaters, HF operations and digital communications. All in one manual. Some knowledge in ALL the above areas is essential for the modern day "Emergency Communicator". As an Amateur Radio Operator you could be called to assist at any of the above locations or functions on a moments notice. Do you remember the boy scout motto "Be Prepared"? That's what **Emergency Communications Level One** course is all about. It is essentially an introduction to all these things. I have been involved in emergency communications for almost 20 years and this is

the finest Ham Radio training manual I have ever seen. There is already talk about making this course a requirement for ARES/RACES membership in some parts of the country. I hope they do.

Emergency Communications Level Two

Don't stop there! Once you have a trained group of professional communicators like these Level One candidates out in the field you now need a Net Control Station to coordinate their efforts in an efficient manner. Think being a Net Control Station is a piece of cake? Think again ! The Net Controls on the local nets make things go so smoothly sometimes they seem transparent. Let me tell you that this did not happen overnight. Everyone of them can look back to their first few nets and think about what a mess they were. Perhaps if they had completed their **Emergency Communications. Level Two** course they would have had a better insight into the responsibilities of the Net Control Station and how best to accomplish them.

Emergency Communications Level Three

Don't stop there ! Long before those trained professional communicators hit the field and a Net Control Station began coordinating all their efforts, a whole lot of planning had to be done. Meetings with Emergency Management staff, and the HAZMAT team, and the Red Cross, and the Salvation Army, and the DMAT Team, and the hospitals, and the fire and police departments. Well you know how meeting go. After of all these meetings a Disaster Plan had to be formulated and put in writing so that the right hand knows what the left hand is doing. Of course if you have completed you **Emergency Communications Level Three** course you would already have an understanding of all these agencies and pretty much know what their emergency communications needs were and how to meet those needs.

Continued on Page 7

How do I get started ?

All of these courses can be taken on-line. However they were so back logged that it took me over three months to get into my Level One class. After that it didn't take quite as long to get into Level Two and Level Three classes. You can take up to six weeks to complete each of these classes, that's a total of 18 weeks !

Well I have a better idea. How about doing the entire Level One course in two days ? The ARRL suggests that we should spend one hour per chapter or 20 hours per course. Well how about you read the first and last chapters at home, now were down to 18 hours. How about we push the envelope on the shorter chapters and do the whole thing in 16 hours or two 8 hour days on one weekend ? Sounds like a plan to me. How about you ?

Money, Money, Money

ARRL charges a total of \$75 for this course if you are not an ARRL member. If you are an ARRL member the cost is \$45. But one the really great benefits of being an ARRL member is that you will receive 100% tuition reimbursement after you complete the course. **Total tuition cost to ARRL members \$ 0.00 dollars.** You do however have to purchase a study guide for the course at a cost of \$12.95 plus shipping. Now that makes sense to me. How about you ?

An EmComm Class is planned for the Erie Area during the weekend of November 20th and 21st at the RAE

Clubhouse. To register for the class, please contact Lee Robinson WW3JC at 739-2094 or via e-mail at ww3jc@velocity.net.



Unauthorized Users and Interference on the Repeaters

Willful and/or malicious interference with any of the repeaters is a violation of federal law. This includes unidentified transmissions, playing music or other forms of broadcasting, keying down on a QSO, obscene language, willful transmission of a falsified emergency call and using the repeater for any illegal use.



The FCC and the Radio Association of Erie have considerable resources available to track down and identify such interference. Users who monitor illegal activity are urged to make a note of the time, content, duration and beam heading from the input frequency (if available) and contact Chris Robson KB3A or any of the repeater control operators via telephone or on an alternate frequency.

Resist the understandable temptation to "key-down" on the offender. Not only is it illegal to do so, but it may hamper attempts to get a fixed location on the interfering signal. Do not acknowledge nor talk about the malicious interference while on club repeaters. If you must do so, then do it on the phone or another frequency.

Radio Association of Erie
P.O. Box 844
Erie, Pa 16512

Swap and Shop

For Sale—HEATHKIT SB-1000 (1000 watt) linear HF amplifier with manuals---\$500.00 or best offer. Contact Joe Ponchak KA3CPV at 836-9829 or via e-mail ka3cpvgrmpap@velocity.net.

For Sale—Info Center- Model FB-745 FLAT BED SCANNER 9600 DPI w/ 36 Bit True Color Requires 486 or Pentium Processor -- 600x1200 DPI Optical Resolution. Complete with all cables ETC. Brand new \$15.00 or best offer. Contact Bob Dziubkowski K3SBU at 814-899-2107 or e-mail: k3sbu-1@juno.com

For Sale—1-30 foot tower (3 ten foot sections) \$60.
1 - three element beam antenna (20 - 15 - 10 meters) \$50.
Contact Dick Bainbridge W3GZO at 814-838-4878 or e-mail w3gzo@velocity.net



Make sure to Check into the
Erie County ARES/RACES/Skywarn Net
each Sunday at 9pm
on the 146.610 and 146.70 repeaters.

