

Stanley Work Box Hack

by [graphicsman](#) on January 6, 2009

Table of Contents

- License: Attribution Non-commercial Share Alike (by-nc-sa) 2
- Intro: Stanley Work Box Hack 2
- step 1: Add 2x4's To The Top 2
- step 2: 3 Levels of Storage - Bottom 3
- step 3: Middle Tray 3
- step 4: Top Tray 3
- step 5: Parts Box 4
- step 6: Use The built In Handle 4
- step 7: All Opened Up 5
- Related Instructables 5
- Advertisements 6
- Comments 6

License: [Attribution Non-commercial Share Alike \(by-nc-sa\)](https://creativecommons.org/licenses/by-nc-sa/4.0/)   

Intro: Stanley Work Box Hack

In the quest for the perfect tool box (I have a tool fetish), I needed a box to store my tools for an on-site job and had 2 criteria.

1. The box needed to be light enough to move myself and
2. Maximize the interior space to hold enough tools.

The big commercial boxes are secure enough but way too heavy. I liked the Stanley large roller box and even if it was plastic, knew it had potential. I studied it for a while and I planned to nest self contained trays that could be lifted out.

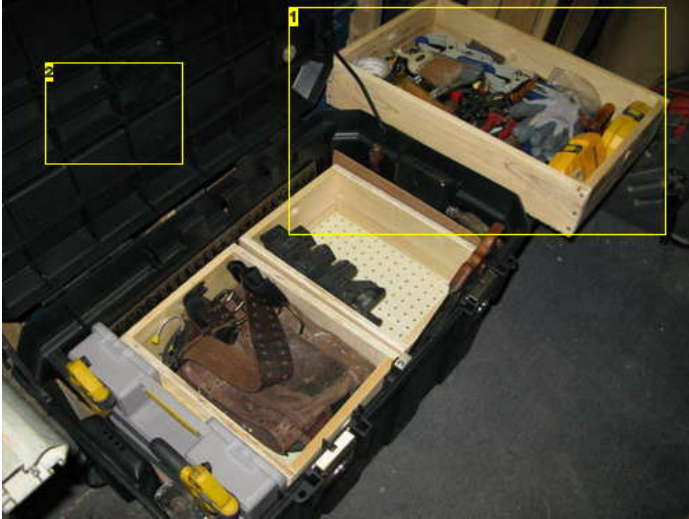


Image Notes

1. Top tray rests on pulled out handle.
2. I'm planning on mounting saw blades and squares to the lid.

step 1: Add 2x4's To The Top

This is important if you want to use a miter saw or cut some wood. It's a good sturdy platform to work from. I attached the 2x4's from inside the top lid with recessed crown bolts so nothing would stick through. Then I can screw a piece of plywood for a work top.



Image Notes

1. Crown nuts inserted downwards hold 1/4" bolt from inside lid.

step 2: 3 Levels of Storage - Bottom

Start with the bottom compartment. The photo doesn't show it very well but I used 3/4"x 8" pine to create a box. This area is for power tools and cords. The edge of the compartment holds the upper trays.



Image Notes

1. This is the bottom compartment. It actually sits on the bottom of the box. Ah Gravity!
2. This is the 2nd level tray. More in the next step.

step 3: Middle Tray

This tray holds tool belt, safety gear and other stuff. It's made from 3/4"x5" pine with 1/4" peg board for the bottom. I like using drywall screws for all of the fasteners.



Image Notes

1. These are the middle trays. Holes drilled in the ends allow removal.
2. Finger holes on each end.
3. Since the box is bigger at the top than the bottom, extra side room is used for long items like saws, levels and pry bars.

step 4: Top Tray

Here's the top tray. It holds all of the hand tools and is the heaviest. Since this post, I've divided it into 2 trays making it easier to remove. It's about 4" deep.



Image Notes

1. There's some room left at this end that holds a parts box, clamps and a square.

step 5: Parts Box

Every good tool box has a place for small parts. I found this one at HD and it just fits this area. It holds line, drill bits, etc.



Image Notes

1. Plenty of extra room for the odd shaped stuff. I mounted 1/4" ply the the end to slip the tools down behind.

step 6: Use The built In Handle

Slid out the built in handle to rest the trays on when the box is open.



step 7: All Opened Up

Here she is in all her glory. I used the slide out handle to hold the top tray and it doesn't tilt over at all. I have access to all the tools and I was able to get most of my tools in the box. I made some ramps for my pickup so I could roll her on.

All in all, I'm very happy but I'm sure I can futher this hack to include power outlets, sun shade, radio and refreshments. Let me know what you think.

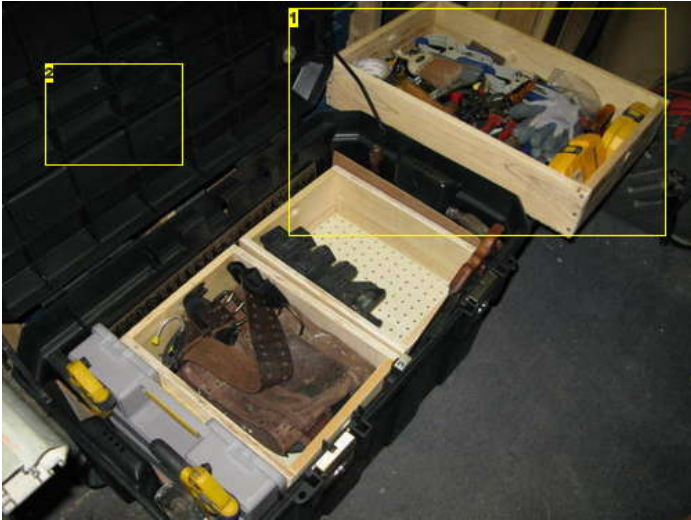


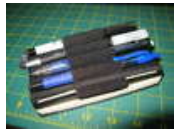
Image Notes

1. Top tray rests on pulled ot handle.
2. I'm planning on mounting saw blades and squares to the lid.

Related Instructables



Toolbox Ideas
(slideshow) by
90kar08



Moleskine
Writing Tools
Hack by
graphicsman



Utility Cart by
neffk



Stanley Cups -
Keep Your
Tools Safe and
Handy, and
Save A Skunk!
by Gorfram



Acquiring Tools
by Tap33



A toolbox-
bench for
workshoplessnes
by Wade Tarzia



Ryobi 18vdc
Flashlight With
Ipod or Cell
Phone Charger
Output by
graphicsman





Daisy Duke
Toolbox by
SlimJim


Comments

10 comments [Add Comment](#)


 **ClayOgre** says: Jan 19, 2009. 10:23 AM [REPLY](#)
...for some reason, this makes me think of
<http://www.taunton.com/finewoodworking/ProjectsAndDesign/ProjectsAndDesignArticle.aspx?id=27038>


 **graphicsman** says: Jan 19, 2009. 11:47 AM [REPLY](#)
Wow, I've seen this somewhere before and lost track of it. Thanks for sharing. Another new project?

 **Scammah** says: Jul 12, 2009. 8:31 PM [REPLY](#)
I thought of the same thing. I believe "Make" did an article about it once before.


 **RicoSPD** says: Jan 19, 2009. 8:29 AM [REPLY](#)
I've got an army surplus crate that used to hold a portable arc welder kit. This is exactly what I should do with it. Right now, it's holding my circular saw, belt sander, orbital sander and dremel kit (with plenty of room to spare). Now I just need to find some heavy duty casters (the box already weighs a ton w/o the tools in it).


 **graphicsman** says: Jan 19, 2009. 11:46 AM [REPLY](#)
Sounds like a plan. Go for it!

 **unjust** says: Jan 7, 2009. 8:33 AM [REPLY](#)
how much does it weigh? one big reason i've never gone with a rolling tool box is that the wheels seem to fail on non-road case style, and those are not able to go up stairs.

 **graphicsman** says: Jan 7, 2009. 10:03 AM [REPLY](#)
Well, as expected, it's pretty heavy, I'd say well over 100lbs. The wheels that came on in are pretty good and haven't failed yet but I'm only moving it from the shop to the truck and around the site a little. If they do fail, I'll replace them with balloon tires of some sort. The box itself is a tank which is why I chose it in the first place. God luck.

 **alex-sharetskiy** says: Jan 6, 2009. 8:33 PM [REPLY](#)
Awesome, too bad i don't have that many tools...

 **Spoonman** says: Jan 6, 2009. 12:11 PM [REPLY](#)
This is very nice. I've been contemplating a similar setup for my tools at home since they're now dispersed across multiple toolboxes and I can never find anything. Thanks for the post, a lot of good ideas in this one!

 **graphicsman** says: Jan 6, 2009. 1:22 PM [REPLY](#)
That's what I was doing. Too many boxes to manage. Good luck. Let me know how it works out. Vote for my instructable.
