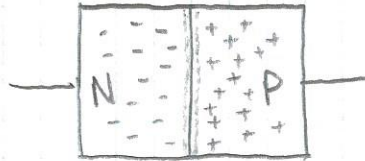


VARACTOR DIODES (VARICAP DIODES)

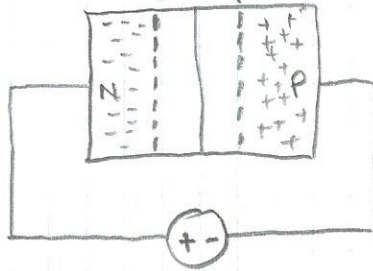


- ALL DIODES HAVE THIS BEHAVIOR

- VARACTORS OPTIMIZED FOR LOWER LOSS / HIGHER Q

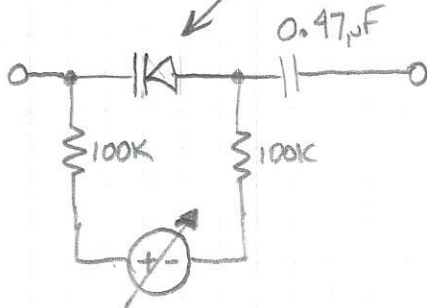


DEPLETION REGION

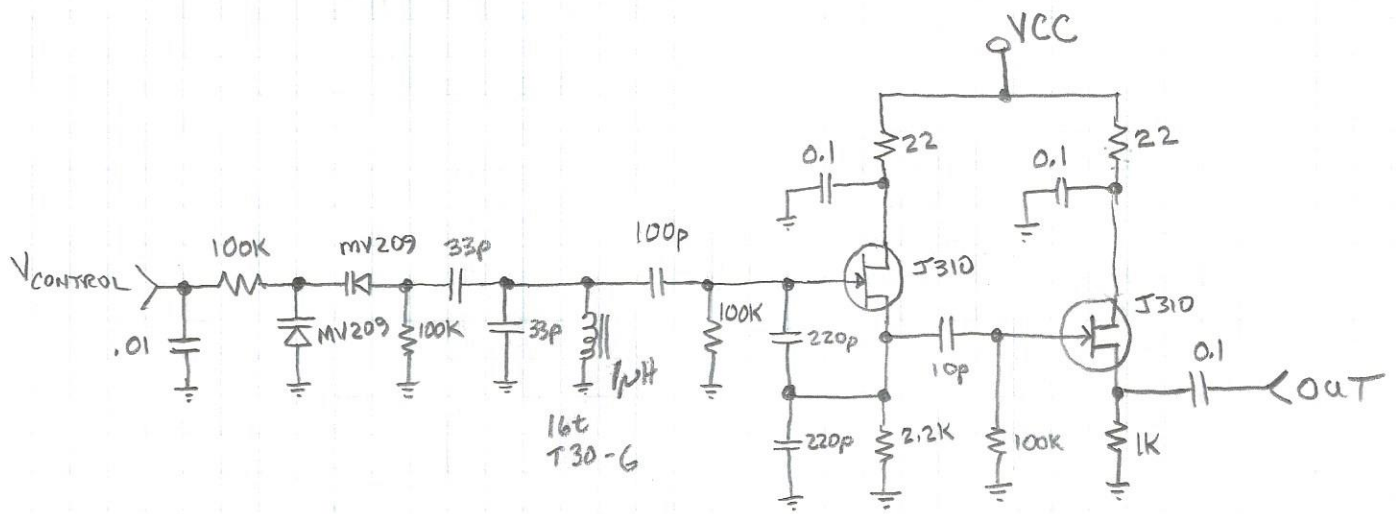


W2AEW

WAS DRAWN WITH WRONG POLARITY IN THE VIDEO



VOLTAGE CONTROLLED OSCILLATOR (VCO)



WZAEW