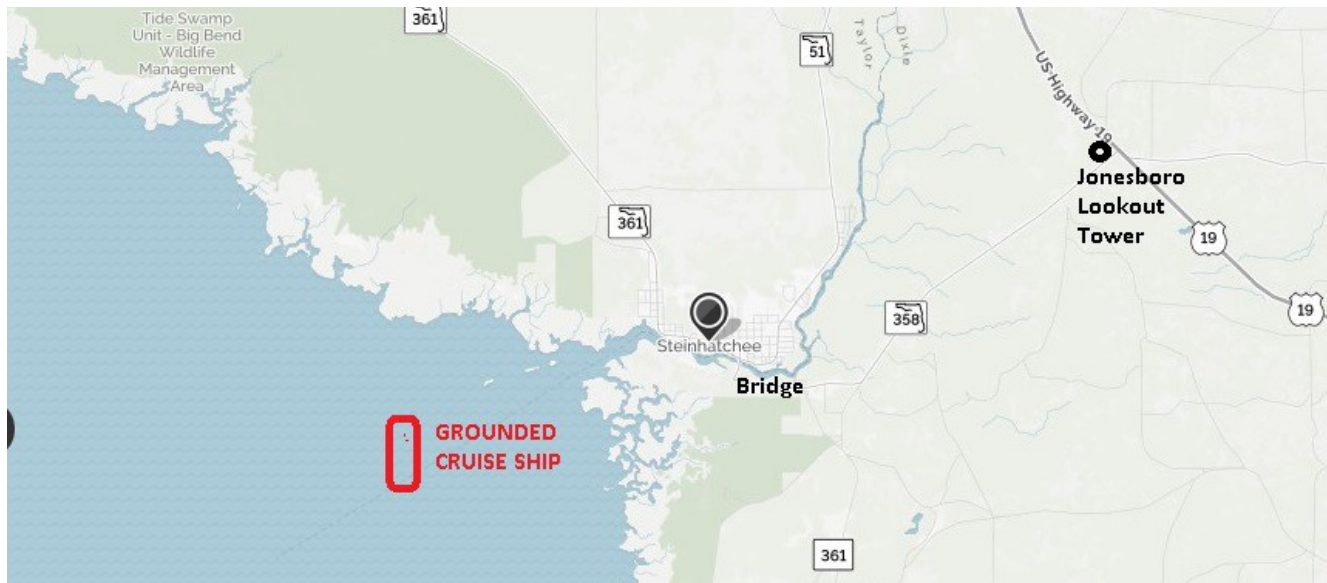
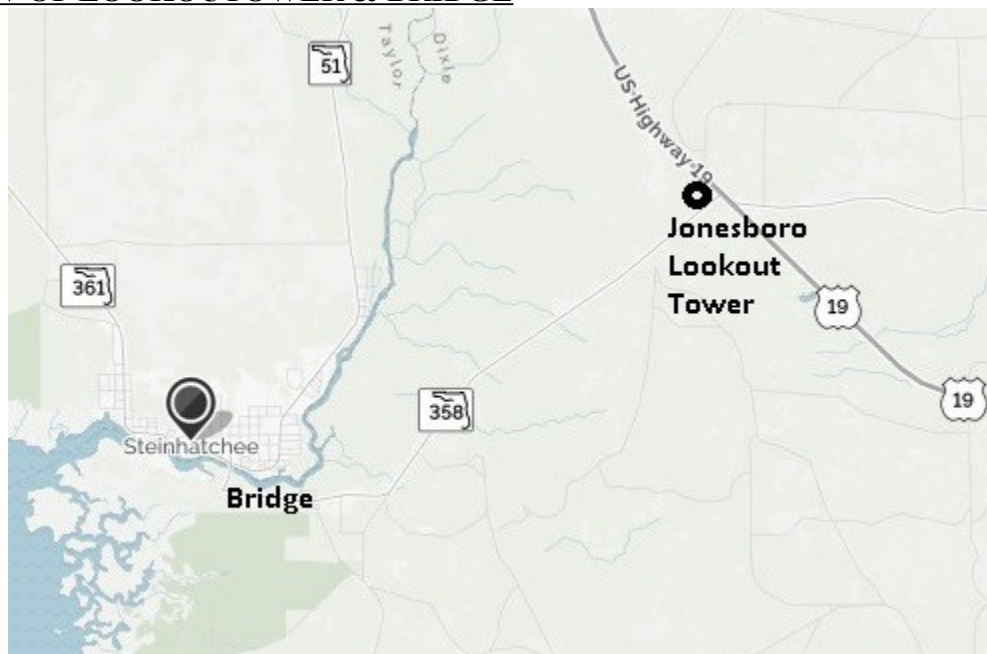


ICS 201 INCIDENT BRIEFING: 1030 LOCAL TIME OCT 7 2017
INCIDENT: EXERCISE STEINHATCHEE STORM
(4) MAPS & SKETCHES – PAGE 1



OVERVIEW OF LOOKOUT TOWER & BRIDGE

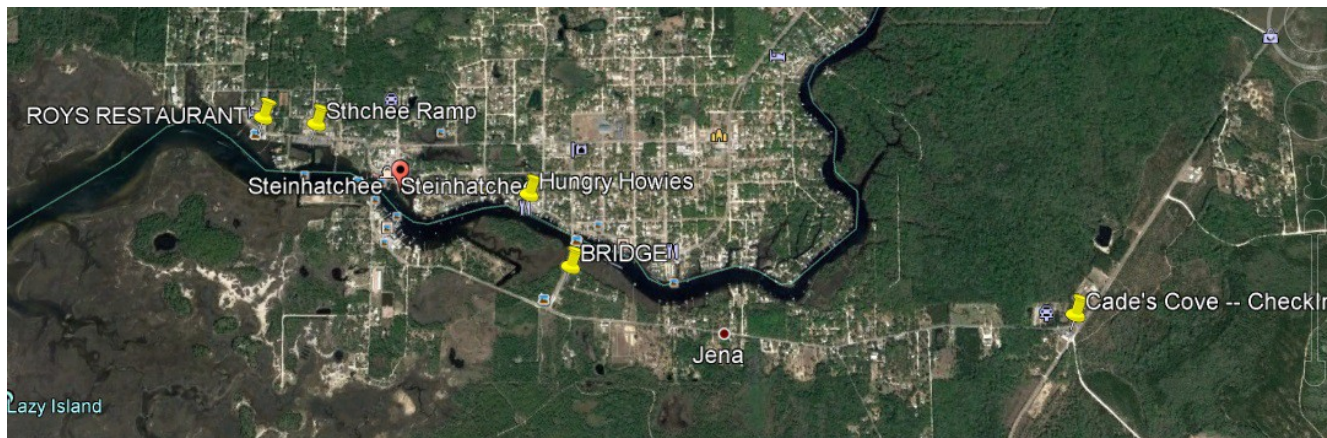


MAP OF STEINHATCHEE TOWN



**ICS 201 INCIDENT BRIEFING 1030 LOCAL TIME
INCIDENT: EXERCISE STEINHATCHEE STORM
MAPS & SKETCHES – PAGE 3**

Bird's eye view of Steinhatchee, Jenna and Cade's Cove checkin/staging point



ERROR: Check in listed as “Cade's Cove is actually named “CASEY'S COVE”

BRIDGE: if you are assigned to a radio post at the bridge SAFETY FIRST – large boats traverse this bridge. I suggest the Southwest shoulder of the bridge, beyond the rail so that you can get well OFF THE ROAD – then use 100 feet of shielded ethernet to position your microwave antenna as best as possible, but STILL WELL OUT OF THE WAY OF TRAFFIC

