

ALINCO

DR-599T / DR-599E

VHF/UHF FM
TWIN BAND MOBILE TRANSCEIVER



SPECIFICATIONS

DR-599T



DR-599E



General

Frequency coverage:

- DR-599T (U.S. Version)

144.000-147.995MHz (TX),

137.000-173.995MHz (RX),

440.000-449.995MHz (TX),

41 0.000-469.995MHz (RX)

- DR-599E (Europe Version)

144.000-145.9875MHz (TX & RX)

430.000-439.9875MHz (TX & RX)

Frequency Resolution:

5, 10, 12.5, 15, 20, and 25kHz steps

Antenna Impedance:

50 Ohms unbalance

Power Supply Requirement:

13.8 Volts D.C.

Current Drain at 13.8V

Receiving

Squelched : does not exceed 800mA

Transmitting

VHF High: 45W approx. 9.5A

Middle: 10W approx. 4.5A

Low: 5W approx. 3.5A

UHF High: 35W approx. 10A

Middle: 8W approx. 5A

Low: 4W approx. 4A

Dimension:

150mm(W) X 50mm(H) X 178mm(D)

(5-9/10") (2") (7")

Weight:

Approx. 1.5kgs (3.3lbs.)

Transmitter

Output Power:

VHF High: 45W

Middle: 10W

Low: 5W

UHF High: 35W

Middle: 8W

Low: 4W

Emission Mode:

F3E (FM)

Modulation System:

Variable Reactance F.M.

Max. Frequency Deviation:

±5kHz

Spurious Emission:

—60dB or under below carrier

Microphone:

Electret Condenser Microphone

Operating Mode:

Simplex

Duplex:

5kHz and 12.5kHz steps between 0 and 10.995MHz

from receive

frequency at 144-147.995MHz and 440-449.995MHz

DTMF Encoder:

Built-in (DR-599T only)

* Receiver

Receiving System:

Superheterodyne, Dual Conversion

Modulation Acceptance:

F3E (FM)

Intermediate Frequency:

1st 21.6MHz and 455kHz at VHF

1st 30.825MHz and 455kHz at UHF

Sensitivity:

12dB SINAD — 16dBμ

Selectivity:

±6kHz or under at — 8dB

±12kHz or under at — 60dB

Audio Power Output:

Approx. 2.5W

Speaker Impedance:

8 Ohms

* Accessories supplied as standard

-Hand Microphone (Condenser type)

a. 16 button DTMF Microphone (DR-599T)

b. Hand Microphone (DR-599E)

-Mobile Mounting Bracket

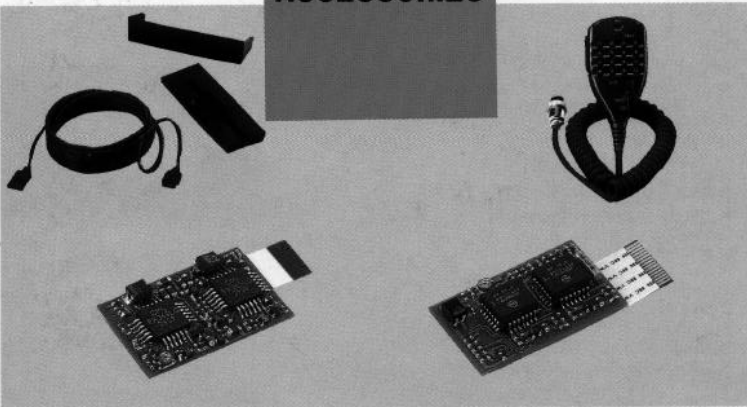
-Mounting Hardware

-D.C. Power Cable

MODEL CHART

| Type | DR-599T | DR-599E |
|-----------------|----------------------------------|----------|
| Tone Burst | Not Available | 1,750 Hz |
| Subaudible Tone | Encode Included, Decode Optional | Optional |
| DTMF | Encoder Included (16 Buttons) | Optional |

ACCESSORIES



- EDC-19
Separate Mounting Kit
with 3m (9ft. 10in.) Cable

- EDC-20
Separate Mounting Kit
with 5m (16ft. 5in.) Cable

- EJ-7U
Tone Squelch Unit
(for 2 bands)

*EMS-3

Remote Control Microphone
with DTMF keypad
(Standard for DR-599T)

*EMS-5

Hand Microphone
(Standard for DR-599E)

*EJ-8U

DTMF Unit
(for 2 bands)

Specifications subject to change without notice and are guaranteed for amateur band only.



ALINCO ELECTRONICS INC.

Head Office: "TWIN 21" MID Tower Building 23F, I-61, 2-Chome, Shiromi,
Chuo-ku, Osaka No.540 Japan

Factory: 1-1-1 Mishimae, Takatsuki, Osaka No.569, Japan

ALINCO ELECTRONICS INC.

438 Amapola Avenue, Unit130, Torrance, CA 90501, U.S.A.