

Plug-In

Frequency Mixer

TFM-150+

Level 10 (LO Power +10 dBm) 10 to 2000 MHz



CASE STYLE: B13
PRICE: \$49.70 ea. QTY (1-9)

+ RoHS compliant in accordance with EU Directive (2002/95/EC)

The +Suffix has been added in order to identify RoHS Compliance. See our web site for RoHS Compliance methodologies and qualifications.

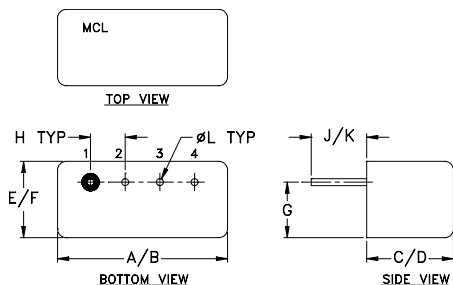
Maximum Ratings

Operating Temperature	-55°C to 100°C
Storage Temperature	-55°C to 100°C
RF Power	50mW
IF Current	40mA

Pin Connections

LO	1
RF	4
IF	2
GROUND	3
CASE GROUND	3

Outline Drawing



Outline Dimensions (inch/mm)

A	B	C	D	E	F
.480	.500	.390	.405	.210	.230
12.19	12.70	9.91	10.29	5.33	5.84
G	H	J	K	L	wt
.16	.100	.14	.20	.020	grams
4.06	2.54	3.56	5.08	0.51	2.3

Features

- low conversion loss, 6.19 dB typ.
- wideband, 10 to 2000 MHz
- rugged welded construction
- hermetically sealed

Applications

- satellite distribution
- cellular
- GPS
- ISM/GSM

Electrical Specifications

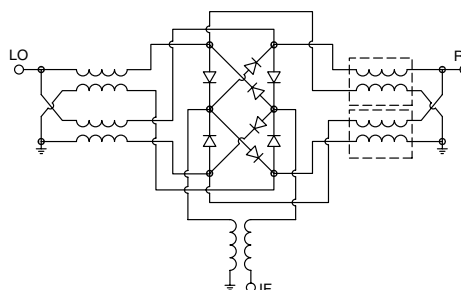
FREQUENCY (MHz)		CONVERSION LOSS (dB)				LO-RF ISOLATION (dB)						LO-IF ISOLATION (dB)					
LO/RF	IF	Mid-Band		Max.	Total Range Max.	L		M		U		L		M		U	
f_c-f_u		\bar{X}	σ			Typ.	Min.	Typ.	Min.	Typ.	Min.	Typ.	Min.	Typ.	Min.	Typ.	Min.
10-2000	DC-1000*	6.19	0.11	8.0	8.0*	32	25	35	25	35	25	33	20	30	20	30	20

1 dB COMP.: +5 dBm typ.
*Below 10 MHz IF, conversion loss increases up to 6 dB higher as frequency decreases to DC
L = low range [f_1 to $10 f_1$]
m = mid band [$2f_1$ to $f_1/2$]
M = mid range [$10 f_1$ to $f_1/2$]
U = upper range [$f_1/2$ to f_1]

Typical Performance Data

Frequency (MHz)		Conversion Loss (dB)	Isolation L-R (dB)	Isolation L-I (dB)	VSWR RF Port (:1)	VSWR LO Port (:1)
RF	LO	LO +10dBm	LO +10dBm	LO +10dBm	LO +10dBm	LO +10dBm
10.00	40.00	6.45	25.80	24.40	1.62	1.69
20.00	50.00	6.61	30.46	29.11	1.29	1.49
130.61	100.61	6.30	36.94	35.84	1.29	1.39
251.21	221.21	6.42	37.51	37.82	1.34	1.36
432.12	402.12	6.38	36.22	37.58	1.38	1.34
500.00	470.00	6.61	35.79	36.42	1.49	1.30
552.73	522.73	6.47	35.50	35.14	1.60	1.29
673.33	643.33	6.53	34.67	33.34	1.62	1.28
793.94	763.68	6.64	34.16	31.81	1.70	1.26
914.55	884.43	6.67	32.34	30.81	1.79	1.26
974.85	944.91	6.11	31.59	30.10	1.89	1.22
1035.20	1005.40	7.04	30.74	29.56	2.02	1.20
1155.80	1125.60	7.24	30.26	30.08	2.07	1.20
1276.40	1246.50	6.75	29.72	30.93	2.13	1.18
1397.00	1366.80	6.57	28.85	31.94	2.13	1.13
1517.60	1487.50	6.59	28.61	31.80	2.05	1.07
1638.20	1608.00	6.63	27.94	29.65	1.88	1.12
1758.80	1728.70	6.91	28.39	26.17	1.45	1.18
1879.40	1849.50	7.01	30.98	26.61	1.43	1.21
2000.00	1970.00	7.24	32.51	24.79	1.55	1.26

Electrical Schematic



Mini-Circuits®
ISO 9001 ISO 14001 CERTIFIED

ALL NEW
minicircuits.com

P.O. Box 350166, Brooklyn, New York 11235-0003 (718) 934-4500 Fax (718) 332-4661 For detailed performance specs & shopping online see Mini-Circuits web site



The Design Engineers Search Engine Provides ACTUAL Data Instantly From MINI-CIRCUITS At: www.minicircuits.com

RF/IF MICROWAVE COMPONENTS

REV. A
M98898
TFM-150+
DJ/TD/CP
061211
Page 1 of 2

