



***Future Directions for Government-Affiliated  
Disaster Amateur Radio Groups in Los Angeles County***

**Los Angeles County  
Disaster Communications Service**

**Deane Bouvier, N5DQ  
LACDCS Technical Officer**

**Since 1951 Los Angeles County DCS has evolved to support the County, its cities, and Sheriff's Dept.**

---



- **Established by County Ordinance, overseen by Los Angeles Sheriff's Dept. for County Chief Administrative Officer**
- **DCS role has evolved with governmental needs, changes in ham radio and technology = new directions since 2015**
- **Government-affiliated disaster amateur radio groups must always adapt to change: DCS is doing that**

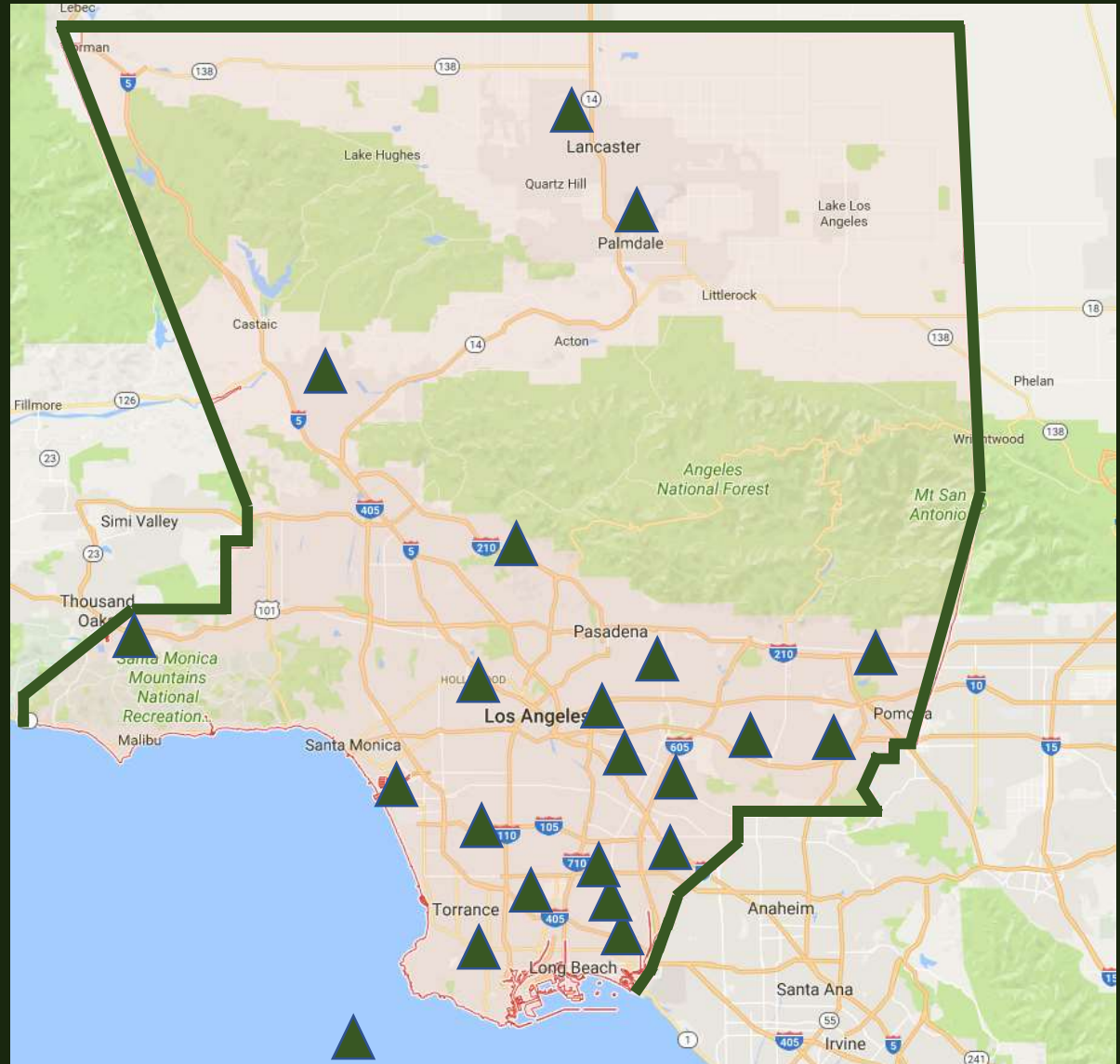
# DCS units operate from 21 Sheriff's Stations, LASD Communications Center, and County EOC



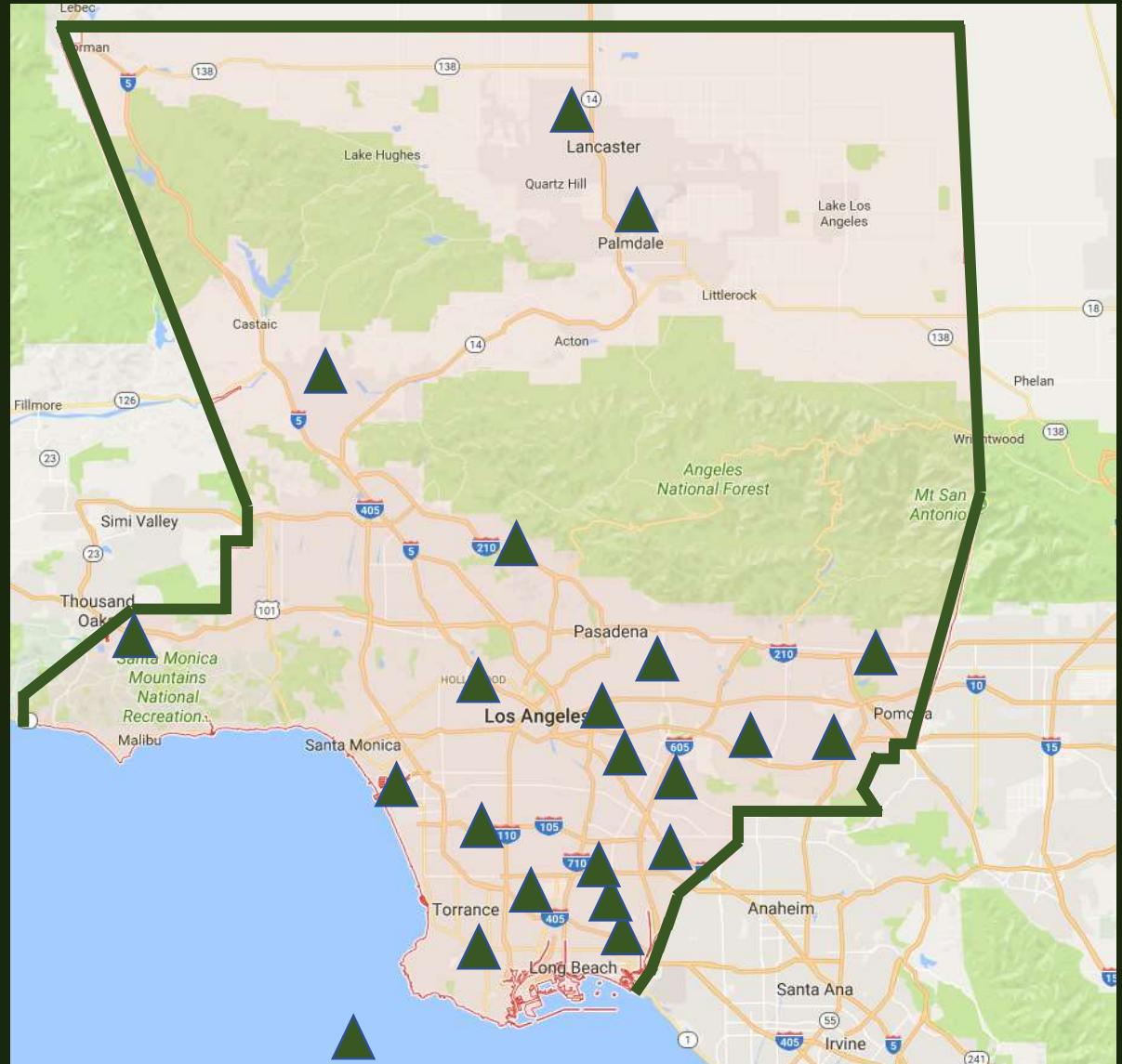
## Where DCS is:

### Sheriff Stations:

- |                    |                       |
|--------------------|-----------------------|
| ▪ East L.A.        | ▪ City of Industry    |
| ▪ South L.A.       | ▪ Pico Rivera         |
| ▪ Lomita           | ▪ Lost Hills          |
| ▪ Carson           | ▪ Santa Clarita       |
| ▪ Lakewood         | ▪ Palmdale            |
| ▪ Avalon           | ▪ Lancaster           |
| ▪ Norwalk          |                       |
| ▪ Century          | ▪ LASD Aero Bureau    |
| ▪ Marina del Rey   | ▪ L.A. County EOC     |
| ▪ West Hollywood   | ▪ LASD Comm. Center   |
| ▪ Crescenta Valley |                       |
| ▪ Temple City      | ▪ <i>Coming soon:</i> |
| ▪ San Dimas        | ▪ Altadena            |
| ▪ Walnut           |                       |



- **Back-up emergency communication:**
  - **Between City EOC's and County EOC**
  - **Between City EOC's and area Sheriff Stations**
- **Assist Sheriff's Department with communication assets for major disasters**





# DCS units operate from 21 Sheriff's Stations, LASD Communications Center, and County EOC



**We operate regularly at the Sheriff's Station level**

- **Communication test on Monday nights at each Sheriff's Station**
  - With County EOC
  - With City EOC's
  - With local DCS members
- **Assist local Sheriff's Station at area events**
- **Assist local cities and other public agencies as requested**



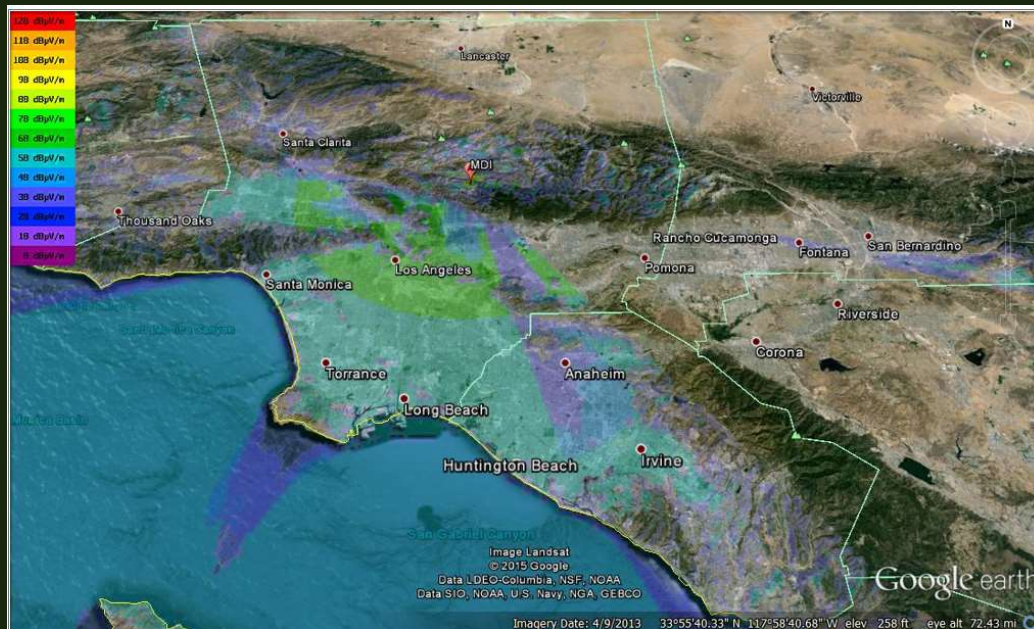
# To meet future disaster needs DCS has greatly increased its technical and training capabilities



## DCS Recent Technical and Training Evolution

- 2016-present: New six-site closed simulcast system for DCS provides superior coverage throughout L.A. County

Before: Mt. Disappointment repeater coverage



After: Six-site simulcast repeater coverage





# To meet future disaster needs DCS has greatly increased its technical and training capabilities



## DCS Recent Technical and Training Evolution

- 2015-present: DCS volunteers regularly work with Sheriff's mobile communications trucks and other assets



Interested DCS members have learned how to maintain or set up various LASD assets:

- MCU trucks
- Military-style antenna masts
- Satellite ground stations
- Other radio equipment

To meet future disaster needs DCS has greatly increased its technical and training capabilities



## DCS Recent Technical and Training Evolution

- 2015-present: DCS member training / operation of LASD military-type HF radios





# To meet future disaster needs DCS has greatly increased its technical and training capabilities



## DCS Recent Technical and Training Evolution

- 2015-present: DCS participation in multi-county emergency communication exercises



To meet future disaster needs DCS has greatly increased its technical and training capabilities



## DCS Recent Technical and Training Evolution

- 2015-present: All DCS rooms in Sheriff's Stations received new 2-meter, 220, 10 & 6 meter radios
- DCS Motorola CDM-1550 at all Sheriff's Stations programmed with every 2-meter LASD DCS District and City amateur group frequency



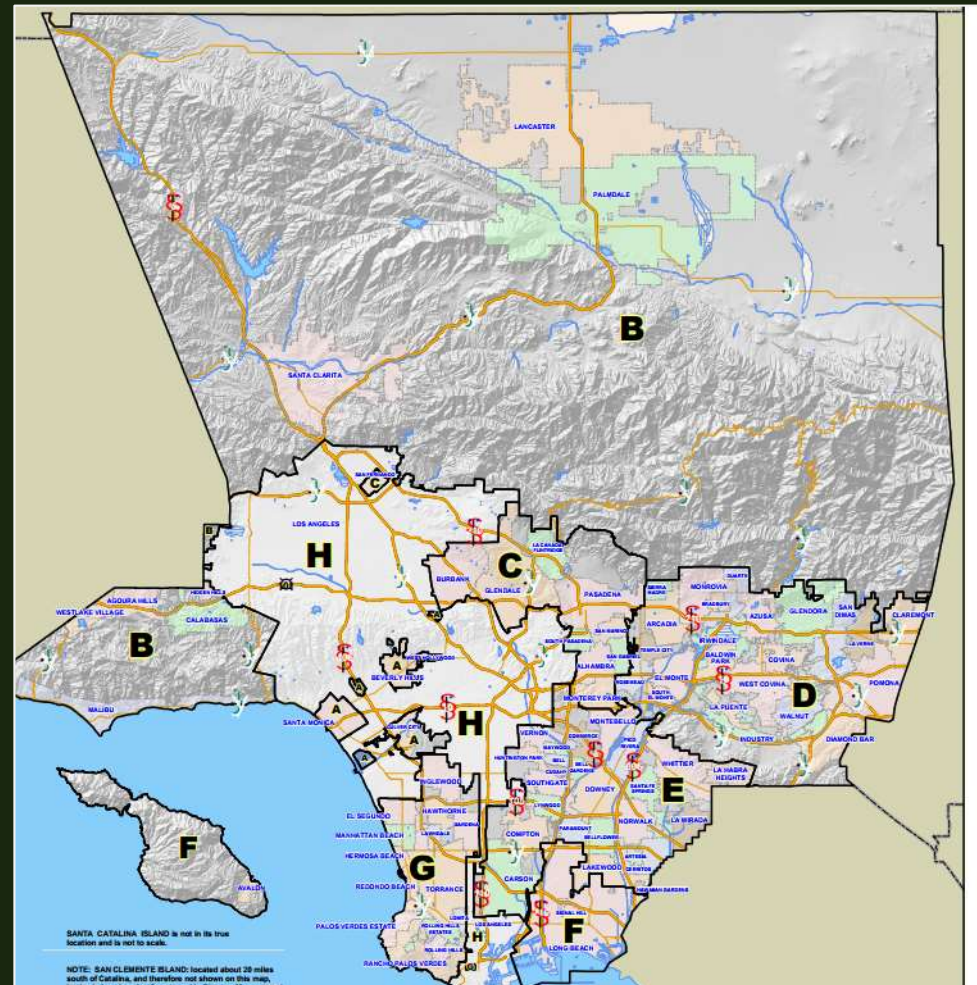


# To meet future disaster needs DCS has greatly increased its technical and training capabilities



## DCS Recent Technical and Training Evolution

- 2016-present: In conjunction with L.A. County DMACs, DCS compiled and deconflicted known frequencies of County and City disaster radio groups to ensure interoperability



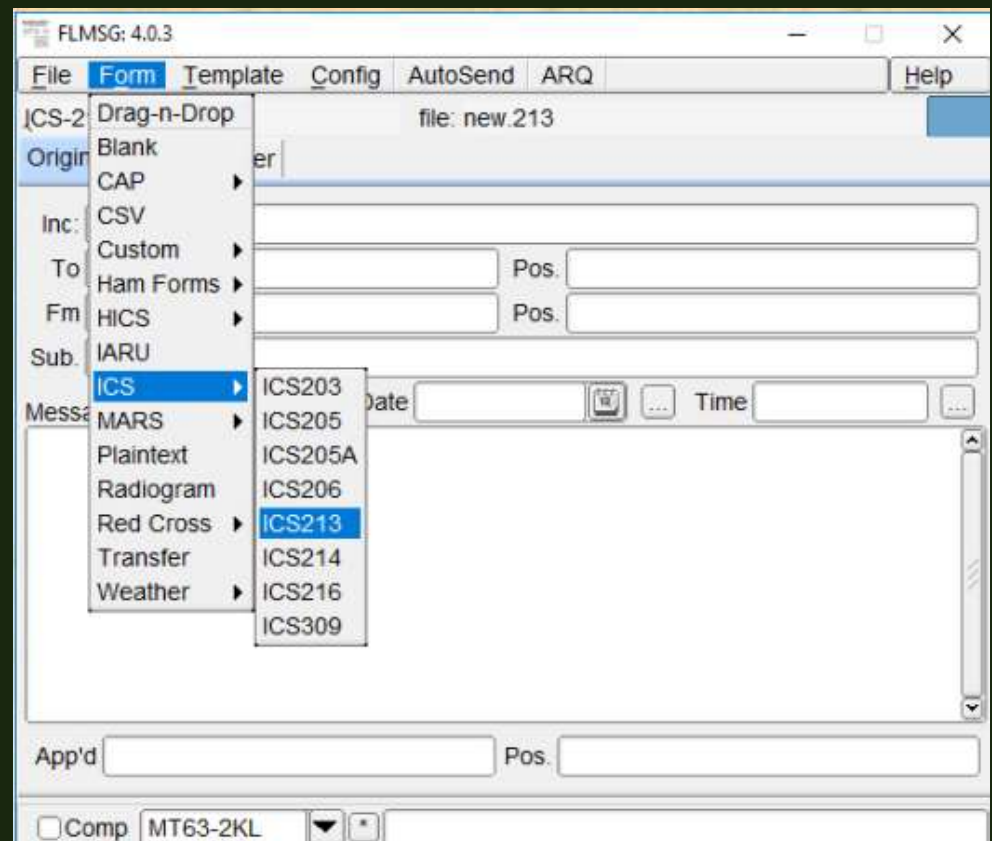


To meet future disaster needs DCS has greatly increased its technical and training capabilities



## DCS Recent Technical and Training Evolution

- 2014-present:  
Implemented NBEMS  
within DCS and with  
other disaster radio  
groups
- NBEMS works with any  
radio...free software for  
Windows, Mac, or Linux



# To meet future disaster needs DCS has greatly increased its technical and training capabilities



## DCS Recent Technical and Training Evolution

- 2015-present: Increased training opportunities provided to DCS members--Operating skills and technology to meet the future

Locally at Sheriff Stations



Quarterly training at County EOC



**If you are a licensed amateur who lives or works in Los Angeles County give DCS another look**

---



## **In summary...**

- **You've changed, we've changed**
- **DCS focusing on back-up disaster communication interfaces between cities and county EOC, from cities into area Sheriff stations, and between Sheriff stations**
- **Government-affiliated disaster amateur radio groups must adapt to change: DCS is doing that through technology and training**
- **Consider joining us for an exciting future**