



Los Angeles County Disaster Communications Service Presentation to Area G

Deane Bouvier, Staff 50
Technical Operations
16 June 2016



Los Angeles County Disaster Communications Service Is

- Volunteer organization of radio amateurs providing auxiliary communications to the County of Los Angeles in times of emergency
- Established in 1951 by LA County ordinance to provide disaster relief communications for the citizens of LA County
- Managed by the LA County Sheriff's Department on behalf of the County
 - Communications and Fleet Management Bureau (CFMB)
 - Also serves the Emergency Operations Bureau (EOB)
- When activated by appropriate authority, LA County DCS has California Disaster Service Worker coverage
- Recent change in Sheriff's Department management has made great improvements



DCS Mission

- Primary mission – Support emergency management at the county level when normal means of communication fail
 - Providing communications assets county wide and staffing to the County/Operational Area EOC, Sheriff's Stations and other county agencies
 - Interoperability with the city radio organizations and the Governor's Office of Emergency Services (OES) Auxiliary Communications Service for status and resource requests up and down the disaster response structure
- Secondary mission - Support mutual aid and augment the emergency communications needs of the cities
 - Support City EOCs
 - Field operations
- Conduct events and training to improve emergency communications skills





New Emphasis for DCS

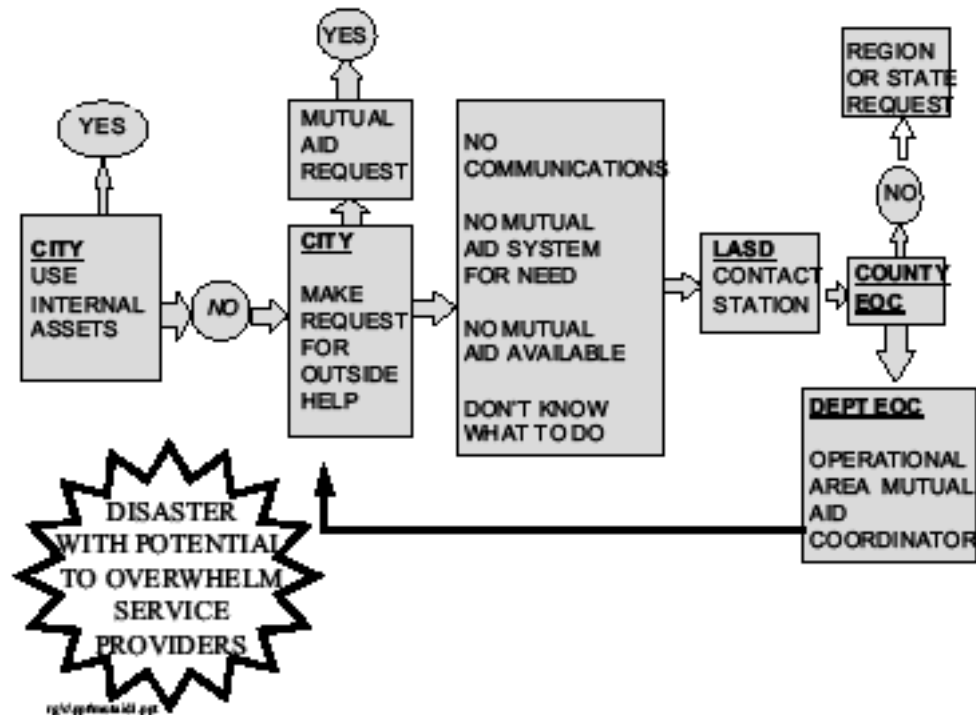
- LASD is serious about Disaster Communications
 - Including HF
- LASD is serious about DCS supporting the whole County
 - Other County agencies
 - Interoperability with the cities
- Management has revised policies
 - Recognition of past issues
 - Making new member process much more efficient
 - Engaging County employee hams in “hard to access” locations
- Established DCS Technical Team to address long standing hardware and frequency issues
- Established DCS Training Committee to improve training content and access to training
- Involving DCS with CFMB assets and drills





City Assistance Requests

- Disasters are managed at the lowest level possible
- When resources are overwhelmed cities seek mutual aid
- If mutual aid is not available due to
 - Lack of normal communications
 - Lack of an existing system
 - City has been so devastated that managers are not sure of what steps to take
- Request for Operational Area support will be made via the city's "contact" Sheriff Station
- If normal means of communication are down or overwhelmed, DCS is the backup mechanism using amateur radio

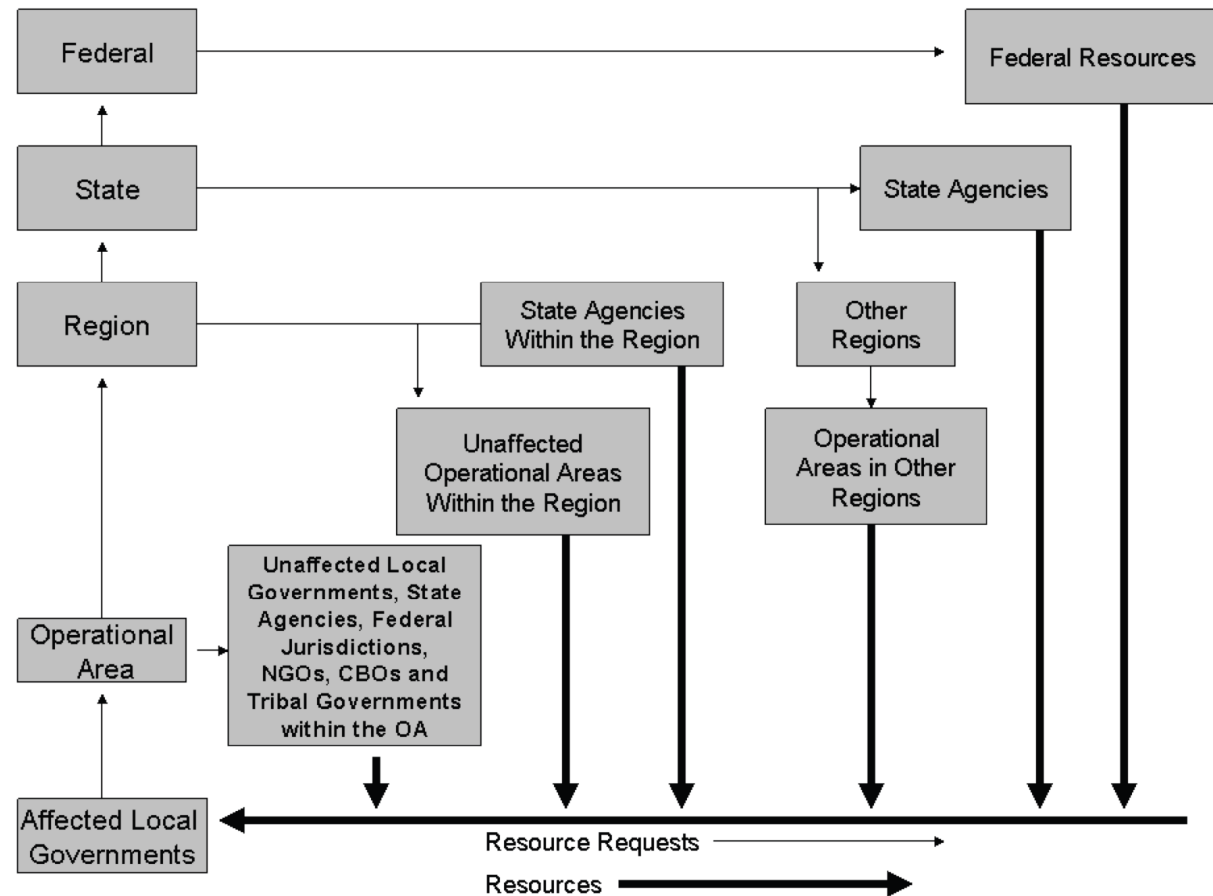


Source LA County Operational Area Emergency Response Plan



Mutual Aid Flow of Requests and Resources

- At each level when resources are overwhelmed, the mutual aid process continues
- Counties are the state's Operational Areas
- Once an Operational Area emergency is declared, the Sheriff is the Director of Emergency Operations
- When normal means of communication are unavailable, DCS is pressed into service both up and down the chain



Source State of California Emergency Plan



Cal OES Southern Region Covers 11 Counties

Cal OES Southern Region Mutual Aid Regions I and VI



- Area managed by Southern Regional EOC

Source State of California Emergency Plan



Digital Communications

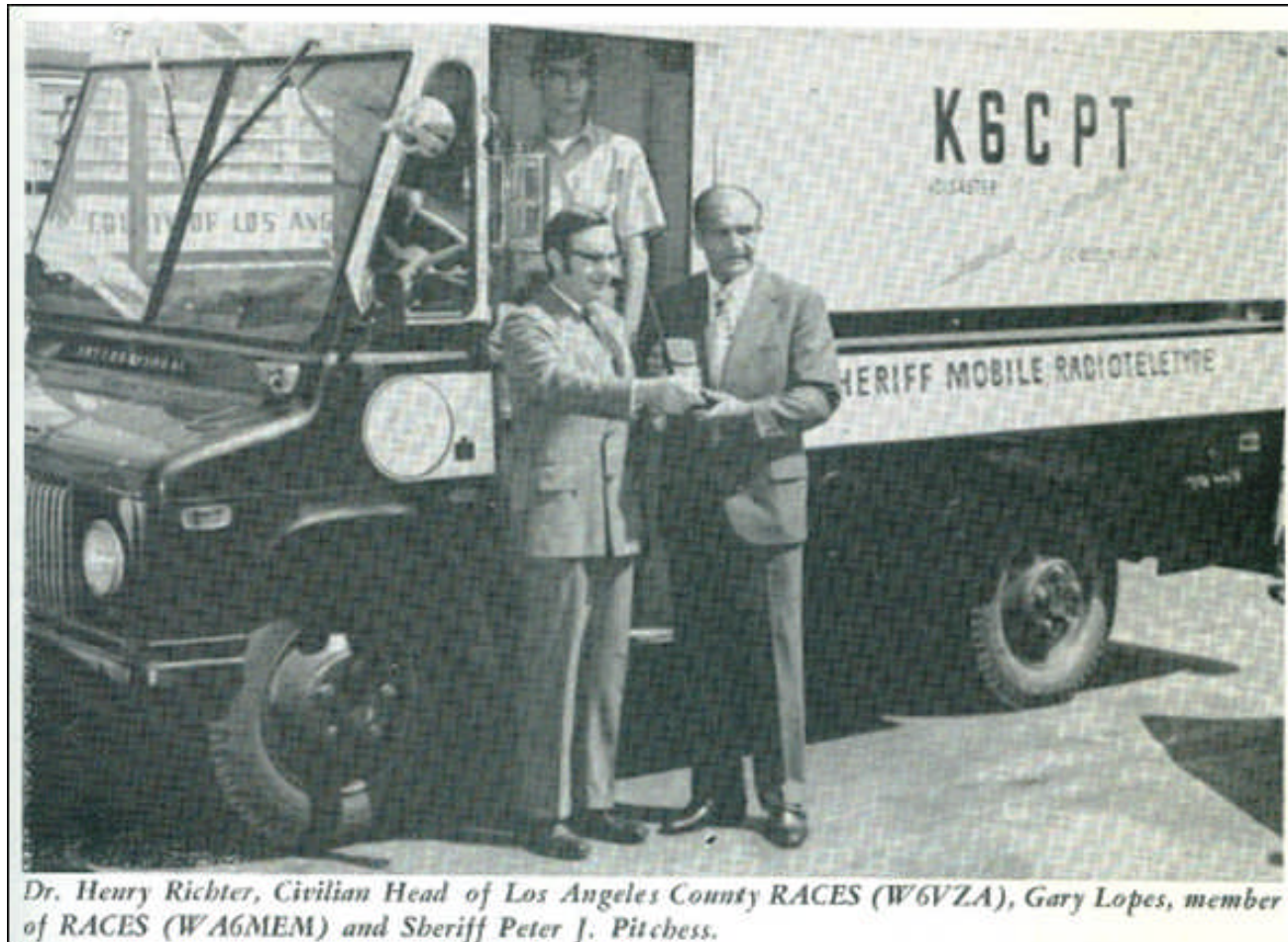
Narrowband Emergency Messaging System

- Some disaster response traffic is better suited for digital mode than voice.
 - Voice is too slow and error prone for long or involved messages
- NBEMS – a simple and easy way to send error-free digital messages
 - You don't have to buy an expensive modem or software
 - You don't even need a dedicated connection to your radio
- NBEMS produces messages on standard forms used in disaster management
 - Incident Command System (ICS)
 - Red Cross
 - ARRL Radiogram
 - Military Auxiliary Radio System
 - CSV spreadsheets
- NBEMS works with Windows, Linux and Mac computers and can be used on HF too; there is also an Android version





Digital is Not New



Dr. Henry Richter, Civilian Head of Los Angeles County RACES (W6VZA), Gary Lopes, member of RACES (WA6MEM) and Sheriff Peter J. Pitchess.



CFMB Mobile Communications Units

- Several deployable communications assets
- Most capable of desolate, off road operations
- Support
 - Interagency communications
 - Remote dispatch
 - Mobile repeaters
 - Satellite communications
 - HF communications
- Amateur radio equipment being installed
- DCS participates with the CFMB Technical Reserve Company in weekly maintenance and quarterly exercises
- MCU A made it to HAMCON 2015 at the Torrance Marriott





Frequency Plan Development

- Developing consistent frequency plan for districts to include contract/contact cities
 - Compliant with recognized band plans
 - Some districts isolated from their cities
 - Engage the city organizations where they exist via the DMACs
- Enable interoperability with other disaster radio groups
 - Red Cross
 - ARES
 - Orange County RACES
 - Cal OES Southern Region Auxiliary Communications Service
- Frequency plan will be shared with cities on a DMA basis
- Deploy common code plugs to the sheriff station radios
- Then we practice
- That way we can talk to each other when we need to!

South LA & Lomita District Frequency Plan

South Los Angeles & Lomita Disaster Communications Service							For Official Use Only
WGLMT Frequency Plan							05/30/2016
Do not refer to frequencies on the air. Use only the frequency designators.							Changes noted in red
Freq. Designator	Freq.	Call / Info.	Tx Offset	PL-Tx	PL-Rx	Agency	Notes
DCS Primary	147.270	KeCPT	+ 0.600	179.8			"Closed" WAS2TR 6-site Simulcast System
DCS Mt D	145.300		- 0.600	100.0			KeCPT Mt. Disappointment
DCS EOB Repeater	145.300		- 0.600	156.7	100.0	L.A. County EOC	Out of Service
DCS 220	224.300		- 1.600	100.0		Sherriff's CFMB	KeCPT Mt. Disappointment
DCS 6m	51.500		Simplex				
DCS 10m	29.500		Simplex				
District 3 & 17 2m Primary	145.320	WGLMT	- 0.600	114.8	114.8	South Los Angeles Station 3 & Lomita Station 17	WetRW Amateur Radio Club
District 3 & 17 EOC Link	223.440		Simplex	156.7	156.7		District to City EOCs
District 3 & 17 UHF Primary	445.300		- 5.000	127.3	127.3		KEBH Rolling Hills AHC crosslinked to WetRW 2m
District 3 & 17 PV West	449.980		- 5.000	173.8	173.8		KeiUM MTA Radio Club
District 3 & 17 Tac 1	145.580		Simplex	156.7	156.7		
District 3 & 17 Tac 2	146.030		Simplex	156.7	156.7		
District 3 & 17 Tac 3	145.600		Simplex	156.7	156.7		
District 3 & 17 UHF Tac 4	446.520		Simplex	156.7	156.7		
Station 17A Primary	Reserved	WePVE	- input 145.740	131.8	131.8	Lomita City EOC	
Station 17B North	146.500		+ input 146.500	131.8	131.8	Palos Verdes Estates EOC (NART)	
Station 17B South	145.740		- 5.000	131.8	131.8		WePVE Bay View Repeater
Station 17C Primary 440	447.800	NeRPV	- 5.000	100.0	100.0		KeRPV Palos Verdes Radio Club
Station 17C San Pedro Hill	447.120		- 5.000	192.8	192.8	Rancho Palos Verdes EOC (PVAN)	NeRPV SP Hill Cal Water Site (East Side)
Station 17C Primary 2m	146.580		Simplex	156.7	156.7		Shared with Station 17F and PVAN
Station 17C Tactical 2m	146.590	KeRPD	Simplex	156.7			
Station 17D Primary	446.860		- 5.000	192.8	192.8	Radondo Beach EOC	KeRUH operating on a test pair for special events pending coordinated frequency
Station 17E Primary	Reserved	WeTPD	Simplex	156.7	156.7	Radondo Beach CERT Command Vehicle	
Station 17F Primary	146.580		- 1.600	100.0	100.0	Rolling Hills EOC	RH Community Assn 151.775, DPL 245
Station 17G Primary	223.880		- 5.000	131.8	131.8	Rolling Hills Estates EOC	Shared with Station 17C and PVAN
Station 17G 440 Alternate	446.020	NeLCM	- 5.000	141.3	141.3	Torrance EOC	KeTPD
Station 17G 90501/2	223.400		Simplex	141.3	141.3	(Torrance Amateur Radio Association)	KeBFS
Station 17G 90503	223.520		Simplex	141.3	141.3	Torrance 90501 & 90502 Area Disaster Centers	Alternato 222.160, Tertiary 145.555 all TSO 141.3
Station 17G 90504	223.460	NeLSPH	Simplex	141.3	141.3	Torrance 90503 Area Disaster Center	Alternato 222.180, Tertiary 144.405 all TSO 141.3
Station 17G 90505	223.420		Simplex	141.3	141.3	Torrance 90504 Area Disaster Center	Alternato 223.480, Tertiary 144.420 all TSO 141.3
Station 17G 90506	223.360		Simplex	141.3	141.3	Torrance 90505 Area Disaster Center	Alternato 222.120, Tertiary 144.435 all TSO 141.3
PVP USD Primary	224.360	NeLCM	- 1.600	192.8	192.8	Torrance 90506 Area Disaster Center	WESBA South Bay Amateur Radio Club
PVP USD Alternate	222.120		Simplex			Palos Verdes Peninsula School EOC	
LCMFA1	144.460		Simplex	123.0	123.0		
LCMFA2	144.430	WeSPH	Simplex	123.0	123.0	Providence Little Company of Mary	
LCMFA3	222.140		Simplex	123.0	123.0	Medical Centers	
LCMFA6	446.020		Simplex	123.0	123.0	LCM Radio Amateurs	Torrance, San Pedro & Interfacility
Station 3A El Segundo	445.240	WBVMV	- 5.000	88.5	88.5	El Segundo EOC	El Segundo Amateur Radio Group (RACES)
Station 3C Hermosa Primary	448.800	KeHBC	- 5.000	118.8	118.8	Hermosa Beach EOC	
Station 3G Gardena DCS	461.700	WQJKE3	+ 5.000	136.5	136.5	Hermosa Beach Amateur Radio Association	Palm Tree Repeater
Area G Mutual Aid	457.825	WQJKE3	Simplex	D032	D032	Gardena Disaster Communications Service	
Mutual Aid Frequency for All Area G Cities							



Area G

14 Cities with 2 Contact Sheriff Stations

City	Contact Sheriff Station	City	Contact Sheriff Station
El Segundo	South Los Angeles	Manhattan Beach	South Los Angeles
Gardena	South Los Angeles	Palos Verdes Estates	Lomita
Hawthorne	South Los Angeles	Rancho Palos Verdes	Lomita
Hermosa Beach	South Los Angeles	Redondo Beach	Lomita
Inglewood	South Los Angeles	Rolling Hills	Lomita
Lawndale	South Los Angeles	Rolling Hills Estates	Lomita
Lomita	Lomita	Torrance	Lomita

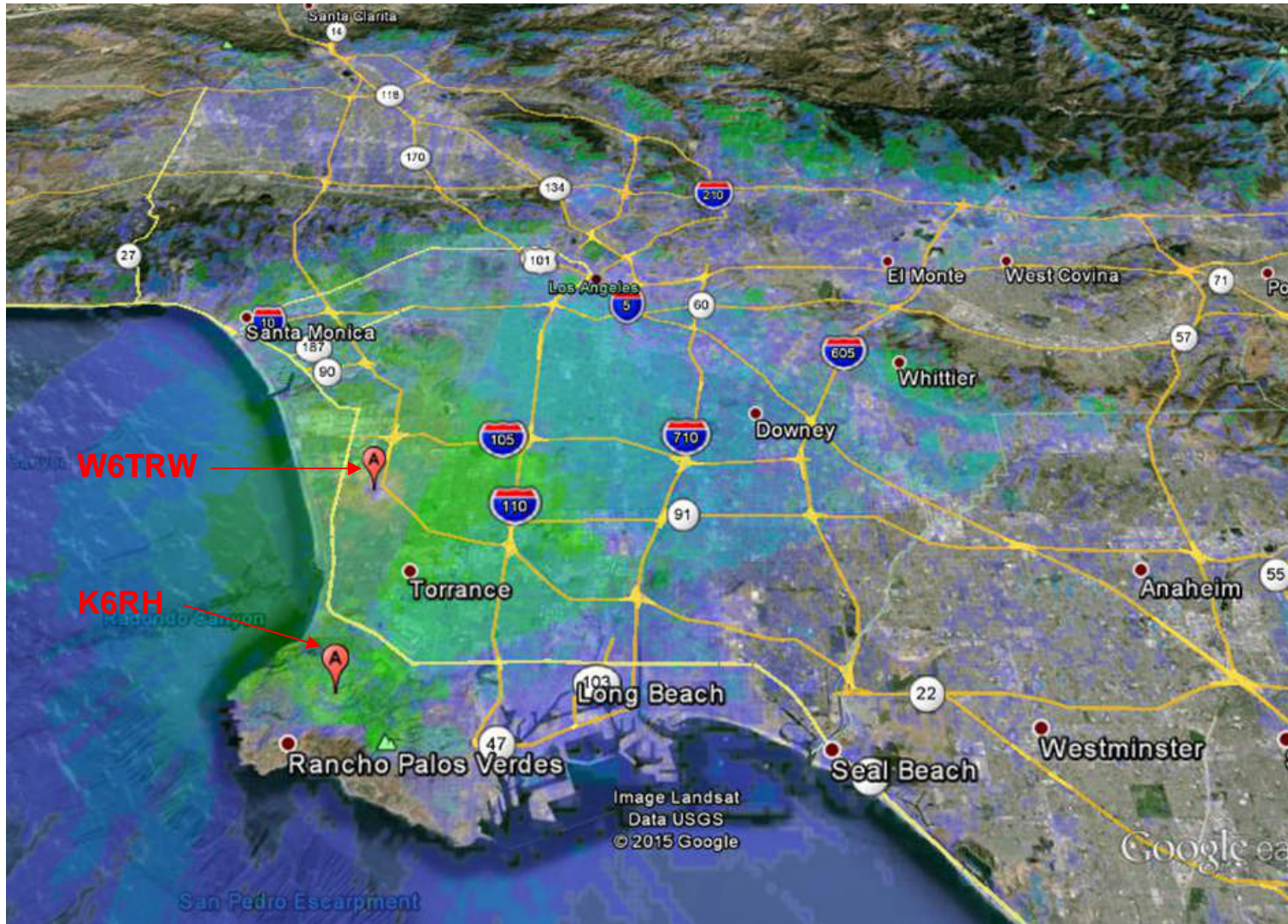
- Lomita and South Los Angeles DCS Districts have been combined under the one leadership
- Provides consistency to share operator and frequency resources
- Our weekly nets include the city radio organizations and CERT groups serving the Area G cities



Repeaters We Use Linked District Coverage

Linking 2
repeaters
provides
good
coverage
over most
of Area G

We are
exploring
options for
improving
coverage
to help the
back of
PV





Our Request

- For cities that have support amateur radio organizations DCS needs the contact information for the lead person.
- We can then coordinate frequencies and publish a consistent plan that will enable cities to talk to their contract/contact sheriff station and vice versa.
- Please provide the following to N5DQ@ARRL.net

City Name	
City Amateur Radio Organization	
Lead Amateur Radio Person	
Lead Person's e-mail	
Lead Person's phone	

- If your city does not have an amateur radio organization supporting it, please confirm that too



This is What We Think We Know

- Please confirm this information, provide corrections and/or help fill in the blanks
- We encourage participation by all city amateur radio groups in our weekly nets and drills
- You can also contact us via the South Los Angeles and Lomita District web site W6LMT.net

AREA G	City Amateur Radio Contact
EL SEGUNDO	
GARDENA	Stuart Gorsky [T-61]
HAWTHORNE	
HERMOSA BEACH	Ken Hartley
INGLEWOOD	
LAWNDALE	
LOMITA	Bob Gorman [T-95]
MANHATTAN BEACH	Paul Curry
PALOS VERDES ESTATES	Bob Sylvest [NART01]
RANCHO PALOS VERDES	Dale Hanks [T-57]
REDONDO BEACH	Ken Carr
ROLLING HILLS	
ROLLING HILLS ESTATES	Jim Johnson [T-14]
TORRANCE	Chuck Galbasin [T-139]