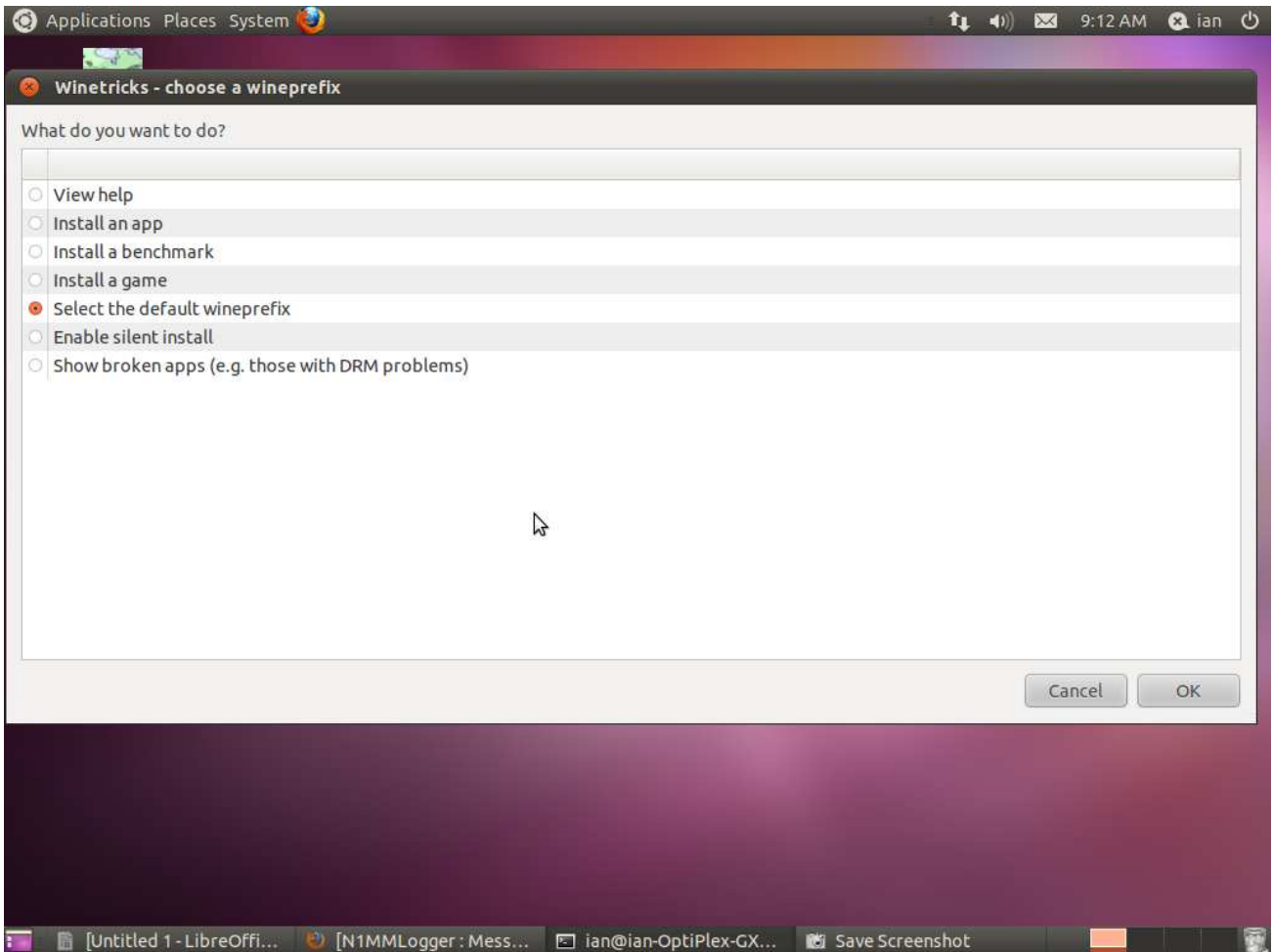


Installing N1MM Logger Under Linux Using WINE

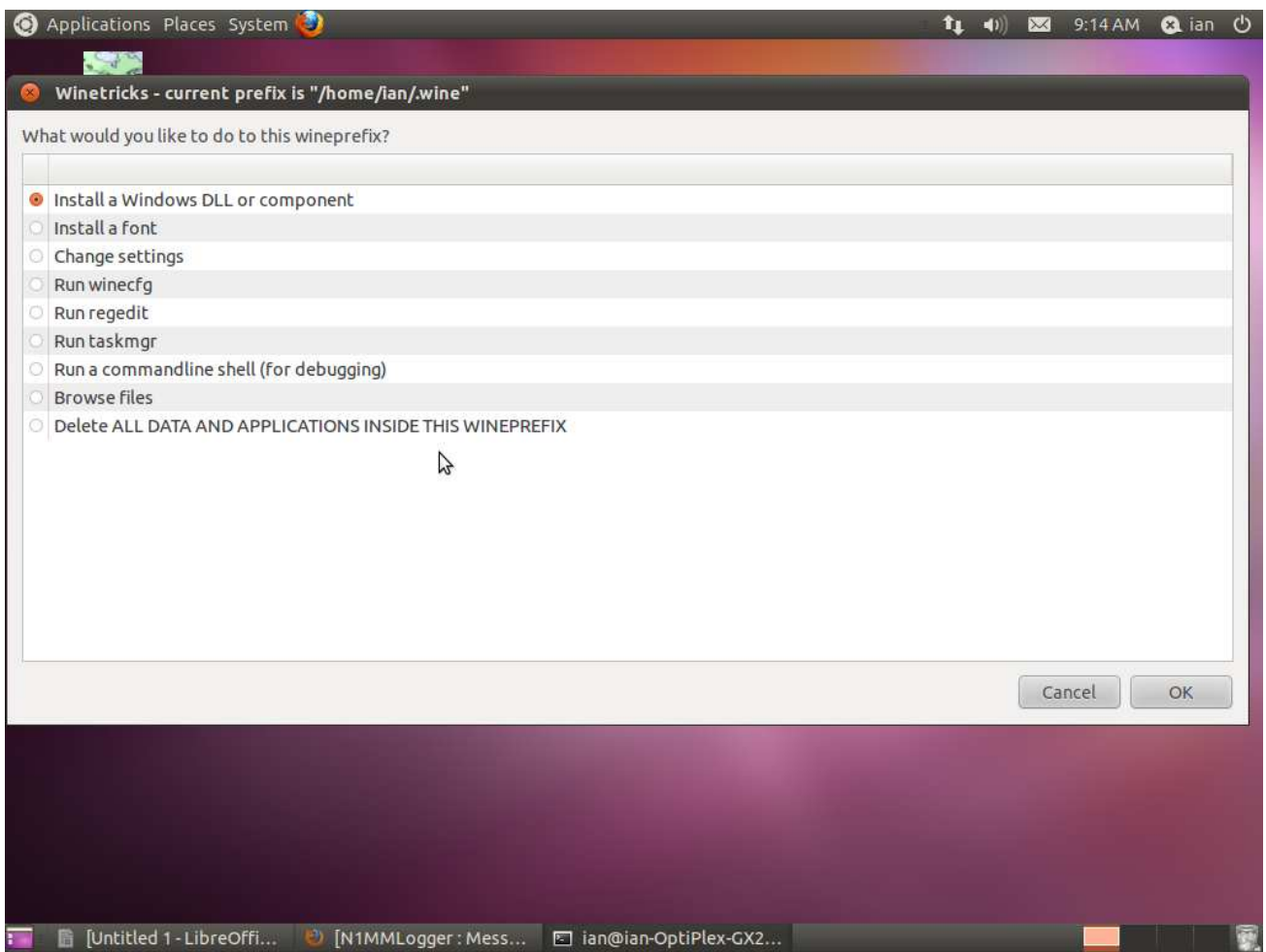
Written by Ian Kahn (KM4IK)

1. Install the latest version of WINE from your distribution's repository. The current version under Ubuntu 11.04 is 1.3.15. According to <http://www.winehq.org>, 1.3.31 is in development.
2. Once WINE is installed, open a terminal and enter the following commands:
 1. `sudo wget http://www.kegel.com/wine/winetricks`
 2. `sh winetricks`
3. The second command, above, opens winetricks to the following window:

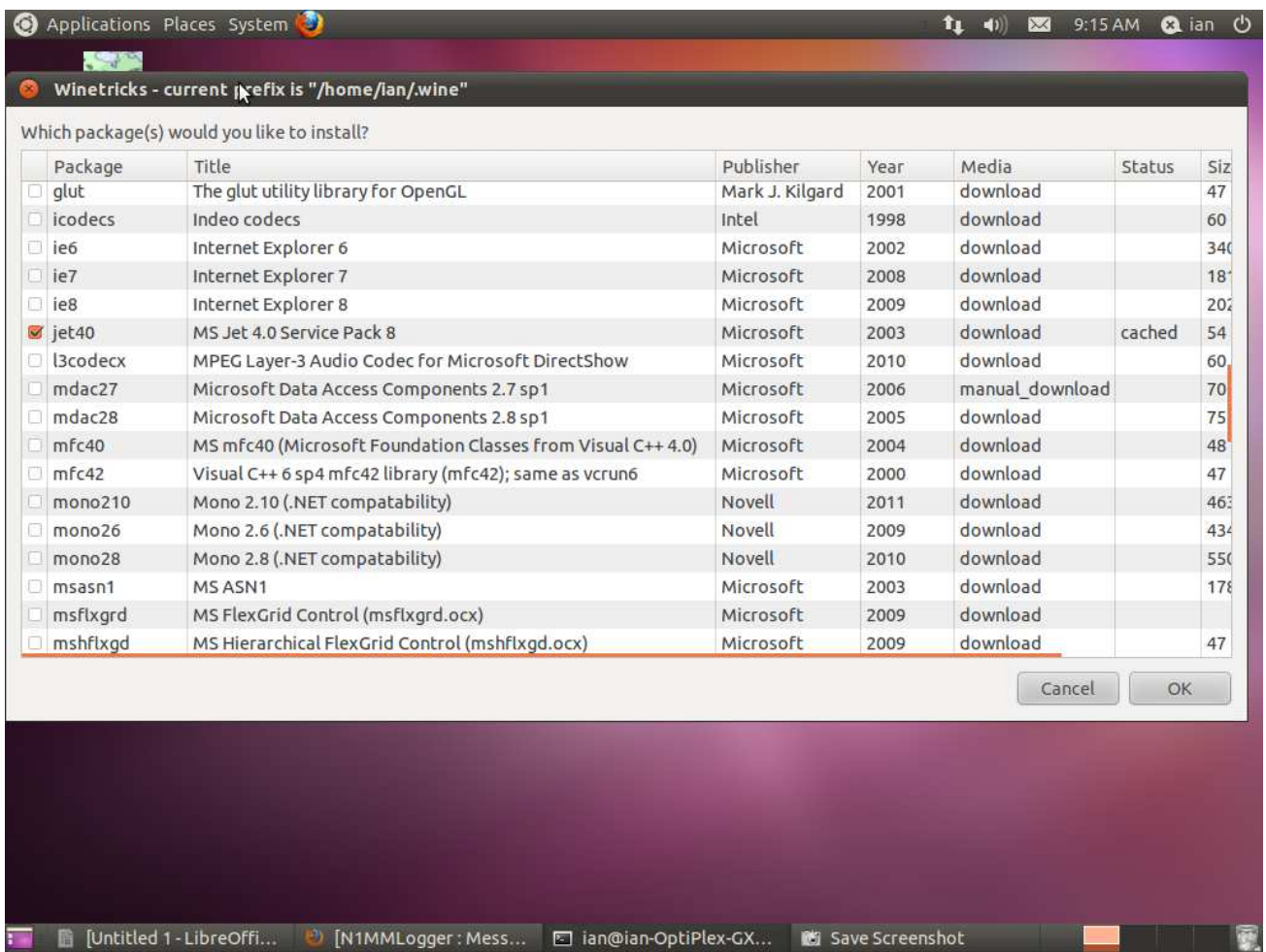


Accept the default value and click “OK”

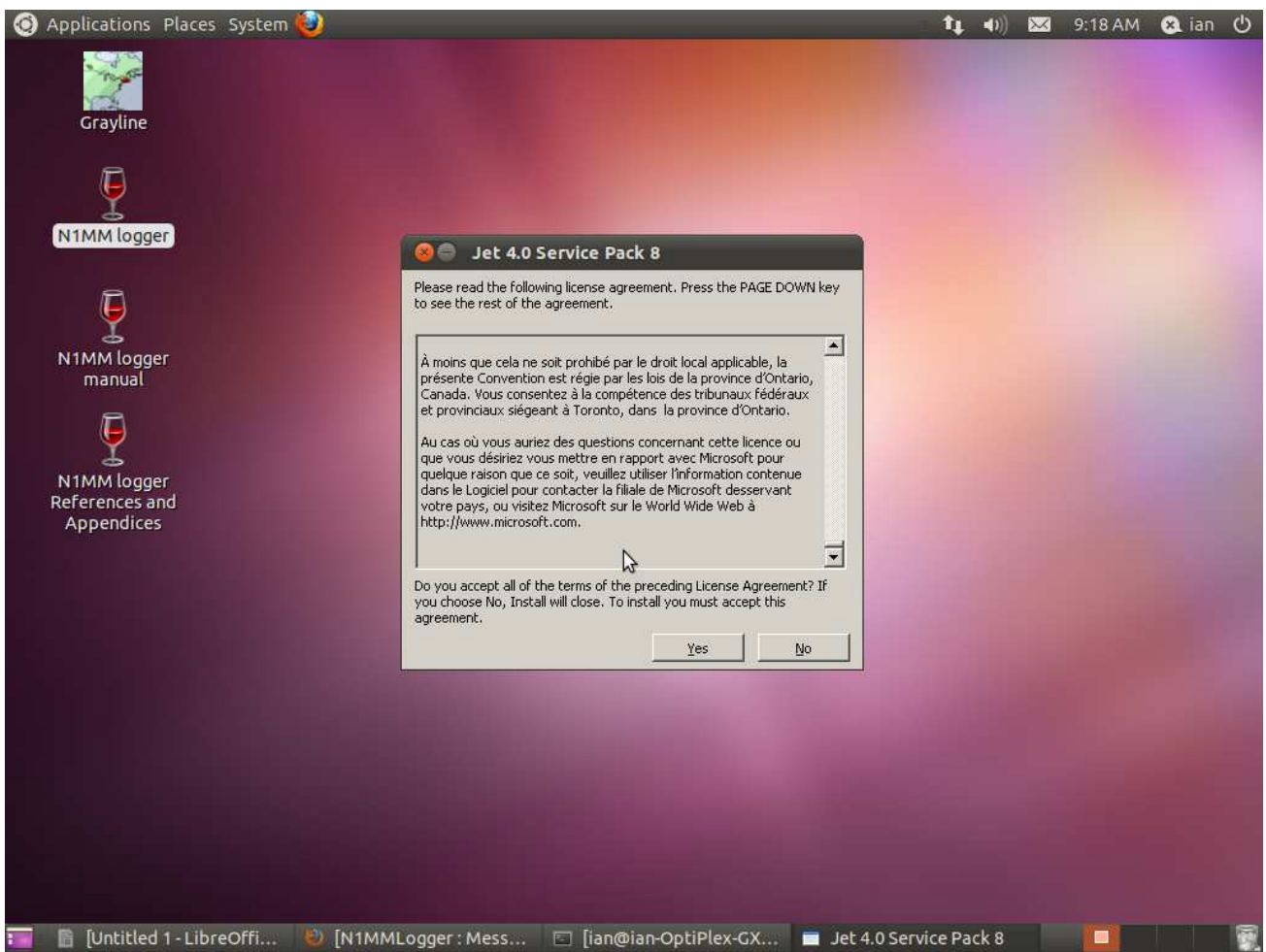
4. In the next screen, select “Install a Windows DLL or component” and click “OK”.



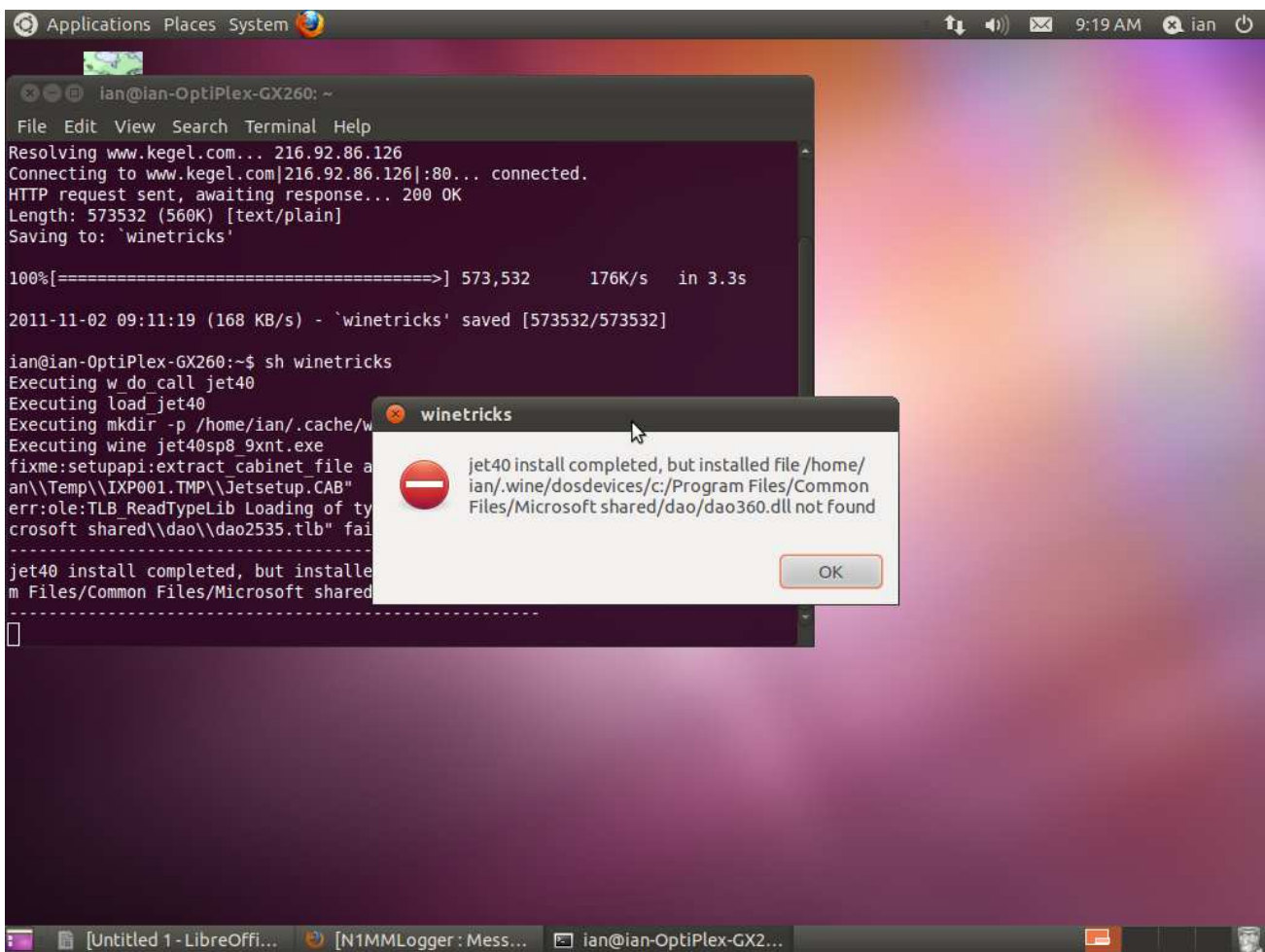
5. In the next screen, scroll until you find, and select, “jet40” and click “OK”.



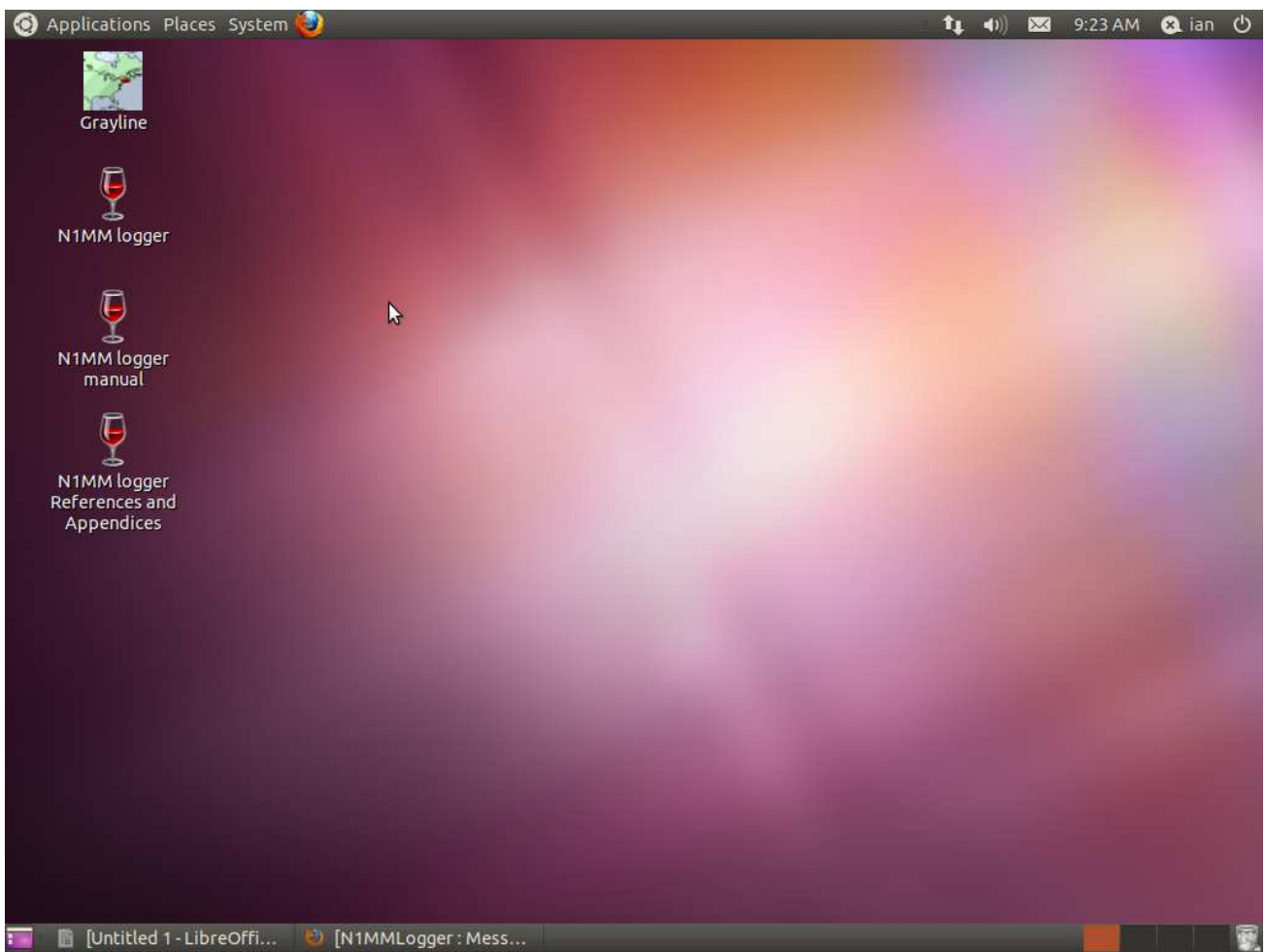
6. In the “Jet 4.0 SP8” dialog, click “Yes” to begin the installation.



7. You might receive an error, such as the following, when the installation completes. I simply clicked “OK” to accept and dismiss the error. It doesn't seem to have affected my WINE or N1MM installations.



8. At this point, browse to the N1MM web site, <http://www.n1mm.com>. Download the latest full installer **and** the latest updates package. You will need both for your installation.
9. Open a terminal window in the folder where you downloaded the files in step 8, above. Run the N1MM full installer by typing "wine <installfilename>". This will run the N1MM installer as if you were running it under Windows. Follow the steps/instructions listed. Reboot.
10. Once the full installer completes and you reboot, open a terminal into the folder where you downloaded the N1MM installation files and enter "wine <latestupdateifile>". The updates will run.
11. Once all this is complete, you will have several WINE/N1MM icons on your desktop:



Double-click on the N1MM Logger icon, and the application will launch. You will need to go to Config → Change your station data, to enter your correct station info.

Note – The first time you run N1MM, it will take a while for the application to load and start running. Please be patient. It will load more quickly on subsequent use.