

Figure 2. A Tantalum Fuse. The fusing device used for protection of other components in case of failure due to overload. The tantalum fuse, like other FETRON circuit elements, is made by well-established integrated circuit methods.

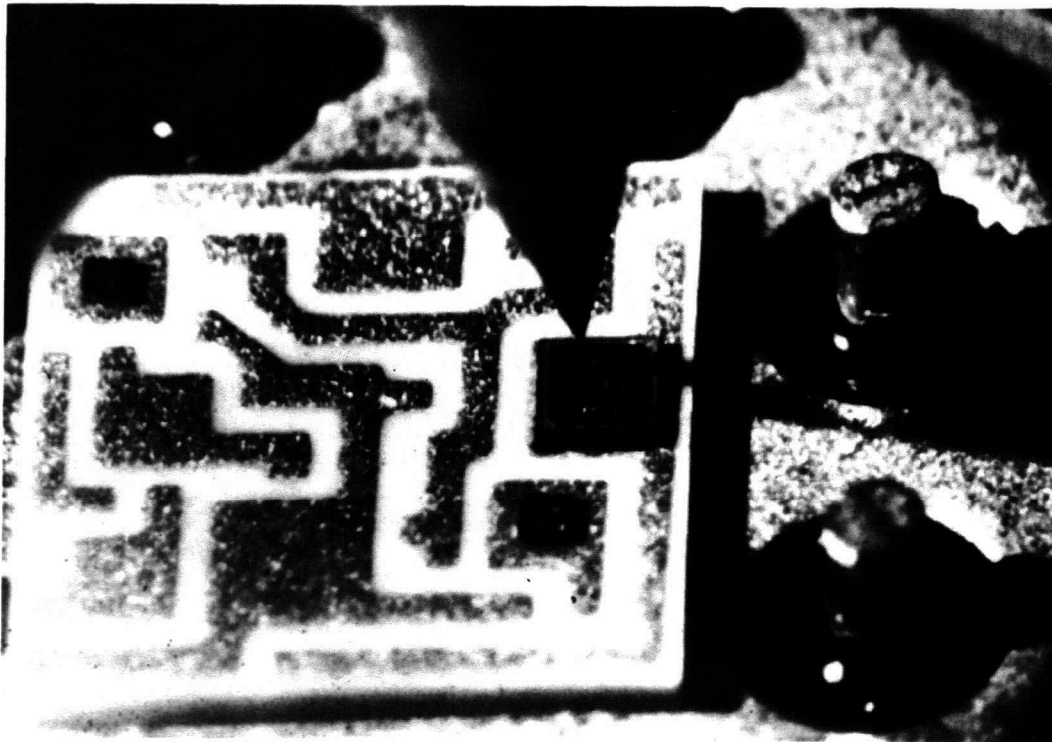


Figure 3. FETRON Circuit Assembly. FETRONs are assembled on a thick film substrate by well-established hybrid circuit methods. After bonding to the header, gold wires are connected from its pads to posts which extend through the header as pins for the vacuum tube socket.