

THE WELLINGTON RADIO CLUB NORMALLY MEETS AT THE WELLINGTON EMERGENCY OPERATIONS CENTER. It is located in the Public Works complex on Pierson Road just west of South Shore Blvd. Refer to Map B if you live outside Wellington and Map C for within Wellington.

REFER TO MAP B:

If you are traveling on I-95 from the North,
cross over to the Florida Turnpike at the Indiantown Road, Jupiter exit.
Take the Turnpike South to the Southern Blvd exit.
At traffic light, turn **LEFT** (south) and go to the next light.
Make **RIGHT** onto Southern Blvd (80/98), west.
Make **LEFT** at SR7/441, south.
Make **RIGHT** onto Forest Hill Blvd.
Follow directions **FROM FOREST HILL & SR7**

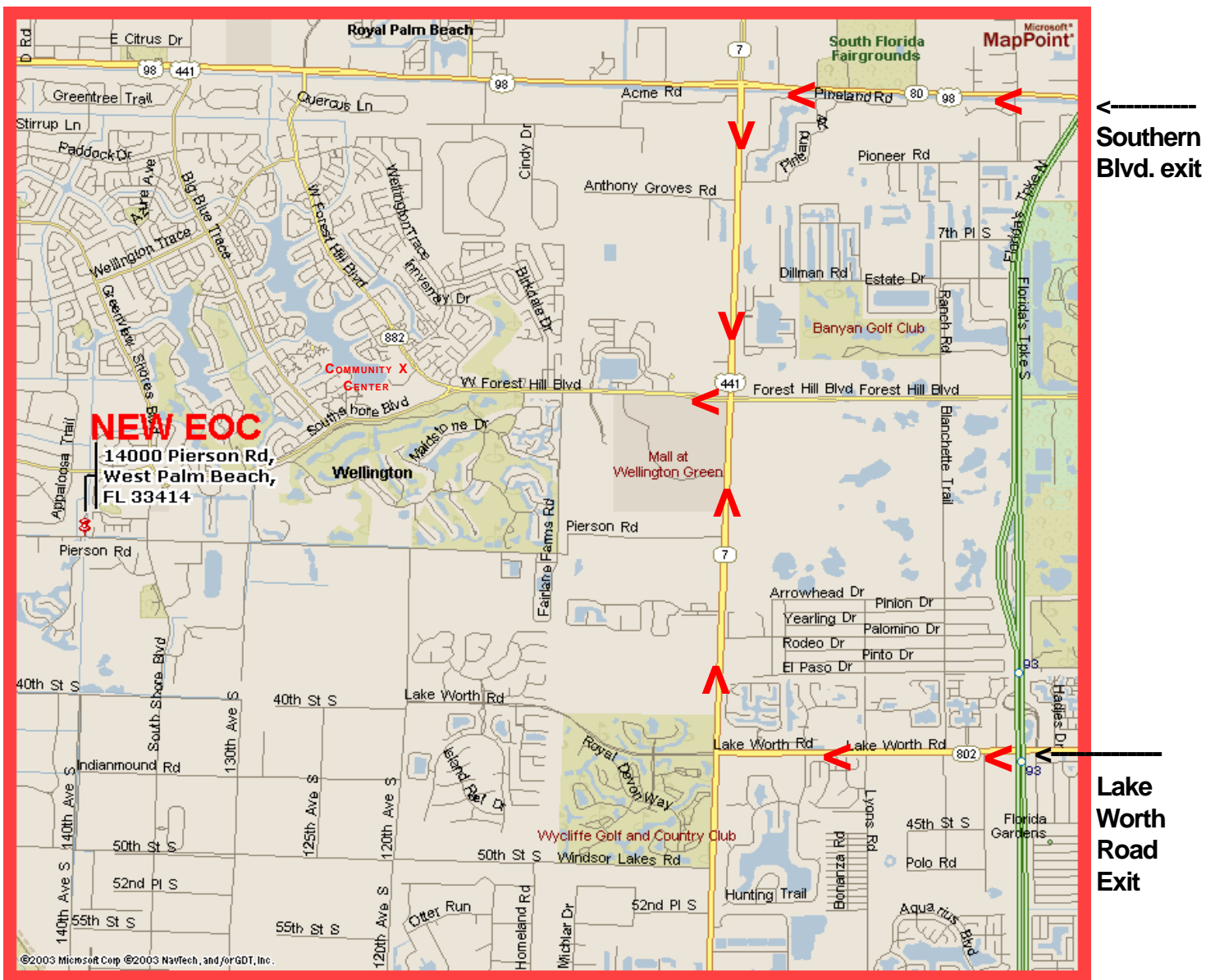
If you travel the Turnpike from the NORTH,
Take the Turnpike **SOUTH** to the Southern Blvd exit.
At traffic light, turn **LEFT** (south) and go to the next light.
Make **RIGHT** onto Southern Blvd (80/98), west.
Make **LEFT** at SR7/441, south.
Make **RIGHT** onto Forest Hill Blvd.
Follow directions **FROM FOREST HILL & SR7**

If you travel the Turnpike from the SOUTH,
Take the Turnpike **NORTH** to the Lake Worth Road exit.
Once past the toll gate, bear **RIGHT** onto Lake Worth Road, go west about 2 miles.
At traffic light, turn **RIGHT** onto SR7/441 north about 2.3 miles.
At the second traffic light, make **LEFT** onto Forest hill Blvd.
Follow directions **FROM FOREST HILL & SR7**

FROM FOREST HILL & SR7 (Refer to Map C)

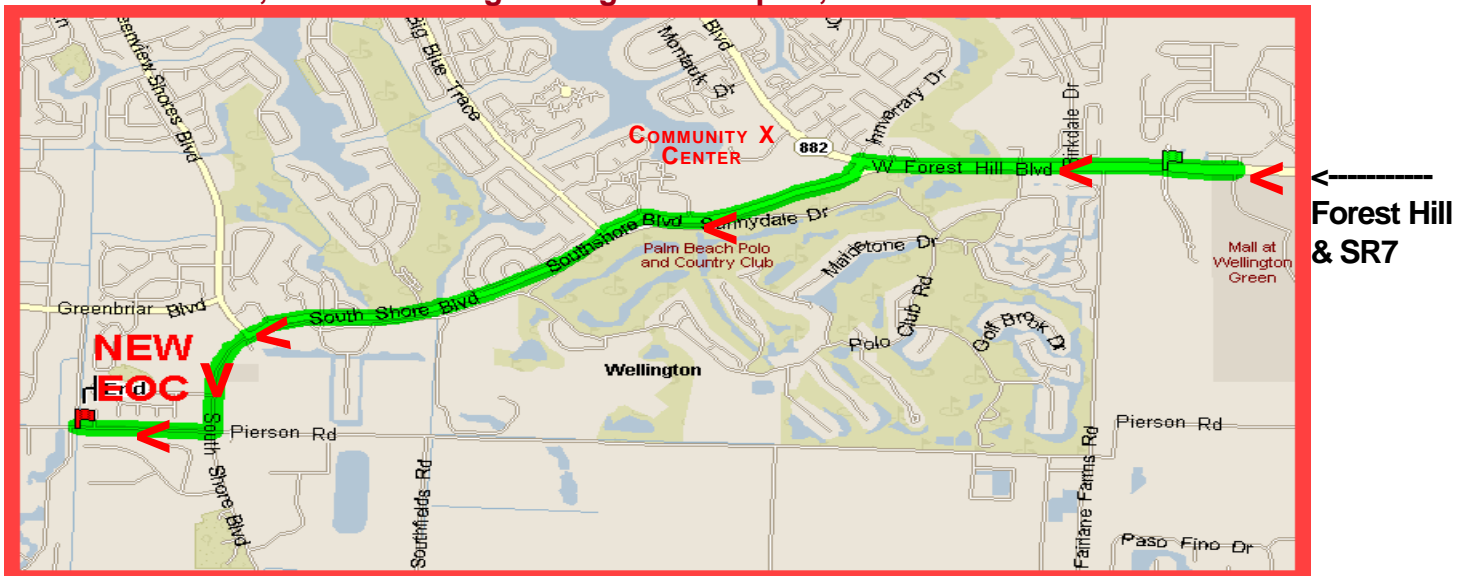
Keep **STRAIGHT** on W Forest Hill Blvd., (SR-882) about 1.8 miles.
(If you pass Publix on the left, you have gone too far.)
Make **LEFT** onto **SOUTHSHORE** Blvd, about 2 miles.
(The Polo Stadium will be on left as you approach Pierson).
Turn **RIGHT** (West) onto **PIERSON** Rd., about 0.4 miles.
Look for sign: **VILLAGE OF WELLINGTON, ENGINEERING/PUBLIC WORKS.**
Make **RIGHT** into drive & parking lot.





MAP B - ROUTES FROM TURNPIKE TO FOREST HILL BLVD. & SR7.

The Southern Blvd Turnpike exit would be at top right of map and the Lake Worth exit is at the bottom right. At the intersection of Forest Hill & SR7 is the Mall at Wellington Green, southwest corner, and the Wellington Regional Hospital, northwest corner.



MAP C - ROUTE FROM FOREST HILL & SR7 TO THE EOC ON PIERSON ROAD