

Quantar Mixed-Mode With External Analog Controller				
				CAT-1000 Controller
50 Pin Telco Centronics Connector #17	Signal	Function	Jumper	Function 2
PIN 5	Aux TX Audio	TX AUDIO		TX AUDIO #1 - Pin 11
PIN 7	GND	COR JUMPER	PIN 43	GROUND
PIN 8	5 VDC Out	PTT JUMPER	PIN 22	RELAY CLSR
PIN 11	Aux In 1 (Ext Failsoft)	PL STRIP		AUX 1 IN
PIN 12	Aux In 2 (TX Inhibit)	TX INHI		AUX 2 IN
PIN 13	Aux In 3 (Ext PTT Code Det)	AUX IN 3		
PIN 14	Aux In 4 (RX WL Inhibit)	AUX IN 4		
PIN 15	Aux In 5 (Duplex Enable)	AUX IN 5		
PIN 18	Aux Out 7 (RD Stat +)	COR JUMPER		COR #1 - Pin 6
PIN 22	Aux In 9 (Ext PTT +)	PTT JUMPER	PIN 8	
PIN 29	Line 4			RX AUDIO - Pin 13
PIN 30	Aux RX Audio	RX AUDIO		
PIN 31	Open			GROUND - Pin 24
PIN 32	GND	GROUND		
PIN 33	14.2 VDC Out	14.2 VOLTS		
PIN 36	Aux Out 1 (Failsoft Ind)			CTCSS #1 - Pin 4
PIN 37	Aux Out 2 (RX Code Det)	PL DETECT		
PIN 38	Aux Out 3	BATTERY REV DET		
PIN 39	Aux Out 4	AUX OUT 4		
PIN 43	Aux Out 7	COR JUMPER	PIN 7	
PIN 47	Aux In 9 (Ext PTT -)	PTT		PTT #1 - Pin 10
Wildcard Programming Screenshots Follow				

Radio Service Software - Base Radio

File Service Configuration Tools Help

Base Radio Configuration

- Hardware Configuration
- Wireline Configuration
- Access Code Table
- Multi-Coded Squelch Table
- Channel Information
- TRC Command Table
- DC Command Table
- RF Configuration
- Scan List Configuration
- WildCard Input
- WildCard Output
- WildCard Tables

Service

Serial Number: 225CAM0161 Station Name: ASP_C01_CH5

Hardware Platform: QUANTAR

System Type: CONVENTIONAL Station Type: ASTRO CAI CAPABLE

Rx Freq Band 1: UHF_R2 438-470 MHz Tx Freq Band: UHF_R2 438-470 MHz

Rx Freq Band 2: NONE MHz

PA Power Rating: 110 Watts

Power Supply: AC HIGH Battery Type: NONE

Options

Wireline: 8-WIRE WildCard: ENHANCED

Freq Ref: INTERNAL - STANDARD Simulcast Operation: DISABLED

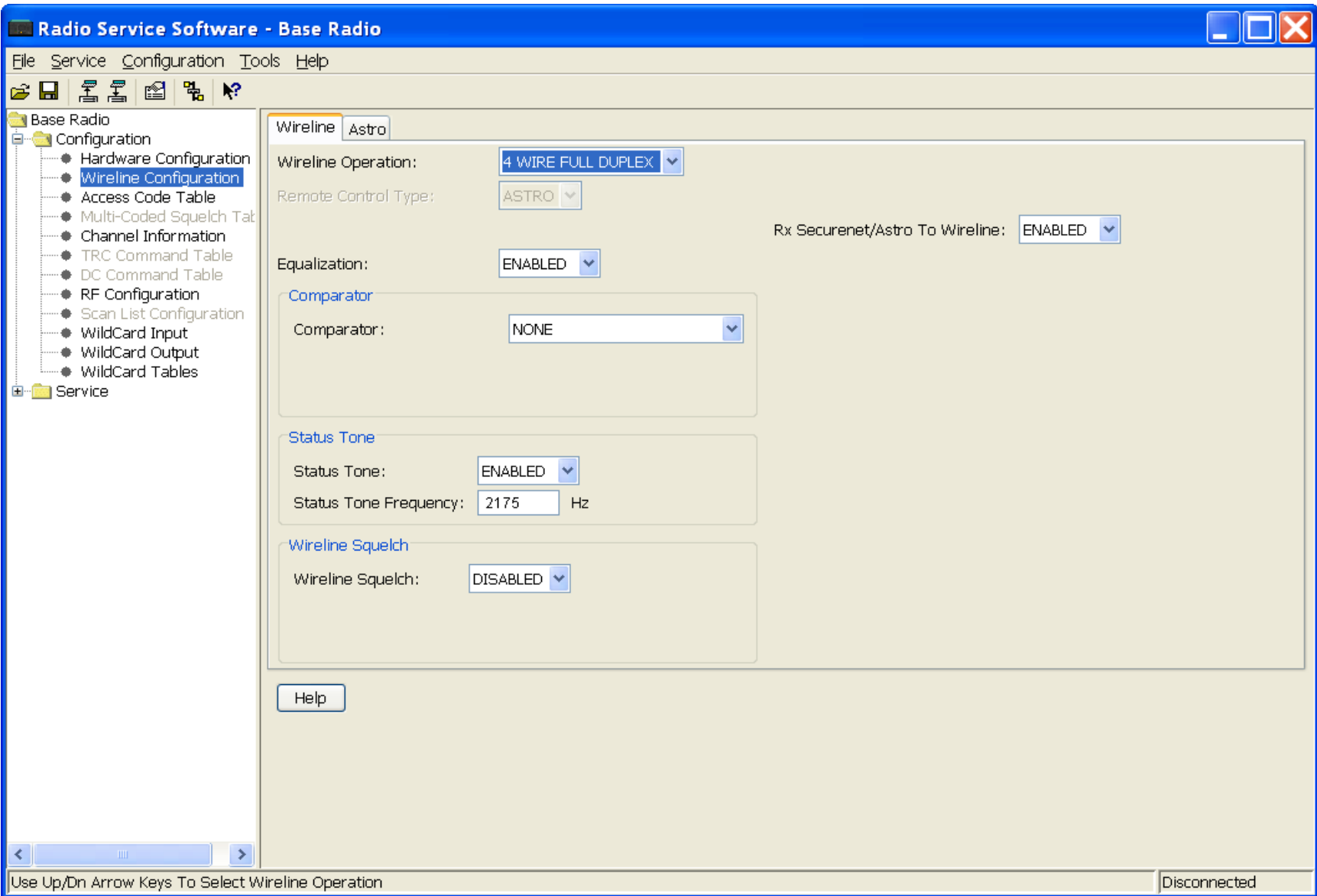
Multi-Coded Squelch: DISABLED Phone Patch Interface: DISABLED

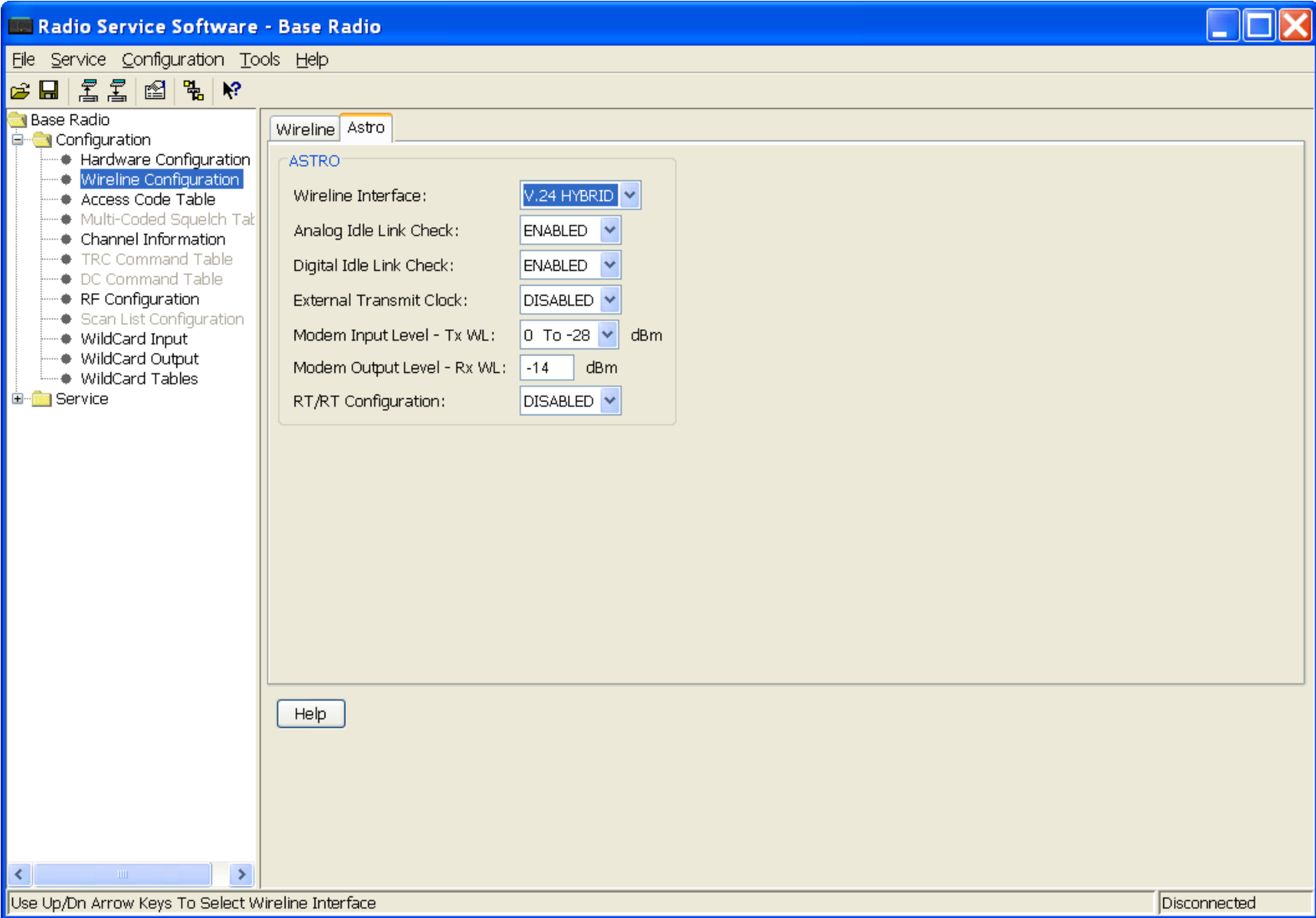
Scanning Receiver: DISABLED Site Number: 1

External Wattmeter: NONE

Help Validate Configuration

Please Enter The Serial Number Type Alphanumeric/Punctuation Chars. Disconnected





Radio Service Software - Base Radio



File Service Configuration Tools Help



- Base Radio
 - Configuration
 - Hardware Configuration
 - Wireline Configuration
 - Access Code Table
 - Multi-Coded Squelch Table
 - Channel Information
 - TRC Command Table
 - DC Command Table
 - RF Configuration
 - Scan List Configuration
 - Wildcard Input
 - Wildcard Output
 - Wildcard Tables
 - Service

Access Code Table Number: 1 Access Code Table # 1 of 1

Rx Squelch Type: PL
Rx PL/DPL Code: 3Z 123.0 Hz
Tx Squelch Type: PL
Tx PL/DPL Code: 3Z 123.0 Hz
RX NAC Operation: NORMAL
Rx Astro Access Code: 293
Tx Astro Access Code: 293

Channel(s) Using This Table: 1

Help Add Table Previous Table Next Table Reset Multi-NAC Delete Table



Please Enter An Access Code Number. Valid Range: 1 - 1

Disconnected

Radio Service Software - Base Radio

File Service Configuration Tools Help



- Base Radio
 - Configuration
 - Hardware Configuration
 - Wireline Configuration
 - Access Code Table
 - Multi-Coded Squelch Table
 - Channel Information**
 - TRC Command Table
 - DC Command Table
 - RF Configuration
 - Scan List Configuration
 - Wildcard Input
 - Wildcard Output
 - Wildcard Tables
 - Service

Channel Number: CHANNEL # 1 of 1

Basic **Advanced**

Rx1 Frequency: MHz Tx Frequency: MHz
Rx2 Frequency: MHz Tx Idle Frequency: MHz
Modulation Type:
Tx Rated Deviation: kHz
Receive Channel BW: kHz Channel Spacing

Call Sign

Call Sign:
Call Sign Over Wireline:

Access Code Table:

Analog Rx Activation:
Analog Rptr Activation:
Analog Rptr Hold-In:
Analog Rptr Access:



Please Enter A Channel Number. Valid Range Is 1 to 1

Disconnected

Radio Service Software - Base Radio

File Service Configuration Tools Help



- Base Radio
 - Configuration
 - Hardware Configuration
 - Wireline Configuration
 - Access Code Table
 - Multi-Coded Squelch Tab
 - Channel Information**
 - TRC Command Table
 - DC Command Table
 - RF Configuration
 - Scan List Configuration
 - Wildcard Input
 - Wildcard Output
 - Wildcard Tables
 - Service

Channel Number: 1 CHANNEL# 1 of 1

Basic **Advanced**

Tx Power Out

Normal: 110 Watts Battery Backup: 55 Watts

Time Out Timers

Wireline: 0 sec Local: 0 sec
Repeater: 180 sec Phone Patch: 0 sec

Alarm Tone

Over Air: ENABLED Over Wireline: ENABLED

Audio Filters

Pre-emphasis: ENABLED
De-emphasis: ENABLED Hi-Pass Filter: ENABLED

Repeater

Drop Out Delay: 2 sec
Audio Hold-Off: 0 msec

Hear Clear

Compander: DISABLED
Noise Canceller: DISABLED

Phone Patch Operation: DISABLED

Rcv Signal Inversion: DISABLED

PTT Priority: R>W>L>M>D

Analog Repeater Boost: ENABLED

Monitor Before Transmit: DISABLED

Help Add Channel Previous Channel Next Channel Delete Channel

Please Enter A Channel Number. Valid Range Is 1 to 1

Disconnected

Radio Service Software - Base Radio

File Service Configuration Tools Help



- Base Radio
 - Configuration
 - Hardware Configuration
 - Wireline Configuration
 - Access Code Table
 - Multi-Coded Squelch Tab
 - Channel Information
 - TRC Command Table
 - DC Command Table
 - RF Configuration
 - Scan List Configuration
 - Wildcard Input
 - Wildcard Output
 - Wildcard Tables
 - Service

Repeater Operation: BASE

Max Deviation: 100 %

Low Speed/PL Deviation: 17.0 %

Antenna

Antenna Relay: DISABLED

Call Sign Interval: 10 min

Startup On Last Active Channel: DISABLED

Startup Channel: 1

ASTRO Fade Tolerance: 3 FRAMES

PACKET DATA

Repeat: DISABLED

Wireline Drop Out Delay: 0 sec

ASTRO Tx Filter: NARROW PULSE

Securenet

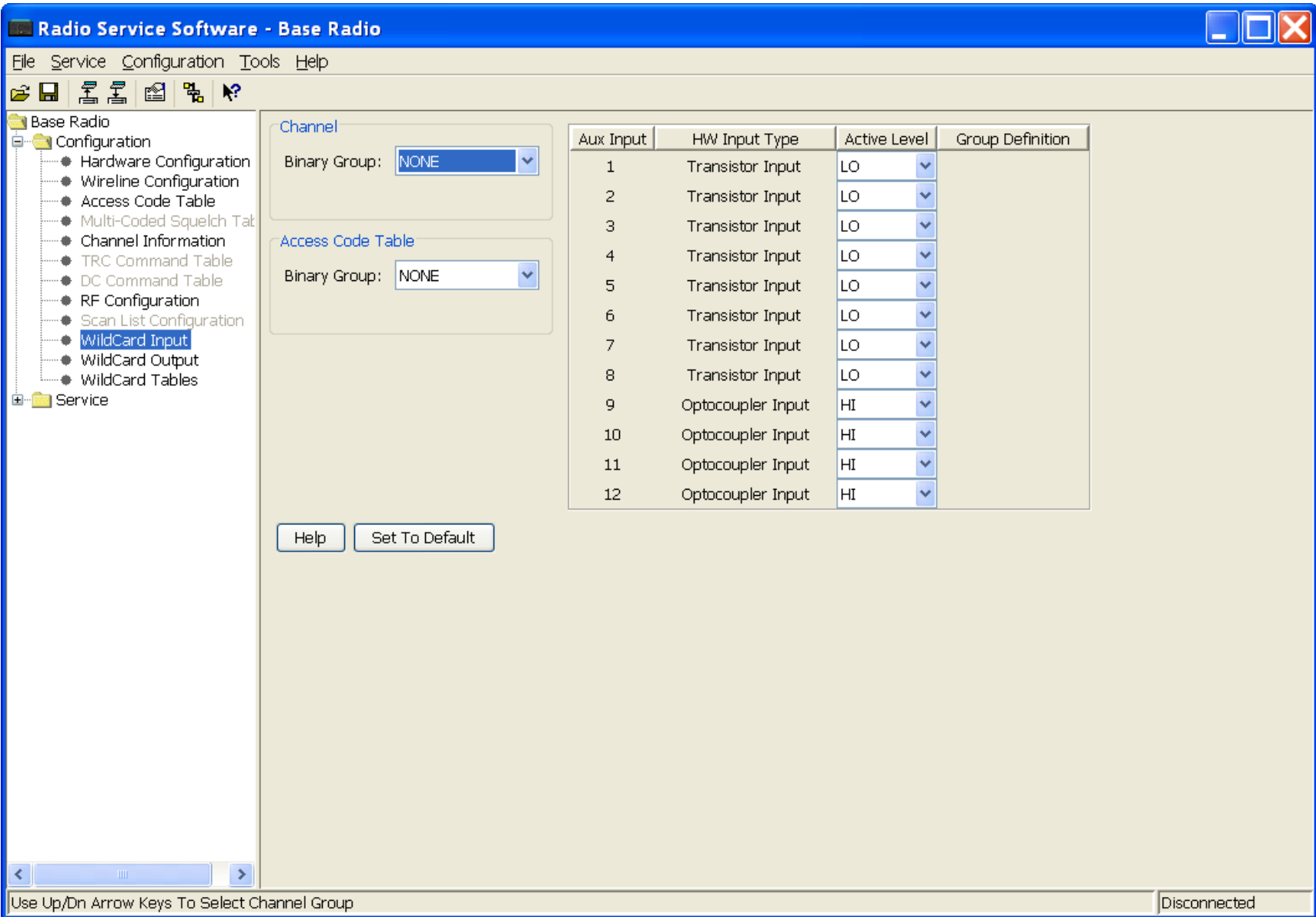
Rx Code Detect Fade Timer: 80 msec

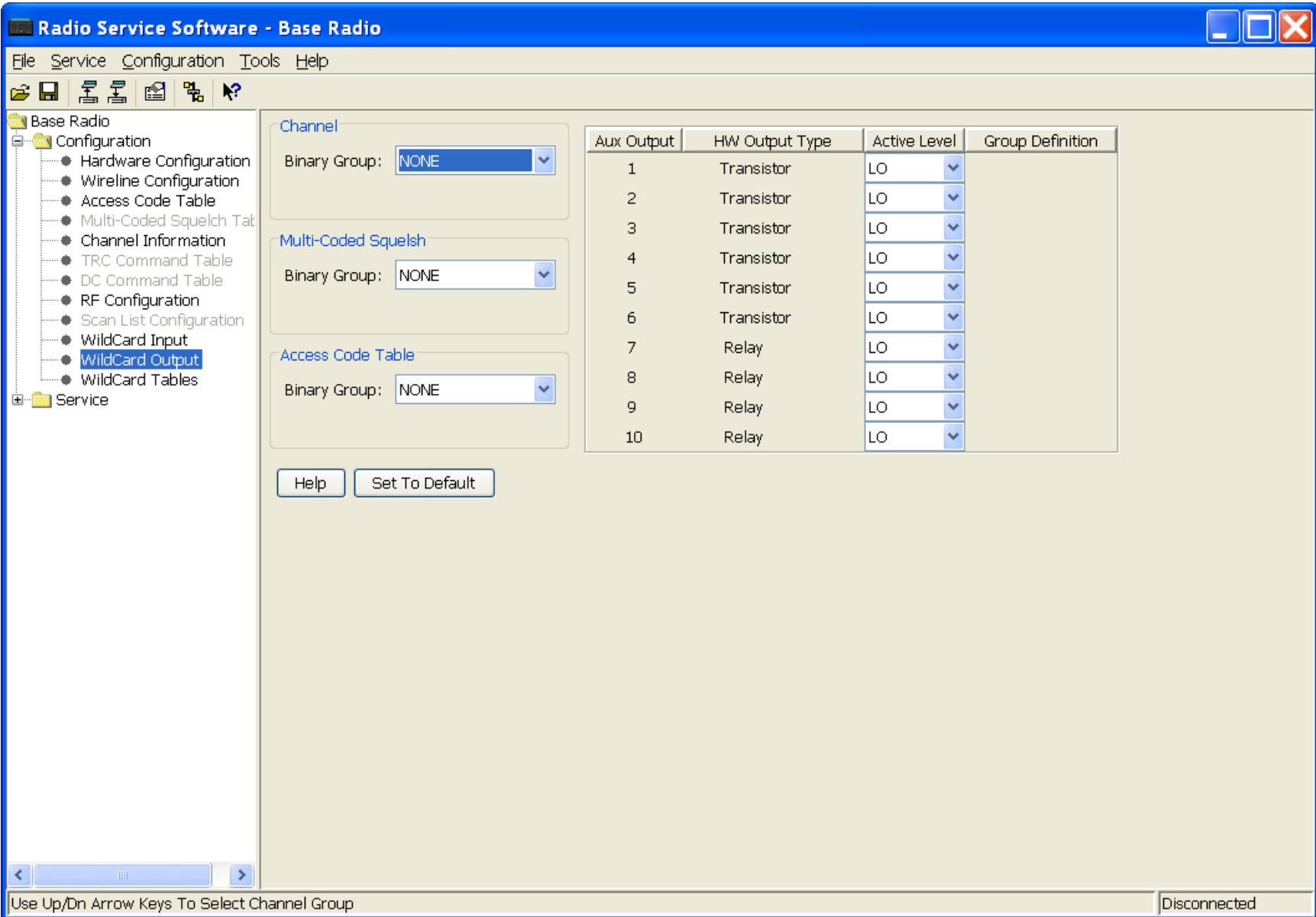
Fade EOM Timer: 80 msec

Help

Use Up/Dn Arrow Keys To Select Repeater Operation

Disconnected





Radio Service Software - Base Radio

File Service Configuration Tools Help



- Base Radio
 - Configuration
 - Hardware Configuration
 - Wireline Configuration
 - Access Code Table
 - Multi-Coded Squelch Tab
 - Channel Information
 - TRC Command Table
 - DC Command Table
 - RF Configuration
 - Scan List Configuration
 - Wildcard Input
 - Wildcard Output
 - Wildcard Tables
 - Service

Description: RX AUDIO TABLE 1 OF 8 Jump to Table: 1

State And Condition Settings

State:	Cond:	State:	Cond:	State:
RX1 LOCK				

Action

RX1+AUXRX ON	

Inaction

NULL	

Help Add Table Set To Default Previous Table Next Table Delete Table Programming Rules



Enter a Description of the State Condition

Disconnected

Radio Service Software - Base Radio

File Service Configuration Tools Help



- Base Radio
 - Configuration
 - Hardware Configuration
 - Wireline Configuration
 - Access Code Table
 - Multi-Coded Squelch Tab
 - Channel Information
 - TRC Command Table
 - DC Command Table
 - RF Configuration
 - Scan List Configuration
 - Wildcard Input
 - Wildcard Output
 - Wildcard Tables
 - Service

Description: PL DETECT LOGIC TABLE 2 OF 8 Jump to Table: 2

State And Condition Settings

State:	Cond:	State:	Cond:	State:
RX PL DETECT				

Action

SET OUTPUT	2

Inaction

CLR OUTPUT	2

Help Add Table Set To Default Previous Table Next Table Delete Table Programming Rules

< [] >

Enter a Description of the State Condition

Disconnected

Radio Service Software - Base Radio

File Service Configuration Tools Help



- Base Radio
 - Configuration
 - Hardware Configuration
 - Wireline Configuration
 - Access Code Table
 - Multi-Coded Squelch Tab
 - Channel Information
 - TRC Command Table
 - DC Command Table
 - RF Configuration
 - Scan List Configuration
 - Wildcard Input
 - Wildcard Output
 - Wildcard Tables
 - Service

Description: TX AUDIO IN TABLE 3 OF 8 Jump to Table: 3

State And Condition Settings

State:	Cond:	State:	Cond:	State:
LINE PTT				

Action

AUXTX-TX ON	

Inaction

AUXTX-TX OFF	

Help Add Table Set To Default Previous Table Next Table Delete Table Programming Rules



Enter a Description of the State Condition

Disconnected

Radio Service Software - Base Radio

File Service Configuration Tools Help



- Base Radio
 - Configuration
 - Hardware Configuration
 - Wireline Configuration
 - Access Code Table
 - Multi-Coded Squelch Tab
 - Channel Information
 - TRC Command Table
 - DC Command Table
 - RF Configuration
 - Scan List Configuration
 - Wildcard Input
 - Wildcard Output
 - Wildcard Tables
 - Service

Description: REPEATER PTT TABLE 4 OF 8 Jump to Table: 4

State And Condition Settings

State:	Cond:	State:	Cond:	State:
INPUT 9				

Action

KEY FROM WL	

Inaction

DEKEY FROM WL	

Help Add Table Set To Default Previous Table Next Table Delete Table Programming Rules

< | >

Enter a Description of the State Condition

Disconnected

Radio Service Software - Base Radio

File Service Configuration Tools Help



- Base Radio
 - Configuration
 - Hardware Configuration
 - Wireline Configuration
 - Access Code Table
 - Multi-Coded Squelch Tab
 - Channel Information
 - TRC Command Table
 - DC Command Table
 - RF Configuration
 - Scan List Configuration
 - Wildcard Input
 - Wildcard Output
 - Wildcard Tables
 - Service

Description: COR TABLE 5 OF 8 Jump to Table: 5

State And Condition Settings

State:	Cond:	State:	Cond:	State:
RX QUAL MET	AND	RX CAR DETECT	AND NOT	RX ASTRO ID

Action

SET OUTPUT	7

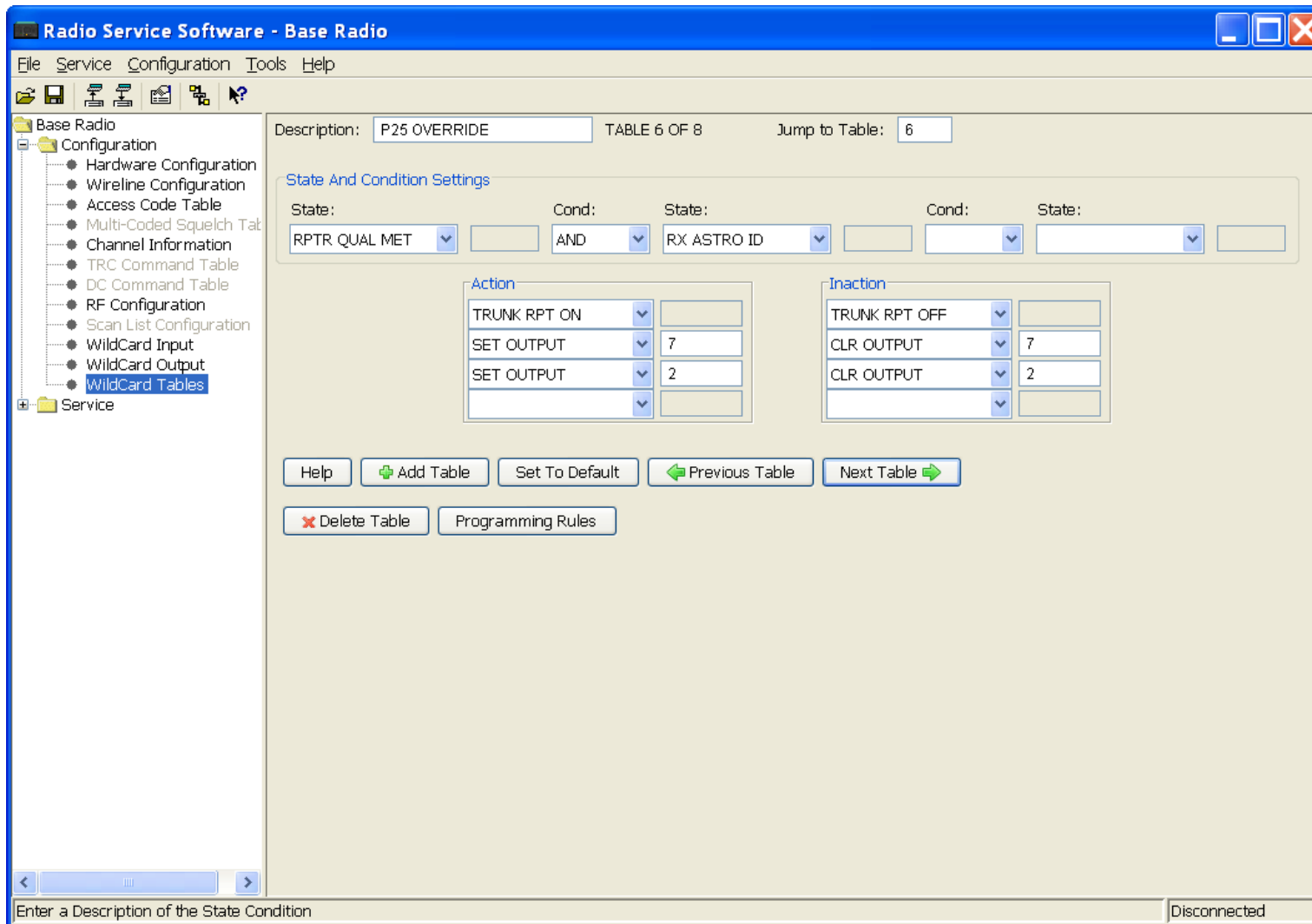
Inaction

CLR OUTPUT	7

Help Add Table Set To Default Previous Table Next Table Delete Table Programming Rules

Enter a Description of the State Condition

Disconnected



PLEASE NOTE THAT ON SOME STATIONS "RPTR QUAL MET" MUST BE CHANGE TO "RX QUAL MET"

Radio Service Software - Base Radio

File Service Configuration Tools Help



- Base Radio
 - Configuration
 - Hardware Configuration
 - Wireline Configuration
 - Access Code Table
 - Multi-Coded Squelch Tab
 - Channel Information
 - TRC Command Table
 - DC Command Table
 - RF Configuration
 - Scan List Configuration
 - Wildcard Input
 - Wildcard Output
 - Wildcard Tables
 - Service

Description: TX PL STRIP TABLE 7 OF 8 Jump to Table: 7

State And Condition Settings

State:	Cond:	State:	Cond:	State:
INPUT 1				

Action

TX PL DISABLE	

Inaction

TX PL ENABLE	

Help Add Table Set To Default Previous Table Next Table Delete Table Programming Rules

< | | >

Enter a Description of the State Condition

Disconnected

Radio Service Software - Base Radio

File Service Configuration Tools Help



- Base Radio
 - Configuration
 - Hardware Configuration
 - Wireline Configuration
 - Access Code Table
 - Multi-Coded Squelch Tab
 - Channel Information
 - TRC Command Table
 - DC Command Table
 - RF Configuration
 - Scan List Configuration
 - Wildcard Input
 - Wildcard Output
 - Wildcard Tables
 - Service

Description: BATT REV. LOGIC TABLE 8 OF 8 Jump to Table: 8

State And Condition Settings

State:	Cond:	State:	Cond:	State:
BATTERY REVERT				

Action

SET OUTPUT	3

Inaction

CLR OUTPUT	3

Press F2 For State Field

Help Add Table Set To Default Previous Table Next Table

Delete Table Programming Rules

Enter a Description of the State Condition

Disconnected