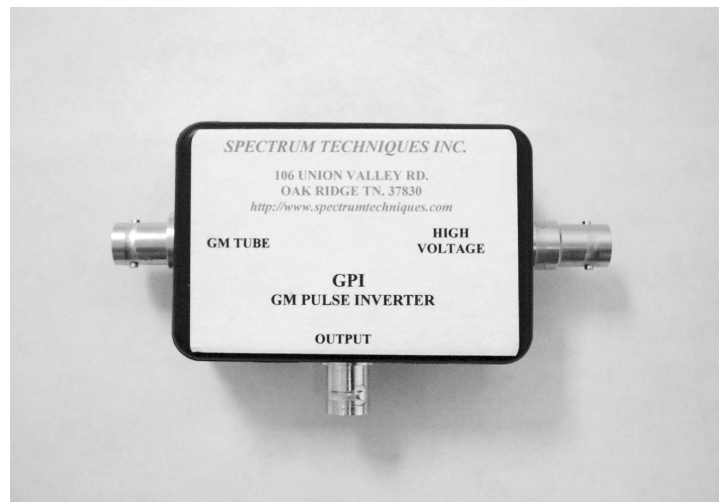


SPECTECH

GM Tube Pulse Inverter Model GPI



Operating Instructions

Spectrum Techniques
Oak Ridge, Tenn. USA

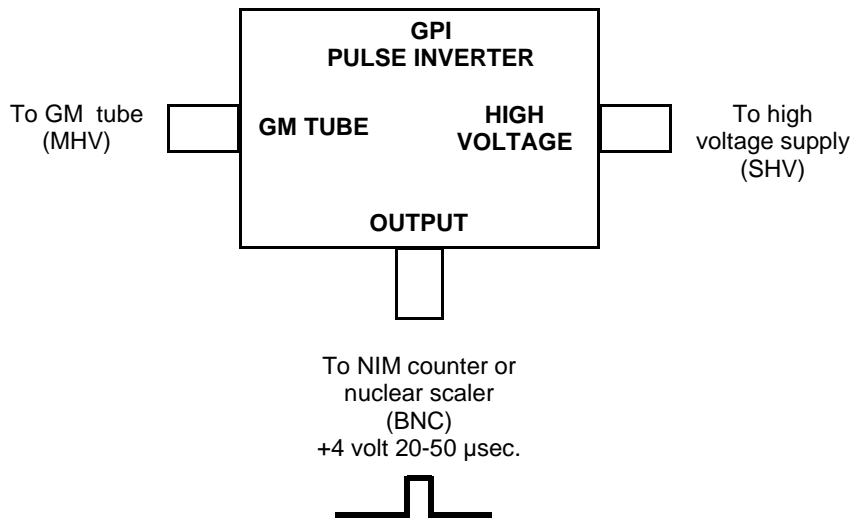
General Information

The GPI Pulse Inverter is designed to interface a Geiger Mueller detector to a nuclear counter requiring positive polarity TTL or NIM logic input. The Pulse Inverter amplifies the negative signal from the GM tube and inverts its polarity producing a positive output signal of 4 volts amplitude and 20 μ sec duration.

Power for the GPI is provided from the high voltage supply used to operate the GM tube. Current requirement is about 500 μ A. so a high voltage supply with a capacity of at least 1 mA. is recommended. Geiger tubes normally operate in the range of +300 to +1000 volts depending on the specific tube, so the operating plateau should first be run to determine the correct operating voltage.

Connection

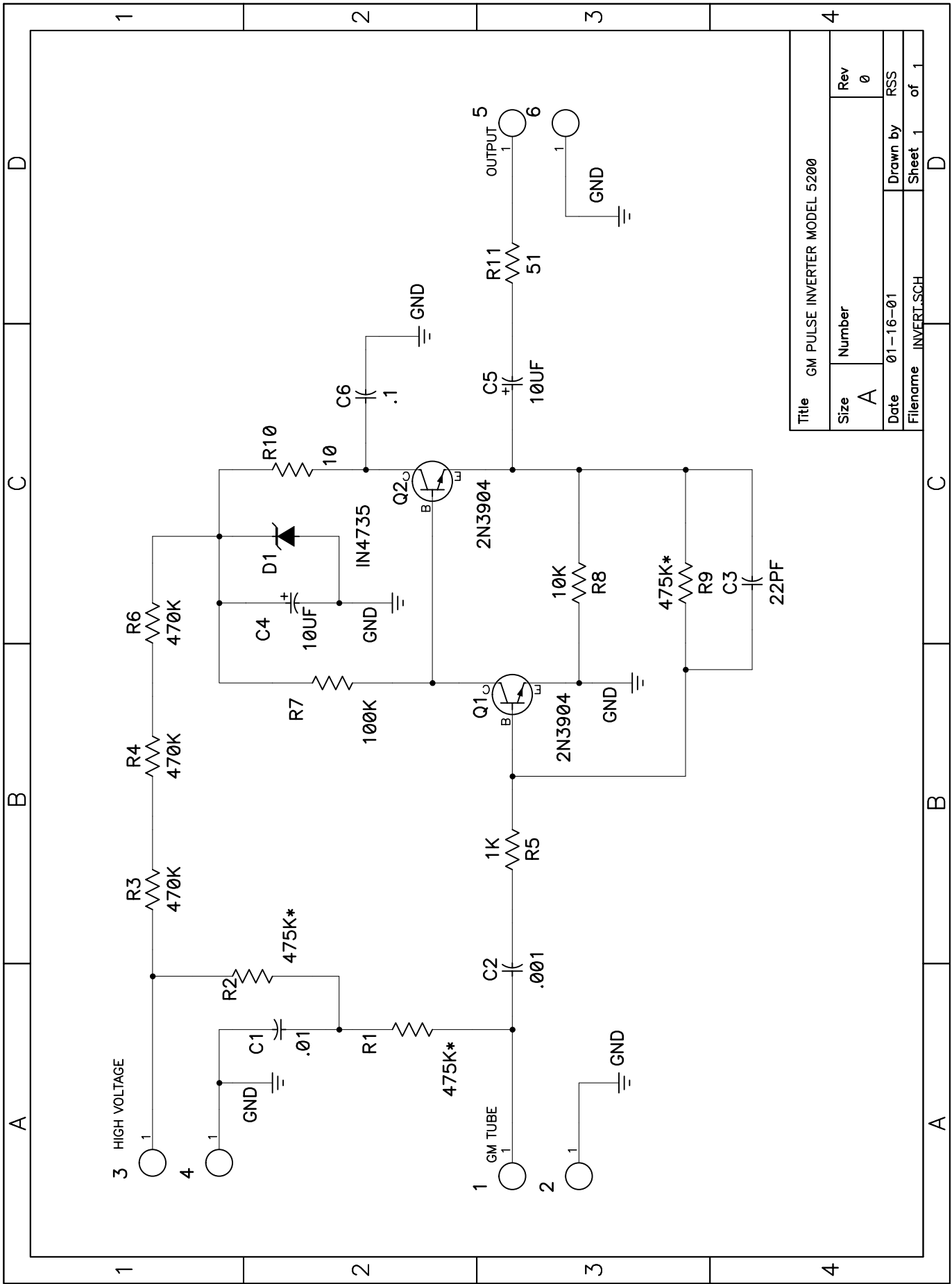
Connect the GPI as shown in the following diagram.



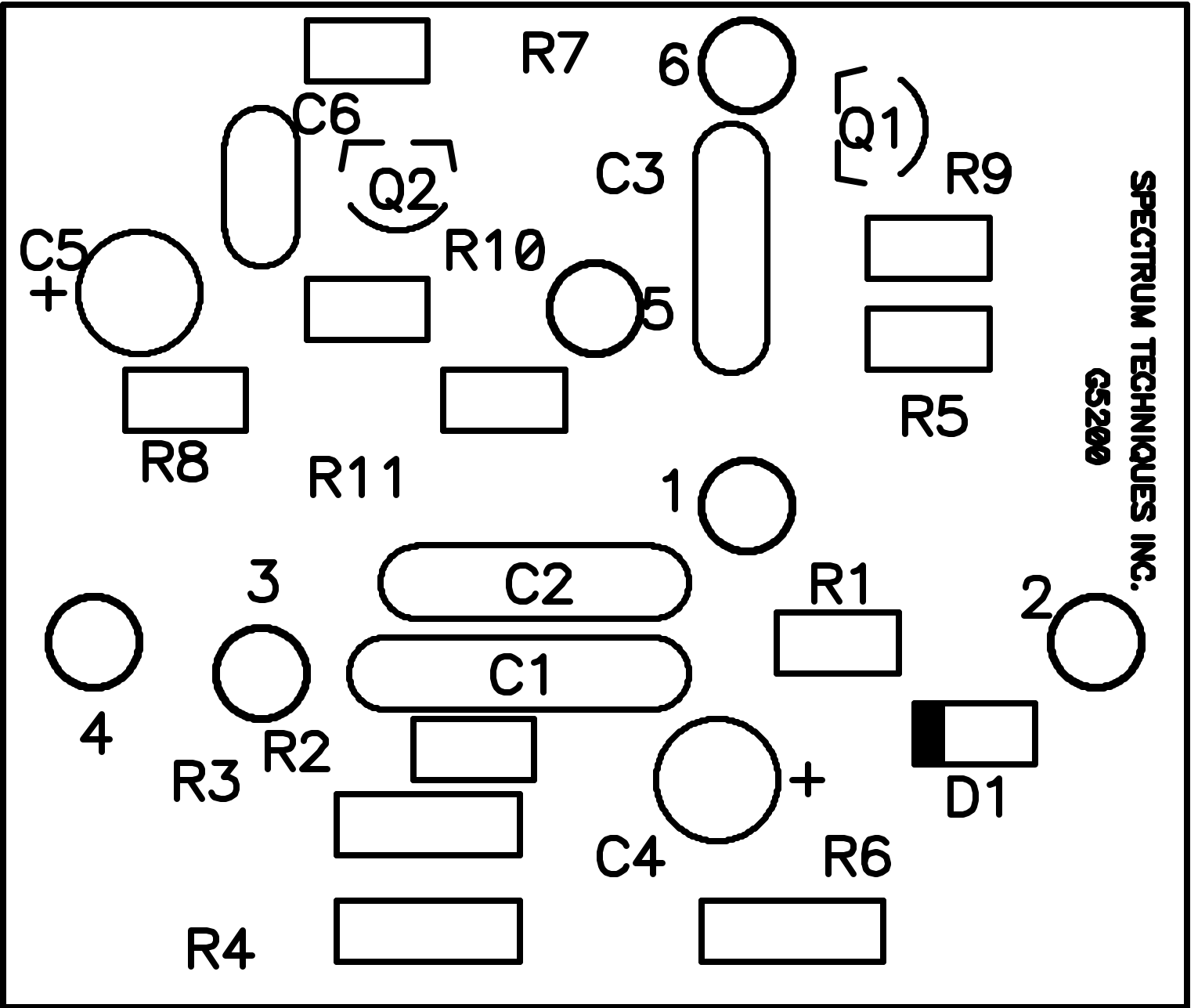
Manufactured by:

Spectrum Techniques, Inc.
106 Union Valley Road
Oak Ridge, TN 37830
USA.

Tel: (865) 482-9937
Fax: (865) 483-0473
E-mail: support@spectrumtechniques.com
www.spectrumtechniques.com



Title GM PULSE INVERTER MODEL 5200			
Size	Number	Rev	
A		0	
Date	Drawn by		RSS
01-16-01			
Filename	Sheet		of
INVERT.SCH	1		1



SPECTRUM TECHNIQUES INC.

GS200