

---

TECHNICAL MANUAL

**DIRECT SUPPORT AND GENERAL SUPPORT MAINTENANCE  
REPAIR PARTS AND SPECIAL TOOLS LIST  
(INCLUDING DEPOT MAINTENANCE REPAIR PARTS AND SPECIAL  
TOOLS)  
FOR  
RADIAC SET AN/PDR-56F (NSN 6665-01-113-9530)**

---

**HEADQUARTERS, DEPARTMENT OF THE ARMY**

1 AUGUST 1986

**DIRECT SUPPORT AND GENERAL SUPPORT MAINTENANCE  
REPAIR PARTS AND SPECIAL TOOLS LIST  
(INCLUDING DEPOT MAINTENANCE REPAIR PARTS AND SPECIAL TOOLS)  
FOR  
RADIAC SET AN/PDR-56F (NSN 6665-01-113-9530)**

Current as of 22 May 1986

**REPORTING ERRORS AND RECOMMENDING IMPROVEMENTS**

You can help improve this manual. If you find any mistakes or if you know of a way to improve the procedures, please let us know. Mail your letter, DA Form 2028 (Recommended Changes to Publications and Blank Forms), or DA Form 2028-2 located in back of this manual direct to Commander, US Army Communications-Electronics Command and Fort Monmouth, ATTN: AMSEL-ME-MP, Fort Monmouth, NJ 07703-5007.

In either case, a reply will be furnished direct to you.

**Table of Contents**

		<i>Page</i>	<i>Illus Figure</i>
Section	I. Introduction .....	1	
	II. Repair Parts List .....	1-1	
Group	00 Radiac Set AN/PDR-56F.....	1-1	1
	01 Radiacmeter .....	2-1	2
	0101 Cover Assembly (See Group 01 for parts)		
	010101 Meter Linkage Assembly (See Group 01 for parts)		
	010102 Meter Light Assembly (See Group 01 for parts)		
	010103 PC Board Assembly .....	3-1	3
	0102 Radiac Case, Source .....	4-1	4
	02 Main Probe Assembly (Includes Emitter Follower .....	5-1	5
	0201 Main Probe Case Assembly (See Group 02 for parts)		

**\*This manual supersedes TM 11-6665-245-34P, 27 January 1983.**

## Table of Contents-Continued

		020101 Main Probe Window Assembly (See Group 02 for parts)		
	03	Auxiliary Probe Assembly . . . . .	6-1	6
		0301 Auxiliary Probe Window Assembly (See Group 03 for parts)		
	04	X-Ray Probe Assembly . . . . .	7-1	7
		0401 PCB Assembly . . . . .	8-1	8
Group Section	05	Case, Radiac Set D4609 . . . . .	9-1	9
	III.	Special Tools List (Not applicable)		
	IV.	National Stock Number and Part Number		
		Index . . . . .	I-1	

## SECTION I INTRODUCTION

### 1. Scope

This manual lists and authorizes spares and repair parts; special tools, special test, measurement, and diagnostic equipment (TDME); and other special support equipment required for performance of direct support and general support maintenance of direct support and general support maintenance of the AN/PDR-56F. It authorizes the requisitioning, issue, and disposition of spares, repair parts and special tools as indicated by the source, maintenance and recoverability (SMR) codes.

### 2. General

This Repair Parts and Special Tools List is divided into the following sections:

*a. Section II. Repair Parts List.* A list of spares and repair parts authorized by this RPSTL for use in the performance of maintenance. The list also includes parts which must be removed for replacement of the authorized parts. Parts lists are composed of functional groups in ascending numeric sequence, with the parts in each group listed in ascending item number sequence. Figure numbers are listed directly beneath the group header.

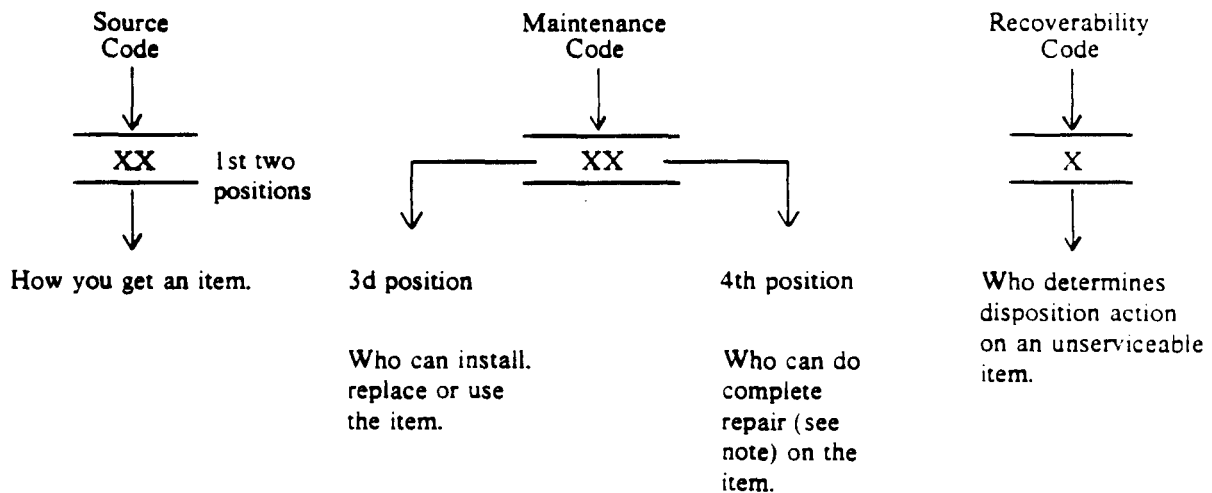
*b. Section III. Special Tools List.* Not applicable.

*c. Section IV. National Stock Number and Part Number Index.* A list, in National item identification number (NIIN) sequence, of all National stock numbered items appearing in the listing, followed by a list in alphabetic sequence of all part numbers appearing in the listings. National stock numbers and part numbers are cross-referenced to each illustration figure and item number appearance.

### 3. Explanation of Columns (Section II and III)

*a. Item No. (Column(1)).* Indicates the number used to identify items called out in the illustration.

*b. SMR Code (Column(2)).* The source, maintenance, and recoverability (SMR) code is a five-position code containing supply/requisitioning information, maintenance category authorization criteria, and disposition instruction as shown in the following breakout:



## NOTE

Complete repair: Maintenance capacity, capability, and authority to perform all corrective maintenance tasks of the "Repair" function in a use/user environment in order to restore serviceability to a failed item.

(1) *Source Code*. The source code tells you to get an item needed for maintenance, repair, or overhaul of an end item/equipment. Explanations of source codes follows:

### Code

### Explanation

PA  
PB  
PC  
PD  
PE  
PF  
PG

Stocked items; use the applicable NSN to request/requisition items with these source codes. They are authorized to the category indicated by the code entered in the third position of the SMR code.

### NOTE

Items coded PC are subject to deterioration.

KD  
KF  
KB

Items with these codes are not to be requested/requisitioned individually. They are of a kit which is authorized to the maintenance category indicated in the third position of the SMR code. The complete kit must be requisitioned and applied

MO—Made at  
org/AVUM  
category  
MF—Made at  
DS/AVUM  
category  
MH—Made at  
GS  
category  
ML—Made at  
Specialized  
Repair  
Activity  
(SRA)  
MD—Made at  
Depot

Items with these codes are not to be requested/requisitioned individually. They must be made from bulk material which is identified by the part number in the description and usable on code (UOC) column and listed in the Bulk Material group of the repair parts list. If the item is authorized to you by the third position code of the SMR code, but the source code indicates it is made at a higher category, order the item from the higher category of maintenance.

AO—Assembled by  
org/AVUM  
category  
AF—Assembled by  
DS/AVIM  
category  
AH—Assembled by  
GS category  
AL—Assembled by  
SRA  
AD—Assembled by  
Depot

Items with these codes are not to be requested/requisitioned individually. The parts that make up the assembled item must be requisitioned or fabricated and assembled at the category of maintenance indicated by the source code. If the third position code of the SMR code authorizes you to replace the item, but the source code indicates the item is assembled at a higher category, order the item from the higher category of maintenance.

<i>Code</i>	<i>Explanation</i>
XA-Do not requisition an "XA" coded item. Order its next higher assembly.	XD-Item is not stocked. Order an "XD" coded item through normal supply channels using the FSCM and part number given, if no NSN is available.
XB-If an "XB" item is not available from salvage, order it using the FSCM and part number given.	
XC-Installation drawing, diagram, instruction sheet, field service drawing, that is identified by manufacturers part number.	

#### NOTE

Cannibalization or controlled exchange, when authorized, may be used as a source of supply for items with the above source codes, except for those source coded "XA" or those aircraft support items restricted by requirements of AR 750-1.

(2) *Maintenance code.* Maintenance code tell you the category of maintenance authorized to USE and REPAIR support items. The maintenance codes are entered in the third and fourth positions of the SMR code as follows:

(a) The maintenance code entered in the third position tells you the lowest maintenance category authorized to remove, replace, and use an item. The maintenance code entered in the third position will indicate authorization to one of the following categories of maintenance.

<i>Code</i>	<i>Application/Explanation</i>
C—Crew or operator maintenance done within organizational or aviation maintenance.	
O—Organizational or aviation unit category can remove, replace, and use the item.	

- F—Direct support or aviation intermediate category can remove, replace, and use the item.
- H—General support category can remove, replace, and use the item.
- L—Specialized repair activity can remove, replace, and use the item.
- D—Depot category can remove, replace, and use the item.

(b) The maintenance code entered in the fourth position tells whether or not the item is to be repaired and identifies the lowest maintenance category with the capability to do complete repair (i.e., perform all authorized repair functions). This position will contain one of the following maintenance codes.

#### NOTE

Some limited repair may be done on the item at a lower category of maintenance, if authorized by the Maintenance Allocation Chart (MAC) and SMR codes.

<i>Code</i>	<i>Application/Explanation</i>
O—Organizational or aviation unit is the lowest category that can do complete repair of the item.	
F—Direct support or aviation intermediate is the lowest category that can do complete repair of the item.	
H—General support is the lowest category that can do complete repair of the item.	
L—Specialized repair activity ( designate the specialized repair activity) is the lowest category that can do complete repair of the item.	
D—Depot is the lowest category that can do complete repair of the item.	

- Z—Nonreparable. No repair is authorized.
- B—No repair is authorized. ( No parts or special tools are authorized for the maintenance of a "B" coded item). However, the item may be reconditioned by adjusting, lubricating, etc., at the user category

(3) *Recoverability code.* Recoverability codes are assigned to items to indicate the disposition action on unserviceable items. The recoverability code is entered in the fifth position of the SMR Code as follows:

## Recoverability

Code	Application/Explanation
Z—Nonreparable	Item. When unservicable, condemn and dispose of the item at the category of maintenance shown in the third position of SMR Code.
O—Reparable	item. When uneconomically reparable, condemn and dispose of the item at organizational or aviation unit category.
F—Reparable	item. When uneconomically reparable, condemn and dispose of the item at direct support or aviation intermediate category.
H—Reparable	item. When uneconomically reparable, condemn and dispose of the item at general support category.
D—Reparable	item. When beyond lower category repair capability, return to depot. Condemnation and disposal of item not authorized below depot category.
L—Reparable	item. Condemnation and disposal not authorized below specialized repair activity (SRA).

A—Item requires special handling or condemnation procedures because of specific reasons (e.g., precious metal content, high dollar value, critical material, or hazardous material). Refer to appropriate manuals/directives for specific instructions.

*e. FSCM (Column (3)).* The Federal Supply Code for Manufacturer (FSCM) is a 5-digit numeric code which is used to identify the manufacturer, distributor, or Government Agency, etc., that supplies the item.

*d. Part Number (Column (4)).* Indicates the primary number used by the manufacturer (individual, company, firm, corporation, or Government activity), which controls the design and characteristics of the item by means of its engineering drawings, specifications, standards, and inspection requirements to identify an item or range of items.

## NOTE

When you use a NSN to requisition an item, the item you receive may have a different part number from the part ordered.

*e. Description and Usable on Code(UOC) (Column (5)).* This column includes the following information.

- (1) The Federal item name and, when required, a minimum description to identify the item.
- (2) Usable on code, when applicable (para 5).
- (3) The statement "END OF FIGURE" appears just below the last item description in Column (5) for a given figure in both section II and section III.

*f. Qty (Column (6)).* Indicates the quantity of the item used in the breakout shown on the illustration figure, which is prepared for a functional group, subfunctional group, or an assembly. A "V" appearing in this column in lieu of a quantity indicates that the quantity is variable and the quantity may vary from application to application.

## 4., Explanation of Columns (Section IV)

*a. National Stock Number (NSN) Index.*

(1) *Stock number column.* This column lists the NSN by National item identification number (NIIN) sequence. The NIIN consists of the last nine digits of the NSN. When using this column to locate an item, ignore the first four digits of the NSN. When requisitioning items use the complete NSN (13 digits).

(2) *Fig. column.* This column lists the number of the figure where the item is identified/located. The illustrations are in numerical sequence in sections II and III.

(3) *Item column.* The item number identifies the item associated with the figure listed the adjacent Fig. column. This item is also identified by the NSN listed on the same line.

*b. Part Number Index.* Part numbers in this index are

listed by part number in ascending alphameric sequence.

(1) *FSCM column.* This column lists the Federal supply code for manufacturer (FSCM).

(2) *Part number column.* This column indicates the part number assigned to the item.

(3) *Stock number column.* This column lists the National stock number for the associated part number and manufacturer identified in the part number and FSCM columns to the left.

(4) *Fig. column.* This column lists the number of the figure where the item is identified/located in sections II and III.

(5) *Item Column.* The item number is that number assigned to the item as it appears in the figure referenced in the adjacent figure number column.

## 5. Special Information

*a. Usable on Code.* The usable on code appears in the lower left corner of the description column heading. Usable on codes are shown as "UOC" in the description column (justified left) on the first line applicable item description nomenclature. Uncoded items are applicable to all models. Identification of the usable on codes used in this RPSTL are:

*a. Associated Publications.* The publications listed below pertain to the AN/PDR-56F and its components:  
TM 11-665-245-12, Radiac Set AN/PDR-56F  
TM 11-6665-245-12HR, Radiac Set AN/PDR-56F  
TM 11-6665-245-34, Radiac Set AN/PDR-56F

## 6. How to Locate Repair Parts

*a.* When National stock number or part number is not known.

(1) *First.* Using the table of contents, determine the assembly group or subassembly group to which the item belongs. This is necessary since figures are prepared for assembly groups and subassembly groups, and listings are divided into the same groups.

(2) *Second.* Find the figure covering the assembly group or subassembly group to which the item belongs.

(3) *Third.* Identify the item on the figure and note the item number.

(4) *Fourth.* Refer to the Repair Parts List for the figure to find the part number for the item number noted on the figure.

(5) *Fifth.* Refer to the Part Number Index to find the NSN, if assigned.

*b.* When National stock number or part number is known.

(1) *First.* Using the index of National stock numbers and part numbers, find the pertinent National stock number or part number. The NSN index is in National item identification number (NIIN) sequence (para 4 *a* (1)). The part numbers in the part number index are listed in ascending alphameric sequence (para 4*b*). Both indexes cross-reference you to the illustration figure and item number of the item you are looking for.

(2) *Second.* After finding the figure and item number, verify that the item is the one you're looking for, then locate the item number in the repair parts list for the figure.

## 7. Abbreviations

Not applicable.



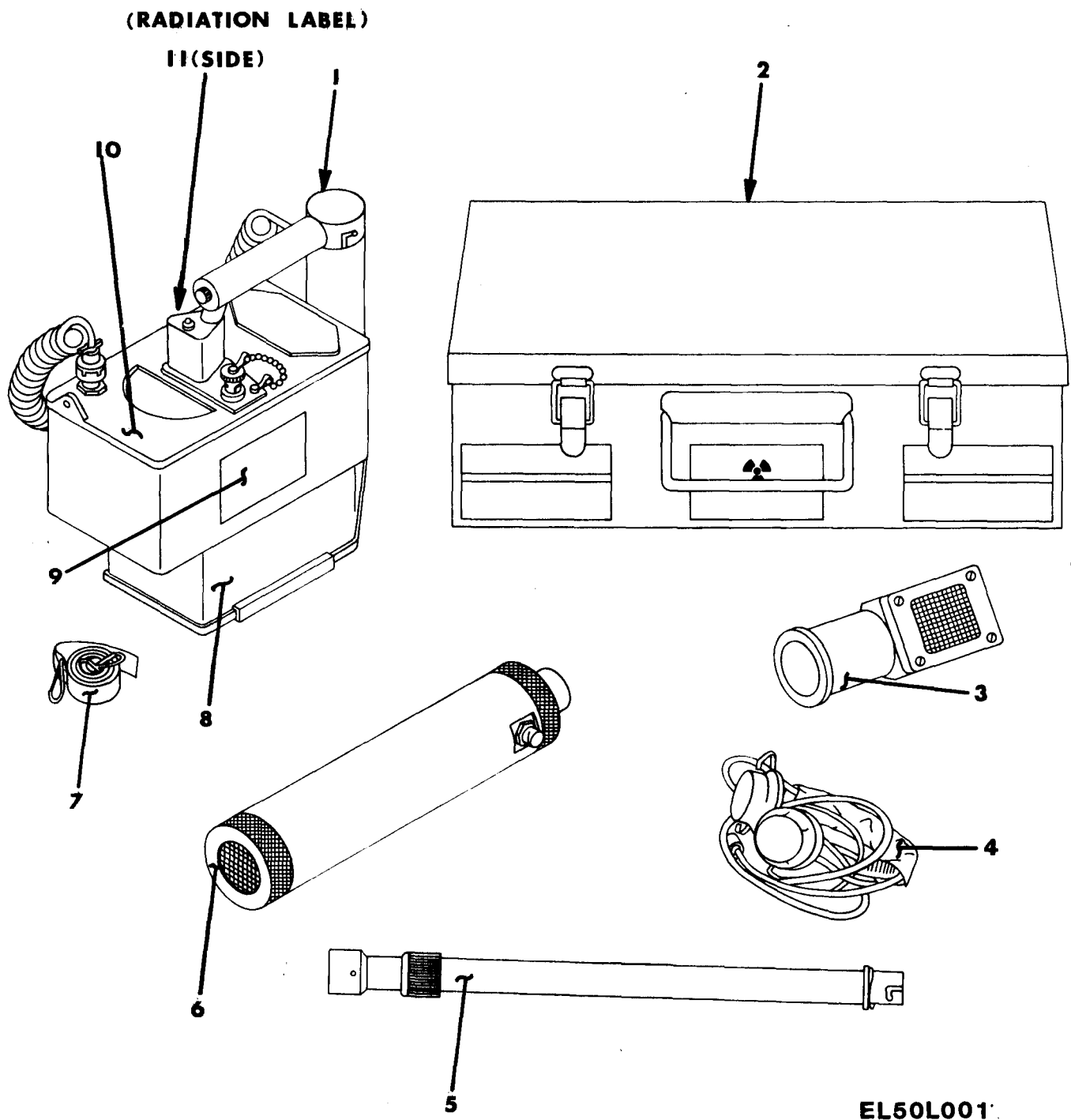
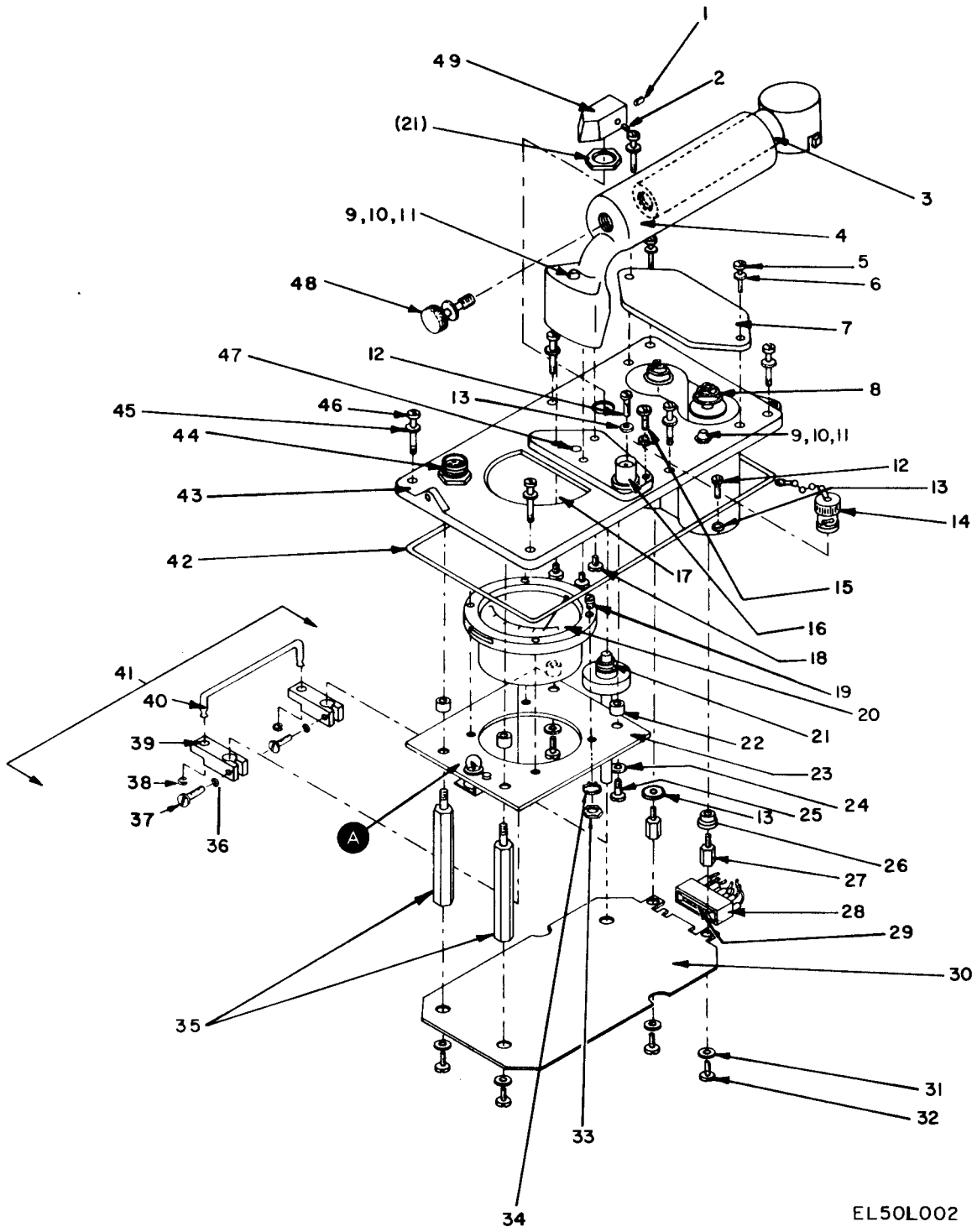


Figure 1. Radiac Set AN/PDR-56F

SECTION II				TM11-6665-245-34P	
(1)	(2)	(3)	(4)	(5)	(6)
ITEM NO	SMR CODE	FSCM	PART NUMBER	DESCRIPTION AND USABLE ON CODE (UOC)	QTY
GROUP 00 RADIAC SET,AN/PDR-56F					
FIGURE 1					
1	PAHHH	96696	D3853 REV B	RADIACMETER	1
2	XBODD	96696	D4609 REV B	CARRYING CASE ASSY	1
3	PAOHH	96696	B4177 REV C	PROBE,RADIAC	1
4	PAOZZ	80058	H-43B/U	HEADSET,ELECTRICAL	1
5	XBHZZ	96696	B1112 REV D	PROBE HNDL EXTNSION	1
5	XAOZZ	96696	A3391 REV D	HANDLE EXTENSION	1
6	PADDD	80058	DT590A/PDR-56F	PROBE,RADIAC	1
7	PAOZZ	96696	B1031 REV B	CARRYING STRAP	1
8	XBHZZ	96696	D4179	PROBE SUBASSEMBLY	1
9	XBHZZ	96696	B4625	NAMEPLATE,RADIAC	1
10	XBHZZ	96696	D3854 REV B	PANEL ASSY	1
11	XBHZZ	96696	B1147	LABEL,RADIATION	1

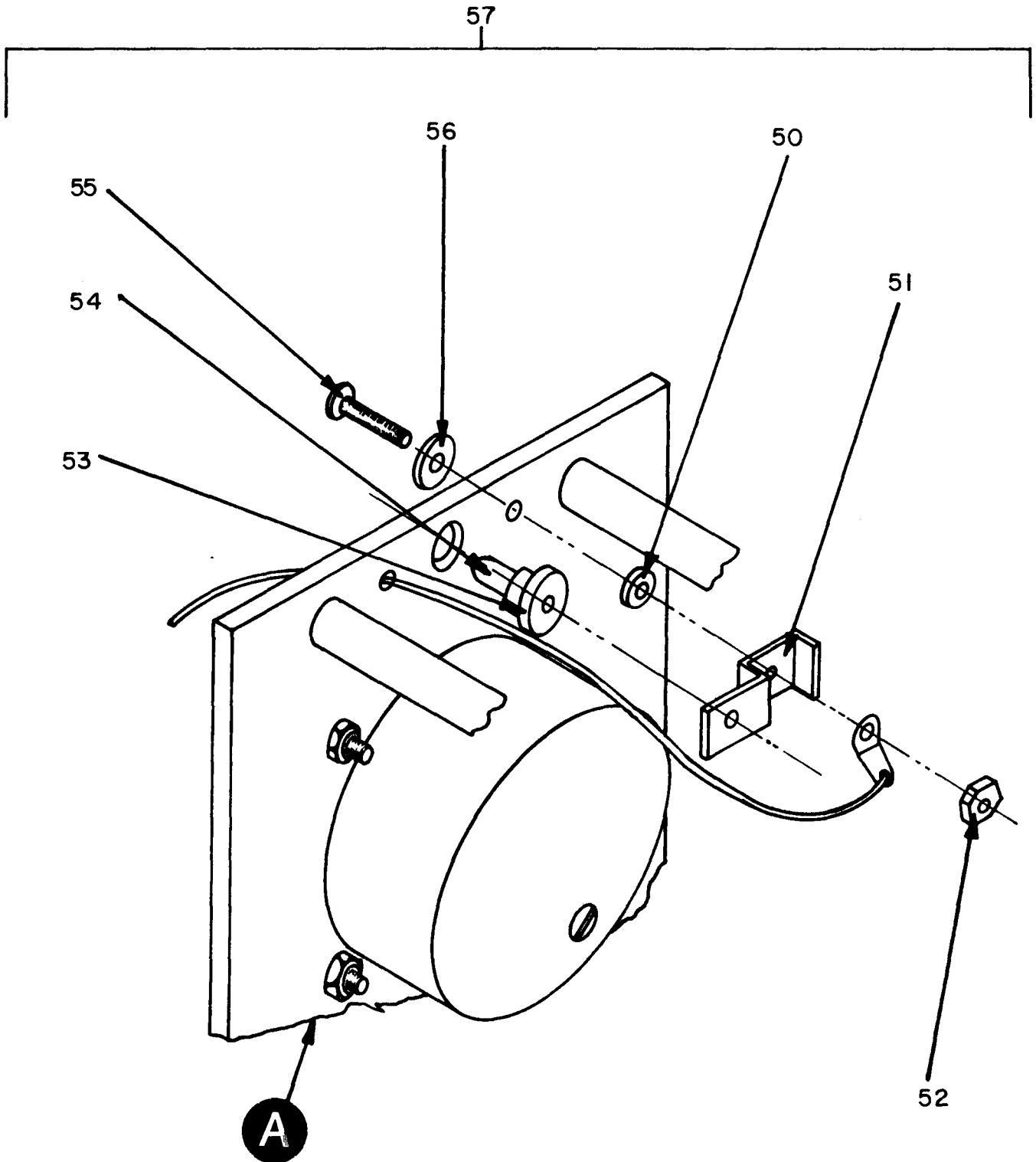
END OF FIGURE

**THIS PAGE INTENTIONALLY LEFT BLANK**



EL50L002

Figure 2. Radiometer (Sheet 1 of 2).



EL50L003

Figure 2. Radiometer (Sheet 2 of 2).

SECTION II (1) ITEM NO	(2) SMR CODE	(3) FSCM	TM11-6665-245-34P (4) PART NUMBER	(5) DESCRIPTION AND USABLE ON CODE (UOC)	(6) QTY
GROUP 01 RADIACMETER					
FIGURE 2					
1	PAOZZ	96906	MS51963-20	SETSCREW	1
2	PAOZZ	96906	MS51963-23	SETSCREW	1
3	PAHZZ	96696	B1079	PROBE HANDLE	1
4	XBHZZ	96696	C1025 REV G	PANEL HANDLE	1
5	XAOZZ	96696	B1088-2	SCREW, CAPTIVE	2
6	XAOZZ	83330	2670	INSULATOR, WASHER	2
7	PAOZZ	96696	B3361 REV C	COVER, BATTERY RETAI	1
8	PAHZZ	96696	A3401 REV A	SPRING, BATTERY	2
9	PAHZZ	81073	30YY-2034	SWITCH, ROTARY	2
10	PAOZZ	81349	M5423/10-01	BOOT, DUST AND MOIST	2
11	PAHZZ	95272	6227-5SRS147-60	PACKING, PREFORMED	2
12	PAHZZ	96906	MS35215-53	SCREW, MACHINE	2
13	PAHZZ	80063	SM-B-416109-1	WASHER, FLAT	3
14	PAOZZ	81349	M39012/25-0006	COVER, ELECTRICAL CO	1
15	PAHZZ	96906	MS35215-52	SCREW, MACHINE	1
16	PAHZZ	02260	UG625C/U	CONNECTOR COAXIAL	1
17	XBHZZ	96696	B1042 REV D	METER WINDOW	1
18	XBHZZ	73734	62048	SCREW, SEAL	3
19	PAHZZ	96906	MS35215-55	SCREW, MACHINE	4
20	PAHZZ	96696	C1103 REV A	METER, MULTIPLE SCAL	1
21	XBHZZ	96696	B3907 REV A	ROTARY SHAFT	1
22	PAHZZ	96696	A3369	SPACER, SLEEVE	4
23	XBHZZ	96696	B3858 REV B	METER MTG PLATE	1
24	PAHZZ	96906	MS35333-104	WASHER, LOCK	2
25	PAHZZ	96906	MS35215-55	SCREW, MACHINE	2
26	PAHZZ	83330	2663	INSULATOR, BUSHING	1
27	PAHZZ	96696	A3856 REV A	SPACER, SLEEVE	2
28	PAHZZ	11769	00-6007-012-450A	CONNECTOR	1
29	XBHZZ	11769	60-6007-48-28	POLORIZING KEY	1
30	PAHHH	96696	D4517 REV A	CIRCUIT CARD ASSEMB	1
31	PAHZZ	96906	MS35333-71	WASHER, LOCK	2
32	PAHZZ	96906	MS35215-53	SCREW, MACHINE	2
33	PAHZZ	96906	MS35649-264	NUT, PLAIN, HEXAGON	4
34	PAHZZ	96906	MS35333-71	WASHER, LOCK	4
35	XBHZZ	96696	A3911	STANDOFF	2
36	PAHZZ	96906	MS16633-9	RING, RETAINING	2
38	PAHZZ	96906	MS35206-217	SCREW, MACHINE	2
39	XBHZZ	96696	B1023 REV G	METER LINKAGE LEVER	2
40	PAHZZ	96696	B1018 REV C	CONNECTING LINK, RIG	1
41	XBHHH	96696	B3405 REV B	METER LINKAGE ASSY	1
42	PAHZZ	25184	164-7507	O, RING	1
43	XBHZZ	96696	D1019 REV Y	PANEL, ALUMINUM	1
44	PAHZZ	71468	MC14E10-6SN	CONNECTOR, RECEPTACL	1
46	PAHZZ	96696	B1088-1	SCREW, CAPTIVE	6
47	PAHZZ	96906	MS28775-111	PACKING, PREFORMED	1
48	PAHZZ	96696	B1081	SCREW, CAPTIVE	1
49	PAOZZ	96696	B1082 REV E	DIAL, CONTROL	1

SECTION II		TM11-6665-245-34P				
(1)	(2)	(3)	(4)	(5)	(6)	
ITEM NO	SMR CODE	FSCM	PART NUMBER	DESCRIPTION AND USABLE ON CODE (UOC)	QTY	
50	PAHZZ	96906	MS15795-803	WASHER, FLAT	1	
51	XBHZZ	96696	A3367 REV A	LIGHT CONTACT	1	
52	PAHZZ	96906	MS35649-242	NUT, PLAIN, HEXAGON	1	
53	XBHZZ	96696	A3366 REV A	METER LT HOLDER	1	
54	PAHZZ	96906	MS25237-338	LAMP, INCANDESCENT	1	
55	PAHZZ	96906	MS35206-214	SCREW, MACHINE	1	
56	PAHZZ	96906	MS51859-4	WASHER, FLAT	1	
57	XBHHH	96696	B3796 REV B	METER LIGHT ASSY	1	

END OF FIGURE

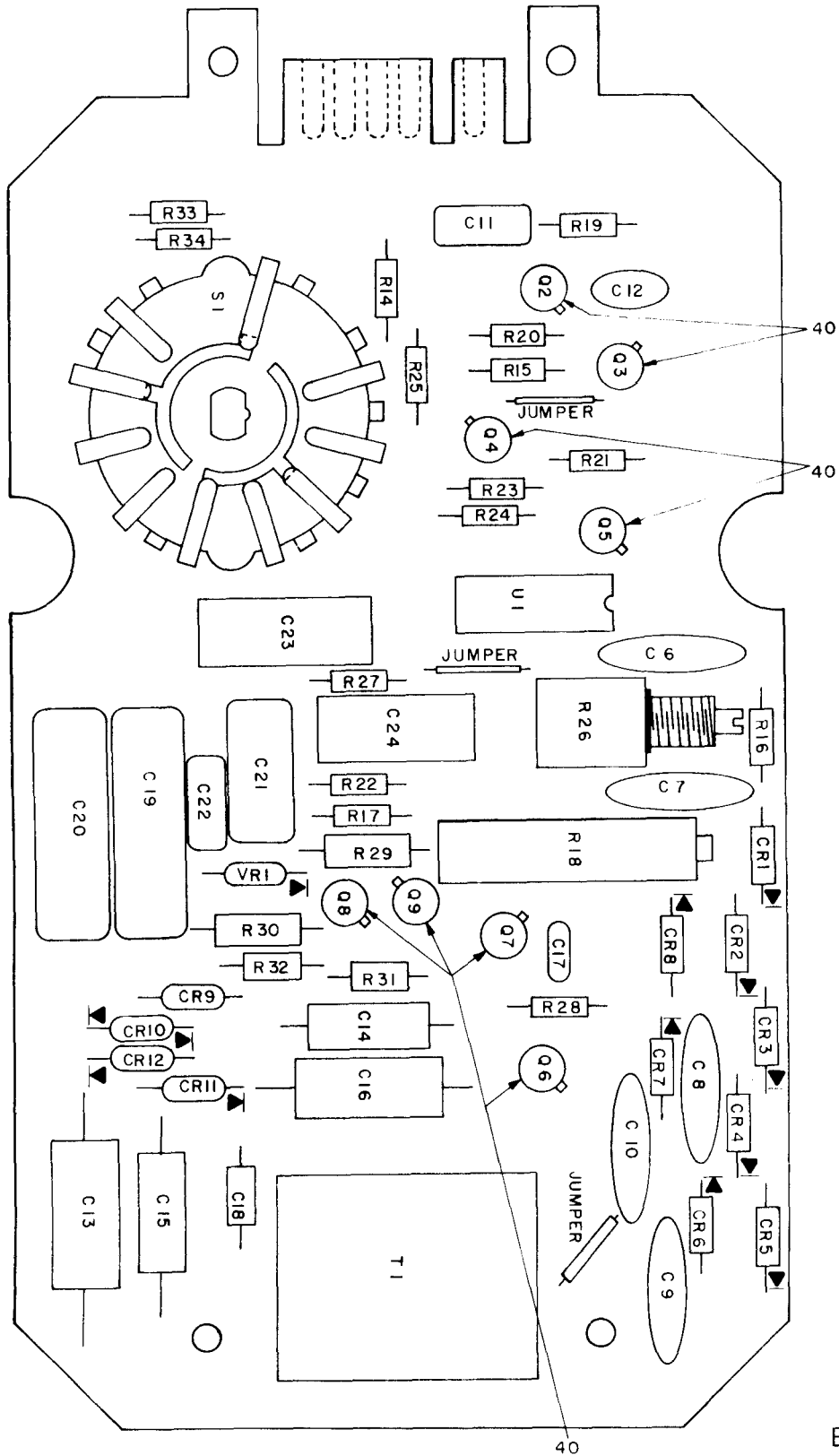


Figure 3. Printed Circuit Board Assembly (Sheet 1 of 2).

EL50L004



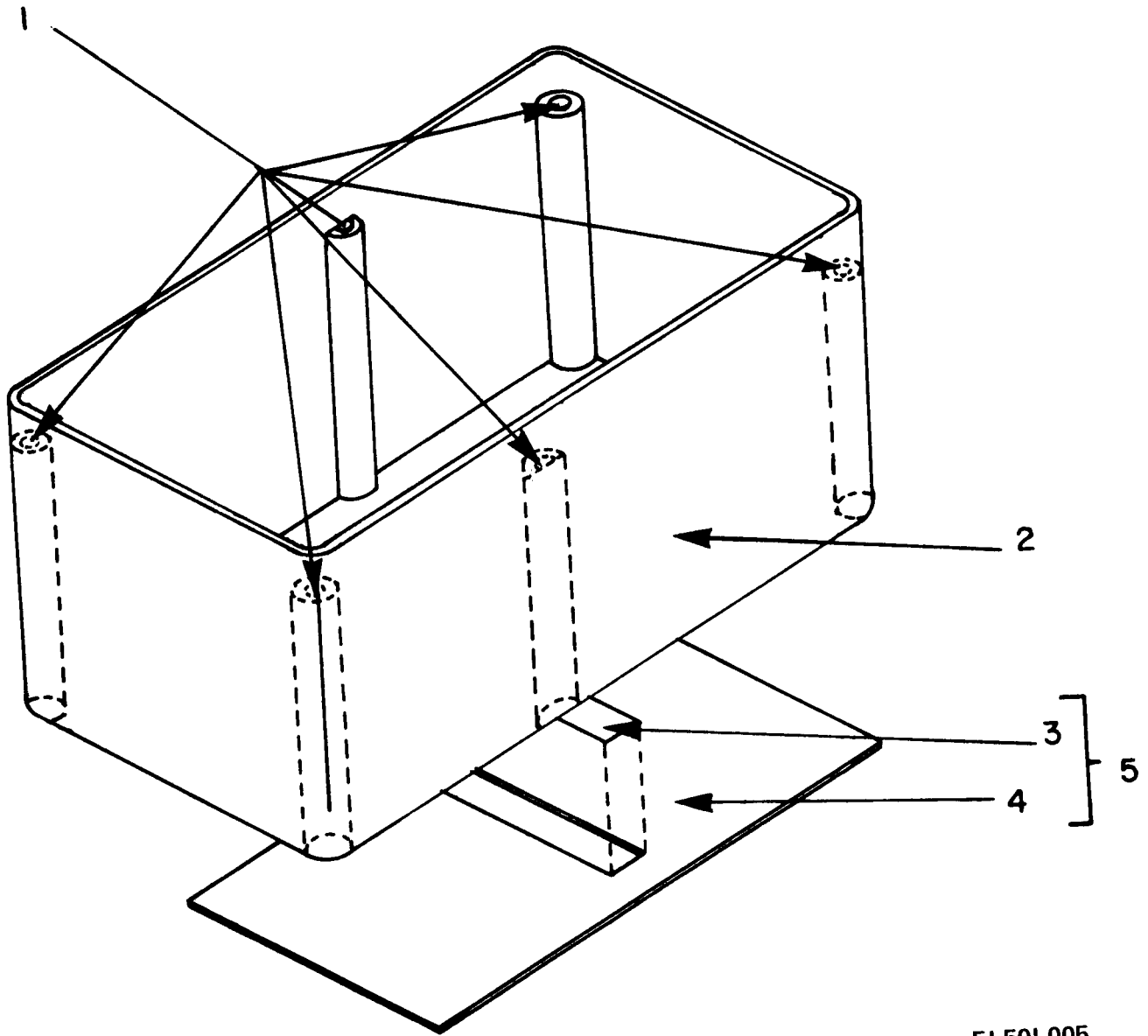
REF. DES.	ITEM NO.	REF. DES.	ITEM NO.
C-6	1	Q-3	17
C-7	1	Q-4	18
C-8	1	Q-5	17
C-9	1	Q-6	19
C-10	1	Q-7	17
C-11	2	Q-8	17
C-12	3	Q-9	17
C-13	4	R-14	20
C-14	5	R-15	21
C-15	6	R-16	22
C-16	7	R-17	21
C-17	8	R-18	23
C-18	9	R-19	24
C-19	10	R-20	25
C-20	11	R-21	21
C-21	12	R-22	26
C-22	13	R-23	26
C-23	14	R-24	27
C-24	14	R-25	24
CR-1	15	R-26	28
CR-2	15	R-27	29
CR-3	15	R-28	30
CR-4	15	R-29	31
CR-5	15	R-30	32
CR-6	15	R-31	33
CR-7	15	R-32	34
CR-8	15	R-33	35
CR-9	16	R-34	29
CR-10	16	S-1	36
CR-11	16	T-1	37
CR-12	16	U-1	38
Q-2	17	VR-1	39

EL50L009

Figure 3. Printed Circuit Board Assembly (Sheet 2 of 2).

SECTION II (1) ITEM NO	(2) SMR CODE	(3) FSCM	TM11-6665-245-34P (4) PART NUMBER	(5) DESCRIPTION AND USABLE ON CODE (UOC)	(6) QTY
GROUP 010103 P.C. BOARD ASSEMBLY					
FIGURE 3					
1	PAHZZ	04222	HVD-6-2KV10000 A PORM 10 PCT	CAPACITOR, FIXED, CER	5
2	PAHZZ	81349	CMR05F101GODR	CAPACITOR, FIXED, MIC	2
3	PAHZZ	81349	M39014/01-1575	CAPACITOR, FIXED, CER	1
4	PAHZZ	81349	M39003-01-2967	CAPACITOR, FIXED, ELE	1
5	PAHZZ	81349	M39003/01-2977	CAPACITOR, FIXED, ELE	1
6	PAHZZ	81349	M39003-01-2996	CAPACITOR, FIXED, ELE	1
7	PAHZZ	81349	M39003/01-2994	CAPACITOR, FIXED, ELE	1
8	PAHZZ	81349	M39014/02-1350	CAPACITOR, FIXED, CER	1
9	PAHZZ	81349	M39003-01-3097	CAPACITOR, FIXED, ELE	1
10	PAHZZ	81349	CQR29A1MA474G3P	CAPACITOR, FIXED, PLA	1
11	PAHZZ	81349	CQ09A1PA473F3	CAPACITOR, FIXED, PLA	1
12	PAHZZ	81349	CMR06F472GODR	CAPACITOR, FIXED, MIC	1
13	PAHZZ	81349	CMR06F471GODR	CAPACITOR, FIXED, MIC	1
14	PAHZZ	81349	M39003-01-2970	CAPACITOR, FIXED, ELE	2
15	PAHZZ	81349	JAN1N647	SEMICONDUCTOR DEVIC	8
16	PAHZZ	81349	JANTX1N483B	SEMICONDUCTOR DEVIC	4
17	PAHZZ	81349	JAN2N930	TRANSISTOR	6
18	PAHZZ	81349	JAN2N3251A	TRANSISTOR	1
19	PAHZZ	81349	JAN2N2945A	TRANSISTOR	1
20	PAHZZ	81349	RCR07G333JS	RESISTOR, FIXED, COMP	1
21	PAHZZ	81349	RCR07G223JS	RESISTOR, FIXED, COMP	3
22	PAHZZ	81349	RCR07G106JS	RESISTOR, FIXED, COMP	1
23	PAHZZ	81349	RJ12CY103	RESISTOR, VARIABLE, N	1
24	PAHZZ	16845	1000-483-23	RESISTOR, FIXED	2
25	PAHZZ	81349	RCR07G104JS	RESISTOR, FIXED, COMP	1
26	PAHZZ	81349	RCR07G473JS	RESISTOR, FIXED, COMP	2
27	PAHZZ	81349	RCR07G682JS	RESISTOR, FIXED, COMP	1
28	PAHZZ	81349	RV6LAYSA253A	RESISTOR, VARIABLE, N	1
29	PAHZZ	81349	RCR07G184JS	RESISTOR, FIXED, COMP	1
30	PAHZZ	81349	RCR07G391JS	RESISTOR, FIXED, COMP	1
31	PAHZZ	81349	RNC55K7151FS	RESISTOR, FIXED, FILM	1
32	PAHZZ	81349	RNC55K5622FS	RESISTOR, FIXED, FILM	1
33	PAHZZ	81349	RNC55K2552FS	RESISTOR, FIXED, FILM	1
34	PAHZZ	81349	RNC55K6492FS	RESISTOR, FIXED, FILM	1
35	PAHZZ	81349	RCR07G272JS	RESISTOR, FIXED, COMP	1
36	PAHZZ	96696	B3907	SWITCH, ROTARY	1
37	PAHZZ	96696	B5256 REV A	TRANSFORMER, PULSE	1
38	PAHZZ	81349	M38510/05202BCB	MICROCIRCUIT, DIGITA	1
39	PAHZZ	80131	1N4565A	SEMICONDUCTOR DEVIC	1
40	PAHZZ	07047	10166-N	MOUNTING PAD, ELECTR	9

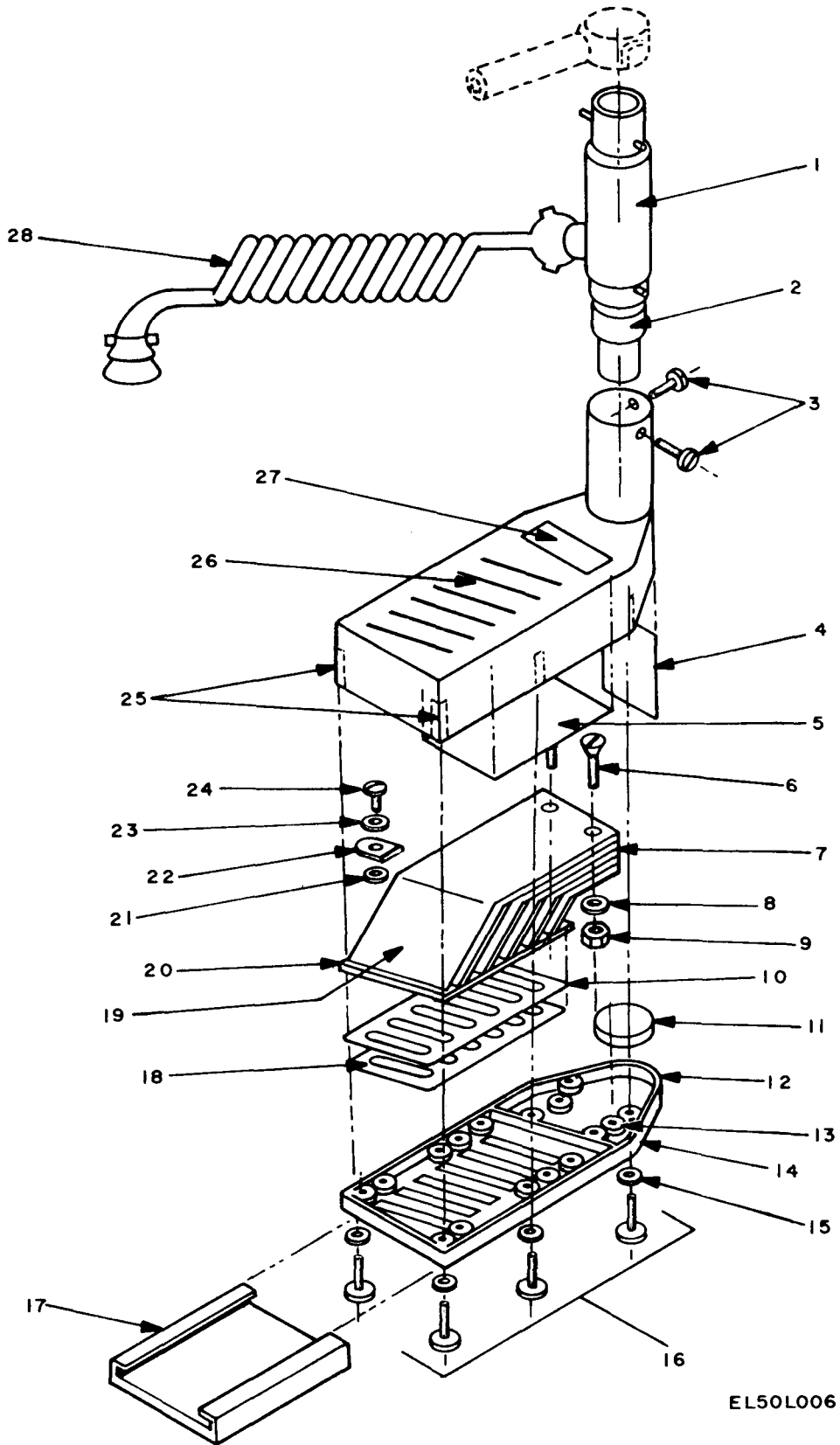
END OF FIGURE



EL50L005

Figure 4. Radiometer Case, Source.

SECTION II				TM11-6665-245-34P		
(1)	(2)	(3)	(4)	(5)	(6)	
ITEM	SMR		PART			
NO	CODE	FSCM	NUMBER	DESCRIPTION AND USABLE ON CODE (UOC)	QTY	
				GROUP 0102 RADIAC CASE,SOURCE		
				FIGURE 4		
1	XBHZZ	29372	SPA-0632-6	SPEEDSERT	6	
2	XBHZZ	96696	D1020	RADIACMETER CASE	1	
3	XBHZZ	96696	B1093	ALPHA SOURCE	1	
4	XBHZZ	96696	B1094	ALPHA SOURCE FRAME	1	
5	XBHHH	96696	B1115	CASE SOURCE ASSY	1	
				END OF FIGURE		

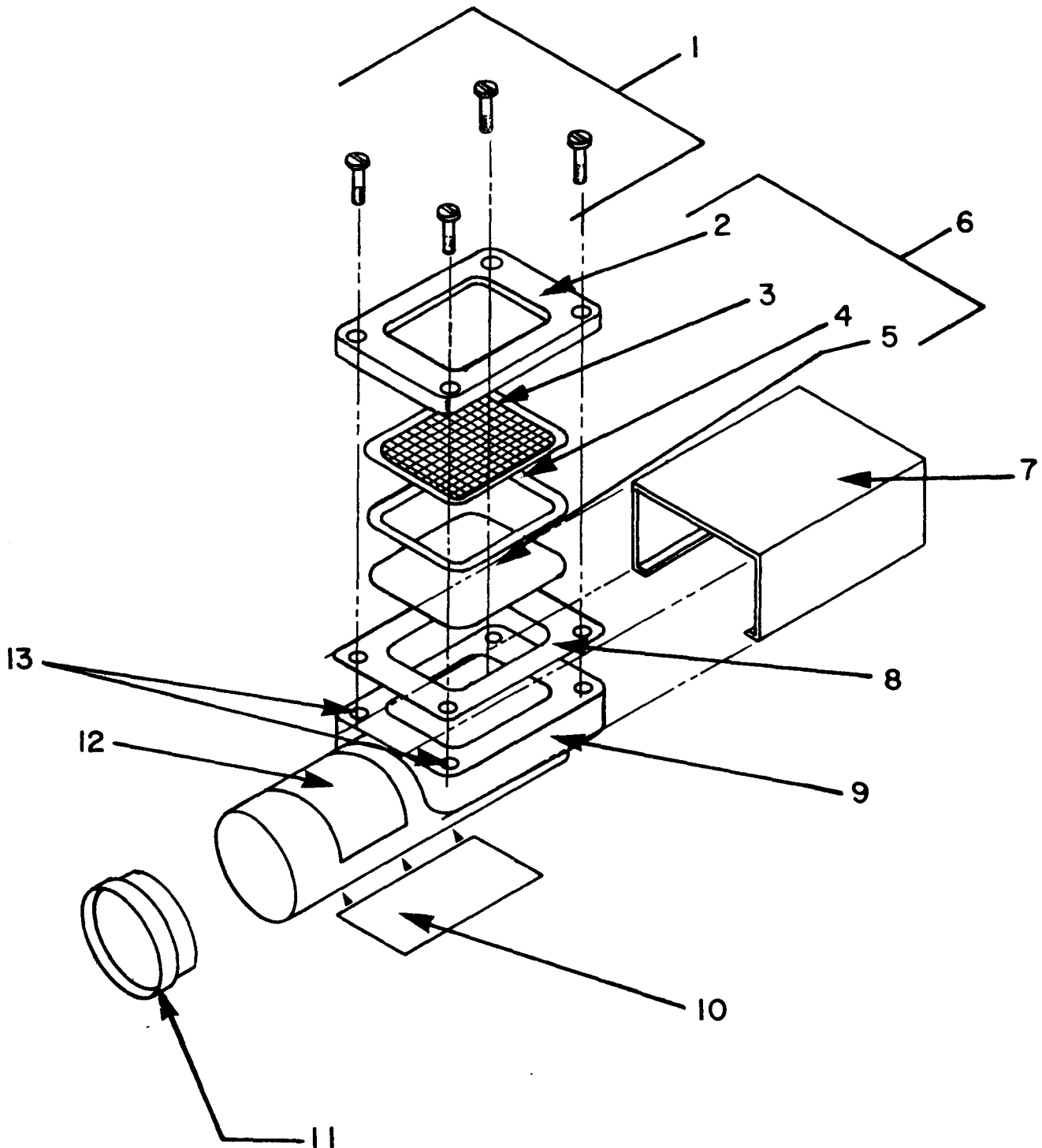


EL50L006

Figure 5. Main Probe Assembly.

SECTION II (1)	ITEM (2)	(3)	TM11-6665-245-34P (4)	(5)	(6)
NO	SMR CODE	FSCM	PART NUMBER	DESCRIPTION AND USABLE ON CODE (UOC)	QTY
GROUP 02 MAIN PROBE ASSEMBLY (INCLUDES EMITTER FOLLOWER)					
FIGURE 5					
1	PAHZZ	96696	C4622	EMITTER FOLLOWER	1
2	PAHZZ	49671	931B	ELECTRON TUBE	1
3	PAHZZ	96906	MS35223-13	SCREW,MACHINE	2
4	XBHZZ	96696	B1095	SHIELD,LEAD	1
5	XBHZZ	96696	B1055	LT PIPE CUSHION	1
6	PAHZZ	96906	MS35198-33	SCREW,MACHINE	2
7	XAHZZ	96696	B1041	LIGHT PIPE	1
8	PAHZZ	96696	B1051	SPACER,SLEEVE	2
9	XBHZZ	06540	9317-A140-1	SPACER	2
10	XBHZZ	96696	B1048	WINDOW,OBSERVATION	1
11	XBHZZ	96696	B1054	PM TUBE CUSHION	1
12	XBHZZ	25184	168-7507	O%RING	1
13	XBOZZ	29372	SPA-0440-S	INSERT,SCREW THREAD	2
14	XBOZZ	96696	D1024	PROBE BASE	1
15	PAHZZ	83330	2670	INSULATOR,WASHER	6
16	PAHZZ	96696	B1088-1	SCREW,CAPTIVE	6
17	PAOZZ	96696	B1050 REV C	WINDOW GUARD PLASTI	1
18	PAHZZ	96696	B1044	SEAL,RUBBER STRIP	1
19	PAHZZ	96696	B1049	TEST SET SUBASSEMBL	1
20	XBHZZ	96696	B1043	SCREEN,LIGHT PIPE,R	1
21	PAHZZ	83330	2161	WASHER,FLAT	5
22	PAHZZ	96696	B1080	ANCHOR STRAP	6
23	PAHZZ	96906	MS35338-97	WASHER,LOCK	6
24	PAHZZ	96906	MS35206-215	SCREW,MACHINE	6
25	PAHZZ	29372	SPA0632S	INSERT,SCREW THREAD	6
26	XBOZZ	96696	C4181	PROBE HOUSING	1
27	XBHZZ	96696	A3903	PLATE,IDENT	1
28	PAOZZ	96696	B4623	COIL CORD ASSEMBLY	1

END OF FIGURE



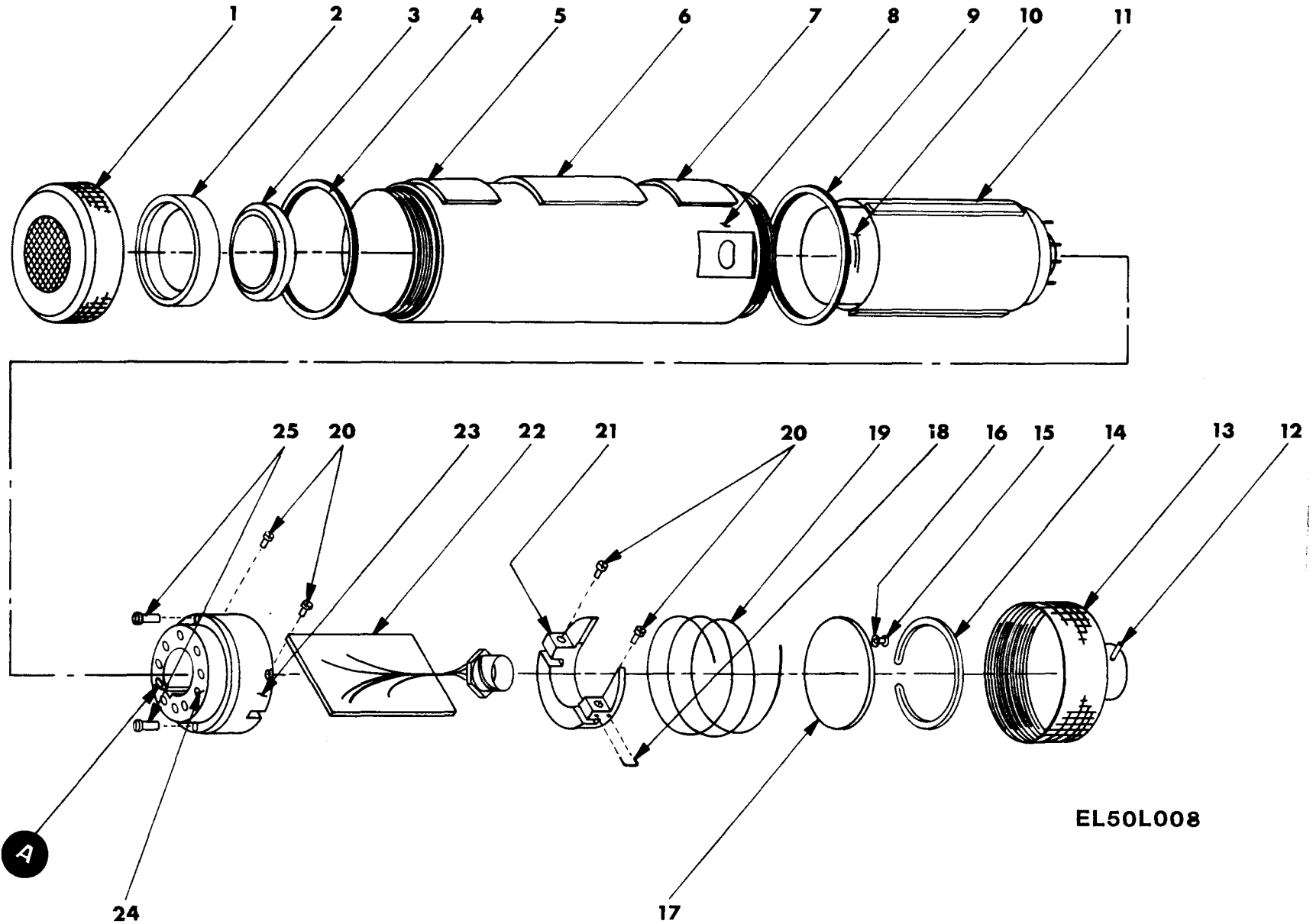
EL50L007

Figure 6. Auxiliary Probe Assembly.

SECTION II				TM11-6665-245-34P	
(1)	(2)	(3)	(4)	(5)	(6)
ITEM NO	SMR CODE	FSCM	PART NUMBER	DESCRIPTION AND USABLE ON CODE (UOC)	QTY
GROUP 03 AUXILIARY PROBE ASSEMBLY					
FIGURE 6					
1	PAHZZ	96906	MS35265-28	SCREW,MACHINE	4
2	XBHZZ	96696	B1065	COVER,SCREEN	1
3	XBHZZ	96696	B1097	PROTECT SCRN BE-CU	1
4	PAHZZ	96696	B1099	GASKET	1
5	XBHZZ	96696	B1116 REV B	SCIN SCREEN ASSY	1
6	XBHZZ	96696	B1146	SCINTILLATION SCREE	1
7	PAOZZ	96696	A3420 REV C	PROBE COVER	1
8	PAHZZ	96696	B1098 REV D	GASKET	1
9	XBHZZ	96696	C4178 REV H	PROBE CHAMBER	1
10	XBHZZ	96696	A3991 REV B	NAMEPLATE AUXPROBE	1
11	PAOZZ	99017	EC15	CAP-PLUG,PROTECTIVE	1
12	XBHZZ	96696	A3998 REV A	CAUTION LABEL	1
13	XBHZZ	29372	5PA-0632	SPEEDCERT	4

END OF FIGURE

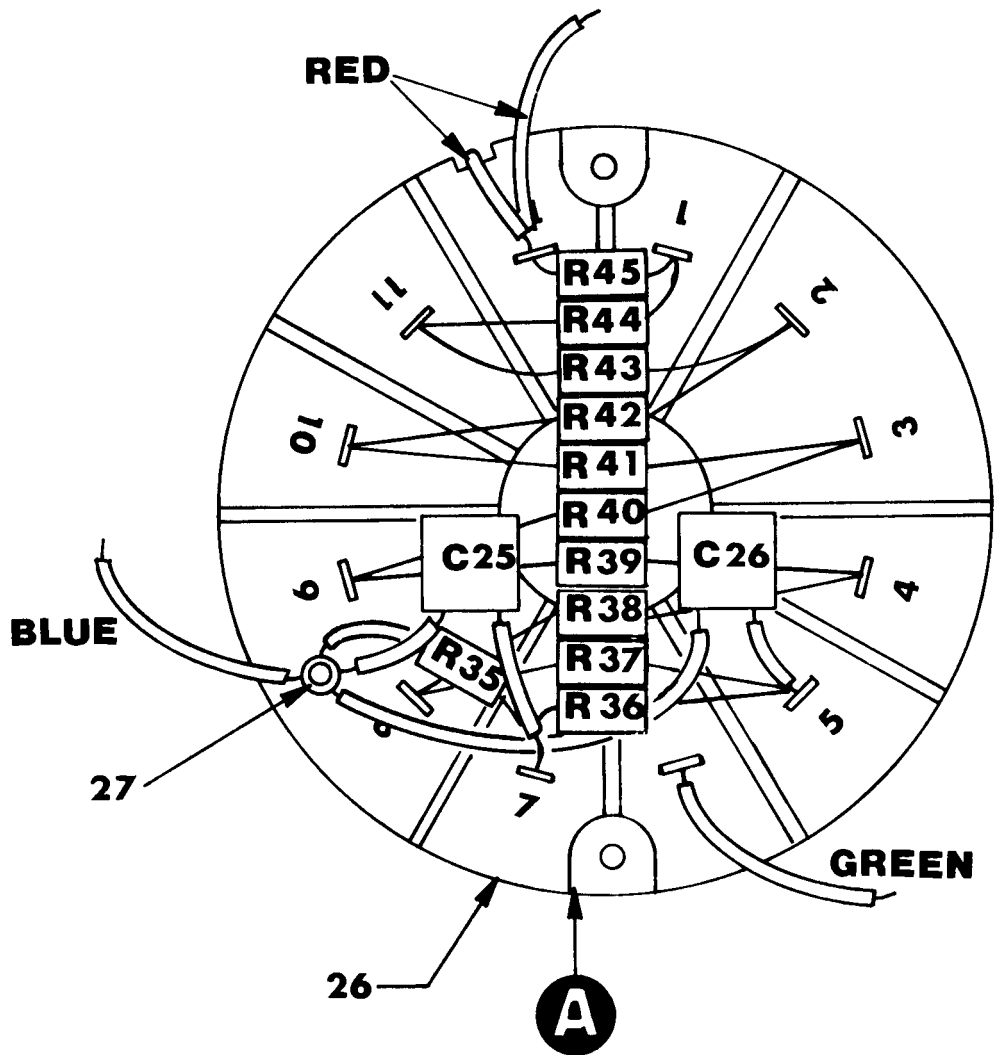




TM 11-6665-245-34P

Figure 7. X-Ray Probe, Exploded View (Sheet 1 of 2 Sheets)

REF. DESIG.	ITEM N°.
C25	28
C26	28
R35	29
R36	29
R37	29
R38	29
R39	29
R40	29
R41	29
R42	29
R43	29
R44	29
R45	30



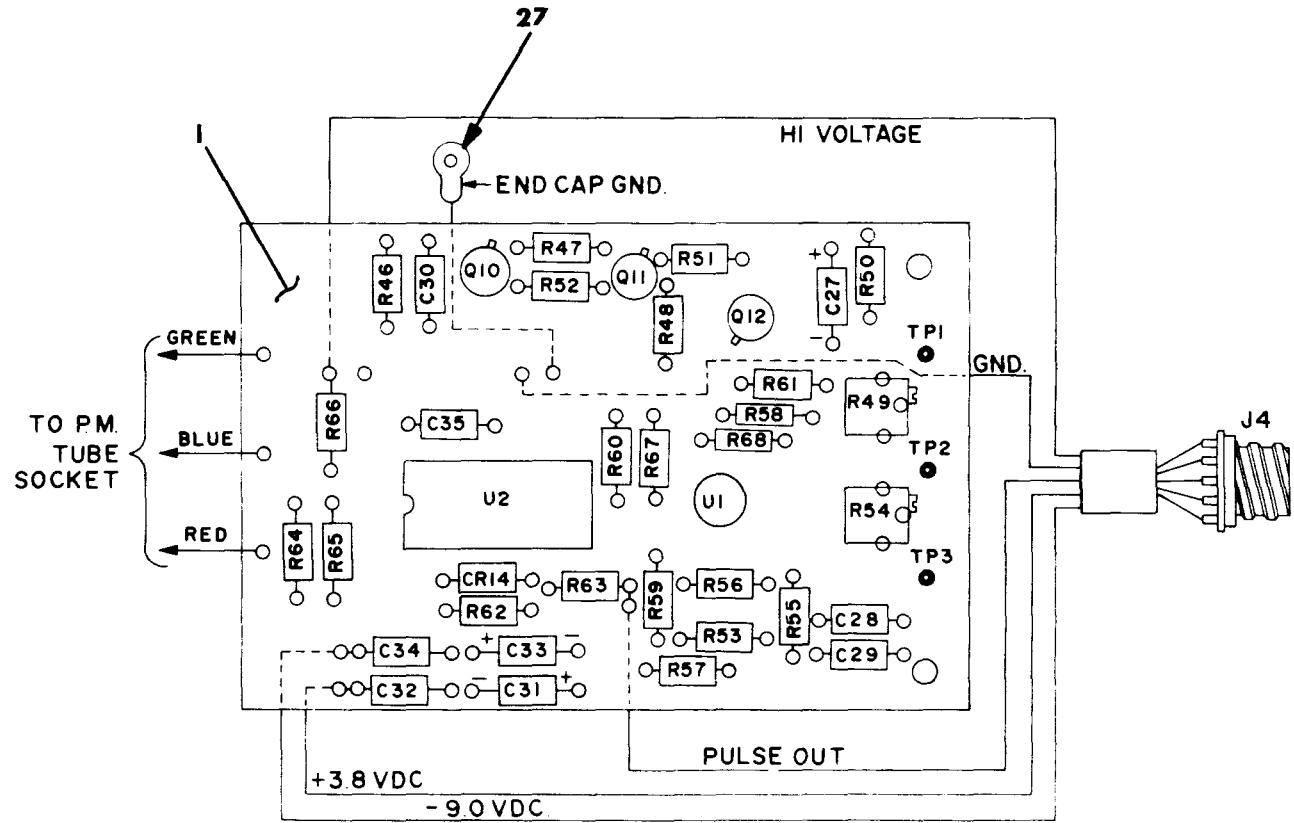
EL50L009

Figure 7. X-Ray Probe, Exploded View (Sheet 2 of 2 Sheets)

SECTION II		TM11-6665-245-34P			
(1)	(2)	(3)	(4)	(5)	(6)
ITEM NO	SMR CODE	FSCM	PART NUMBER	DESCRIPTION AND USABLE ON CODE (UOC)	QTY
GROUP 04 X-RAY PROBE ASSEMBLY					
FIGURE 7					
1	XBDZZ	96696	C-7357	CAP RING ASSY	1
2	XBDZZ	96696	A-4370	JAMB RING	1
3	XBDZZ	96696	A-5475	SCINT CRYSTAL HOLD ASSY	1
4	PADZZ	02697	2-33C557-7	PACKING, PREFORMED	1
5	XBDZZ	96696	B-7354	ID PLATE DT590A	1
6	XBDZZ	96696	B-7365	RELATION CHT-PLATE	1
7	XBDZZ	96696	B8658	CALIBRATION TAG	1
8	XBDZZ	96696	C-7206	PROBE HOUSING	1
9	PADZZ	45681	2-031-C557-70	PACKING, PREFORMED	1
10	PADZZ	54590	S83010E	PHOTOMULTIPLIER TUBE	1
11	XBDZZ	96696	B-4373	TUBE SUPPORT ASSY	1
12	XBDZZ	96696	B-1074	PIN	1
13	PADZZ	96696	B-7207	CAP, ELECTRICAL	1
14	PADZZ	79136	5008-187-H	RING, RETAINING	1
15	PADZZ	96906	MS51957-1	SCREW, MACHINE	1
16	PADZZ	96906	MS35333-69	WASHER, LOCK	1
17	XBDZZ	96696	A-7208	SPRING RETAINER	1
18	PADZZ	96696	A-7344	STAPLE GUIDE	1
19	XBDZZ	56988	S-3064	SPRING	1
20	PADZZ	96696	315159	SCREW CAP, SOCKET HE	4
21	XBDZZ	96696	B-7337	SUPPORT, PC BOARD	1
23	XBDZZ	96696	B-7342	TUBE SOCKET CLAMP	1
24	PADZZ	96696	C-7339	SOCKET ASSEMBLY	1
25	PADZZ	96696	311676	SCREW	2
26	XBDZZ	96696	600819	SOCKET, TUBE	1
27	PADZZ	6K774	5714153020519	STANDOFF PIN	1
28	PADZZ	81349	M39014-02-1338	CAPACITOR, FIXED, CER	2
29	PADZZ	81349	RCR07G755J	RESISTOR, COMP	10
30	PADZZ	81349	RCR07G106JS	RESISTOR, FIXED, COMP	1

END OF FIGURE

REF DESIG.	ITEM NO.	REF DESIG.	ITEM NO.
C-27	5	R-54	22
C-28	2	R-55	11
C-29	2	R-56	17
C-30	3	R-57	11
C-31	5	R-58	13
C-32	2	R-59	11
C-33	5	R-60	18
C-34	2	R-61	15
C-35	4	R-62	14
CR-14	6	R-63	10
Q-10	8	R-64	19
Q-11	8	R-65	20
Q-12	7	R-66	20
R-46	16	R-67	11
R-47	14	R-68	11
R-48	9	U-1	23
R-49	21	U-2	24
R-50	12	J-4	25
R-51	11	TP-1	26
R-52	11	TP-2	26
R-53	11	TP-3	26



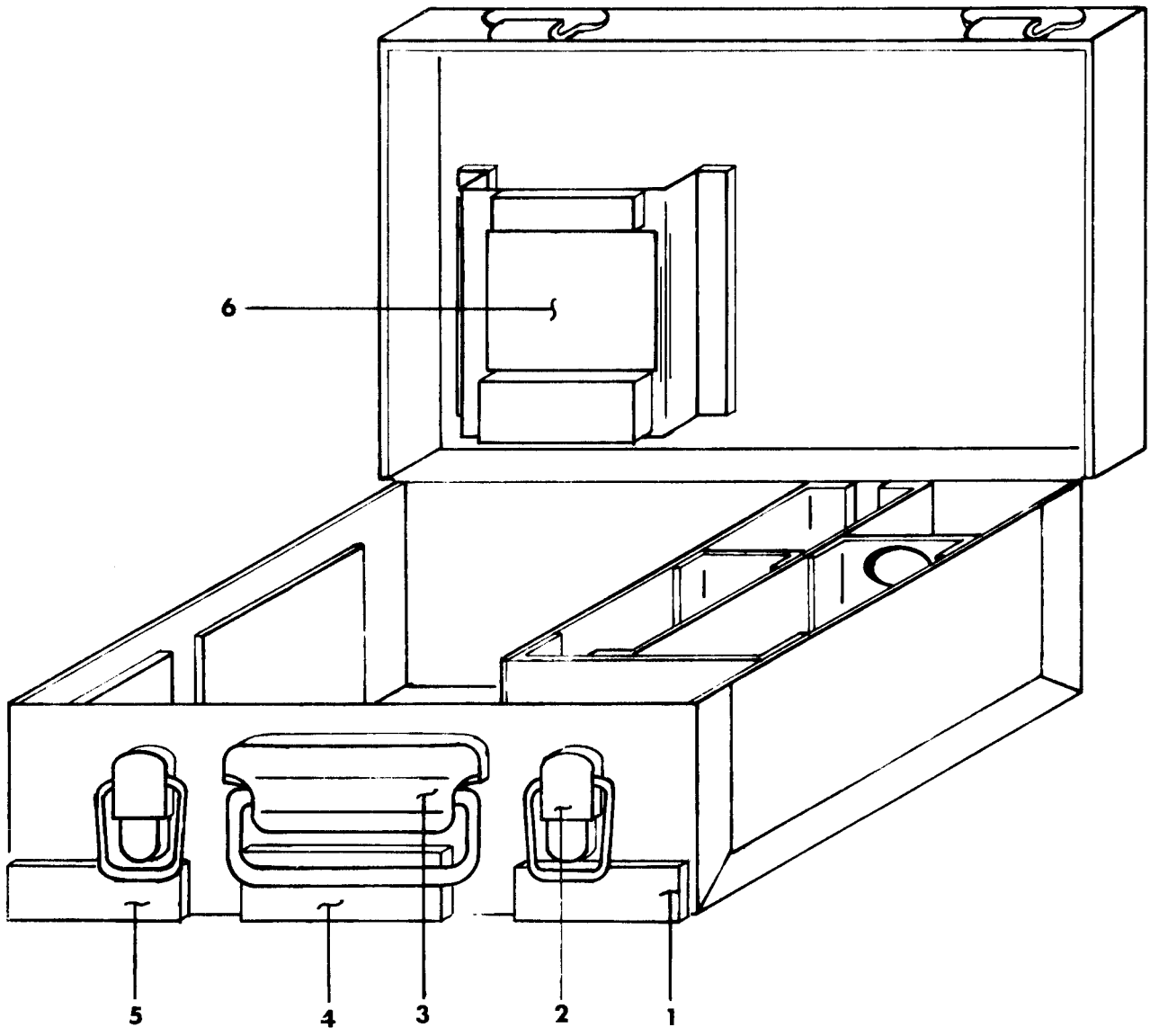
TM11-6665-245-34P

EL50L010

Figure 8. X-Ray Probe, DT-590A/PDR-56,PCB Parts Location

SECTION II (1)	ITEM (2)	(3)	TM11-6665-245-34P (4)	(5)	(6)
NO	SMR CODE	FSCM	PART NUMBER	DESCRIPTION AND USABLE ON CODE (UOC)	QTY
GROUP 0401 PCB ASSEMBLY					
FIGURE 8					
1	XBDZZ	96696	B-7341	PC BOARD	1
2	PADZZ	81349	M39014/01-1575	CAPACITOR, FIXED, CER	4
3	PADZZ	81349	M39014/01-1321	CAPACITOR, FIXED, CER	1
4	PADZZ	81349	CMR05F101GODR	CAPACITOR, FIXED, MIC	1
5	PADZZ	81349	M39003-01-3097	CAPACITOR, FIXED, ELE	3
6	PADZZ	81349	JAN1N914	SEMICONDUCTOR DEVIC	1
7	PADZZ	81349	JAN2N930	TRANSISTOR	1
8	PADZZ	81349	JAN2N3251A	TRANSISTOR	2
9	PADZZ	81349	RCR05G221JS	RESISTOR, FIXED, COMP	1
10	PADZZ	81349	RCR05G102JS	RESISTOR, FIXED, COMP	1
11	PADZZ	81349	RCR05G103JS	RESISTOR, FIXED, COMP	8
12	PADZZ	81349	RCR05G333JS	RESISTOR, FIXED, COMP	1
13	PADZZ	81349	RCR05G273JS	RESISTOR, FIXED, COMP	1
14	PADZZ	81349	RCR05G333JS	RESISTOR, FIXED, COMP	2
15	PADZZ	81349	RCR05G753JS	RESISTOR, FIXED, COMP	1
16	PADZZ	81349	RCR05G104JS	RESISTOR, FIXED, COMP	1
17	PADZZ	81349	RCR05G224JS	RESISTOR, FIXED, COMP	1
18	PADZZ	81349	RCR07G305JS	RESISTOR, FIXED, COMP	1
19	PADZZ	81349	RCR07G106JS	RESISTOR, FIXED, COMP	1
20	PADZZ	81349	RCR07G226JS	RESISTOR, FIXED, COMP	2
21	PADZZ	81349	RJR26FP103P	RESISTOR, VARIABLE, N	1
22	PADDD	96696	C-7340	CIRCUIT CARD ASSEMB	1
22	PADZZ	81349	RJR26FP104P	RESISTOR, VARIABLE, N	1
23	PADZZ	81349	M38510/11202BCB	MICROCIRCUIT, DIGITA	1
24	PADZZ	18324	C5474N/883	MICROCIRCUIT, DIGITA	1
25	PADZZ	71468	MC-14E-10-6PN	CONNECTOR, RECEPTA	1
26	XBDZZ	89110	85931-6	TEST POINT	3
27	PADZZ	96906	MS77068-1	TERMINAL, LUG	1

END OF FIGURE



EL50L011

Figure 9. Case Radiac Set

SECTION II				TM11-6665-245-34P	
(1)	(2)	(3)	(4)	(5)	(6)
ITEM NO	SMR CODE	FSCM	PART NUMBER	DESCRIPTION AND USABLE ON CODE (UOC)	QTY
				GROUP 05 CASE,RADIAC SET D4609	
				FIGURE 9	
1	XBHZZ	96696	B5308	PLATE,IDENT	1
2	XBHZZ	29943	C224-W/#200	DRAW PULL CATCH	1
3	XBHZZ	29943	985LS-2-RG	HANDLE	1
4	XBHZZ	96696	B1147	RADIATION LABEL	1
5	XBHZZ	96696	B4629	PLATE,IDENT	1
6	XBHZZ	96696	B4627	LISTING,CONTENTS	1
				END OF FIGURE	

## NATIONAL STOCK NUMBER AND PART NUMBER INDEX

STOCK NUMBER		NATIONAL STOCK NUMBER INDEX		STOCK NUMBER		FIG. ITEM	
		FIG.	ITEM			FIG.	ITEM
5905-00-004-6122	3	31	5905-00-432-6385	3	32		
5310-00-009-7662	5	21	5905-00-458-9346	8	16		
5910-00-010-8158	3	4	5905-00-458-9500	8	10		
5910-00-010-8192	3	9	5905-00-483-4284	3	23		
	8	5	5310-00-484-4439	2	26		
5910-00-010-8718	7	28	6240-00-542-6571	2	54		
5305-00-054-5635	7	15	5310-00-543-4652	7	16		
5305-00-059-8382	2	15	5905-00-549-8222	3	28		
5340-00-063-5446	6	11	5330-00-579-8108	2	47		
5905-00-110-0388	3	25	5305-00-582-5807	6	1		
5905-00-110-7622	3	27	5310-00-595-6211	2	50		
5905-00-111-4727	3	35	5310-00-616-3555	2	31		
5910-00-112-4337	8	3		2	34		
5910-00-113-5499	3	8	5935-00-617-2078	8	25		
5910-00-114-0787	3	6	5905-00-617-5090	8	12		
5905-00-114-5344	3	29		8	14		
5905-00-116-8556	3	21	5965-00-651-7372	1	4		
5905-00-118-4559	3	20	5935-00-681-5789	2	44		
5961-00-121-9865	3	19	5940-00-682-2477	8	27		
5905-00-121-9919	3	22	5305-00-719-5329	2	1		
	7	30	5305-00-719-5338	2	2		
	8	19	5330-00-727-9486	2	11		
5905-00-121-9921	8	18	5930-00-755-6806	2	9		
5905-00-121-9932	3	30	5961-00-842-9864	8	6		
5910-00-124-0659	3	3	5935-00-885-2264	2	14		
	8	2	5305-00-889-2997	5	24		
5905-00-126-6703	8	20	5305-00-889-2999	2	38		
5961-00-131-1316	3	39	5961-00-911-6015	3	18		
5905-00-137-7226	3	33		8	8		
5905-00-141-0717	3	26	5340-00-917-0928	5	25		
5905-00-147-7287	3	34	5310-00-934-9739	2	52		
5970-00-153-0155	5	15	5310-00-934-9761	2	33		
5910-00-156-7293	3	7	5310-00-939-1061	2	24		
5905-00-177-7486	8	9	5930-00-950-4541	2	10		
5310-00-184-8996	5	23	5305-00-954-5634	5	6		
5910-00-189-2818	3	14	5310-00-973-8660	2	13		
5910-00-189-4248	3	5	5961-00-985-4900	3	15		
5365-00-205-4208	2	36	5305-00-993-0190	2	55		
5305-00-206-2508	2	12	6625-01-010-0734	5	19		
	2	32	6665-01-013-2920	2	3		
5305-00-206-2510	2	19	5910-01-022-8983	3	11		
	2	25	5962-01-025-2594	3	38		
5310-00-213-4960	2	56	5910-01-029-8907	3	13		
5961-00-226-8579	3	17	5910-01-030-9211	3	12		
	8	7	5905-01-035-5065	8	11		
5961-00-235-8678	3	16	5930-01-037-5504	3	36		
5305-00-405-8960	5	3	5910-01-043-6892	3	2		
5905-00-407-0084	8	13		8	4		
5905-00-407-0089	8	15	5910-01-044-2688	3	10		
5905-00-412-4044	8	17	5905-01-066-3755	8	21		



## NATIONAL STOCK NUMBER AND PART NUMBER INDEX

STOCK NUMBER	NATIONAL STOCK NUMBER INDEX		FIG.	ITEM
	FIG.	ITEM		
5905-01-082-6824	8	22		
5960-01-085-3514	5	2		
5365-01-087-0833	3	40		
5360-01-101-6696	2	8		
5340-01-101-6697	5	22		
5330-01-101-6748	6	4		
5330-01-101-6749	6	8		
5365-01-101-6755	2	27		
5365-01-101-6756	5	8		
3040-01-101-6767	2	40		
5999-01-101-6805	2	30		
6625-01-101-6809	2	20		
6665-01-103-7684	1	7		
6665-01-103-7685	6	7		
6665-01-103-7686	5	28		
6665-01-103-7687	5	17		
6665-01-103-7688	5	1		
5950-01-103-7759	3	37		
6665-01-103-7761	1	3		
6135-01-104-7885	2	7		
6665-01-118-7352	1	1		
5365-01-121-5405	2	22		
5905-01-149-5107	3	24		
6665-01-151-4082	1	6		
6665-01-181-2478	7	22		
5999-01-204-0246	7	13		
5935-01-204-6024	7	24		

## NATIONAL STOCK NUMBER AND PART NUMBER INDEX

FSCM		PART NUMBER INDEX PART NUMBER	FIG.	ITEM
96696	A-4370		7	2
96696	A-5475		7	3
96696	A-7208		7	17
96696	A-7344		7	18
96696	A3366 REV A		2	53
96696	A3367 REV A		2	51
96696	A3369	5365-01-121-5405	2	22
96696	A3391 REV D		1	5
96696	A3401 REV A	5360-01-101-6696	2	8
96696	A3420 REV C	6665-01-103-7685	6	7
96696	A3856 REV A	5365-01-101-6755	2	27
96696	A3903		5	27
96696	A3911		2	35
96696	A3991 REV B		6	10
96696	A3998 REV A		6	12
96696	B-1074		7	12
96696	B-4373		7	11
96696	B-7207	5999-01-204-0246	7	13
96696	B-7337		7	21
96696	B-7341		8	1
96696	B-7342		7	23
96696	B-7354		7	5
96696	B-7365		7	6
96696	B1018 REV C	3040-01-101-6767	2	40
96696	B1023 REV G		2	39
96696	B1031 REV B	6665-01-103-7684	1	7
96696	B1041		5	7
96696	B1042 REV D		2	17
96696	B1043		5	20
96696	B1044		5	18
96696	B1048		5	10
96696	B1049	6625-01-010-0734	5	19
96696	B1050 REV C	6665-01-103-7687	5	17
96696	B1051	5365-01-101-6756	5	8
96696	B1054		5	11
96696	B1055		5	5
96696	B1065		6	2
96696	B1079	6665-01-013-2920	2	3
96696	B1080	5340-01-101-6697	5	22
96696	B1081		2	48
96696	B1082 REV E		2	49
96696	B1088-1		2	46
			5	16
96696	B1088-2		2	5
96696	B1093		4	3
96696	B1094		4	4
96696	B1095		5	4
96696	B1097		6	3
96696	B1098 REV D	5330-01-101-6749	6	8
96696	B1099	5330-01-101-6748	6	4
96696	B1112 REV D		1	5

## NATIONAL STOCK NUMBER AND PART NUMBER INDEX

FSCM		PART NUMBER INDEX		FIG.	ITEM
		PART NUMBER			
96696	B1115			4	5
96696	B1116 REV B			6	5
96696	B1146			6	6
96696	B1147			1	11
				9	4
96696	B3361 REV C	6135-01-104-7885		2	7
96696	B3405 REV B			2	41
96696	B3796 REV B			2	57
96696	B3858 REV B			2	23
96696	B3907	5930-01-037-5504		3	36
96696	B3907 REV A			2	21
96696	B4177 REV C	6665-01-103-7761		1	3
96696	B4623	6665-01-103-7686		5	28
96696	B4625			1	9
96696	B4627			9	6
96696	B4629			9	5
96696	B5256 REV A	5950-01-103-7759		3	37
96696	B5308			9	1
96696	B8658			7	7
96696	C-7206			7	8
96696	C-7339	5935-01-204-6024		7	24
96696	C-7340	6665-01-181-2478		7	22
96696	C-7357			7	1
81349	CMR05F101GODR	5910-01-043-6892		3	2
				8	4
81349	CMR06F471G0DR	5910-01-029-8907		3	13
81349	CMR06F472G0DR	5910-01-030-9211		3	12
81349	QQR29A1MA474G3P	5910-01-044-2688		3	10
81349	CQ09A1PA473F3	5910-01-022-8983		3	11
96696	C1025 REV G			2	4
96696	C1103 REV A	6625-01-101-6809		2	20
29943	C224-W/#200			9	2
96696	C4178 REV H			6	9
96696	C4181			5	26
96696	C4622	6665-01-103-7688		5	1
18324	C5474N/883			8	24
80058	DT590A/PDR-56F	6665-01-151-4082		1	6
96696	D1019 REV Y			2	43
96696	D1020			4	2
96696	D1024			5	14
96696	D3853 REV B	6665-01-118-7352		1	1
96696	D3854 REV B			1	10
96696	D4179			1	8
96696	D4517 REV A	5999-01-101-6805		2	30
96696	D4609 REV B			1	2
99017	EC15	5340-00-063-5446		6	11
80058	H-43B/U	5965-00-651-7372		1	4
04222	HVD-6-2KV10000 A			3	1
	PORM 10 PCT				
81349	JANTX1N483B	5961-00-235-8678		3	16
81349	JAN1N647	5961-00-985-4900		3	15

## NATIONAL STOCK NUMBER AND PART NUMBER INDEX

FSCM		PART NUMBER INDEX		FIG.	ITEM
		PART NUMBER			
81349	JAN1N914	5961-00-842-9864		8	6
81349	JAN2N2945A	5961-00-121-9865		3	19
81349	JAN2N3251A	5961-00-911-6015		3	18
				8	8
81349	JAN2N930	5961-00-226-8579		3	17
				8	7
71468	MC-14E-10-6PN	5935-00-617-2078		8	25
71468	MC14E10-6SN	5935-00-681-5789		2	44
96906	MS15795-803	5310-00-595-6211		2	50
96906	MS16633-9	5365-00-205-4208		2	36
96906	MS25237-338	6240-00-542-6571		2	54
96906	MS28775-111	5330-00-579-8108		2	47
96906	MS35198-33	5305-00-954-5634		5	6
96906	MS35206-214	5305-00-993-0190		2	55
96906	MS35206-215	5305-00-889-2997		5	24
96906	MS35206-217	5305-00-889-2999		2	38
96906	MS35215-52	5305-00-059-8382		2	15
96906	MS35215-53	5305-00-206-2508		2	12
				2	32
96906	MS35215-55	5305-00-206-2510		2	19
				2	25
96906	MS35223-13	5305-00-405-8960		5	3
96906	MS35265-28	5305-00-582-5807		6	1
96906	MS35333-104	5310-00-939-1061		2	24
96906	MS35333-69	5310-00-543-4652		7	16
96906	MS35333-71	5310-00-616-3555		2	31
				2	34
96906	MS35338-97	5310-00-184-8996		5	23
96906	MS35649-242	5310-00-934-9739		2	52
96906	MS35649-264	5310-00-934-9761		2	33
96906	MS51859-4	5310-00-213-4960		2	56
96906	MS51957-1	5305-00-054-5635		7	15
96906	MS51963-20	5305-00-719-5329		2	1
96906	MS51963-23	5305-00-719-5338		2	2
96906	MS77068-1	5940-00-682-2477		8	27
81349	M38510/05202BCB	5962-01-025-2594		3	38
81349	M38510/11202BCB			8	23
81349	M39003-01-2967	5910-00-010-8158		3	4
81349	M39003-01-2970	5910-00-189-2818		3	14
81349	M39003-01-2996	5910-00-114-0787		3	6
81349	M39003-01-3097	5910-00-010-8192		3	9
				8	5
81349	M39003/01-2977	5910-00-189-4248		3	5
81349	M39003/01-2994	5910-00-156-7293		3	7
81349	M39012/25-0006	5935-00-885-2264		2	14
81349	M39014-02-1338	5910-00-010-8718		7	28
81349	M39014/01-1321	5910-00-112-4337		8	3
81349	M39014/01-1575	5910-00-124-0659		3	3
				8	2
81349	M39014/02-1350	5910-00-113-5499		3	8
81349	M5423/10-01	5930-00-950-4541		2	10

## NATIONAL STOCK NUMBER AND PART NUMBER INDEX

FSCM	PART NUMBER INDEX		FIG.	ITEM
		PART NUMBER		
81349	RCR05G102JS	5905-00-458-9500	8	10
81349	RCR05G103JS	5905-01-035-5065	8	11
81349	RCR05G104JS	5905-00-458-9346	8	16
81349	RCR05G221JS	5905-00-177-7486	8	9
81349	RCR05G224JS	5905-00-412-4044	8	17
81349	RCR05G273JS	5905-00-407-0084	8	13
81349	RCR05G333JS	5905-00-617-5090	8	12
			8	14
81349	RCR05G753JS	5905-00-407-0089	8	15
81349	RCR07G104JS	5905-00-110-0388	3	25
81349	RCR07G106JS	5905-00-121-9919	3	22
			7	30
			8	19
81349	RCR07G184JS	5905-00-114-5344	3	29
81349	RCR07G223JS	5905-00-116-8556	3	21
81349	RCR07G226JS	5905-00-126-6703	8	20
81349	RCR07G272JS	5905-00-111-4727	3	35
81349	RCR07G305JS	5905-00-121-9921	8	18
81349	RCR07G333JS	5905-00-118-4559	3	20
81349	RCR07G391JS	5905-00-121-9932	3	30
81349	RCR07G473JS	5905-00-141-0717	3	26
81349	RCR07G682JS	5905-00-110-7622	3	27
81349	RCR07G755J		7	29
81349	RJR26FP103P	5905-01-066-3755	8	21
81349	RJR26FP104P	5905-01-082-6824	8	22
81349	RJ12CY103	5905-00-483-4284	3	23
81349	RNC55K2552FS	5905-00-137-7226	3	33
81349	RNC55K5622FS	5905-00-432-6385	3	32
81349	RNC55K6492FS	5905-00-147-7287	3	34
81349	RNC55K7151FS	5905-00-004-6122	3	31
81349	RV6LAYS253A	5905-00-549-8222	3	28
56988	S-3064		7	19
80063	SM-B-416109-1	5310-00-973-8660	2	13
29372	SPA-0440-S		5	13
29372	SPA-0632-6		4	1
29372	SPA0632S	5340-00-917-0928	5	25
54590	S83010E		7	10
02260	UG625C/U		2	16
11769	00-6007-012-450A		2	28
80131	1N4565A	5961-00-131-1316	3	39
16845	1000-483-23	5905-01-149-5107	3	24
07047	10166-N	5365-01-087-0833	3	40
25184	164-7507		2	42
25184	168-7507		5	12
45681	2-031-C557-70		7	9
02697	2-33C557-7		7	4
83330	2161	5310-00-009-7662	5	21
83330	2663	5310-00-484-4439	2	26
83330	2670		2	6
		5970-00-153-0155	5	15
81073	30YY-2034	5930-00-755-6806	2	9

## NATIONAL STOCK NUMBER AND PART NUMBER INDEX

FSCM	PART NUMBER INDEX		FIG.	ITEM
	PART NUMBER			
96696	311676		7	25
96696	315159		7	20
29372	5PA-0632		6	13
79136	5008-187-H		7	14
6K774	5714153020519		7	27
11769	60-6007-48-28		2	29
96696	600819		7	26
73734	62048		2	18
95272	6227-5SRS147-60	5330-00-727-9486	2	11
89110	85931-6		8	26
49671	931B	5960-01-085-3514	5	2
06540	9317-A140-1		5	9
29943	985LS-2-RG		9	3

By Order of the Secretary of the Army:

Official:

**JOHN A. WICKHAM, JR.**  
*General, United States Army*  
*Chief of Staff*

**R.L. DILWORTH**  
*Brigadier General, United States Army*  
*The Adjutant General*

DISTRIBUTION:

To be distributed in accordance with DA Form 12-36 literature requirements for AN/PDR-56F.

RECOMMENDED CHANGES TO EQUIPMENT TECHNICAL PUBLICATIONS



THEN... JOT DOWN THE DOPE ABOUT IT ON THIS FORM. CAREFULLY TEAR IT OUT. FOLD IT AND DROP IT IN THE MAIL!

SOMETHING WRONG WITH THIS PUBLICATION?

FROM: (PRINT YOUR UNIT'S COMPLETE ADDRESS)  
 Commander  
 Stateside Army Depot  
 ATTN: AMSTA-US  
 Stateside, N.J. 07703-5007

DATE SENT  
 10 July 1975

PUBLICATION NUMBER  
 TM 11-5840-340-20P

PUBLICATION DATE  
 23 Jan 78

PUBLICATION TITLE  
 Radar Set AN/PRC-76

BE EXACT PIN-POINT WHERE IT IS

PAGE NO	PARA-GRAPH	FIGURE NO	TABLE NO
33			
44		19	
45			

IN THIS SPACE TELL WHAT IS WRONG AND WHAT SHOULD BE DONE ABOUT IT:

For item 2, change the NSN to read: 5835-00-134-9186.  
 Reason: Accuracy.

Identify the cover on the junction box (item no. 5).  
 Reason: It is a separate item and is not called out on figure 19.

Add the cover of the junction box as an item in the listing for figure 19.  
 Reason: Same as above

SAMPLE

PRINTED NAME GRADE OR TITLE AND TELEPHONE NUMBER  
 SSG I. M. DeSpirit of 999-1776

SIGN HERE

TEAR ALONG PERFORATED LINE





FILL IN YOUR  
UNIT'S ADDRESS

FOLD BACK

DEPARTMENT OF THE ARMY

\_\_\_\_\_  
\_\_\_\_\_

OFFICIAL BUSINESS  
PENALTY FOR PRIVATE USE \$300

POSTAGE AND FEES PAID  
DEPARTMENT OF THE ARMY  
DOD 314



TEAR ALONG PERFORATED LINE

Commander  
US Army Communications-Electronics Command  
and Fort Monmouth  
ATTN: AMSEL-ME-MP  
Fort Monmouth, New Jersey 07703-5007

# THE METRIC SYSTEM AND EQUIVALENTS

## WEIGHT MEASURE

1 Centimeter = 10 Millimeters = 0.01 Meters = 0.3937 Inches  
 1 Meter = 100 Centimeters = 1000 Millimeters = 39.37 Inches  
 1 Kilometer = 1000 Meters = 0.621 Miles

## WEIGHTS

Gram = 0.001 Kilograms = 1000 Milligrams = 0.035 Ounces  
 1 Kilogram = 1000 Grams = 2.2 lb.  
 1 Metric Ton = 1000 Kilograms = 1 Megagram = 1.1 Short Tons

## LIQUID MEASURE

1 Milliliter = 0.001 Liters = 0.0338 Fluid Ounces  
 1 Liter = 1000 Milliliters = 33.82 Fluid Ounces

## SQUARE MEASURE

1 Sq. Centimeter = 100 Sq. Millimeters = 0.155 Sq. Inches  
 1 Sq. Meter = 10,000 Sq. Centimeters = 10.76 Sq. Feet  
 1 Sq. Kilometer = 1,000,000 Sq. Meters = 0.386 Sq. Miles

## CUBIC MEASURE

1 Cu. Centimeter = 1000 Cu. Millimeters = 0.06 Cu. Inches  
 1 Cu. Meter = 1,000,000 Cu. Centimeters = 35.31 Cu. Feet

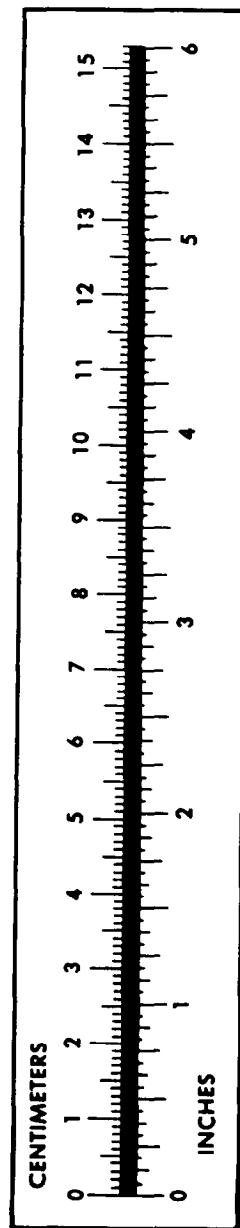
## TEMPERATURE

$5/9(^{\circ}\text{F} - 32) = ^{\circ}\text{C}$   
 212° Fahrenheit is equivalent to 100° Celsius  
 90° Fahrenheit is equivalent to 32.2° Celsius  
 32° Fahrenheit is equivalent to 0° Celsius  
 $9/5^{\circ}\text{C} + 32 = ^{\circ}\text{F}$

## APPROXIMATE CONVERSION FACTORS

TO CHANGE	TO	MULTIPLY BY
Inches	Centimeters	2.540
Feet	Meters	0.305
Yards	Meters	0.914
Miles	Kilometers	1.609
Square Inches	Square Centimeters	6.451
Square Feet	Square Meters	0.093
Square Yards	Square Meters	0.836
Square Miles	Square Kilometers	2.590
Acres	Square Hectometers	0.405
Cubic Feet	Cubic Meters	0.028
Cubic Yards	Cubic Meters	0.765
Fluid Ounces	Milliliters	29.573
its	Liters	0.473
arts	Liters	0.946
allons	Liters	3.785
Ounces	Grams	28.349
Pounds	Kilograms	0.454
Short Tons	Metric Tons	0.907
Pound-Feet	Newton-Meters	1.356
Pounds per Square Inch	Kilopascals	6.895
Miles per Gallon	Kilometers per Liter	0.425
Miles per Hour	Kilometers per Hour	1.609

TO CHANGE	TO	MULTIPLY BY
Centimeters	Inches	0.394
Meters	Feet	3.280
Meters	Yards	1.094
Kilometers	Miles	0.621
Square Centimeters	Square Inches	0.155
Square Meters	Square Feet	10.764
Square Meters	Square Yards	1.196
Square Kilometers	Square Miles	0.386
Square Hectometers	Acres	2.471
Cubic Meters	Cubic Feet	35.315
Cubic Meters	Cubic Yards	1.308
Milliliters	Fluid Ounces	0.034
Liters	Pints	2.113
Liters	Quarts	1.057
ers	Gallons	0.264
ms	Ounces	0.035
ograms	Pounds	2.205
Metric Tons	Short Tons	1.102
Newton-Meters	Pounds-Feet	0.738
Kilopascals	Pounds per Square Inch	0.145
ometers per Liter	Miles per Gallon	2.354
ometers per Hour	Miles per Hour	0.621



**PIN: 052283-000**

This fine document...

Was brought to you by me:



## [Liberated Manuals -- free army and government manuals](#)

Why do I do it? I am tired of sleazy CD-ROM sellers, who take publicly available information, slap “watermarks” and other junk on it, and sell it. Those masters of search engine manipulation make sure that their sites that sell free information, come up first in search engines. They did not create it... They did not even scan it... Why should they get your money? Why are not letting you give those free manuals to your friends?

I am setting this document FREE. This document was made by the US Government and is NOT protected by Copyright. Feel free to share, republish, sell and so on.

I am not asking you for donations, fees or handouts. If you can, please provide a link to [liberatedmanuals.com](http://liberatedmanuals.com), so that free manuals come up first in search engines:

<A HREF=<http://www.liberatedmanuals.com/>>Free Military and Government Manuals</A>

– Sincerely  
Igor Chudov  
<http://igor.chudov.com/>