

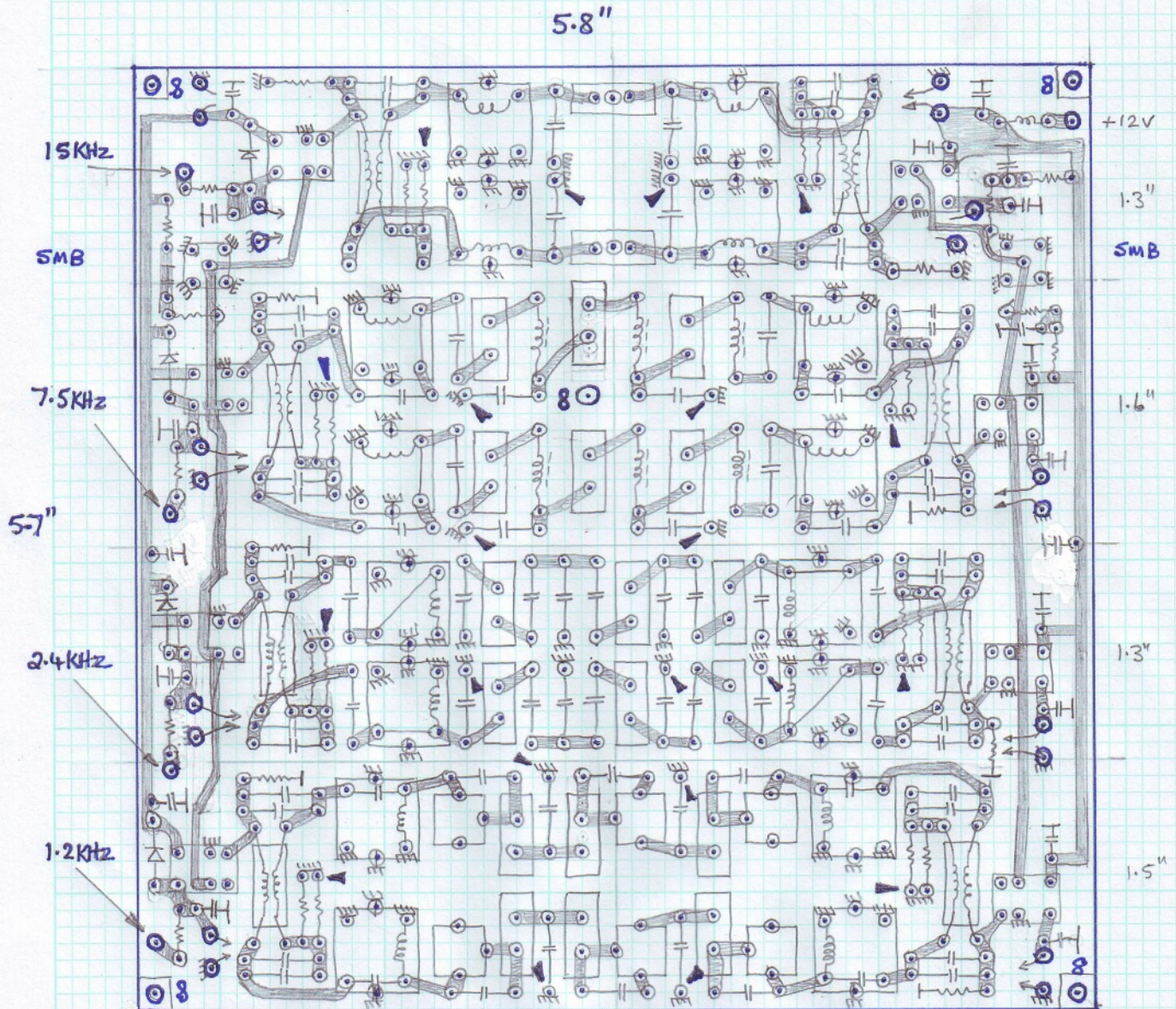
Quadrature Hybrid Roofing Filters v1.1

21/5/13

Input and output connectors are PCB mounted SMB types.

Each filter is selected by pulling down the appropriate control line shown on the left below.

The pairs of arrowed lines show screened links joining each pair of relays.



Notes:

See the PCB symbol document for an explanation of all symbols on this diagram.

Board material is 1/16 inch thick double sided copper clad fibreglass.

Board dimensions are 5.7" (145mm) by 5.8 inches (148mm). Check the dimensions of the printed image and change the printing scale if required.

The above view is from the solder side and all areas containing points marked as ground connections should be infilled with ground copper and connected through to the top copper groundplane.

All of the top copper is a continuous ground plane with small gaps around non-ground component leads.

Through links are marked with arrow heads to join top and bottom copper together.

The reed relays are connected so that they are de-energised in the receive condition and energised on transmit.