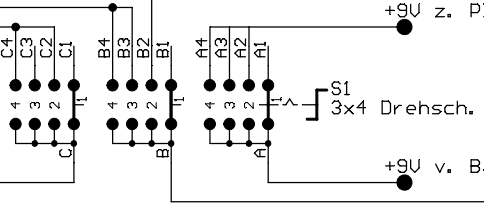


Schalterstellung:

- 1: Aus
- 2: 80m (3,5 - 3,8 MHz)
- 3: 40m (7 - 7,1 MHz)
- 4: 40 - 49m (6,8 - 7,6 MHz)



<h1>Audion für 40 / 80m</h1>	
TITLE: 80-40m-rx	
Document Number:	REV:
Date: 23.11.2002 20:43:54	Sheet: 1/1